

DAILY DIRECT HOGS PLANT DELIVERED as of 1:30 PM

Negotiated Barrow and Gilts:	Carcass Base Price		Live Price	
<a href="#">NATIONAL - AMS 2675/LM HG203:</a>				
Range:	\$97.00	\$114.50	\$73.00	\$83.10
Weighted Average:	\$110.47		\$80.36	
Change from Prior Day:	\$4.92		(\$-2.30)	
Head Count	2,464		898	
<a href="#">IOWA/MINNESOTA - AMS 2675/LM HG206:</a>				
Weighted Average:	\$110.44		*	
Change from Prior Day:	*		*	

[WESTERN CORNBELT - AMS 2675/LM HG212:](#)

Weighted Average:	\$110.30	*
Change from Prior Day:	\$4.16	*

[EASTERN CORNBELT - AMS 2675/LM HG210:](#)

Weighted Average:	\$111.43	\$80.77
Change from Prior Day:	*	-\$3.31

\*Price not reported due to confidentiality.

[NATIONAL DAILY PORK REPORT FOB PLANT- AMS 2498/LM PK602:](#)

Carcass Cutout Values	119.52	Chg:	1.73
Primal Loin	100.58		(-0.95)
Primal Butt	124.24		(-0.22)
Primal Picnic	95.77		(-0.88)
Primal Rib	153.73		1.67
Primal Ham	115.00		4.31
Primal Belly	194.77		5.23
Total Loads	252.48		
Pork Cuts	230.63	Lds	
Trim/Process Pork	21.85	Lds	

[DAILY HOG SLAUGHTER UNDER FIS - AMS 3208/SJ LS710](#)

Today (est)	458,000
Week Ago (est)	467,000
Year Ago (act)	454,857

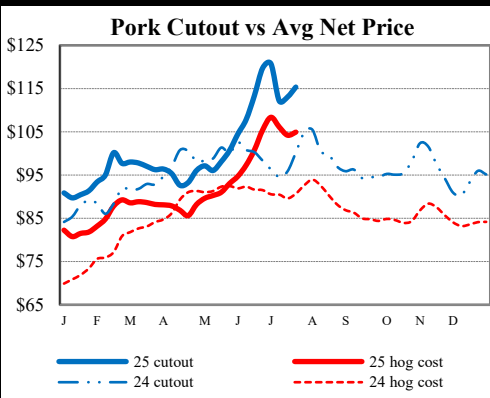
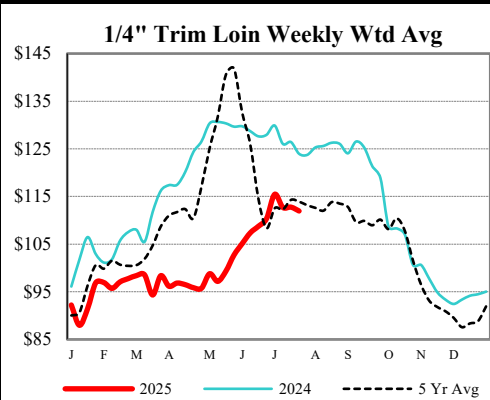
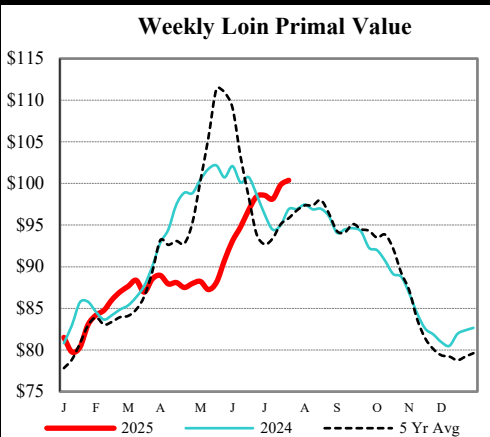
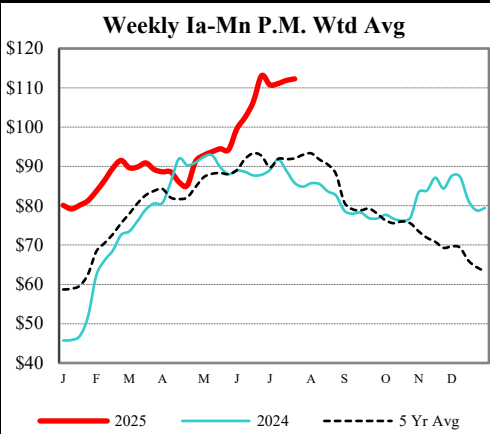
[National Daily Direct Hog Prior Day Report - Slaughtered Swine - AMS 2511/LM HG201](#)

Producer Sold:	NEG	OMF	SPMF	OPA	Total
Head Count	5,176	24,957	117,757	69,790	217,850
Carcass Base Price	111.58	100.09	106.43	99.18	103.48
Average Net Price	111.09	103.82	108.29	101.16	105.51

\*\*\*Negotiated Formula included in total\*\*\* \*Price not reported due to confidentiality.

[ESTIMATED WEEKLY PORK PRODUCTION UNDER FIS - AMS 3209/SJ LS712](#)

Week Ending	Hog Slaughter	Million Pounds	Live Weight	Dressed Weight
07/19/25	2,342,000	495.3	284	211
07/12/25	2,353,000	500.9	286	213
2025 YTD	69,006,000	14892.8		
2024 YTD	70,527,000	15181.3		



USDA Livestock, Poultry & Grain Market News  
Des Moines, Iowa | PH 515-284-4460  
Email: [Desm.LPGMN@usda.gov](mailto:Desm.LPGMN@usda.gov)

<https://mymarketnews.ams.usda.gov/viewReport/2872>

USDA AMS Livestock, Poultry & Grain Market News