



ISSN: 1949-1964

Released July 14, 2021, by the National Agricultural Statistics Service (NASS), Agricultural Statistics Board, United States Department of Agriculture (USDA).

Eggs in Incubators on July 1 Down 6 Percent from Last Year

Turkey eggs in incubators on July 1, 2021 in the United States totaled 26.0 million, down 6 percent from July 1, 2020. Eggs in incubators were up slightly from the June 1, 2021 total of 26.0 million eggs.

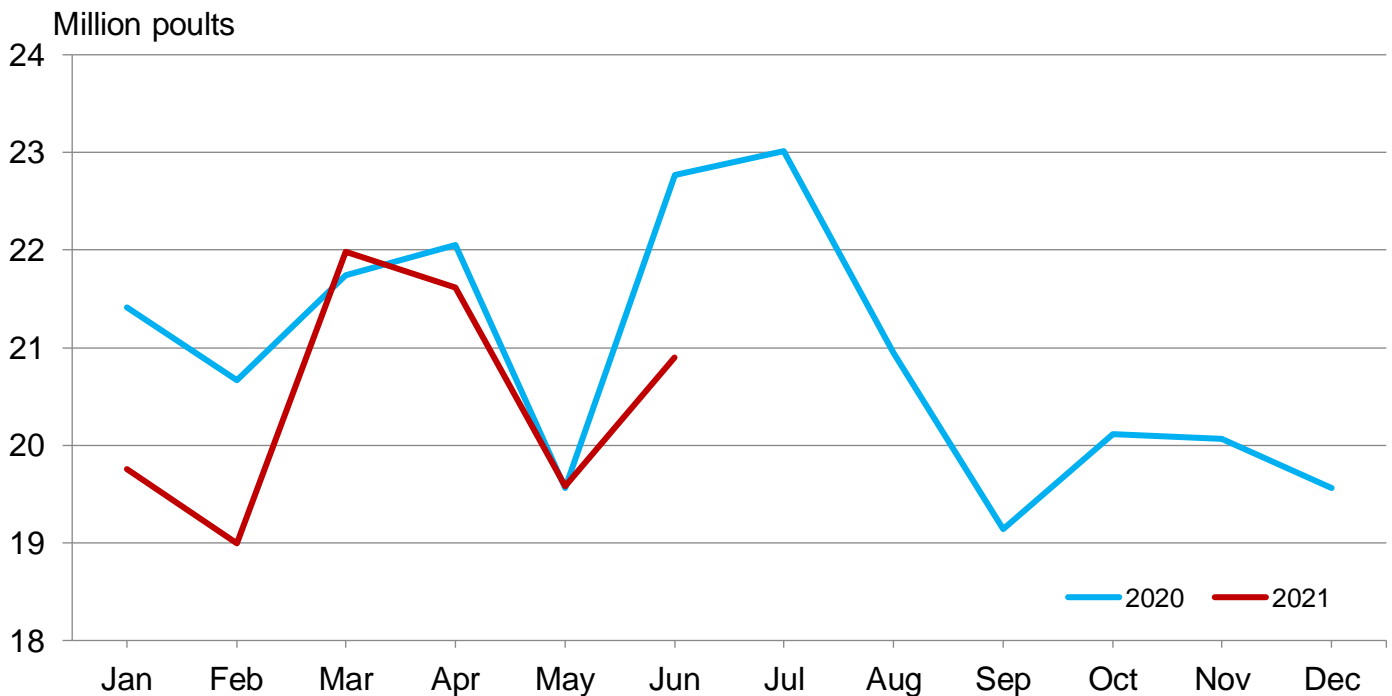
Poults Hatched During June Down 9 Percent from Last Year

Turkey poults hatched during June 2021 in the United States totaled 21.8 million, down 9 percent from June 2020. Poults hatched were up 4 percent from the May 2021 total of 20.9 million poults.

Net Poults Placed During June Down 8 Percent from Last Year

The 20.9 million net poults placed during June 2021 in the United States were down 8 percent from the number placed during the same month a year earlier. Net poult placements were up 7 percent from the May 2021 total of 19.6 million.

Net Poult Placements – United States



Eggs in Incubators and Poults Hatched by Month – United States: 2019-2021

[Blank data cells indicate estimation period has not yet begun]

Month	Eggs in incubators first of month		Percent of previous year	Poults hatched entire month		Percent of previous year
	2019-2020	2020-2021		2019-2020	2020-2021	
	(1,000 eggs)	(1,000 eggs)	(percent)	(1,000 poults)	(1,000 poults)	(percent)
September	26,666	25,989	97	22,464	21,840	97
October	29,327	27,293	93	24,905	23,290	94
November	26,958	26,764	99	22,325	22,230	100
December	26,464	26,982	102	22,655	23,090	102
January	28,820	24,635	85	23,879	21,502	90
February	28,209	26,153	93	22,566	20,705	92
March	27,980	26,150	93	23,729	23,269	98
April	27,922	27,547	99	23,461	22,599	96
May	27,274	25,403	93	21,562	20,903	97
June	28,540	25,958	91	23,940	21,763	91
July	27,718	26,011	94	23,759		
August	27,158			22,509		

Net Poulst Placements by Month – United States: 2019-2021

[Includes imports and excludes exports. Blank data cells indicate estimation period has not yet begun]

Month	Total all breeds		Percent of previous year	Cumulative total		Percent of previous year
	2019-2020	2020-2021		2019-2020	2020-2021	
	(1,000 poults)	(1,000 poults)	(percent)	(1,000 poults)	(1,000 poults)	(percent)
September	20,125	19,141	95	20,125	19,141	95
October	21,857	20,114	92	41,982	39,255	94
November	20,199	20,070	99	62,181	59,325	95
December	20,216	20,569	102	82,397	79,894	97
January	21,414	19,751	92	103,811	99,645	96
February	20,663	18,995	92	124,474	118,640	95
March	21,741	21,982	101	146,215	140,622	96
April	22,053	21,620	98	168,268	162,242	96
May	19,559	19,584	100	187,827	181,826	97
June	22,764	20,903	92	210,591	202,729	96
July	23,013			233,604		
August	20,945			254,549		

Statistical Methodology

Survey Procedures: Data for turkey hatchery estimates are collected from all known turkey hatcheries. Individual NASS regional field offices maintain a list of all known turkey hatcheries and use known sources of hatcheries to update their lists. Approximately 45 hatcheries in 20 states are contacted each month. All known turkey hatcheries hatching 15,000 or more poult annually are mailed a questionnaire as close to the first of the month as possible. Adequate time is given to respond via mail, fax, or electronic data reporting. Those that do not respond are contacted by phone. Care is exercised to ensure that all hatcheries are accounted for in the estimate.

Estimating Procedures: Sound statistical methodology is employed to derive the estimates from reported data. All data are analyzed for unusual values. Data from each operation are compared to their own past operating profile and to trends from similar operations. Data for missing operations were estimated based on similar operations or historical data. NASS regional field offices prepare these estimates by using a combination of survey indications and historic trends. Individual State estimates are reviewed by the Agricultural Statistics Board for reasonableness. Individual hatchery data are summed to State, regional, and United States totals. Only United States level estimates are published due to the limited number of hatcheries involved. The Net Poult Placement data include imported poult and exclude exported poult.

Cumulative net poult placements beginning on September 1 and ending on August 31 are shown in the monthly *Turkey Hatchery* report. This time period corresponds with the placements of poult which will reach maturity and be available for slaughter during the calendar year.

Revision Policy: Revisions are generally the result of late or corrected data. Revisions to the previous month are published in the monthly *Turkey Hatchery* report, while annual revisions are published in the *Hatchery Production - Annual Summary* report in April.

Reliability: Turkey hatchery estimates are based on a census of all known operating hatcheries and therefore, have no sampling error. However, estimates are subject to errors such as omission, duplication, and mistakes in reporting, recording, and processing the data. While these errors cannot be measured directly, they are minimized through strict quality controls in the data collection process and through a careful review of all reported data for consistency and reasonableness.

To assist in evaluating the reliability of the estimates in this report, the “Root Mean Square Error” is shown for selected items in the following table. The “Root Mean Square Error” is a statistical measure based on past performance and is computed using the differences between first and final estimates. The “Root Mean Square Error” for turkey eggs in incubators on the first day of the month over the past 24 months is 2.9 percent. This means that chances are 2 out of 3 that the final estimate will not be above or below the current estimate of 26.0 million eggs by more than 2.9 percent. Chances are 9 out of 10 that the difference will not exceed 5.0 percent.

Reliability of July Turkey Hatchery Estimates

[Based on data for the past 24 months]

Item	Root mean square error	90 percent confidence level	Difference between first and latest estimate				
			Average	Smallest	Largest	Months	
						Below latest	Above latest
	(percent)	(percent)	(1,000)	(1,000)	(1,000)	(number)	(number)
Eggs in incubators	2.9	5.0	543	1	2,201	14	10
Poult hatched	1.8	3.1	257	0	1,319	13	10
Net poult placements	2.1	3.7	318	0	1,329	17	6

Information Contacts

Listed below are the commodity specialists in the Livestock Branch of the National Agricultural Statistics Service to contact for additional information. E-mail inquiries may be sent to nass@usda.gov

Travis Averill, Chief, Livestock Branch	(202) 692-0069
Jean Porter, Head, Poultry and Specialty Commodities Section	(202) 690-3223
Holly Brenize – Poultry Slaughter.....	(202) 720-0585
Alissa Cowell-Mytar – Cold Storage, Capacity of Refrigerated Warehouses	(202) 720-4751
Liana Cuffman – Catfish and Trout, Mink, Census of Aquaculture	(202) 720-8784
Fatema Haque – Turkey Hatchery, Turkeys Raised	(202) 720-3244
Derron Martin – Chicken Hatchery, Egg Products	(202) 690-3237
Seth Riggins – Honey, Honey Bee Colonies	(202) 690-4870
Autumn Stone – Layers, Eggs	(202) 690-3676
Takiyah Walker – Broiler Hatchery.....	(202) 720-6147

Access to NASS Reports

For your convenience, you may access NASS reports and products the following ways:

- All reports are available electronically, at no cost, on the NASS web site: www.nass.usda.gov
- Both national and state specific reports are available via a free e-mail subscription. To set-up this free subscription, visit www.nass.usda.gov and click on “National” or “State” in upper right corner above “search” box to create an account and select the reports you would like to receive.
- Cornell’s Mann Library has launched a new website housing NASS’s and other agency’s archived reports. The new website, <https://usda.library.cornell.edu>. All email subscriptions containing reports will be sent from the new website, <https://usda.library.cornell.edu>. To continue receiving the reports via e-mail, you will have to go to the new website, create a new account and re-subscribe to the reports. If you need instructions to set up an account or subscribe, they are located at: <https://usda.library.cornell.edu/help>. You should whitelist notifications@usda-esmis.library.cornell.edu in your email client to avoid the emails going into spam/junk folders.

For more information on NASS surveys and reports, call the NASS Agricultural Statistics Hotline at (800) 727-9540, 7:30 a.m. to 4:00 p.m. ET, or e-mail: nass@usda.gov.

The U.S. Department of Agriculture (USDA) prohibits discrimination against its customers, employees, and applicants for employment on the basis of race, color, national origin, age, disability, sex, gender identity, religion, reprisal, and where applicable, political beliefs, marital status, familial or parental status, sexual orientation, or all or part of an individual's income is derived from any public assistance program, or protected genetic information in employment or in any program or activity conducted or funded by the Department. (Not all prohibited bases will apply to all programs and/or employment activities.)

If you wish to file a Civil Rights program complaint of discrimination, complete the [USDA Program Discrimination Complaint Form](#) (PDF), found online at www.ascr.usda.gov/filing-program-discrimination-complaint-usda-customer, or at any USDA office, or call (866) 632-9992 to request the form. You may also write a letter containing all of the information requested in the form. Send your completed complaint form or letter to us by mail at U.S. Department of Agriculture, Director, Office of Adjudication, 1400 Independence Avenue, S.W., Washington, D.C. 20250-9410, by fax (202) 690-7442 or email at program.intake@usda.gov.