



Released September 17, 2018, by the National Agricultural Statistics Service (NASS), Agricultural Statistics Board, United States Department of Agriculture (USDA).

## Eggs in Incubators on September 1 Down 6 Percent from Last Year

Turkey eggs in incubators on September 1, 2018, in the United States totaled 27.1 million, down 6 percent from September 1, 2017. Eggs in incubators were down 7 percent from the August 1, 2018 total of 29.1 million eggs.

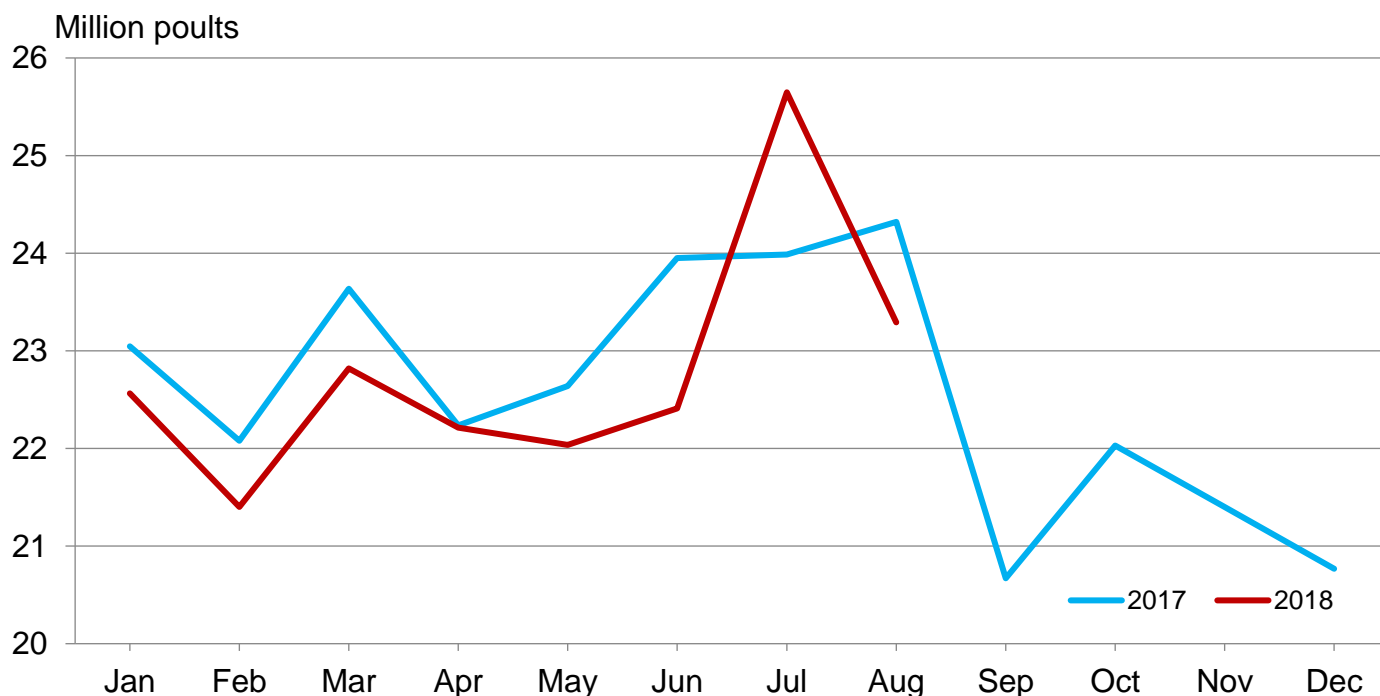
## Poults Hatched During August Down 3 Percent from Last Year

Turkey poults hatched during August 2018, in the United States totaled 24.0 million, down 3 percent from August 2017. Poults hatched were down 7 percent from the July 2018 total of 25.7 million poults.

## Net Poults Placed During August Down 4 Percent from Last Year

The 23.3 million net poults placed during August 2018 in the United States were down 4 percent from the number placed during the same month a year earlier. Net poult placements were down 9 percent from the July 2018 total of 25.6 million.

## Net Poult Placements – United States



## Eggs in Incubators and Poults Hatched by Month – United States: 2016-2018

[Blank data cells indicate estimation period has not yet begun]

Month	Eggs in incubators first of month		Percent of previous year	Poults hatched entire month		Percent of previous year
	2017-2018	2018-2019		2016-2017	2017-2018	
	(1,000 eggs)	(1,000 eggs)	(percent)	(1,000 poults)	(1,000 poults)	(percent)
September .....	28,974	27,120	94	23,645	23,530	100
October .....	28,072			23,572	24,393	103
November .....	28,605			22,782	23,246	102
December .....	27,806			25,422	22,375	88
January .....	28,920			25,412	24,293	96
February .....	28,396			23,679	22,647	96
March .....	28,463			25,812	24,186	94
April .....	28,232			23,278	23,482	101
May .....	28,815			24,169	23,503	97
June .....	28,567			25,125	23,337	93
July .....	28,561			24,691	25,727	104
August .....	29,090			24,868	24,032	97

## Net Poultry Placements by Month – United States: 2016-2018

[Includes imports and excludes exports.]

Month	Total all breeds		Percent of previous year	Cumulative total		Percent of previous year
	2016-2017	2017-2018		2016-2017	2017-2018	
	(1,000 poults)	(1,000 poults)	(percent)	(1,000 poults)	(1,000 poults)	(percent)
September .....	21,581	20,670	96	21,581	20,670	96
October .....	21,381	22,030	103	42,962	42,700	99
November .....	21,334	21,399	100	64,296	64,099	100
December .....	22,980	20,766	90	87,276	84,865	97
January .....	23,046	22,564	98	110,322	107,429	97
February .....	22,078	21,401	97	132,400	128,830	97
March .....	23,636	22,820	97	156,036	151,650	97
April .....	22,237	22,214	100	178,273	173,864	98
May .....	22,639	22,036	97	200,912	195,900	98
June .....	23,950	22,411	94	224,862	218,311	97
July .....	23,987	25,648	107	248,849	243,959	98
August .....	24,321	23,292	96	273,170	267,251	98

## Statistical Methodology

**Survey Procedures:** Data for turkey hatchery estimates are collected from all known turkey hatcheries. Individual NASS regional field offices maintain a list of all known turkey hatcheries and use known sources of hatcheries to update their lists. Approximately 40 hatcheries are contacted each month. All known turkey hatcheries hatching 15,000 or more poults annually are mailed a questionnaire as close to the first of the month as possible. Adequate time is given to respond via mail, fax, or electronic data reporting (EDR). Those that do not respond are contacted by phone. Care is exercised to ensure that all hatcheries are accounted for in the estimate.

**Estimating Procedures:** Sound statistical methodology is employed to derive the estimates from reported data. All data are analyzed for unusual values. Data from each operation are compared to their own past operating profile and to trends from similar operations. Data for missing operations were estimated based on similar operations or historical data. NASS regional field offices prepare these estimates by using a combination of survey indications and historic trends. Individual State estimates are reviewed by the Agricultural Statistics Board for reasonableness. Individual hatchery data are summed to State, regional, and United States totals. Only United States level estimates are published due to the limited number of hatcheries involved. The Net Poult Placement data include imported poults and exclude exported poults.

Cumulative net poult placements beginning on September 1 and ending on August 31 are shown in the monthly *Turkey Hatchery* report. This time period corresponds with the placements of poults which will reach maturity and be available for slaughter during the calendar year.

States reporting turkey hatcheries are: Arkansas, California, Florida, Idaho, Indiana, Iowa, Massachusetts, Michigan, Minnesota, Missouri, Nebraska, North Carolina, New Mexico, Ohio, Pennsylvania, Virginia, West Virginia, and Wisconsin.

**Revision Policy:** Revisions are generally the result of late or corrected data. Revisions to the previous month are published in the monthly *Turkey Hatchery* report, while annual revisions are published in the *Hatchery Production - Annual Summary* report in April.

**Reliability:** Turkey hatchery estimates are based on a census of all known operating hatcheries and therefore, have no sampling error. However, estimates are subject to errors such as omission, duplication, and mistakes in reporting, recording, and processing the data. While these errors cannot be measured directly, they are minimized through strict quality controls in the data collection process and through a careful review of all reported data for consistency and reasonableness.

To assist in evaluating the reliability of the estimates in this report, the “Root Mean Square Error” is shown for selected items in the following table. The “Root Mean Square Error” is a statistical measure based on past performance and is computed using the differences between first and final estimates. The “Root Mean Square Error” for turkey eggs in incubators on the first day of the month over the past 24 months is 1.5 percent. This means that chances are 2 out of 3 that the final estimate will not be above or below the current estimate of 27.1 million eggs by more than 1.5 percent. Chances are 9 out of 10 that the difference will not exceed 2.6 percent.

### Reliability of September Turkey Hatchery Estimates

[Based on data for the past 24 months]

Item	Root mean square error	90 percent confidence level	Difference between first and latest estimate				
			Average	Smallest	Largest	Months	
						Below latest	Above latest
	(percent)	(percent)	(1,000)	(1,000)	(1,000)	(number)	(number)
Eggs in incubators .....	1.5	2.6	287	4	1,359	20	4
Poults hatched .....	0.8	1.3	137	6	577	15	9
Net poult placements .....	1.7	2.9	313	44	810	7	17

## Information Contacts

Listed below are the commodity specialists in the Livestock Branch of the National Agricultural Statistics Service to contact for additional information. E-mail inquiries may be sent to [nass@nass.usda.gov](mailto:nass@nass.usda.gov)

Travis Averill, Chief, Livestock Branch .....	(202) 720-3570
Tony Dorn, Head, Poultry and Specialty Commodities Section .....	(202) 690-3223
Holly Brenize – Poultry Slaughter .....	(202) 720-0585
Alissa Cowell-Mytar – Cold Storage, Capacity of Refrigerated Warehouses .....	(202) 720-4751
Liana Cuffman – Catfish and Trout, Egg Products, Mink, Census of Aquaculture .....	(202) 720-8784
Fatema Haque – Broiler Hatchery, Chicken Hatchery .....	(202) 720-3244
Kim Linonis – Layers, Eggs .....	(202) 690-3676
Adam Peters – Turkey Hatchery, Turkeys Raised .....	(202) 690-3237
Erica Sadler – Cost of Pollination, Honey, Honey Bee Colonies .....	(202) 720-6147

## Access to NASS Reports

For your convenience, you may access NASS reports and products the following ways:

- All reports are available electronically, at no cost, on the NASS web site: [www.nass.usda.gov](http://www.nass.usda.gov)
- Both national and state specific reports are available via a free e-mail subscription. To set-up this free subscription, visit [www.nass.usda.gov](http://www.nass.usda.gov) and click on “National” or “State” in upper right corner above “search” box to create an account and select the reports you would like to receive.

For more information on NASS surveys and reports, call the NASS Agricultural Statistics Hotline at (800) 727-9540, 7:30 a.m. to 4:00 p.m. ET, or e-mail: [nass@nass.usda.gov](mailto:nass@nass.usda.gov).

The U.S. Department of Agriculture (USDA) prohibits discrimination against its customers, employees, and applicants for employment on the basis of race, color, national origin, age, disability, sex, gender identity, religion, reprisal, and where applicable, political beliefs, marital status, familial or parental status, sexual orientation, or all or part of an individual's income is derived from any public assistance program, or protected genetic information in employment or in any program or activity conducted or funded by the Department. (Not all prohibited bases will apply to all programs and/or employment activities.)

If you wish to file a Civil Rights program complaint of discrimination, complete the [USDA Program Discrimination Complaint Form](#) (PDF), found online at [www.ascr.usda.gov/filing-program-discrimination-complaint-usda-customer](http://www.ascr.usda.gov/filing-program-discrimination-complaint-usda-customer), or at any USDA office, or call (866) 632-9992 to request the form. You may also write a letter containing all of the information requested in the form. Send your completed complaint form or letter to us by mail at U.S. Department of Agriculture, Director, Office of Adjudication, 1400 Independence Avenue, S.W., Washington, D.C. 20250-9410, by fax (202) 690-7442 or email at [program.intake@usda.gov](mailto:program.intake@usda.gov).