



Released October 15, 2021, by the National Agricultural Statistics Service (NASS), Agricultural Statistics Board, United States Department of Agriculture (USDA).

Eggs in Incubators on October 1 Down 1 Percent from Last Year

Turkey eggs in incubators on October 1, 2021 in the United States totaled 27.1 million, down 1 percent from October 1, 2020. Eggs in incubators were up 6 percent from the September 1, 2021 total of 25.6 million eggs.

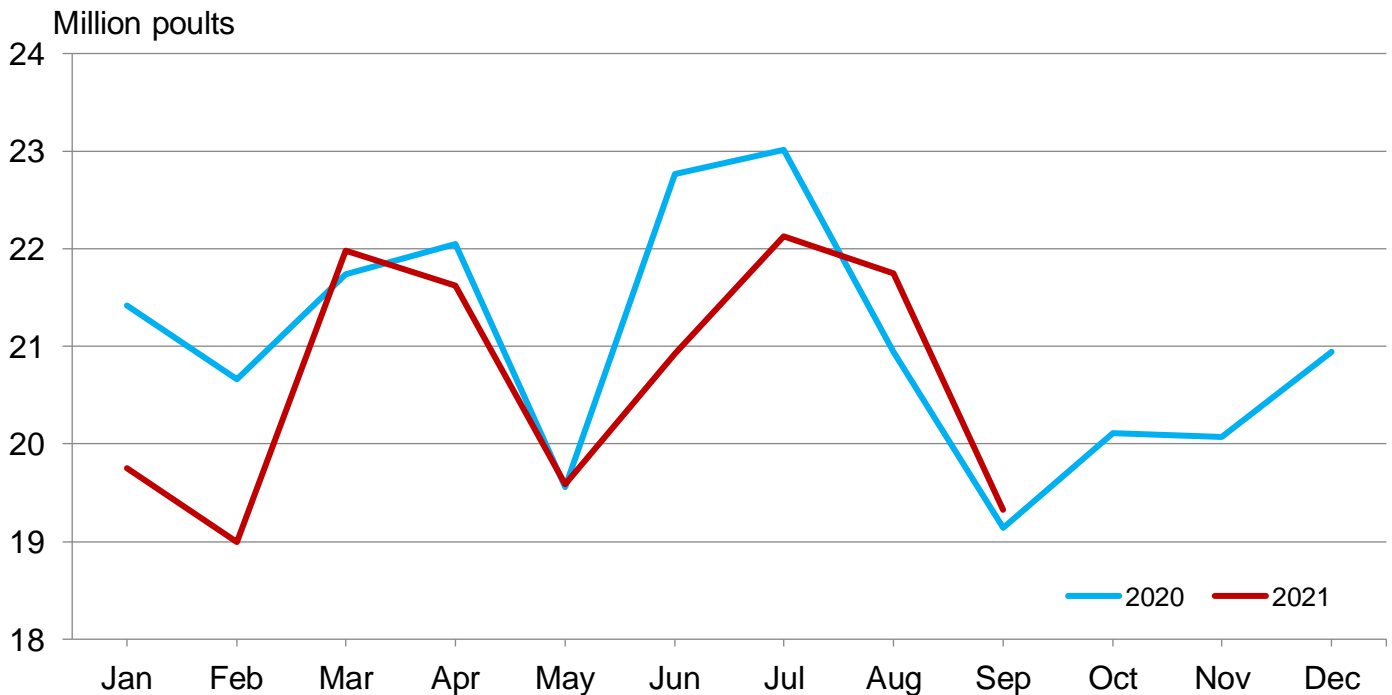
Poults Hatched During September Down 3 Percent from Last Year

Turkey poults hatched during September 2021 in the United States totaled 21.2 million, down 3 percent from September 2020. Poults hatched were down 7 percent from the August 2021 total of 22.9 million poults.

Net Poults Placed During September Up 1 Percent from Last Year

The 19.3 million net poults placed during September 2021 in the United States were up 1 percent from the number placed during the same month a year earlier. Net poult placements were down 11 percent from the August 2021 total of 21.8 million.

Net Poult Placements – United States



Eggs in Incubators and Poults Hatched by Month – United States: 2020-2022

[Blank data cells indicate estimation period has not yet begun]

| Month | Eggs in incubators first of month | | Percent of previous year | Poults hatched entire month | | Percent of previous year |
|-----------------|-----------------------------------|--------------|--------------------------|-----------------------------|----------------|--------------------------|
| | 2020-2021 | 2021-2022 | | 2020-2021 | 2021-2022 | |
| | (1,000 eggs) | (1,000 eggs) | (percent) | (1,000 poults) | (1,000 poults) | (percent) |
| September | 25,989 | 25,639 | 99 | 21,840 | 21,187 | 97 |
| October | 27,293 | 27,058 | 99 | 23,290 | | |
| November | 26,764 | | | 22,230 | | |
| December | 26,982 | | | 23,090 | | |
| January | 24,635 | | | 21,502 | | |
| February | 26,153 | | | 20,705 | | |
| March | 26,150 | | | 23,269 | | |
| April | 27,547 | | | 22,599 | | |
| May | 25,403 | | | 20,903 | | |
| June | 25,958 | | | 21,714 | | |
| July | 26,396 | | | 22,561 | | |
| August | 26,973 | | | 22,892 | | |

Net Poulst Placements by Month – United States: 2020-2022

[Includes imports and excludes exports. Blank data cells indicate estimation period has not yet begun]

| Month | Total all breeds | | Percent of previous year | Cumulative total | | Percent of previous year |
|-----------------|------------------|----------------|--------------------------|------------------|----------------|--------------------------|
| | 2020-2021 | 2021-2022 | | 2020-2021 | 2021-2022 | |
| | (1,000 poults) | (1,000 poults) | (percent) | (1,000 poults) | (1,000 poults) | (percent) |
| September | 19,141 | 19,327 | 101 | 19,141 | 19,327 | 101 |
| October | 20,114 | | | 39,255 | | |
| November | 20,070 | | | 59,325 | | |
| December | 20,569 | | | 79,894 | | |
| January | 19,751 | | | 99,645 | | |
| February | 18,995 | | | 118,640 | | |
| March | 21,982 | | | 140,622 | | |
| April | 21,620 | | | 162,242 | | |
| May | 19,584 | | | 181,826 | | |
| June | 20,926 | | | 202,752 | | |
| July | 22,127 | | | 224,879 | | |
| August | 21,751 | | | 246,630 | | |

Statistical Methodology

Survey Procedures: Data for turkey hatchery estimates are collected from all known turkey hatcheries. Individual NASS regional field offices maintain a list of all known turkey hatcheries and use known sources of hatcheries to update their lists. Approximately 45 hatcheries in 20 states are contacted each month. All known turkey hatcheries hatching 15,000 or more poult annually are mailed a questionnaire as close to the first of the month as possible. Adequate time is given to respond via mail, fax, or electronic data reporting. Those that do not respond are contacted by phone. Care is exercised to ensure that all hatcheries are accounted for in the estimate.

Estimating Procedures: Sound statistical methodology is employed to derive the estimates from reported data. All data are analyzed for unusual values. Data from each operation are compared to their own past operating profile and to trends from similar operations. Data for missing operations were estimated based on similar operations or historical data. NASS regional field offices prepare these estimates by using a combination of survey indications and historic trends. Individual State estimates are reviewed by the Agricultural Statistics Board for reasonableness. Individual hatchery data are summed to State, regional, and United States totals. Only United States level estimates are published due to the limited number of hatcheries involved. The Net Poult Placement data include imported poult and exclude exported poult.

Cumulative net poult placements beginning on September 1 and ending on August 31 are shown in the monthly *Turkey Hatchery* report. This time period corresponds with the placements of poult which will reach maturity and be available for slaughter during the calendar year.

Revision Policy: Revisions are generally the result of late or corrected data. Revisions to the previous month are published in the monthly *Turkey Hatchery* report, while annual revisions are published in the *Hatchery Production - Annual Summary* report in April.

Reliability: Turkey hatchery estimates are based on a census of all known operating hatcheries and therefore, have no sampling error. However, estimates are subject to errors such as omission, duplication, and mistakes in reporting, recording, and processing the data. While these errors cannot be measured directly, they are minimized through strict quality controls in the data collection process and through a careful review of all reported data for consistency and reasonableness.

To assist in evaluating the reliability of the estimates in this report, the “Root Mean Square Error” is shown for selected items in the following table. The “Root Mean Square Error” is a statistical measure based on past performance and is computed using the differences between first and final estimates. The “Root Mean Square Error” for turkey eggs in incubators on the first day of the month over the past 24 months is 3.0 percent. This means that chances are 2 out of 3 that the final estimate will not be above or below the current estimate of 27.1 million eggs by more than 3.0 percent. Chances are 9 out of 10 that the difference will not exceed 5.1 percent.

Reliability of October Turkey Hatchery Estimates

[Based on data for the past 24 months]

| Item | Root mean square error | 90 percent confidence level | Difference between first and latest estimate | | | | |
|----------------------------|------------------------|-----------------------------|--|----------|---------|--------------|--------------|
| | | | Average | Smallest | Largest | Months | |
| | | | | | | Below latest | Above latest |
| | (percent) | (percent) | (1,000) | (1,000) | (1,000) | (number) | (number) |
| Eggs in incubators | 3.0 | 5.1 | 569 | 1 | 2,201 | 15 | 9 |
| Poult hatched | 1.9 | 3.2 | 272 | 0 | 1,319 | 14 | 9 |
| Net poult placements | 2.2 | 3.7 | 321 | 0 | 1,329 | 18 | 5 |

Information Contacts

Listed below are the commodity specialists in the Livestock Branch of the National Agricultural Statistics Service to contact for additional information. E-mail inquiries may be sent to nass@usda.gov

| | |
|---|----------------|
| Travis Averill, Chief, Livestock Branch | (202) 692-0069 |
| Jean Porter, Head, Poultry and Specialty Commodities Section | (202) 690-3223 |
| Holly Brenize – Poultry Slaughter..... | (202) 720-0585 |
| Alissa Cowell-Mytar – Cold Storage, Capacity of Refrigerated Warehouses | (202) 720-4751 |
| Liana Cuffman – Catfish and Trout, Mink, Census of Aquaculture | (202) 720-8784 |
| Fatema Haque – Turkey Hatchery, Turkeys Raised | (202) 720-3244 |
| Derron Martin – Chicken Hatchery, Egg Products | (202) 690-3237 |
| Seth Riggins – Honey, Honey Bee Colonies | (202) 690-4870 |
| Autumn Stone – Layers, Eggs | (202) 690-3676 |
| Takiyah Walker – Broiler Hatchery..... | (202) 720-6147 |

Access to NASS Reports

For your convenience, you may access NASS reports and products the following ways:

- All reports are available electronically, at no cost, on the NASS web site: www.nass.usda.gov
- Both national and state specific reports are available via a free e-mail subscription. To set-up this free subscription, visit www.nass.usda.gov and click on “National” or “State” in upper right corner above “search” box to create an account and select the reports you would like to receive.
- Cornell’s Mann Library has launched a new website housing NASS’s and other agency’s archived reports. The new website, <https://usda.library.cornell.edu>. All email subscriptions containing reports will be sent from the new website, <https://usda.library.cornell.edu>. To continue receiving the reports via e-mail, you will have to go to the new website, create a new account and re-subscribe to the reports. If you need instructions to set up an account or subscribe, they are located at: <https://usda.library.cornell.edu/help>. You should whitelist notifications@usda-esmis.library.cornell.edu in your email client to avoid the emails going into spam/junk folders.

For more information on NASS surveys and reports, call the NASS Agricultural Statistics Hotline at (800) 727-9540, 7:30 a.m. to 4:00 p.m. ET, or e-mail: nass@usda.gov.

The U.S. Department of Agriculture (USDA) prohibits discrimination against its customers, employees, and applicants for employment on the basis of race, color, national origin, age, disability, sex, gender identity, religion, reprisal, and where applicable, political beliefs, marital status, familial or parental status, sexual orientation, or all or part of an individual's income is derived from any public assistance program, or protected genetic information in employment or in any program or activity conducted or funded by the Department. (Not all prohibited bases will apply to all programs and/or employment activities.)

If you wish to file a Civil Rights program complaint of discrimination, complete the [USDA Program Discrimination Complaint Form](#) (PDF), found online at www.ascr.usda.gov/filing-program-discrimination-complaint-usda-customer, or at any USDA office, or call (866) 632-9992 to request the form. You may also write a letter containing all of the information requested in the form. Send your completed complaint form or letter to us by mail at U.S. Department of Agriculture, Director, Office of Adjudication, 1400 Independence Avenue, S.W., Washington, D.C. 20250-9410, by fax (202) 690-7442 or email at program.intake@usda.gov.