



Cattle on Feed

ISSN: 1948-9080

Released September 21, 2018, by the National Agricultural Statistics Service (NASS), Agricultural Statistics Board, United States Department of Agriculture (USDA).

Special Note

The December 2018 Cattle on Feed report will be released on December 20, 2018 at 3:00 P.M. EST at www.nass.usda.gov. Please contact the Livestock Branch at (202) 720-3570 or email at hq_sd_lb@nass.usda.gov with any questions or concerns.

United States Cattle on Feed Up 6 Percent

Cattle and calves on feed for the slaughter market in the United States for feedlots with capacity of 1,000 or more head totaled 11.1 million head on September 1, 2018. The inventory was 6 percent above September 1, 2017. This is the highest September 1 inventory since the series began in 1996.

Placements in feedlots during August totaled 2.07 million head, 7 percent above 2017. Net placements were 2.02 million head. During August, placements of cattle and calves weighing less than 600 pounds were 430,000 head, 600-699 pounds were 335,000 head, 700-799 pounds were 460,000 head, 800-899 pounds were 475,000 head, 900-999 pounds were 240,000 head, and 1,000 pounds and greater were 130,000 head.

Marketings of fed cattle during August totaled 1.98 million head, slightly above 2017.

Other disappearance totaled 55,000 head during August, 12 percent above 2017.

Cattle on Feed Inventory, Placements, Marketings, and Other Disappearance on 1,000+ Capacity Feedlots – United States: September 1, 2017 and 2018

Item	Number		Percent of previous year
	2017	2018	
	(1,000 head)	(1,000 head)	(percent)
On feed August 1	10,604	11,093	105
Placed on feed during August	1,928	2,070	107
Fed cattle marketed during August	1,979	1,983	100
Other disappearance during August	49	55	112
On feed September 1	10,504	11,125	106

Cattle on Feed Inventory, Placements, Marketings, and Other Disappearance on 1,000+ Capacity Feedlots – United States: August 1, 2017 and 2018

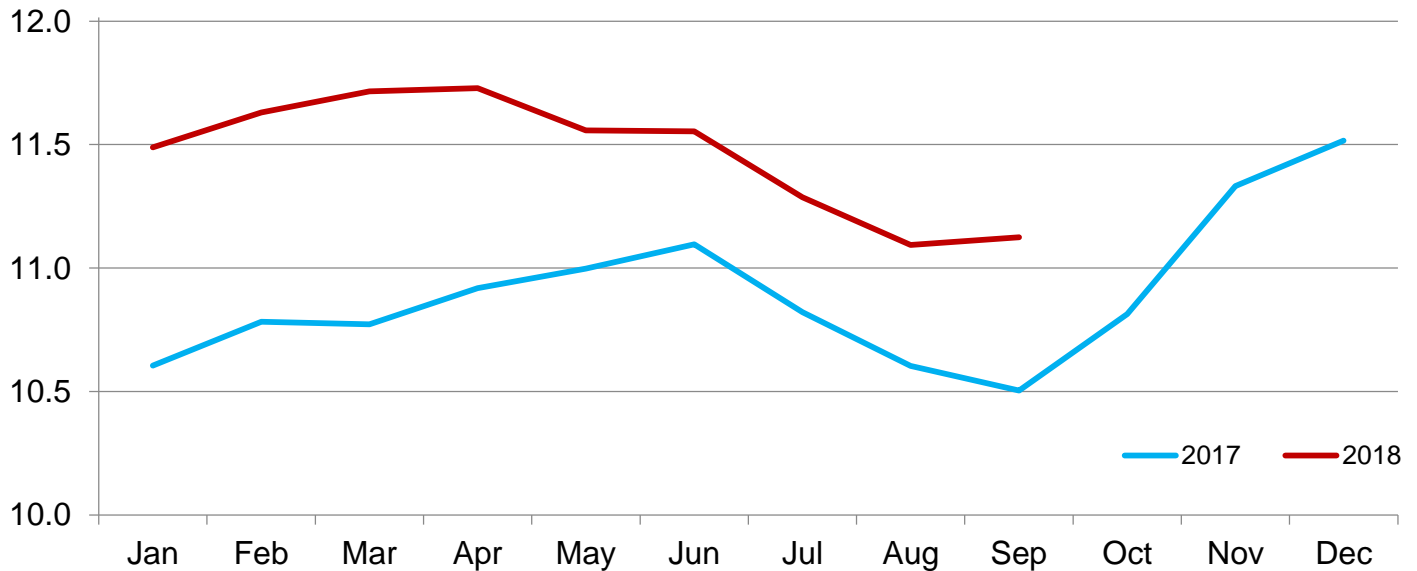
Item	Number		Percent of previous year
	2017	2018	
	(1,000 head)	(1,000 head)	(percent)
On feed July 1	10,821	11,287	104
Placed on feed during July	1,615	1,742	108
Fed cattle marketed during July	1,784	1,873	105
Other disappearance during July	48	63	131
On feed August 1	10,604	11,093	105

Cattle on Feed Inventory on 1,000+ Capacity Feedlots by Month – States and United States: 2017 and 2018

State	September 1, 2017	August 1, 2018	September 1, 2018		
			Number	Percent of previous year	Percent of previous month
	(1,000 head)	(1,000 head)	(1,000 head)	(percent)	(percent)
Arizona	244	298	295	121	99
California	420	525	525	125	100
Colorado	860	890	900	105	101
Idaho	240	245	255	106	104
Iowa	640	700	680	106	97
Kansas	2,220	2,230	2,310	104	104
Minnesota	120	130	125	104	96
Nebraska	2,150	2,330	2,330	108	100
Oklahoma	315	315	320	102	102
South Dakota	215	200	200	93	100
Texas	2,590	2,720	2,680	103	99
Washington	200	220	210	105	95
Other States	290	290	295	102	102
United States	10,504	11,093	11,125	106	100

Cattle on Feed Inventory on 1,000+ Capacity Feedlots – United States

Million head

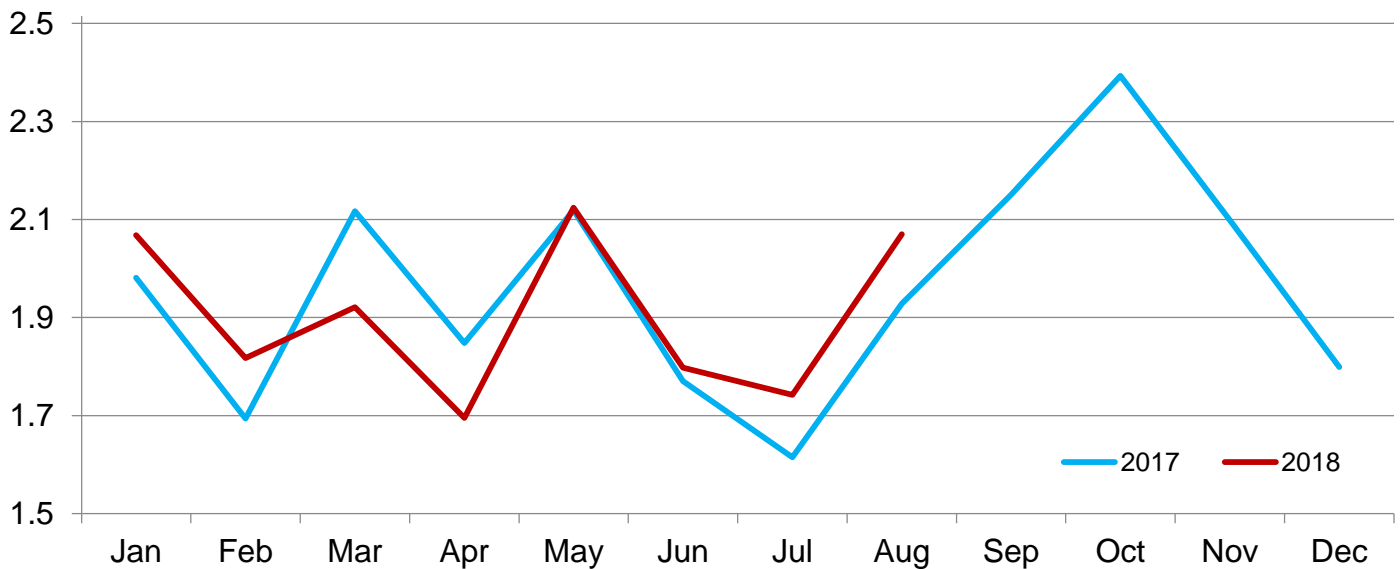


Cattle Placed on Feed on 1,000+ Capacity Feedlots by Month – States and United States: 2017 and 2018

State	During August 2017 (1,000 head)	During July 2018 (1,000 head)	During August 2018		
			Number (1,000 head)	Percent of previous year (percent)	Percent of previous month (percent)
Arizona	20	23	20	100	87
California	39	52	54	138	104
Colorado	175	140	205	117	146
Idaho	44	44	57	130	130
Iowa	92	66	82	89	124
Kansas	495	465	520	105	112
Minnesota	20	17	23	115	135
Nebraska	470	400	480	102	120
Oklahoma	65	45	65	100	144
South Dakota	45	26	49	109	188
Texas	385	385	415	108	108
Washington	33	31	35	106	113
Other States	45	48	65	144	135
United States	1,928	1,742	2,070	107	119

Cattle Placed on 1,000+ Capacity Feedlots – United States

Million head



Cattle Placed on Feed by Weight Group on 1,000+ Capacity Feedlots and Month – States and United States: 2017 and 2018

State	During August 2017							
	Under 600 lbs (1,000 head)	600-699 lbs (1,000 head)	700-799 lbs (1,000 head)	800-899 lbs (1,000 head)	900+ lbs ¹ (1,000 head)	900-999 lbs (1,000 head)	1,000+ lbs (1,000 head)	Total (1,000 head)
Colorado	25	20	30	50	50	(D)	(D)	175
Kansas	70	95	135	120	75	(D)	(D)	495
Nebraska	40	40	90	140	160	(D)	(D)	470
Texas	135	85	90	60	15	(D)	(D)	385
Other States ...	90	45	73	115	80	(D)	(D)	403
United States ..	360	285	418	485	(X)	270	110	1,928
State	During July 2018							
	Under 600 lbs (1,000 head)	600-699 lbs (1,000 head)	700-799 lbs (1,000 head)	800-899 lbs (1,000 head)	900+ lbs ¹ (1,000 head)	900-999 lbs (1,000 head)	1,000+ lbs (1,000 head)	Total (1,000 head)
Colorado	30	20	30	30	30	(D)	(D)	140
Kansas	60	95	155	105	50	(D)	(D)	465
Nebraska	45	45	90	120	100	(D)	(D)	400
Texas	165	95	70	40	15	(D)	(D)	385
Other States ...	110	35	70	72	65	(D)	(D)	352
United States ..	410	290	415	367	(X)	175	85	1,742
State	During August 2018							
	Under 600 lbs (1,000 head)	600-699 lbs (1,000 head)	700-799 lbs (1,000 head)	800-899 lbs (1,000 head)	900+ lbs ¹ (1,000 head)	900-999 lbs (1,000 head)	1,000+ lbs (1,000 head)	Total (1,000 head)
Colorado	35	25	40	50	55	(D)	(D)	205
Kansas	70	115	150	120	65	(D)	(D)	520
Nebraska	50	45	90	145	150	(D)	(D)	480
Texas	165	100	90	50	10	(D)	(D)	415
Other States ...	110	50	90	110	90	(D)	(D)	450
United States ..	430	335	460	475	(X)	240	130	2,070

(D) Withheld to avoid disclosing data for individual operations.

(X) Not applicable.

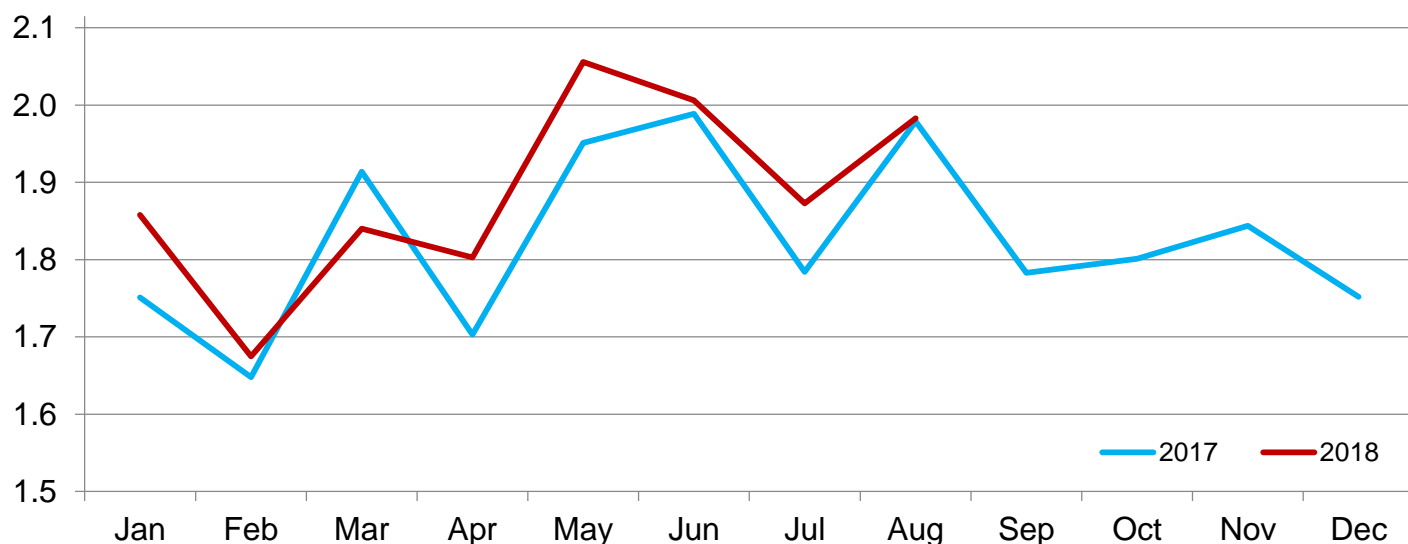
¹ The 900 pounds and greater weight group is the sum of 900-999 pounds and 1,000 pounds and greater weight groups.

Cattle Marketed on 1,000+ Capacity Feedlots by Month – States and United States: 2017 and 2018

State	During August 2017 (1,000 head)	During July 2018 (1,000 head)	During August 2018		
			Number (1,000 head)	Percent of previous year (percent)	Percent of previous month (percent)
Arizona	19	21	22	116	105
California	46	53	50	109	94
Colorado	190	170	190	100	112
Idaho	52	38	46	88	121
Iowa	101	74	100	99	135
Kansas	445	465	430	97	92
Minnesota	29	21	27	93	129
Nebraska	470	460	470	100	102
Oklahoma	64	43	59	92	137
South Dakota	49	37	48	98	130
Texas	435	390	440	101	113
Washington	36	40	44	122	110
Other States	43	61	57	133	93
United States	1,979	1,873	1,983	100	106

Cattle Marketed on 1,000+ Capacity Feedlots – United States

Million head



Cattle Other Disappearance on 1,000+ Capacity Feedlots by Month – States and United States: 2017 and 2018

State	During August 2017 (1,000 head)	During July 2018 (1,000 head)	During August 2018		
			Number (1,000 head)	Percent of previous year (percent)	Percent of previous month (percent)
Arizona	1	1	1	100	100
California	3	4	4	133	100
Colorado	5	10	5	100	50
Idaho	2	1	1	50	100
Iowa	1	2	2	200	100
Kansas	10	10	10	100	100
Minnesota	1	1	1	100	100
Nebraska	10	10	10	100	100
Oklahoma	1	2	1	100	50
South Dakota	1	4	1	100	25
Texas	10	15	15	150	100
Washington	2	1	1	50	100
Other States	2	2	3	150	150
United States	49	63	55	112	87

Terms and Definitions of Cattle on Feed Estimates

Cattle on feed are steers and heifers being fed a ration of grain, silage, hay and/or protein supplement for slaughter market that are expected to produce a carcass that will grade select or better. It excludes cattle being "backgrounded only" for later sale as feeders or later placement in another feedlot.

Placements are steers and heifers put into a feedlot, fed a ration which will produce a carcass that will grade select or better, and are intended for the slaughter market.

Marketings are steers and heifers shipped out of feedlots to a slaughter market.

Other disappearance includes death loss, movement from feedlots to pasture, and shipments to other feedlots for further feeding.

Statistical Methodology

Survey Procedures: During January and July all known feedlots in the United States with capacity of 1,000 or more head are surveyed to provide data for cattle on feed estimates. During the other months, all known feedlots from 16 States are surveyed. The 16 States account for approximately 98 percent of the cattle on feed in feedlots with capacity of 1,000 or more head. Individual State estimates are published monthly for 12 of the 16 States. Data collected from the remaining 4 States are used to establish the "Other States" estimates. These 4 States include Illinois, New Mexico, Oregon, and Wyoming. The "Other States" category represents all cattle on feed with a capacity of 1,000 or more head for the rest of the United States.

Estimating Procedures: These cattle on feed estimates were prepared by the Agricultural Statistics Board after reviewing recommendations and analysis submitted by Regional Field Offices. Regional and State survey data were reviewed for reasonableness with each other and with estimates from the previous month when establishing the current estimates.

Revision Policy: Revisions to previous estimates are made to improve month to month relationships. Estimates for the previous month are subject to revision in all States each month when current estimates are made. In February, all monthly estimates for the previous year, and the number of feedlots and annual marketings from two years ago are reviewed and subject to revisions. The reviews are primarily based on slaughter data, state check-off or brand data, and any other data that may have been received after the original estimate was made. Estimates will also be reviewed after data from the *Census of Agriculture* are available. No revisions will be made after that date and estimates become final.

Reliability: Since all 1,000+ capacity cattle on feed operators in every State are not included in the monthly survey, survey estimates are subject to sampling variability. Survey results are also subject to non-sampling errors such as omissions, duplications, and mistakes in reporting, recording, and processing the data. The effects of these errors cannot be measured directly. They are minimized through rigid quality controls in the data collection process and through a careful review of all reported data for consistency and reasonableness.

To assist users in evaluating the reliability of estimates in this report, the "**Root Mean Square Error**" is shown for selected items in the table on the following page. The "Root Mean Square Error" is a statistical measure based on past performance and is computed using the differences between first and latest estimates. The "Root Mean Square Error" for cattle on feed inventory estimates over the past 24 months is 0.0 percent. This means that chances are 2 out of 3 that the final estimate will not be above or below the current estimate of 11.1 million head by more than 0.0 percent. Chances are 9 out of 10 that the difference will not exceed 0.1 percent.

The table on the following page shows a 24 month record of the range of differences between first and latest estimates for selected items. Using estimates of number on feed as an example, changes between the first estimate and the latest estimate during the past 24 months have averaged 1,000 head, ranging from 0 to 15,000 head. During this period the initial estimate has been above the latest estimate 1 time and has been below the latest estimate 2 times. This does not imply that the initial estimate is likely to understate or overstate final inventory.

Reliability of Monthly Cattle on Feed Estimates

[Based on data for the past 24 months]

Item	Root mean square error	90 percent confidence level	Difference between first and latest estimate				
			Average	Smallest	Largest	Months	
						Below latest	Above latest
	(percent)	(percent)	(1,000)	(1,000)	(1,000)	(number)	(number)
Number on feed	0.0	0.1	1	0	15	2	1
Placements	0.2	0.4	2	0	15	2	2
Marketings	0.1	0.2	0	0	10	0	1

Information Contacts

Listed below are the commodity specialists in the Livestock Branch of the National Agricultural Statistics Service to contact for additional information. E-mail inquiries may be sent to nass@nass.usda.gov.

Travis Averill, Chief, Livestock Branch	(202) 720-3570
Scott Hollis, Head, Livestock Section	(202) 690-2424
Sherry Bertramsen – Livestock Slaughter	(202) 690-8632
Holly Brenize – Sheep and Goats	(202) 720-0585
Donnie Fike – Dairy Products	(202) 720-4448
Heidi Gleich – Cattle, Cattle on Feed	(202) 720-3040
Mike Miller – Milk Production and Milk Cows	(202) 720-3278
Seth Riggins – Hogs and Pigs	(202) 720-3106

Access to NASS Reports

For your convenience, you may access NASS reports and products the following ways:

- All reports are available electronically, at no cost, on the NASS web site: www.nass.usda.gov
- Both national and state specific reports are available via a free e-mail subscription. To set-up this free subscription, visit www.nass.usda.gov and click on “National” or “State” in upper right corner above “search” box to create an account and select the reports you would like to receive.

For more information on NASS surveys and reports, call the NASS Agricultural Statistics Hotline at (800) 727-9540, 7:30 a.m. to 4:00 p.m. ET, or e-mail: nass@nass.usda.gov.

The U.S. Department of Agriculture (USDA) prohibits discrimination against its customers, employees, and applicants for employment on the basis of race, color, national origin, age, disability, sex, gender identity, religion, reprisal, and where applicable, political beliefs, marital status, familial or parental status, sexual orientation, or all or part of an individual's income is derived from any public assistance program, or protected genetic information in employment or in any program or activity conducted or funded by the Department. (Not all prohibited bases will apply to all programs and/or employment activities.)

If you wish to file a Civil Rights program complaint of discrimination, complete the [USDA Program Discrimination Complaint Form](#) (PDF), found online at www.ascr.usda.gov/filing-program-discrimination-complaint-usda-customer, or at any USDA office, or call (866) 632-9992 to request the form. You may also write a letter containing all of the information requested in the form. Send your completed complaint form or letter to us by mail at U.S. Department of Agriculture, Director, Office of Adjudication, 1400 Independence Avenue, S.W., Washington, D.C. 20250-9410, by fax (202) 690-7442 or email at program.intake@usda.gov.