



Released May 22, 2020, by the National Agricultural Statistics Service (NASS), Agricultural Statistics Board, United States Department of Agriculture (USDA).

United States Cattle on Feed Down 5 Percent

Cattle and calves on feed for the slaughter market in the United States for feedlots with capacity of 1,000 or more head totaled 11.2 million head on May 1, 2020. The inventory was 5 percent below May 1, 2019.

Placements in feedlots during April totaled 1.43 million head, 22 percent below 2019. Placements were the second lowest for April since the series began in 1996. Net placements were 1.36 million head. During April, placements of cattle and calves weighing less than 600 pounds were 295,000 head, 600-699 pounds were 180,000 head, 700-799 pounds were 315,000 head, 800-899 pounds were 392,000 head, 900-999 pounds were 180,000 head, and 1,000 pounds and greater were 70,000 head.

Marketings of fed cattle during April totaled 1.46 million head, 24 percent below 2019. April marketings are the lowest since the series began in 1996.

Other disappearance totaled 70,000 head during April, 17 percent above 2019.

Cattle on Feed Inventory, Placements, Marketings, and Other Disappearance on 1,000+ Capacity Feedlots – United States: May 1, 2019 and 2020

Item	Number		Percent of previous year
	2019	2020	
	(1,000 head)	(1,000 head)	(percent)
On feed April 1	11,953	11,297	95
Placed on feed during April	1,842	1,432	78
Fed cattle marketed during April	1,928	1,459	76
Other disappearance during April	60	70	117
On feed May 1	11,807	11,200	95

Cattle on Feed Inventory, Placements, Marketings, and Other Disappearance on 1,000+ Capacity Feedlots – United States: April 1, 2019 and 2020

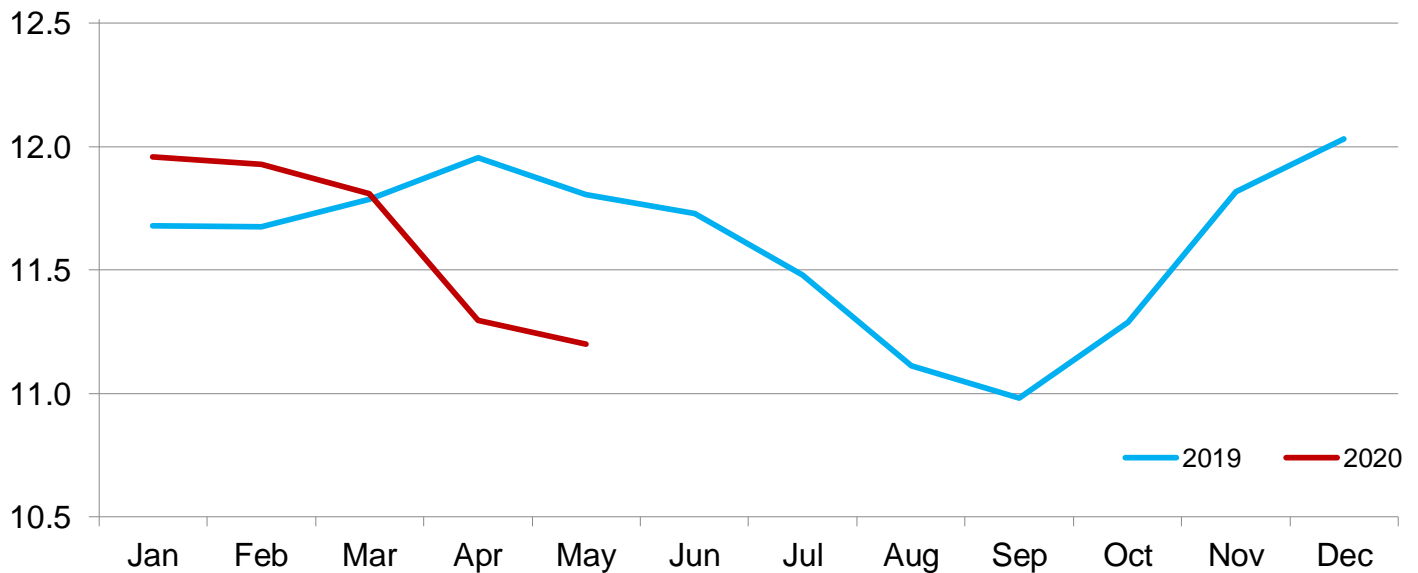
Item	Number		Percent of previous year
	2019	2020	
	(1,000 head)	(1,000 head)	(percent)
On feed March 1	11,785	11,811	100
Placed on feed during March	2,014	1,557	77
Fed cattle marketed during March	1,777	2,010	113
Other disappearance during March	69	61	88
On feed April 1	11,953	11,297	95

Cattle on Feed Inventory on 1,000+ Capacity Feedlots by Month – States and United States: 2019 and 2020

State	May 1, 2019	April 1, 2020	May 1, 2020		
			Number	Percent of previous year	Percent of previous month
	(1,000 head)	(1,000 head)	(1,000 head)	(percent)	(percent)
Arizona	302	262	265	88	101
California	530	535	530	100	99
Colorado	1,060	960	950	90	99
Idaho	285	285	280	98	98
Iowa	680	630	620	91	98
Kansas	2,380	2,290	2,320	97	101
Minnesota	140	130	130	93	100
Nebraska	2,560	2,390	2,370	93	99
Oklahoma	305	305	295	97	97
South Dakota	245	215	205	84	95
Texas	2,790	2,760	2,690	96	97
Washington	235	235	245	104	104
Other States	295	300	300	102	100
United States	11,807	11,297	11,200	95	99

Cattle on Feed Inventory on 1,000+ Capacity Feedlots – United States

Million head

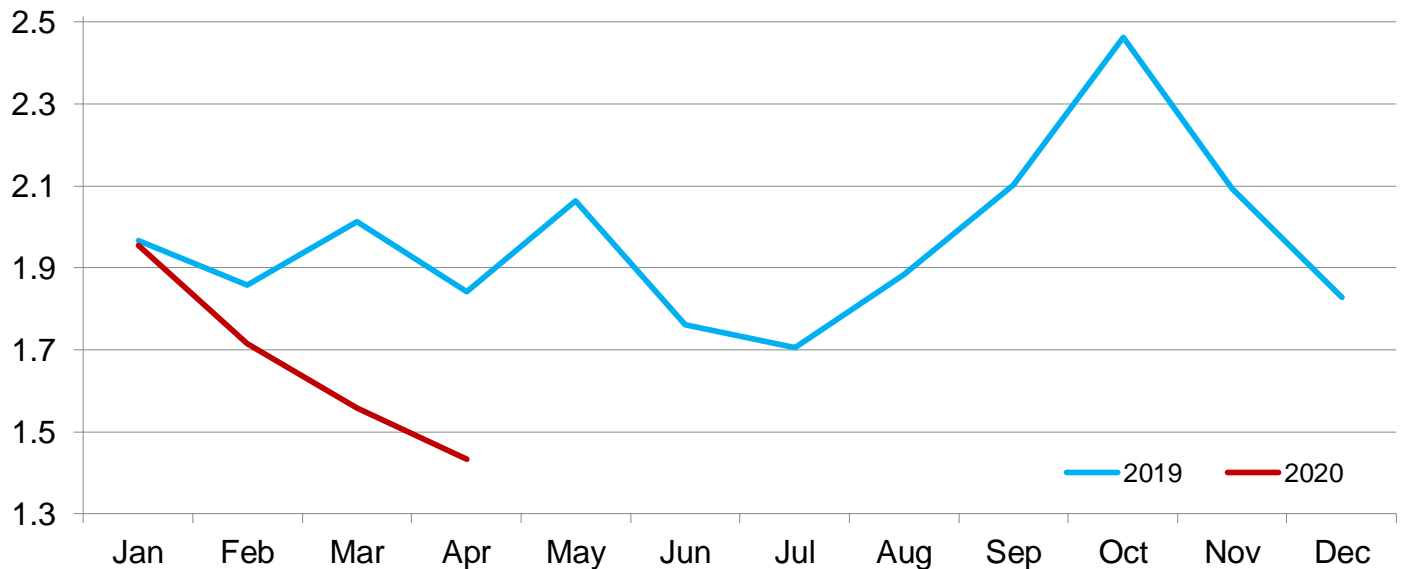


Cattle Placed on Feed on 1,000+ Capacity Feedlots by Month – States and United States: 2019 and 2020

State	During April 2019 (1,000 head)	During March 2020 (1,000 head)	During April 2020		
			Number (1,000 head)	Percent of previous year (percent)	Percent of previous month (percent)
Arizona	25	31	25	100	81
California	63	62	68	108	110
Colorado	170	135	115	68	85
Idaho	31	28	26	84	93
Iowa	85	69	62	73	90
Kansas	435	345	355	82	103
Minnesota	11	12	13	118	108
Nebraska	435	380	310	71	82
Oklahoma	58	40	37	64	93
South Dakota	27	23	23	85	100
Texas	415	350	330	80	94
Washington	40	33	34	85	103
Other States	47	49	34	72	69
United States	1,842	1,557	1,432	78	92

Cattle Placed on 1,000+ Capacity Feedlots – United States

Million head



Cattle Placed on Feed by Weight Group on 1,000+ Capacity Feedlots and Month – States and United States: 2019 and 2020

State	During April 2019							
	Under 600 lbs	600-699 lbs	700-799 lbs	800-899 lbs	900+ lbs ¹	900-999 lbs	1,000+ lbs	Total
	(1,000 head)	(1,000 head)	(1,000 head)	(1,000 head)	(1,000 head)	(1,000 head)	(1,000 head)	(1,000 head)
Colorado	30	30	40	45	25	(D)	(D)	170
Kansas	45	60	125	130	75	(D)	(D)	435
Nebraska	40	50	95	130	120	(D)	(D)	435
Texas	125	70	105	90	25	(D)	(D)	415
Other States	115	40	82	100	50	(D)	(D)	387
United States ..	355	250	447	495	(X)	210	85	1,842
State	During March 2020							
	Under 600 lbs	600-699 lbs	700-799 lbs	800-899 lbs	900+ lbs ¹	900-999 lbs	1,000+ lbs	Total
	(1,000 head)	(1,000 head)	(1,000 head)	(1,000 head)	(1,000 head)	(1,000 head)	(1,000 head)	(1,000 head)
Colorado	25	20	35	35	20	(D)	(D)	135
Kansas	40	50	110	100	45	(D)	(D)	345
Nebraska	25	45	100	120	90	(D)	(D)	380
Texas	115	65	85	65	20	(D)	(D)	350
Other States	105	40	80	82	40	(D)	(D)	347
United States ..	310	220	410	402	(X)	155	60	1,557
State	During April 2020							
	Under 600 lbs	600-699 lbs	700-799 lbs	800-899 lbs	900+ lbs ¹	900-999 lbs	1,000+ lbs	Total
	(1,000 head)	(1,000 head)	(1,000 head)	(1,000 head)	(1,000 head)	(1,000 head)	(1,000 head)	(1,000 head)
Colorado	25	15	25	30	20	(D)	(D)	115
Kansas	35	45	100	115	60	(D)	(D)	355
Nebraska	20	30	65	105	90	(D)	(D)	310
Texas	110	55	65	70	30	(D)	(D)	330
Other States	105	35	60	72	50	(D)	(D)	322
United States ..	295	180	315	392	(X)	180	70	1,432

(D) Withheld to avoid disclosing data for individual operations.

(X) Not applicable.

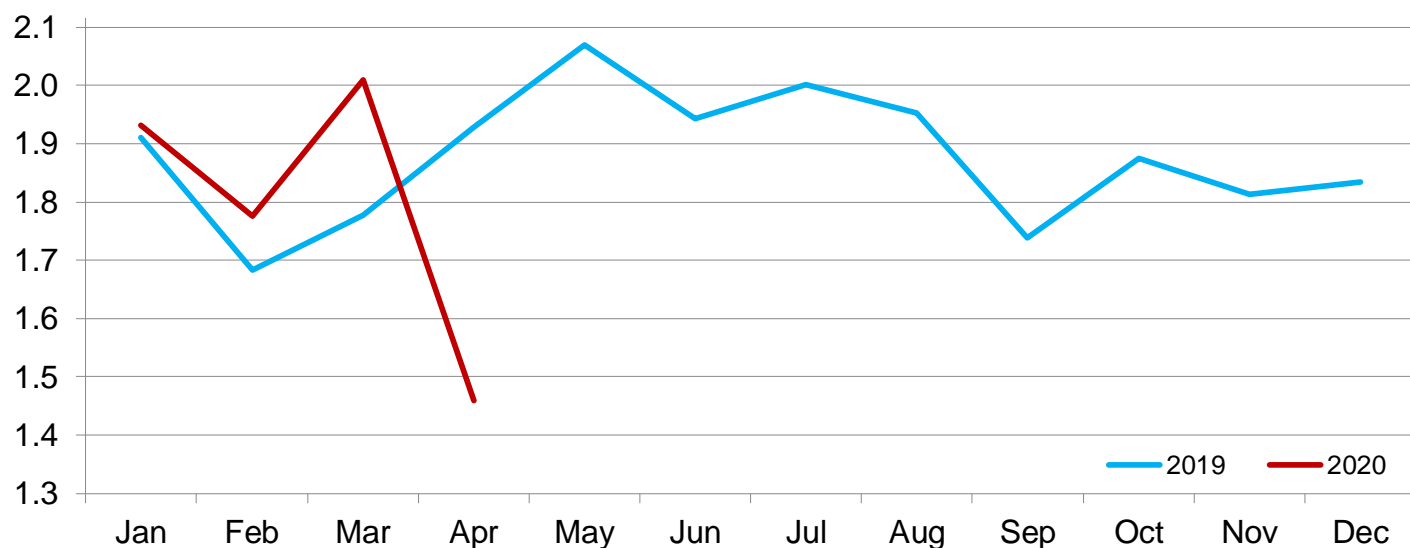
¹ The 900 pounds and greater weight group is the sum of 900-999 pounds and 1,000 pounds and greater weight groups.

Cattle Marketed on 1,000+ Capacity Feedlots by Month – States and United States: 2019 and 2020

State	During April 2019	During March 2020	During April 2020		
			Number	Percent of previous year	Percent of previous month
			(1,000 head)	(percent)	(percent)
Arizona	25	24	21	84	88
California	65	66	62	95	94
Colorado	165	220	120	73	55
Idaho	30	37	30	100	81
Iowa	113	105	68	60	65
Kansas	420	425	310	74	73
Minnesota	20	16	12	60	75
Nebraska	440	475	315	72	66
Oklahoma	67	54	46	69	85
South Dakota	30	44	30	100	68
Texas	465	460	390	84	85
Washington	28	32	23	82	72
Other States	60	52	32	53	62
United States	1,928	2,010	1,459	76	73

Cattle Marketed on 1,000+ Capacity Feedlots – United States

Million head



Cattle Other Disappearance on 1,000+ Capacity Feedlots by Month – States and United States: 2019 and 2020

State	During April 2019 (1,000 head)	During March 2020 (1,000 head)	During April 2020		
			Number (1,000 head)	Percent of previous year (percent)	Percent of previous month (percent)
Arizona	1	1	1	100	100
California	3	6	11	367	183
Colorado	5	5	5	100	100
Idaho	1	1	1	100	100
Iowa	2	4	4	200	100
Kansas	15	10	15	100	150
Minnesota	1	1	1	100	100
Nebraska	15	15	15	100	100
Oklahoma	1	1	1	100	100
South Dakota	2	4	3	150	75
Texas	10	10	10	100	100
Washington	2	1	1	50	100
Other States	2	2	2	100	100
United States	60	61	70	117	115

Terms and Definitions of Cattle on Feed Estimates

Cattle on feed are steers and heifers being fed a ration of grain, silage, hay and/or protein supplement for slaughter market that are expected to produce a carcass that will grade select or better. It excludes cattle being "backgrounded only" for later sale as feeders or later placement in another feedlot.

Placements are steers and heifers put into a feedlot, fed a ration which will produce a carcass that will grade select or better, and are intended for the slaughter market.

Marketings are steers and heifers shipped out of feedlots to a slaughter market.

Other disappearance includes death loss, movement from feedlots to pasture, and shipments to other feedlots for further feeding.

Statistical Methodology

Survey Procedures: During January and July all known feedlots in the United States with capacity of 1,000 or more head are surveyed to provide data for cattle on feed estimates. During the other months, all known feedlots from 16 States are surveyed. The 16 States account for approximately 98 percent of the cattle on feed in feedlots with capacity of 1,000 or more head. Individual State estimates are published monthly for 12 of the 16 States. Data collected from the remaining 4 States are used to establish the "Other States" estimates. These 4 States include Illinois, New Mexico, Oregon, and Wyoming. The "Other States" category represents all cattle on feed with a capacity of 1,000 or more head for the rest of the United States.

Estimating Procedures: These cattle on feed estimates were prepared by the Agricultural Statistics Board after reviewing recommendations and analysis submitted by Regional Field Offices. Regional and State survey data were reviewed for reasonableness with each other and with estimates from the previous month when establishing the current estimates.

Revision Policy: Revisions to previous estimates are made to improve month to month relationships. Estimates for the previous month are subject to revision in all States each month when current estimates are made. In February, all monthly estimates for the previous year, and the number of feedlots and annual marketings from two years ago are reviewed and subject to revisions. The reviews are primarily based on slaughter data, state check-off or brand data, and any other data that may have been received after the original estimate was made. Estimates will also be reviewed after data from the *Census of Agriculture* are available. No revisions will be made after that date and estimates become final.

Reliability: Since all 1,000+ capacity cattle on feed operators in every State are not included in the monthly survey, survey estimates are subject to sampling variability. Survey results are also subject to non-sampling errors such as omissions, duplications, and mistakes in reporting, recording, and processing the data. The effects of these errors cannot be measured directly. They are minimized through rigid quality controls in the data collection process and through a careful review of all reported data for consistency and reasonableness.

To assist users in evaluating the reliability of estimates in this report, the "**Root Mean Square Error**" is shown for selected items in the table on the following page. The "Root Mean Square Error" is a statistical measure based on past performance and is computed using the differences between first and latest estimates. The "Root Mean Square Error" for cattle on feed inventory estimates over the past 24 months is 0.1 percent. This means that chances are 2 out of 3 that the final estimate will not be above or below the current estimate of 11.2 million head by more than 0.1 percent. Chances are 9 out of 10 that the difference will not exceed 0.1 percent.

The table on the following page shows a 24 month record of the range of differences between first and latest estimates for selected items. Using estimates of number on feed as an example, changes between the first estimate and the latest estimate during the past 24 months have averaged 4,000 head, ranging from 0 to 15,000 head. During this period the initial estimate has been above the latest estimate 8 times and has been below the latest estimate 3 times. This does not imply that the initial estimate is likely to understate or overstate final inventory.

Reliability of Monthly Cattle on Feed Estimates

[Based on data for the past 24 months]

Item	Root mean square error	90 percent confidence level	Difference between first and latest estimate				
			Average	Smallest	Largest	Months	
						Below latest	Above latest
	(percent)	(percent)	(1,000)	(1,000)	(1,000)	(number)	(number)
Number on feed	0.1	0.1	4	0	15	3	8
Placements	0.2	0.4	3	0	15	6	3
Marketings	0.0	0.0	0	0	2	0	1

Information Contacts

Listed below are the commodity specialists in the Livestock Branch of the National Agricultural Statistics Service to contact for additional information. E-mail inquiries may be sent to nass@usda.gov.

Travis Averill, Chief, Livestock Branch	(202) 692-0069
Scott Hollis, Head, Livestock Section	(202) 690-2424
Sherry Bertramsen – Livestock Slaughter	(202) 690-8632
Holly Brenize – Sheep and Goats	(202) 720-0585
Heidi Lanouette – Cattle, Cattle on Feed	(202) 720-3040
Mike Miller – Milk Production and Milk Cows	(202) 720-3278
Suzanne Richards – Dairy Products	(202) 720-4448
Seth Riggins – Hogs and Pigs	(202) 720-3106

Access to NASS Reports

For your convenience, you may access NASS reports and products the following ways:

- All reports are available electronically, at no cost, on the NASS web site: www.nass.usda.gov
- Both national and state specific reports are available via a free e-mail subscription. To set-up this free subscription, visit www.nass.usda.gov and click on “National” or “State” in upper right corner above “search” box to create an account and select the reports you would like to receive.
- Cornell’s Mann Library has launched a new website housing NASS’s and other agency’s archived reports. The new website, <https://usda.library.cornell.edu>. All email subscriptions containing reports will be sent from the new website, <https://usda.library.cornell.edu>. To continue receiving the reports via e-mail, you will have to go to the new website, create a new account and re-subscribe to the reports. If you need instructions to set up an account or subscribe, they are located at: <https://usda.library.cornell.edu/help>. You should whitelist notifications@usda-esmis.library.cornell.edu in your email client to avoid the emails going into spam/junk folders.

For more information on NASS surveys and reports, call the NASS Agricultural Statistics Hotline at (800) 727-9540, 7:30 a.m. to 4:00 p.m. ET, or e-mail: nass@usda.gov.

The U.S. Department of Agriculture (USDA) prohibits discrimination against its customers, employees, and applicants for employment on the basis of race, color, national origin, age, disability, sex, gender identity, religion, reprisal, and where applicable, political beliefs, marital status, familial or parental status, sexual orientation, or all or part of an individual's income is derived from any public assistance program, or protected genetic information in employment or in any program or activity conducted or funded by the Department. (Not all prohibited bases will apply to all programs and/or employment activities.)

If you wish to file a Civil Rights program complaint of discrimination, complete the [USDA Program Discrimination Complaint Form](#) (PDF), found online at www.ascr.usda.gov/filing-program-discrimination-complaint-usda-customer, or at any USDA office, or call (866) 632-9992 to request the form. You may also write a letter containing all of the information requested in the form. Send your completed complaint form or letter to us by mail at U.S. Department of Agriculture, Director, Office of Adjudication, 1400 Independence Avenue, S.W., Washington, D.C. 20250-9410, by fax (202) 690-7442 or email at program.intake@usda.gov.