



# Cattle on Feed

ISSN: 1948-9080

---

Released November 22, 2019, by the National Agricultural Statistics Service (NASS), Agricultural Statistics Board, United States Department of Agriculture (USDA).

## United States Cattle on Feed Up 1 Percent

**Cattle and calves on feed** for the slaughter market in the United States for feedlots with capacity of 1,000 or more head totaled 11.8 million head on November 1, 2019. The inventory was 1 percent above November 1, 2018.

**Placements** in feedlots during October totaled 2.48 million head, 10 percent above 2018. Net placements were 2.42 million head. During October, placements of cattle and calves weighing less than 600 pounds were 600,000 head, 600-699 pounds were 540,000 head, 700-799 pounds were 517,000 head, 800-899 pounds were 475,000 head, 900-999 pounds were 230,000 head, and 1,000 pounds and greater were 115,000 head.

**Marketings** of fed cattle during October totaled 1.88 million head, 1 percent below 2018.

**Other disappearance** totaled 59,000 head during October, 14 percent below 2018.

**Cattle on Feed Inventory, Placements, Marketings, and Other Disappearance on 1,000+ Capacity Feedlots – United States: November 1, 2018 and 2019**

Item	Number		Percent of previous year
	2018	2019	
	(1,000 head)	(1,000 head)	(percent)
On feed October 1 .....	11,400	11,288	99
Placed on feed during October .....	2,248	2,477	110
Fed cattle marketed during October .....	1,887	1,875	99
Other disappearance during October .....	69	59	86
On feed November 1 .....	11,692	11,831	101

**Cattle on Feed Inventory, Placements, Marketings, and Other Disappearance on 1,000+ Capacity Feedlots – United States: October 1, 2018 and 2019**

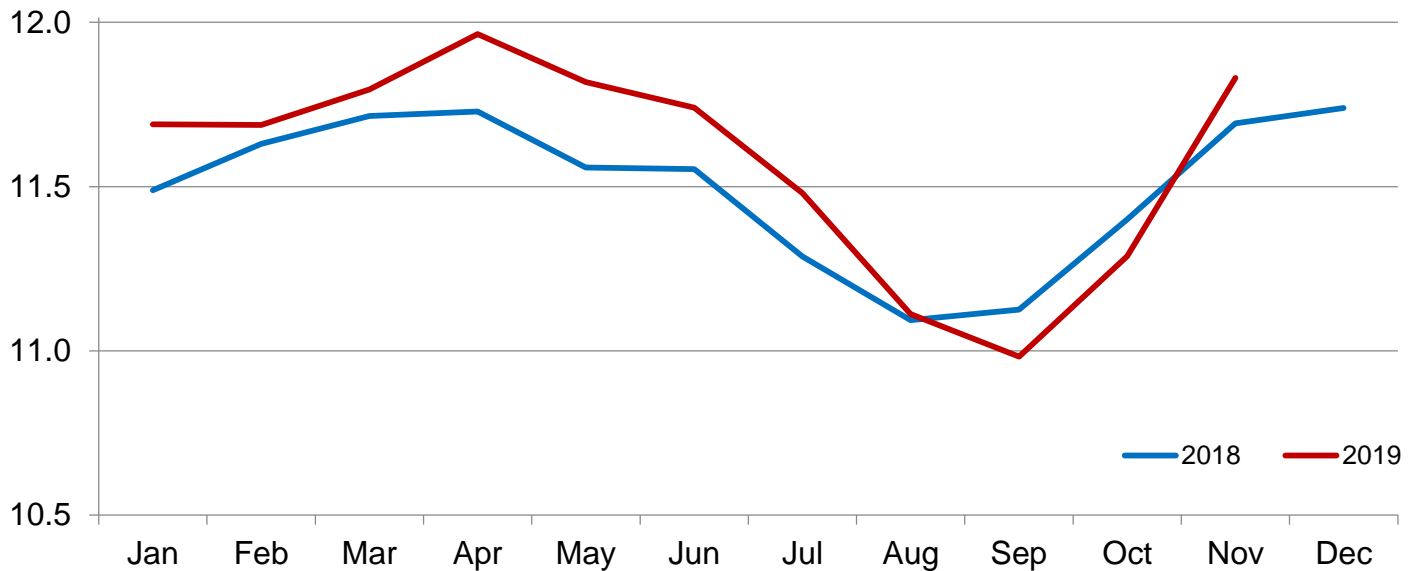
Item	Number		Percent of previous year
	2018	2019	
	(1,000 head)	(1,000 head)	(percent)
On feed September 1 .....	11,125	10,982	99
Placed on feed during September .....	2,051	2,103	103
Fed cattle marketed during September .....	1,719	1,738	101
Other disappearance during September .....	57	59	104
On feed October 1 .....	11,400	11,288	99

**Cattle on Feed Inventory on 1,000+ Capacity Feedlots by Month – States and United States: 2018 and 2019**

State	November 1, 2018	October 1, 2019	November 1, 2019		
			Number	Percent of previous year	Percent of previous month
	(1,000 head)	(1,000 head)	(1,000 head)	(percent)	(percent)
Arizona .....	287	253	256	89	101
California .....	520	525	540	104	103
Colorado .....	1,020	990	1,070	105	108
Idaho .....	270	275	290	107	105
Iowa .....	700	640	660	94	103
Kansas .....	2,360	2,380	2,430	103	102
Minnesota .....	150	105	130	87	124
Nebraska .....	2,590	2,270	2,450	95	108
Oklahoma .....	325	315	325	100	103
South Dakota .....	240	210	245	102	117
Texas .....	2,680	2,790	2,870	107	103
Washington .....	230	225	235	102	104
Other States .....	320	310	330	103	106
United States .....	11,692	11,288	11,831	101	105

**Cattle on Feed Inventory on 1,000+ Capacity Feedlots – United States**

Million head

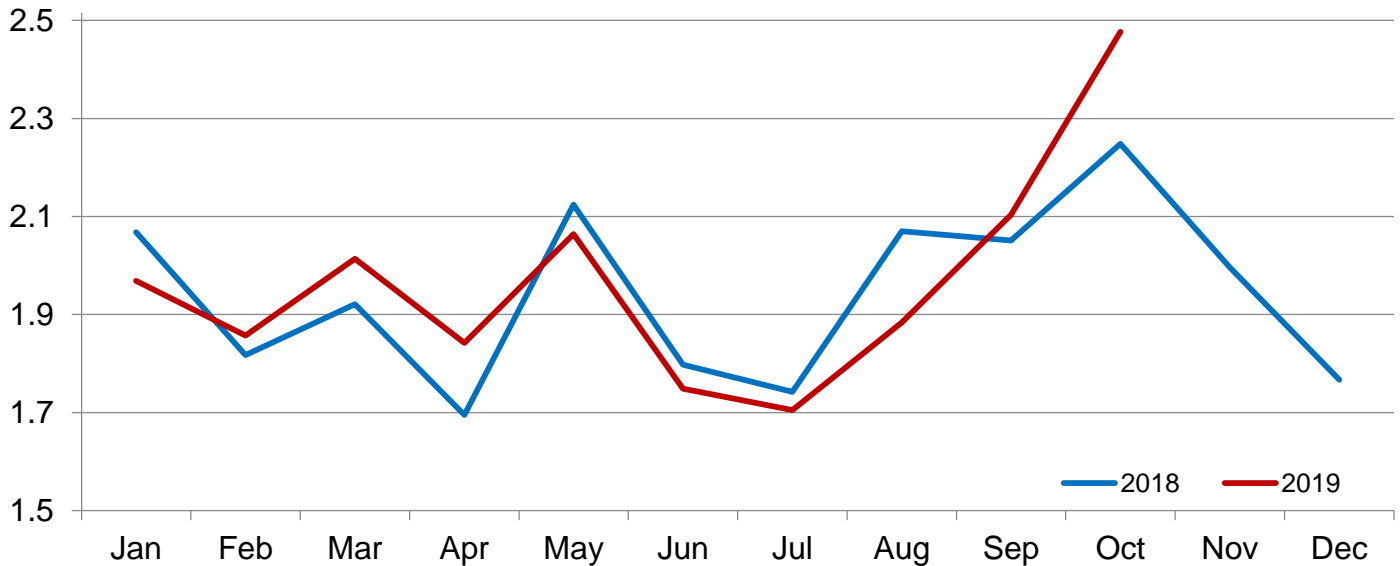


**Cattle Placed on Feed on 1,000+ Capacity Feedlots by Month – States and United States: 2018 and 2019**

State	During October 2018 (1,000 head)	During September 2019 (1,000 head)	During October 2019		
			Number (1,000 head)	Percent of previous year (percent)	Percent of previous month (percent)
Arizona .....	23	16	25	109	156
California .....	61	50	75	123	150
Colorado .....	195	240	240	123	100
Idaho .....	57	58	63	111	109
Iowa .....	107	82	114	107	139
Kansas .....	405	435	460	114	106
Minnesota .....	39	22	39	100	177
Nebraska .....	650	530	670	103	126
Oklahoma .....	54	46	61	113	133
South Dakota .....	74	53	82	111	155
Texas .....	465	465	530	114	114
Washington .....	51	46	51	100	111
Other States .....	67	60	67	100	112
United States .....	2,248	2,103	2,477	110	118

**Cattle Placed on 1,000+ Capacity Feedlots – United States**

Million head



## Cattle Placed on Feed by Weight Group on 1,000+ Capacity Feedlots and Month – States and United States: 2018 and 2019

State	During October 2018							
	Under 600 lbs	600-699 lbs	700-799 lbs	800-899 lbs	900+ lbs <sup>1</sup>	900-999 lbs	1,000+ lbs	Total
	(1,000 head)	(1,000 head)	(1,000 head)	(1,000 head)	(1,000 head)	(1,000 head)	(1,000 head)	(1,000 head)
Colorado .....	55	40	30	40	30	(D)	(D)	195
Kansas .....	70	95	120	80	40	(D)	(D)	405
Nebraska .....	170	140	100	110	130	(D)	(D)	650
Texas .....	160	120	120	50	15	(D)	(D)	465
Other States ...	185	130	80	83	55	(D)	(D)	533
United States ..	640	525	450	363	(X)	180	90	2,248
State	During September 2019							
	Under 600 lbs	600-699 lbs	700-799 lbs	800-899 lbs	900+ lbs <sup>1</sup>	900-999 lbs	1,000+ lbs	Total
	(1,000 head)	(1,000 head)	(1,000 head)	(1,000 head)	(1,000 head)	(1,000 head)	(1,000 head)	(1,000 head)
Colorado .....	30	25	50	70	65	(D)	(D)	240
Kansas .....	60	90	130	100	55	(D)	(D)	435
Nebraska .....	50	60	95	150	175	(D)	(D)	530
Texas .....	170	130	105	50	10	(D)	(D)	465
Other States ...	120	50	80	105	78	(D)	(D)	433
United States ..	430	355	460	475	(X)	273	110	2,103
State	During October 2019							
	Under 600 lbs	600-699 lbs	700-799 lbs	800-899 lbs	900+ lbs <sup>1</sup>	900-999 lbs	1,000+ lbs	Total
	(1,000 head)	(1,000 head)	(1,000 head)	(1,000 head)	(1,000 head)	(1,000 head)	(1,000 head)	(1,000 head)
Colorado .....	50	45	40	55	50	(D)	(D)	240
Kansas .....	65	100	140	105	50	(D)	(D)	460
Nebraska .....	140	130	110	140	150	(D)	(D)	670
Texas .....	170	135	140	65	20	(D)	(D)	530
Other States ...	175	130	87	110	75	(D)	(D)	577
United States ..	600	540	517	475	(X)	230	115	2,477

(D) Withheld to avoid disclosing data for individual operations.

(X) Not applicable.

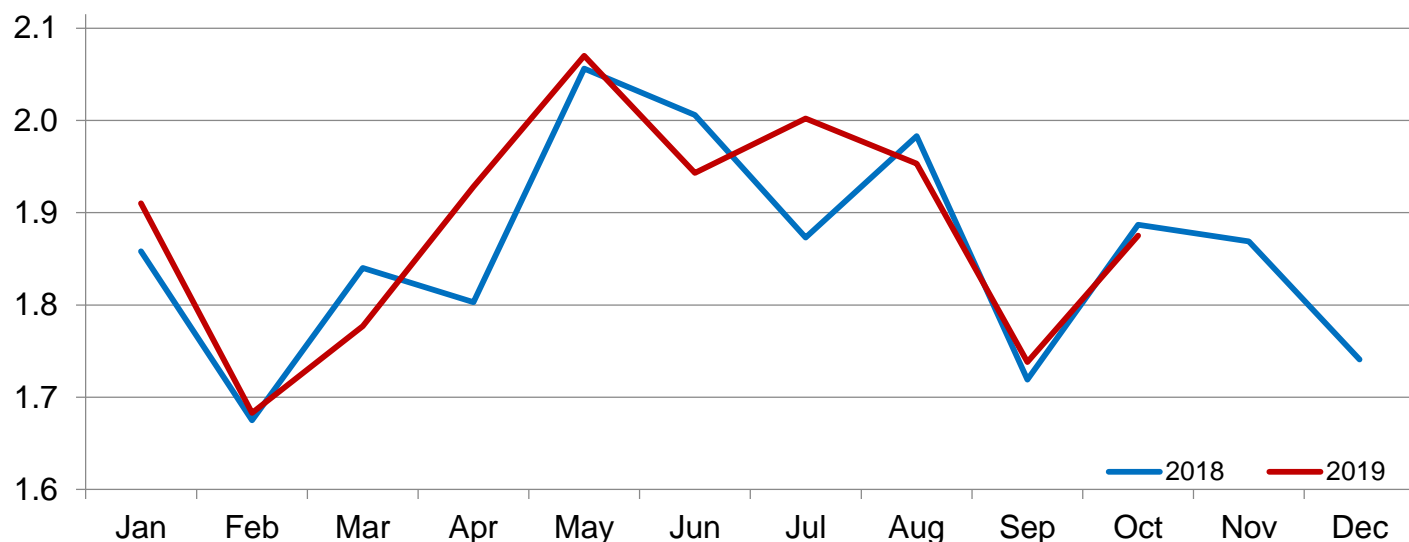
<sup>1</sup> The 900 pounds and greater weight group is the sum of 900-999 pounds and 1,000 pounds and greater weight groups.

## Cattle Marketed on 1,000+ Capacity Feedlots by Month – States and United States: 2018 and 2019

State	During October 2018	During September 2019	During October 2019		
			Number	Percent of previous year	Percent of previous month
			(1,000 head)	(percent)	(percent)
Arizona .....	30	19	21	70	111
California .....	56	50	54	96	108
Colorado .....	150	175	155	103	89
Idaho .....	45	50	45	100	90
Iowa .....	93	70	92	99	131
Kansas .....	395	385	400	101	104
Minnesota .....	18	16	13	72	81
Nebraska .....	480	410	480	100	117
Oklahoma .....	52	44	50	96	114
South Dakota .....	48	46	45	94	98
Texas .....	430	390	435	101	112
Washington .....	40	40	40	100	100
Other States .....	50	43	45	90	105
United States .....	1,887	1,738	1,875	99	108

## Cattle Marketed on 1,000+ Capacity Feedlots – United States

Million head



### Cattle Other Disappearance on 1,000+ Capacity Feedlots by Month – States and United States: 2018 and 2019

State	During October 2018 (1,000 head)	During September 2019 (1,000 head)	During October 2019		
			Number (1,000 head)	Percent of previous year (percent)	Percent of previous month (percent)
Arizona .....	1	1	1	100	100
California .....	5	5	6	120	120
Colorado .....	5	5	5	100	100
Idaho .....	2	3	3	150	100
Iowa .....	4	2	2	50	100
Kansas .....	20	10	10	50	100
Minnesota .....	1	1	1	100	100
Nebraska .....	10	10	10	100	100
Oklahoma .....	2	2	1	50	50
South Dakota .....	1	2	2	200	100
Texas .....	15	15	15	100	100
Washington .....	1	1	1	100	100
Other States .....	2	2	2	100	100
United States .....	69	59	59	86	100

## Terms and Definitions of Cattle on Feed Estimates

**Cattle on feed** are steers and heifers being fed a ration of grain, silage, hay and/or protein supplement for slaughter market that are expected to produce a carcass that will grade select or better. It excludes cattle being "backgrounded only" for later sale as feeders or later placement in another feedlot.

**Placements** are steers and heifers put into a feedlot, fed a ration which will produce a carcass that will grade select or better, and are intended for the slaughter market.

**Marketings** are steers and heifers shipped out of feedlots to a slaughter market.

**Other disappearance** includes death loss, movement from feedlots to pasture, and shipments to other feedlots for further feeding.

## Statistical Methodology

**Survey Procedures:** During January and July all known feedlots in the United States with capacity of 1,000 or more head are surveyed to provide data for cattle on feed estimates. During the other months, all known feedlots from 16 States are surveyed. The 16 States account for approximately 98 percent of the cattle on feed in feedlots with capacity of 1,000 or more head. Individual State estimates are published monthly for 12 of the 16 States. Data collected from the remaining 4 States are used to establish the "Other States" estimates. These 4 States include Illinois, New Mexico, Oregon, and Wyoming. The "Other States" category represents all cattle on feed with a capacity of 1,000 or more head for the rest of the United States.

**Estimating Procedures:** These cattle on feed estimates were prepared by the Agricultural Statistics Board after reviewing recommendations and analysis submitted by Regional Field Offices. Regional and State survey data were reviewed for reasonableness with each other and with estimates from the previous month when establishing the current estimates.

**Revision Policy:** Revisions to previous estimates are made to improve month to month relationships. Estimates for the previous month are subject to revision in all States each month when current estimates are made. In February, all monthly estimates for the previous year, and the number of feedlots and annual marketings from two years ago are reviewed and subject to revisions. The reviews are primarily based on slaughter data, state check-off or brand data, and any other data that may have been received after the original estimate was made. Estimates will also be reviewed after data from the *Census of Agriculture* are available. No revisions will be made after that date and estimates become final.

**Reliability:** Since all 1,000+ capacity cattle on feed operators in every State are not included in the monthly survey, survey estimates are subject to sampling variability. Survey results are also subject to non-sampling errors such as omissions, duplications, and mistakes in reporting, recording, and processing the data. The effects of these errors cannot be measured directly. They are minimized through rigid quality controls in the data collection process and through a careful review of all reported data for consistency and reasonableness.

To assist users in evaluating the reliability of estimates in this report, the "**Root Mean Square Error**" is shown for selected items in the table on the following page. The "Root Mean Square Error" is a statistical measure based on past performance and is computed using the differences between first and latest estimates. The "Root Mean Square Error" for cattle on feed inventory estimates over the past 24 months is 0.0 percent. This means that chances are 2 out of 3 that the final estimate will not be above or below the current estimate of 11.8 million head by more than 0.0 percent. Chances are 9 out of 10 that the difference will not exceed 0.1 percent.

The table on the following page shows a 24 month record of the range of differences between first and latest estimates for selected items. Using estimates of number on feed as an example, changes between the first estimate and the latest estimate during the past 24 months have averaged 1,000 head, ranging from 0 to 10,000 head. During this period the initial estimate has been above the latest estimate 1 times and has been below the latest estimate 3 times. This does not imply that the initial estimate is likely to understate or overstate final inventory.

## Reliability of Monthly Cattle on Feed Estimates

[Based on data for the past 24 months]

Item	Root mean square error	90 percent confidence level	Difference between first and latest estimate				
			Average	Smallest	Largest	Months	
						Below latest	Above latest
	(percent)	(percent)	(1,000)	(1,000)	(1,000)	(number)	(number)
Number on feed .....	0.0	0.1	1	0	10	3	1
Placements .....	0.2	0.3	1	0	10	3	1
Marketings .....	0.0	0.0	0	0	2	0	1

## Information Contacts

Listed below are the commodity specialists in the Livestock Branch of the National Agricultural Statistics Service to contact for additional information. E-mail inquiries may be sent to [nass@usda.gov](mailto:nass@usda.gov).

Travis Averill, Chief, Livestock Branch .....	(202) 692-0069
Scott Hollis, Head, Livestock Section .....	(202) 690-2424
Sherry Bertramsen – Livestock Slaughter .....	(202) 690-8632
Holly Brenize – Sheep and Goats .....	(202) 720-0585
Donnie Fike – Dairy Products .....	(202) 720-4448
Heidi Lanouette – Cattle, Cattle on Feed .....	(202) 720-3040
Mike Miller – Milk Production and Milk Cows .....	(202) 720-3278
Seth Riggins – Hogs and Pigs .....	(202) 720-3106



## Access to NASS Reports

For your convenience, you may access NASS reports and products the following ways:

- All reports are available electronically, at no cost, on the NASS web site: [www.nass.usda.gov](http://www.nass.usda.gov)
- Both national and state specific reports are available via a free e-mail subscription. To set-up this free subscription, visit [www.nass.usda.gov](http://www.nass.usda.gov) and click on “National” or “State” in upper right corner above “search” box to create an account and select the reports you would like to receive.
- Cornell’s Mann Library has launched a new website housing NASS’s and other agency’s archived reports. The new website, <https://usda.library.cornell.edu>. All email subscriptions containing reports will be sent from the new website, <https://usda.library.cornell.edu>. To continue receiving the reports via e-mail, you will have to go to the new website, create a new account and re-subscribe to the reports. If you need instructions to set up an account or subscribe, they are located at: <https://usda.library.cornell.edu/help>. You should whitelist [notifications@usda-esmis.library.cornell.edu](mailto:notifications@usda-esmis.library.cornell.edu) in your email client to avoid the emails going into spam/junk folders.

For more information on NASS surveys and reports, call the NASS Agricultural Statistics Hotline at (800) 727-9540, 7:30 a.m. to 4:00 p.m. ET, or e-mail: [nass@nass.usda.gov](mailto:nass@nass.usda.gov).

The U.S. Department of Agriculture (USDA) prohibits discrimination against its customers, employees, and applicants for employment on the basis of race, color, national origin, age, disability, sex, gender identity, religion, reprisal, and where applicable, political beliefs, marital status, familial or parental status, sexual orientation, or all or part of an individual's income is derived from any public assistance program, or protected genetic information in employment or in any program or activity conducted or funded by the Department. (Not all prohibited bases will apply to all programs and/or employment activities.)

If you wish to file a Civil Rights program complaint of discrimination, complete the [USDA Program Discrimination Complaint Form](#) (PDF), found online at [www.ascr.usda.gov/filing-program-discrimination-complaint-usda-customer](http://www.ascr.usda.gov/filing-program-discrimination-complaint-usda-customer), or at any USDA office, or call (866) 632-9992 to request the form. You may also write a letter containing all of the information requested in the form. Send your completed complaint form or letter to us by mail at U.S. Department of Agriculture, Director, Office of Adjudication, 1400 Independence Avenue, S.W., Washington, D.C. 20250-9410, by fax (202) 690-7442 or email at [program.intake@usda.gov](mailto:program.intake@usda.gov).

# USDA's Agricultural Outlook Forum

## 96th Annual The Innovation Imperative: *Shaping the Future of Agriculture*

February 21-22, 2020 • Crystal Gateway Marriott Hotel, Arlington, Virginia

## Registration is now open for the 2020 Agricultural Outlook Forum

Join us February 20-21, 2020  
Crystal Gateway Marriott Hotel Arlington, Virginia

Register [Here](#)

## The Agricultural Outlook Forum

- USDA's largest annual gathering and the agricultural sector's premiere event
- Brings together more than 1,500 sector leaders and professionals to connect and discuss current and key emerging issues in agriculture
- More than 30 sessions covering commodity markets and outlook, international trade, agricultural policy, as well as cutting edge topics that will influence the future of agriculture



**For More Information**, please contact Forum Coordinator [Mirvat Sewadeh](#) at 202-720-5447