



Cattle on Feed

ISSN: 1948-9080

Released June 22, 2018, by the National Agricultural Statistics Service (NASS), Agricultural Statistics Board, United States Department of Agriculture (USDA).

United States Cattle on Feed Up 4 Percent

Cattle and calves on feed for the slaughter market in the United States for feedlots with capacity of 1,000 or more head totaled 11.6 million head on June 1, 2018. The inventory was 4 percent above June 1, 2017. This is the highest June 1 inventory since the series began in 1996.

Placements in feedlots during May totaled 2.12 million head, slightly above 2017. Net placements were 2.05 million head. During May, placements of cattle and calves weighing less than 600 pounds were 445,000 head, 600-699 pounds were 340,000 head, 700-799 pounds were 480,000 head, 800-899 pounds were 524,000 head, 900-999 pounds were 235,000 head, and 1,000 pounds and greater were 100,000 head.

Marketings of fed cattle during May totaled 2.06 million head, 5 percent above 2017.

Other disappearance totaled 73,000 head during May, 4 percent above 2017.

Cattle on Feed Inventory, Placements, Marketings, and Other Disappearance on 1,000+ Capacity Feedlots – United States: June 1, 2017 and 2018

Item	Number		Percent of previous year
	2017	2018	
	(1,000 head)	(1,000 head)	(percent)
On feed May 1	10,998	11,558	105
Placed on feed during May	2,119	2,124	100
Fed cattle marketed during May	1,951	2,056	105
Other disappearance during May	70	73	104
On feed June 1	11,096	11,553	104

Cattle on Feed Inventory, Placements, Marketings, and Other Disappearance on 1,000+ Capacity Feedlots – United States: May 1, 2017 and 2018

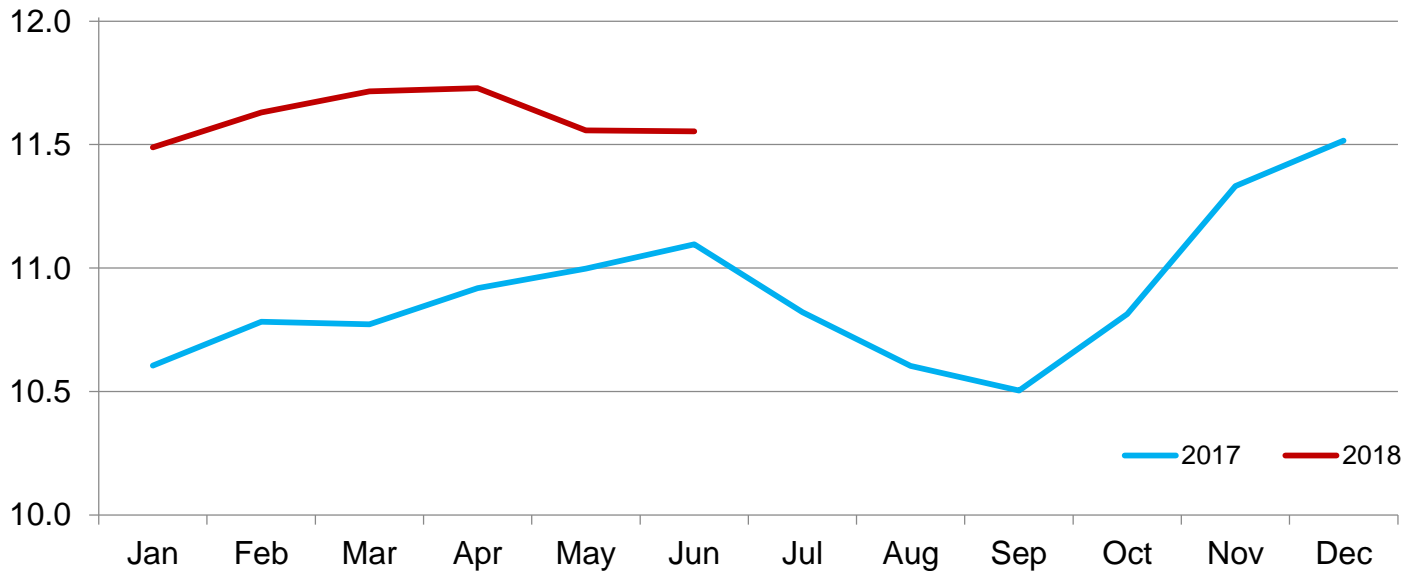
Item	Number		Percent of previous year
	2017	2018	
	(1,000 head)	(1,000 head)	(percent)
On feed April 1	10,919	11,729	107
Placed on feed during April	1,848	1,695	92
Fed cattle marketed during April	1,703	1,803	106
Other disappearance during April	66	63	95
On feed May 1	10,998	11,558	105

Cattle on Feed Inventory on 1,000+ Capacity Feedlots by Month – States and United States: 2017 and 2018

State	June 1, 2017	May 1, 2018	June 1, 2018		
			Number	Percent of previous year	Percent of previous month
	(1,000 head)	(1,000 head)	(1,000 head)	(percent)	(percent)
Arizona	246	298	298	121	100
California	440	500	525	119	105
Colorado	970	940	950	98	101
Idaho	270	255	245	91	96
Iowa	680	730	720	106	99
Kansas	2,270	2,290	2,320	102	101
Minnesota	145	155	145	100	94
Nebraska	2,350	2,660	2,530	108	95
Oklahoma	330	310	315	95	102
South Dakota	240	255	235	98	92
Texas	2,650	2,630	2,730	103	104
Washington	205	210	220	107	105
Other States	300	325	320	107	98
United States	11,096	11,558	11,553	104	100

Cattle on Feed Inventory on 1,000+ Capacity Feedlots – United States

Million head

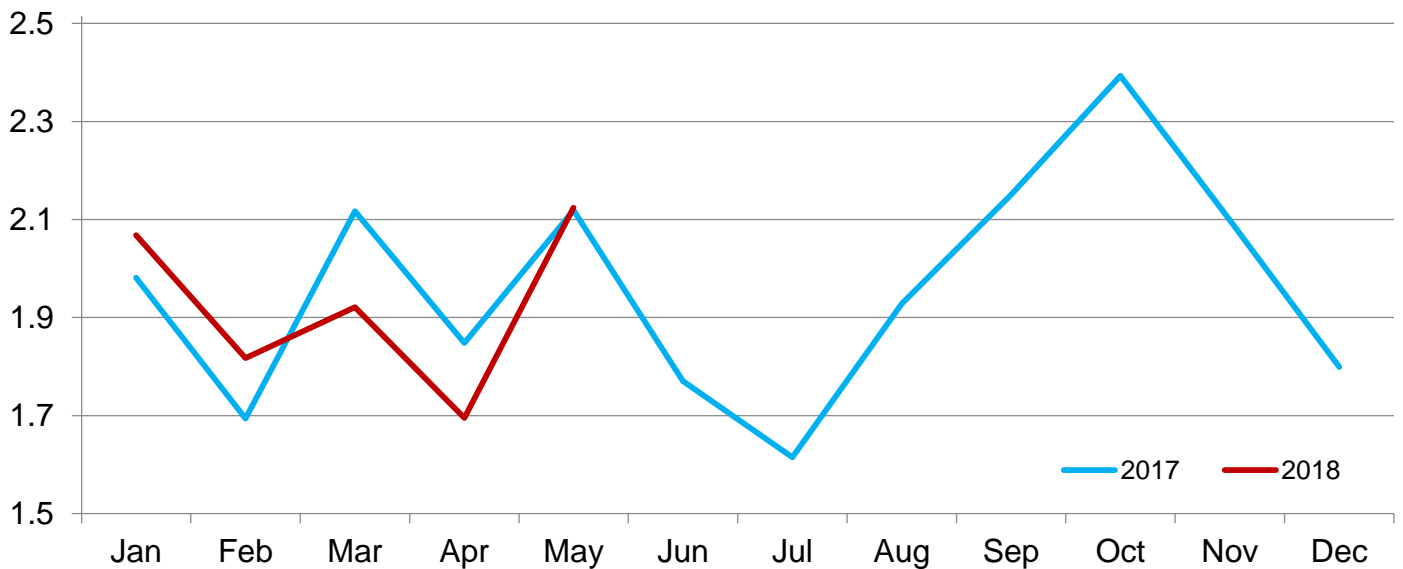


Cattle Placed on Feed on 1,000+ Capacity Feedlots by Month – States and United States: 2017 and 2018

State	During May 2017 (1,000 head)	During April 2018 (1,000 head)	During May 2018		
			Number (1,000 head)	Percent of previous year (percent)	Percent of previous month (percent)
Arizona	26	26	22	85	85
California	71	59	88	124	149
Colorado	160	145	170	106	117
Idaho	39	28	36	92	129
Iowa	85	80	80	94	100
Kansas	440	380	480	109	126
Minnesota	17	12	16	94	133
Nebraska	445	420	465	104	111
Oklahoma	80	60	70	88	117
South Dakota	39	25	29	74	116
Texas	640	385	570	89	148
Washington	41	27	42	102	156
Other States	36	48	56	156	117
United States	2,119	1,695	2,124	100	125

Cattle Placed on 1,000+ Capacity Feedlots – United States

Million head



Cattle Placed on Feed by Weight Group on 1,000+ Capacity Feedlots and Month – States and United States: 2017 and 2018

State	During May 2017							
	Under 600 lbs	600-699 lbs	700-799 lbs	800-899 lbs	900+ lbs ¹	900-999 lbs	1,000+ lbs	Total
	(1,000 head)	(1,000 head)	(1,000 head)	(1,000 head)	(1,000 head)	(1,000 head)	(1,000 head)	(1,000 head)
Colorado	25	20	35	45	35	(D)	(D)	160
Kansas	50	70	135	115	70	(D)	(D)	440
Nebraska	50	50	95	130	120	(D)	(D)	445
Texas	155	125	180	145	35	(D)	(D)	640
Other States ...	120	50	84	115	65	(D)	(D)	434
United States ..	400	315	529	550	(X)	235	90	2,119

State	During April 2018							
	Under 600 lbs	600-699 lbs	700-799 lbs	800-899 lbs	900+ lbs ¹	900-999 lbs	1,000+ lbs	Total
	(1,000 head)	(1,000 head)	(1,000 head)	(1,000 head)	(1,000 head)	(1,000 head)	(1,000 head)	(1,000 head)
Colorado	25	20	35	40	25	(D)	(D)	145
Kansas	40	55	105	110	70	(D)	(D)	380
Nebraska	40	45	95	125	115	(D)	(D)	420
Texas	115	70	100	75	25	(D)	(D)	385
Other States ...	100	40	80	95	50	(D)	(D)	365
United States ..	320	230	415	445	(X)	205	80	1,695

State	During May 2018							
	Under 600 lbs	600-699 lbs	700-799 lbs	800-899 lbs	900+ lbs ¹	900-999 lbs	1,000+ lbs	Total
	(1,000 head)	(1,000 head)	(1,000 head)	(1,000 head)	(1,000 head)	(1,000 head)	(1,000 head)	(1,000 head)
Colorado	25	25	35	45	40	(D)	(D)	170
Kansas	60	85	135	125	75	(D)	(D)	480
Nebraska	45	55	95	140	130	(D)	(D)	465
Texas	185	120	130	105	30	(D)	(D)	570
Other States ...	130	55	85	109	60	(D)	(D)	439
United States ..	445	340	480	524	(X)	235	100	2,124

(D) Withheld to avoid disclosing data for individual operations.

(X) Not applicable.

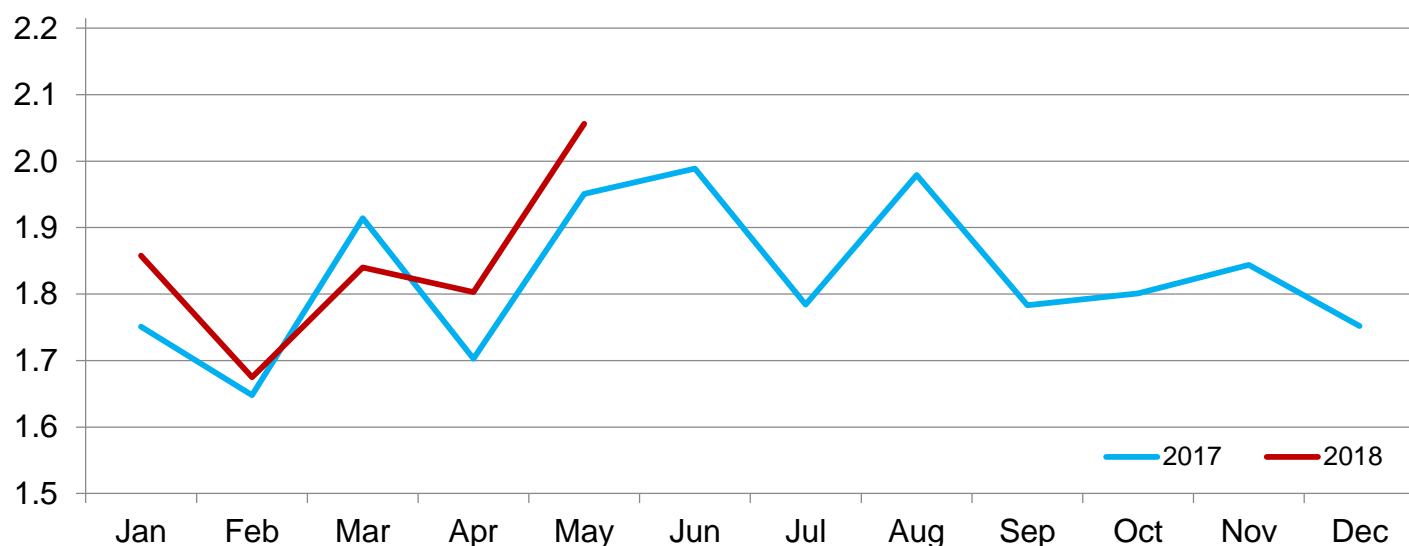
¹ The 900 pounds and greater weight group is the sum of 900-999 pounds and 1,000 pounds and greater weight groups.

Cattle Marketed on 1,000+ Capacity Feedlots by Month – States and United States: 2017 and 2018

State	During May 2017	During April 2018	During May 2018		
			Number	Percent of previous year	Percent of previous month
			(1,000 head)	(percent)	(percent)
Arizona	22	21	21	95	100
California	53	56	60	113	107
Colorado	140	150	150	107	100
Idaho	42	21	45	107	214
Iowa	82	87	87	106	100
Kansas	435	420	440	101	105
Minnesota	26	16	25	96	156
Nebraska	530	430	570	108	133
Oklahoma	58	59	64	110	108
South Dakota	51	27	45	88	167
Texas	440	445	460	105	103
Washington	35	26	31	89	119
Other States	37	45	58	157	129
United States	1,951	1,803	2,056	105	114

Cattle Marketed on 1,000+ Capacity Feedlots – United States

Million head



Cattle Other Disappearance on 1,000+ Capacity Feedlots by Month – States and United States: 2017 and 2018

State	During May 2017 (1,000 head)	During April 2018 (1,000 head)	During May 2018		
			Number (1,000 head)	Percent of previous year (percent)	Percent of previous month (percent)
Arizona	1	1	1	100	100
California	3	3	3	100	100
Colorado	10	5	10	100	200
Idaho	2	2	1	50	50
Iowa	3	3	3	100	100
Kansas	15	10	10	67	100
Minnesota	1	1	1	100	100
Nebraska	15	20	25	167	125
Oklahoma	2	1	1	50	100
South Dakota	3	3	4	133	133
Texas	10	10	10	100	100
Washington	1	1	1	100	100
Other States	4	3	3	75	100
United States	70	63	73	104	116

Terms and Definitions of Cattle on Feed Estimates

Cattle on feed are steers and heifers being fed a ration of grain, silage, hay and/or protein supplement for slaughter market that are expected to produce a carcass that will grade select or better. It excludes cattle being "backgrounded only" for later sale as feeders or later placement in another feedlot.

Placements are steers and heifers put into a feedlot, fed a ration which will produce a carcass that will grade select or better, and are intended for the slaughter market.

Marketings are steers and heifers shipped out of feedlots to a slaughter market.

Other disappearance includes death loss, movement from feedlots to pasture, and shipments to other feedlots for further feeding.

Statistical Methodology

Survey Procedures: During January and July all known feedlots in the United States with capacity of 1,000 or more head are surveyed to provide data for cattle on feed estimates. During the other months, all known feedlots from 16 States are surveyed. The 16 States account for approximately 98 percent of the cattle on feed in feedlots with capacity of 1,000 or more head. Individual State estimates are published monthly for 12 of the 16 States. Data collected from the remaining 4 States are used to establish the "Other States" estimates. These 4 States include Illinois, New Mexico, Oregon, and Wyoming. The "Other States" category represents all cattle on feed with a capacity of 1,000 or more head for the rest of the United States.

Estimating Procedures: These cattle on feed estimates were prepared by the Agricultural Statistics Board after reviewing recommendations and analysis submitted by Regional Field Offices. Regional and State survey data were reviewed for reasonableness with each other and with estimates from the previous month when establishing the current estimates.

Revision Policy: Revisions to previous estimates are made to improve month to month relationships. Estimates for the previous month are subject to revision in all States each month when current estimates are made. In February, all monthly estimates for the previous year, and the number of feedlots and annual marketings from two years ago are reviewed and subject to revisions. The reviews are primarily based on slaughter data, state check-off or brand data, and any other data that may have been received after the original estimate was made. Estimates will also be reviewed after data from the *Census of Agriculture* are available. No revisions will be made after that date and estimates become final.

Reliability: Since all 1,000+ capacity cattle on feed operators in every State are not included in the monthly survey, survey estimates are subject to sampling variability. Survey results are also subject to non-sampling errors such as omissions, duplications, and mistakes in reporting, recording, and processing the data. The effects of these errors cannot be measured directly. They are minimized through rigid quality controls in the data collection process and through a careful review of all reported data for consistency and reasonableness.

To assist users in evaluating the reliability of estimates in this report, the "**Root Mean Square Error**" is shown for selected items in the table on the following page. The "Root Mean Square Error" is a statistical measure based on past performance and is computed using the differences between first and latest estimates. The "Root Mean Square Error" for cattle on feed inventory estimates over the past 24 months is 0.0 percent. This means that chances are 2 out of 3 that the final estimate will not be above or below the current estimate of 11.6 million head by more than 0.0 percent. Chances are 9 out of 10 that the difference will not exceed 0.1 percent.

The table on the following page shows a 24 month record of the range of differences between first and latest estimates for selected items. Using estimates of number on feed as an example, changes between the first estimate and the latest estimate during the past 24 months have averaged 1,000 head, ranging from 0 to 15,000 head. During this period the initial estimate has been above the latest estimate 1 time and has been below the latest estimate 2 times. This does not imply that the initial estimate is likely to understate or overstate final inventory.

Reliability of Monthly Cattle on Feed Estimates

[Based on data for the past 24 months]

Item	Root mean square error	90 percent confidence level	Difference between first and latest estimate				
			Average	Smallest	Largest	Months	
						Below latest	Above latest
	(percent)	(percent)	(1,000)	(1,000)	(1,000)	(number)	(number)
Number on feed	0.0	0.1	1	0	15	2	1
Placements	0.2	0.4	2	0	15	2	2
Marketings	0.1	0.2	0	0	10	0	1

Information Contacts

Listed below are the commodity specialists in the Livestock Branch of the National Agricultural Statistics Service to contact for additional information. E-mail inquiries may be sent to nass@nass.usda.gov.

Travis Averill, Chief, Livestock Branch	(202) 720-3570
Scott Hollis, Head, Livestock Section	(202) 690-2424
Sherry Bertramsen – Livestock Slaughter	(202) 690-8632
Holly Brenize – Sheep and Goats	(202) 720-0585
Donnie Fike – Dairy Products	(202) 690-3236
Heidi Gleich – Cattle, Cattle on Feed	(202) 720-3040
Mike Miller – Milk Production and Milk Cows	(202) 720-3278
Seth Riggins – Hogs and Pigs	(202) 720-3106

Access to NASS Reports

For your convenience, you may access NASS reports and products the following ways:

- All reports are available electronically, at no cost, on the NASS web site: www.nass.usda.gov
- Both national and state specific reports are available via a free e-mail subscription. To set-up this free subscription, visit www.nass.usda.gov and click on “National” or “State” in upper right corner above “search” box to create an account and select the reports you would like to receive.

For more information on NASS surveys and reports, call the NASS Agricultural Statistics Hotline at (800) 727-9540, 7:30 a.m. to 4:00 p.m. ET, or e-mail: nass@nass.usda.gov.

The U.S. Department of Agriculture (USDA) prohibits discrimination against its customers, employees, and applicants for employment on the basis of race, color, national origin, age, disability, sex, gender identity, religion, reprisal, and where applicable, political beliefs, marital status, familial or parental status, sexual orientation, or all or part of an individual's income is derived from any public assistance program, or protected genetic information in employment or in any program or activity conducted or funded by the Department. (Not all prohibited bases will apply to all programs and/or employment activities.)

If you wish to file a Civil Rights program complaint of discrimination, complete the [USDA Program Discrimination Complaint Form](#) (PDF), found online at www.ascr.usda.gov/filing-program-discrimination-complaint-usda-customer, or at any USDA office, or call (866) 632-9992 to request the form. You may also write a letter containing all of the information requested in the form. Send your completed complaint form or letter to us by mail at U.S. Department of Agriculture, Director, Office of Adjudication, 1400 Independence Avenue, S.W., Washington, D.C. 20250-9410, by fax (202) 690-7442 or email at program.intake@usda.gov.