



Cattle on Feed

ISSN: 1948-9080

Released July 24, 2020, by the National Agricultural Statistics Service (NASS), Agricultural Statistics Board, United States Department of Agriculture (USDA).

United States Cattle on Feed Down Slightly

Cattle and calves on feed for the slaughter market in the United States for feedlots with capacity of 1,000 or more head totaled 11.4 million head on July 1, 2020. The inventory was slightly below July 1, 2019. This is the second highest July 1 inventory since the series began in 1996. The inventory included 7.03 million steers and steer calves, up slightly from the previous year. This group accounted for 61 percent of the total inventory. Heifers and heifer calves accounted for 4.41 million head, down 1 percent from 2019.

Placements in feedlots during June totaled 1.80 million head, 2 percent above 2019. Net placements were 1.74 million head. During June, placements of cattle and calves weighing less than 600 pounds were 430,000 head, 600-699 pounds were 310,000 head, 700-799 pounds were 360,000 head, 800-899 pounds were 413,000 head, 900-999 pounds were 200,000 head, and 1,000 pounds and greater were 85,000 head.

Marketings of fed cattle during June totaled 1.97 million head, 1 percent above 2019.

Other disappearance totaled 62,000 head during June, 6 percent below 2019.

United States All Cattle on Feed Unchanged

Cattle and calves on feed for slaughter market in the United States for all feedlots totaled 13.6 million head on July 1, 2020. The inventory was unchanged from the July 1, 2019 total of 13.6 million head. Cattle on feed in feedlots with capacity of 1,000 or more head accounted for 84 percent of the total cattle on feed on July 1, 2020, down slightly from the previous year.

Cattle on Feed Inventory, Placements, Marketings, and Other Disappearance on 1,000+ Capacity Feedlots – United States: July 1, 2019 and 2020

Item	Number		Percent of previous year
	2019	2020	
	(1,000 head)	(1,000 head)	(percent)
On feed June 1	11,728	11,671	100
Placed on feed during June	1,761	1,798	102
Fed cattle marketed during June	1,943	1,969	101
Other disappearance during June	66	62	94
On feed July 1	11,480	11,438	100

Cattle on Feed Inventory, Placements, Marketings, and Other Disappearance on 1,000+ Capacity Feedlots – United States: June 1, 2019 and 2020

Item	Number		Percent of previous year
	2019	2020	
	(1,000 head)	(1,000 head)	(percent)
On feed May 1	11,807	11,200	95
Placed on feed during May	2,063	2,052	99
Fed cattle marketed during May	2,070	1,515	73
Other disappearance during May	72	66	92
On feed June 1	11,728	11,671	100

Cattle on Feed by Class on 1,000+ Capacity Feedlots – United States: July 1, 2019 and 2020

Item	Number		Percent of	
	2019	2020	previous year	inventory
	(1,000 Head)	(1,000 Head)	(percent)	(percent)
Class on feed July 1				
Steers and steer calves	7,010	7,033	100	61
Heifers and heifer calves	4,470	4,405	99	39

All Cattle on Feed – United States: July 1, 2019 and 2020

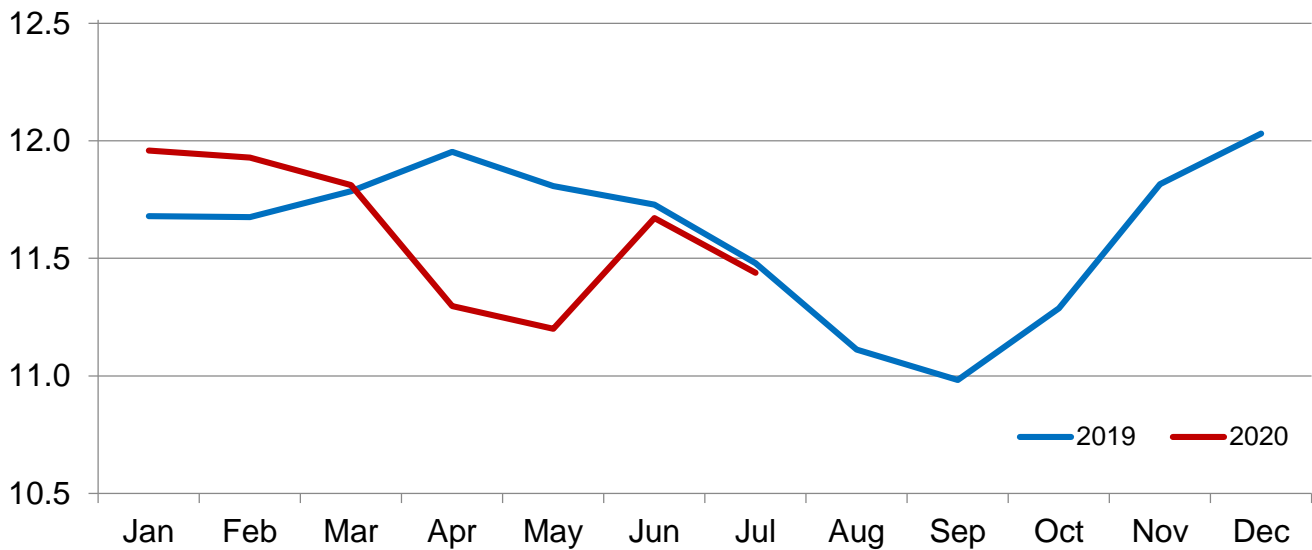
State	Number		Percent of previous year
	2019	2020	
	(1,000 Head)	(1,000 Head)	(percent)
United States	13,600	13,600	100

**Cattle on Feed Inventory on 1,000+ Capacity Feedlots by Month – States and United States:
2019 and 2020**

State	July 1, 2019	June 1, 2020	July 1, 2020		
			Number	Percent of previous year	Percent of previous month
	(1,000 head)	(1,000 head)	(1,000 head)	(percent)	(percent)
Arizona	295	271	273	93	101
California	535	545	545	102	100
Colorado	1,030	1,010	1,020	99	101
Idaho	290	280	280	97	100
Iowa	650	640	630	97	98
Kansas	2,360	2,430	2,390	101	98
Minnesota	125	130	125	100	96
Nebraska	2,300	2,410	2,260	98	94
Oklahoma	320	315	315	98	100
South Dakota	210	200	185	88	93
Texas	2,840	2,930	2,920	103	100
Washington	235	230	225	96	98
Other States	290	280	270	93	96
United States	11,480	11,671	11,438	100	98

**Cattle on Feed Inventory on 1,000+ Capacity
Feedlots – United States**

Million head

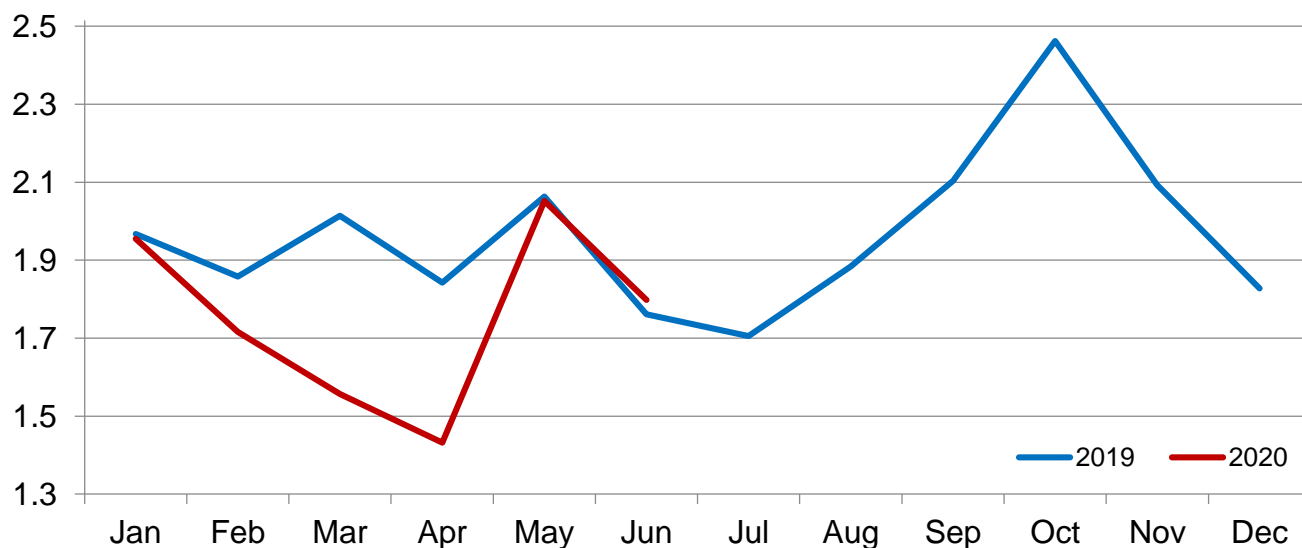


Cattle Placed on Feed on 1,000+ Capacity Feedlots by Month – States and United States: 2019 and 2020

State	During June 2019	During May 2020	During June 2020		
			Number	Percent of previous year	Percent of previous month
	(1,000 head)	(1,000 head)	(1,000 head)	(percent)	(percent)
Arizona	26	23	22	85	96
California	61	76	60	98	79
Colorado	135	215	175	130	81
Idaho	42	36	38	90	106
Iowa	65	75	58	89	77
Kansas	430	495	425	99	86
Minnesota	14	11	14	100	127
Nebraska	415	410	420	101	102
Oklahoma	62	65	55	89	85
South Dakota	31	33	23	74	70
Texas	400	565	440	110	78
Washington	32	16	26	81	163
Other States	48	32	42	88	131
United States	1,761	2,052	1,798	102	88

Number of Cattle Placed on 1,000+ Capacity Feedlots – United States

Million head



Cattle Placed on Feed by Weight Group on 1,000+ Capacity Feedlots and Month – States and United States: 2019 and 2020

State	During June 2019							
	Under 600 lbs	600-699 lbs	700-799 lbs	800-899 lbs	900+ lbs ¹	900-999 lbs	1,000+ lbs	Total
	(1,000 head)	(1,000 head)	(1,000 head)	(1,000 head)	(1,000 head)	(1,000 head)	(1,000 head)	(1,000 head)
Colorado	25	20	30	30	30	(D)	(D)	135
Kansas	60	80	130	105	55	(D)	(D)	430
Nebraska	40	55	80	115	125	(D)	(D)	415
Texas	160	90	80	50	20	(D)	(D)	400
Other States ...	100	50	71	90	70	(D)	(D)	381
United States ..	385	295	391	390	(X)	190	110	1,761

State	During May 2020							
	Under 600 lbs	600-699 lbs	700-799 lbs	800-899 lbs	900+ lbs ¹	900-999 lbs	1,000+ lbs	Total
	(1,000 head)	(1,000 head)	(1,000 head)	(1,000 head)	(1,000 head)	(1,000 head)	(1,000 head)	(1,000 head)
Colorado	35	30	50	60	40	(D)	(D)	215
Kansas	55	70	140	140	90	(D)	(D)	495
Nebraska	30	35	80	145	120	(D)	(D)	410
Texas	150	120	145	110	40	(D)	(D)	565
Other States ...	110	55	70	82	50	(D)	(D)	367
United States ..	380	310	485	537	(X)	235	105	2,052

State	During June 2020							
	Under 600 lbs	600-699 lbs	700-799 lbs	800-899 lbs	900+ lbs ¹	900-999 lbs	1,000+ lbs	Total
	(1,000 head)	(1,000 head)	(1,000 head)	(1,000 head)	(1,000 head)	(1,000 head)	(1,000 head)	(1,000 head)
Colorado	45	35	30	35	30	(D)	(D)	175
Kansas	60	80	110	115	60	(D)	(D)	425
Nebraska	40	55	75	130	120	(D)	(D)	420
Texas	185	90	90	55	20	(D)	(D)	440
Other States ...	100	50	55	78	55	(D)	(D)	338
United States ..	430	310	360	413	(X)	200	85	1,798

(D) Withheld to avoid disclosing data for individual operations.

(X) Not applicable.

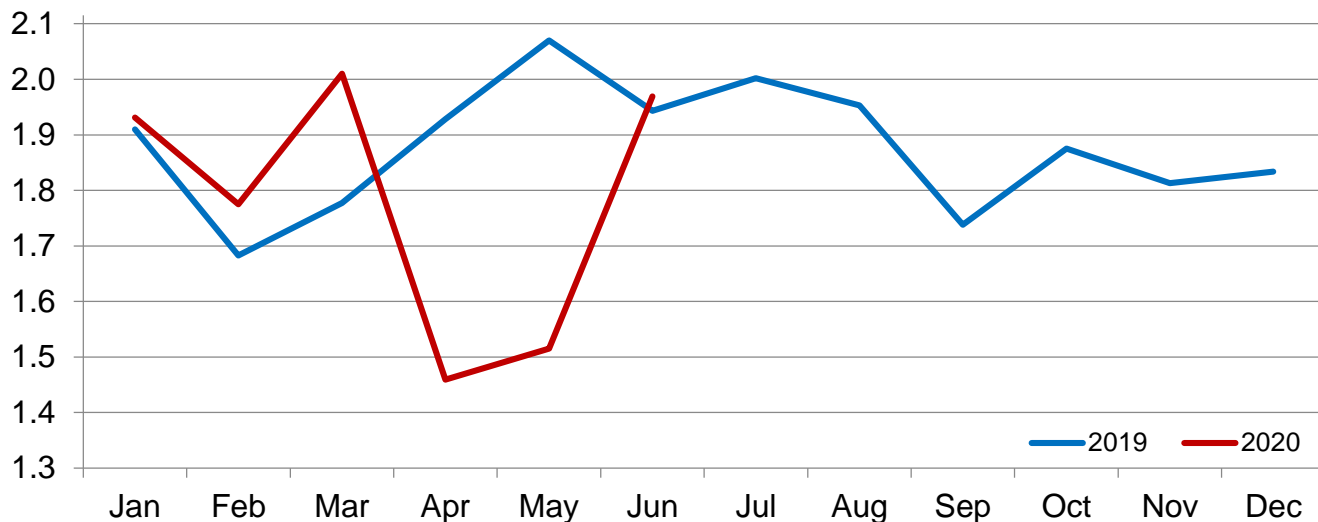
¹ The 900 pounds and greater weight group is the sum of 900-999 pounds and 1,000 pounds and greater weight groups.

Cattle Marketed on 1,000+ Capacity Feedlots by Month – States and United States: 2019 and 2020

State	During June 2019	During May 2020	During June 2020		
			Number	Percent of previous year	Percent of previous month
	(1,000 head)	(1,000 head)	(1,000 head)	(percent)	(percent)
Arizona	28	16	19	68	119
California	57	54	53	93	98
Colorado	160	145	160	100	110
Idaho	36	35	37	103	106
Iowa	72	52	66	92	127
Kansas	440	375	455	103	121
Minnesota	18	10	18	100	180
Nebraska	520	355	555	107	156
Oklahoma	56	44	54	96	123
South Dakota	48	34	32	67	94
Texas	420	315	440	105	140
Washington	36	30	30	83	100
Other States	52	50	50	96	100
United States	1,943	1,515	1,969	101	130

Number of Cattle Marketed on 1,000+ Capacity Feedlots – United States

Million head



Cattle Other Disappearance on 1,000+ Capacity Feedlots by Month – States and United States: 2019 and 2020

State	During June 2019 (1,000 head)	During May 2020 (1,000 head)	During June 2020		
			Number (1,000 head)	Percent of previous year (percent)	Percent of previous month (percent)
Arizona	1	1	1	100	100
California	4	7	7	175	100
Colorado	5	10	5	100	50
Idaho	1	1	1	100	100
Iowa	3	3	2	67	67
Kansas	10	10	10	100	100
Minnesota	1	1	1	100	100
Nebraska	25	15	15	60	100
Oklahoma	1	1	1	100	100
South Dakota	3	4	6	200	150
Texas	10	10	10	100	100
Washington	1	1	1	100	100
Other States	1	2	2	200	100
United States	66	66	62	94	94

**Cattle on Feed by Class on 1,000+ Capacity Feedlots by Quarter – States and United States:
2019 and 2020**

State	Steers and steer calves			Heifers and heifer calves		
	Jul 1, 2019	Apr 1, 2020	Jul 1, 2020	Jul 1, 2019	Apr 1, 2020	Jul 1, 2020
	(1,000 Head)	(1,000 Head)	(1,000 Head)	(1,000 Head)	(1,000 Head)	(1,000 Head)
Arizona	290	257	268	5	5	5
California	460	465	465	75	70	80
Colorado	520	525	560	510	435	460
Idaho	195	190	170	95	95	110
Iowa	480	465	465	170	165	165
Kansas	1,240	1,260	1,280	1,120	1,030	1,110
Minnesota	110	115	105	15	15	20
Nebraska	1,410	1,500	1,380	890	890	880
Oklahoma	155	165	160	165	140	155
South Dakota	130	125	115	80	90	70
Texas	1,700	1,675	1,750	1,140	1,085	1,170
Washington	140	140	135	95	95	90
Other States	180	200	180	110	100	90
United States	7,010	7,082	7,033	4,470	4,215	4,405

Terms and Definitions of Cattle on Feed Estimates

Cattle on feed are steers and heifers being fed a ration of grain, silage, hay and/or protein supplement for slaughter market that are expected to produce a carcass that will grade select or better. It excludes cattle being "backgrounded only" for later sale as feeders or later placement in another feedlot.

Placements are steers and heifers put into a feedlot, fed a ration which will produce a carcass that will grade select or better, and are intended for the slaughter market.

Marketings are steers and heifers shipped out of feedlots to a slaughter market.

Other disappearance includes death loss, movement from feedlots to pasture, and shipments to other feedlots for further feeding.

Statistical Methodology

Survey Procedures: During January and July all known feedlots in the United States with capacity of 1,000 or more head are surveyed to provide data for cattle on feed estimates. During the other months, all known feedlots from 16 States are surveyed. The 16 States account for approximately 98 percent of the cattle on feed in feedlots with capacity of 1,000 or more head. Individual State estimates are published monthly for 12 of the 16 States. Data collected from the remaining 4 States are used to establish the "Other States" estimates. These 4 States include Illinois, New Mexico, Oregon, and Wyoming. The "Other States" category represents all cattle on feed with a capacity of 1,000 or more head for the rest of the United States.

Estimating Procedures: These cattle on feed estimates were prepared by the Agricultural Statistics Board after reviewing recommendations and analysis submitted by Regional Field Offices. Regional and State survey data were reviewed for reasonableness with each other and with estimates from the previous month when establishing the current estimates.

Revision Policy: Revisions to previous estimates are made to improve month to month relationships. Estimates for the previous month are subject to revision in all States each month when current estimates are made. In February, all monthly estimates for the previous year, and the number of feedlots and annual marketings from two years ago are reviewed and subject to revisions. The reviews are primarily based on slaughter data, state check-off or brand data, and any other data that may have been received after the original estimate was made. Estimates will also be reviewed after data from the *Census of Agriculture* are available. No revisions will be made after that date and estimates become final.

Reliability: Since all 1,000+ capacity cattle on feed operators in every State are not included in the monthly survey, survey estimates are subject to sampling variability. Survey results are also subject to non-sampling errors such as omissions, duplications, and mistakes in reporting, recording, and processing the data. The effects of these errors cannot be measured directly. They are minimized through rigid quality controls in the data collection process and through a careful review of all reported data for consistency and reasonableness.

To assist users in evaluating the reliability of estimates in this report, the "**Root Mean Square Error**" is shown for selected items in the table on the following page. The "Root Mean Square Error" is a statistical measure based on past performance and is computed using the differences between first and latest estimates. The "Root Mean Square Error" for cattle on feed inventory estimates over the past 24 months is 0.1 percent. This means that chances are 2 out of 3 that the final estimate will not be above or below the current estimate of 11.4 million head by more than 0.1 percent. Chances are 9 out of 10 that the difference will not exceed 0.1 percent.

The table on the following page shows a 24 month record of the range of differences between first and latest estimates for selected items. Using estimates of number on feed as an example, changes between the first estimate and the latest estimate during the past 24 months have averaged 4,000 head, ranging from 0 to 15,000 head. During this period the initial estimate has been above the latest estimate 8 times and has been below the latest estimate 3 times. This does not imply that the initial estimate is likely to understate or overstate final inventory.

Reliability of Monthly Cattle on Feed Estimates

[Based on data for the past 24 months]

Item	Root mean square error	90 percent confidence level	Difference between first and latest estimate				
			Average	Smallest	Largest	Months	
						Below latest	Above latest
	(percent)	(percent)	(1,000)	(1,000)	(1,000)	(number)	(number)
Number on feed	0.1	0.1	4	0	15	3	8
Placements	0.3	0.5	3	0	15	7	3
Marketings	0.2	0.4	1	0	15	1	1

Information Contacts

Listed below are the commodity specialists in the Livestock Branch of the National Agricultural Statistics Service to contact for additional information. E-mail inquiries may be sent to nass@usda.gov.

Travis Averill, Chief, Livestock Branch (202) 692-0069

Scott Hollis, Head, Livestock Section (202) 690-2424

Sherry Bertramsen – Livestock Slaughter (202) 690-8632

Holly Brenize – Sheep and Goats (202) 720-0585

Ryan Cowen – Cattle, Cattle on Feed (202) 720-3040

Mike Miller – Milk Production and Milk Cows (202) 720-3278

Suzanne Richards – Dairy Products (202) 720-4448

Seth Riggins – Hogs and Pigs (202) 720-3106

Access to NASS Reports

For your convenience, you may access NASS reports and products the following ways:

- All reports are available electronically, at no cost, on the NASS web site: www.nass.usda.gov
- Both national and state specific reports are available via a free e-mail subscription. To set-up this free subscription, visit www.nass.usda.gov and click on “National” or “State” in upper right corner above “search” box to create an account and select the reports you would like to receive.
- Cornell’s Mann Library has launched a new website housing NASS’s and other agency’s archived reports. The new website, <https://usda.library.cornell.edu>. All email subscriptions containing reports will be sent from the new website, <https://usda.library.cornell.edu>. To continue receiving the reports via e-mail, you will have to go to the new website, create a new account and re-subscribe to the reports. If you need instructions to set up an account or subscribe, they are located at: <https://usda.library.cornell.edu/help>. You should whitelist notifications@usda-esmis.library.cornell.edu in your email client to avoid the emails going into spam/junk folders.

For more information on NASS surveys and reports, call the NASS Agricultural Statistics Hotline at (800) 727-9540, 7:30 a.m. to 4:00 p.m. ET, or e-mail: nass@usda.gov.

The U.S. Department of Agriculture (USDA) prohibits discrimination against its customers, employees, and applicants for employment on the basis of race, color, national origin, age, disability, sex, gender identity, religion, reprisal, and where applicable, political beliefs, marital status, familial or parental status, sexual orientation, or all or part of an individual's income is derived from any public assistance program, or protected genetic information in employment or in any program or activity conducted or funded by the Department. (Not all prohibited bases will apply to all programs and/or employment activities.)

If you wish to file a Civil Rights program complaint of discrimination, complete the [USDA Program Discrimination Complaint Form](#) (PDF), found online at www.ascr.usda.gov/filing-program-discrimination-complaint-usda-customer, or at any USDA office, or call (866) 632-9992 to request the form. You may also write a letter containing all of the information requested in the form. Send your completed complaint form or letter to us by mail at U.S. Department of Agriculture, Director, Office of Adjudication, 1400 Independence Avenue, S.W., Washington, D.C. 20250-9410, by fax (202) 690-7442 or email at program.intake@usda.gov.