



Cattle on Feed

ISSN: 1948-9080

Released October 19, 2018, by the National Agricultural Statistics Service (NASS), Agricultural Statistics Board, United States Department of Agriculture (USDA).

Special Note

The December 2018 Cattle on Feed report will be released on December 20, 2018 at 3:00 P.M. EST at www.nass.usda.gov. Please contact the Livestock Branch at (202) 720-3570 or email at hq_sd_lb@nass.usda.gov with any questions or concerns.

United States Cattle on Feed Up 5 Percent

Cattle and calves on feed for the slaughter market in the United States for feedlots with capacity of 1,000 or more head totaled 11.4 million head on October 1, 2018. The inventory was 5 percent above October 1, 2017. This is the highest October 1 inventory since the series began in 1996. The inventory included 7.09 million steers and steer calves, up 2 percent from the previous year. This group accounted for 62 percent of the total inventory. Heifers and heifer calves accounted for 4.31 million head, up 11 percent from 2017.

Placements in feedlots during September totaled 2.05 million head, 5 percent below 2017. Net placements were 1.99 million head. During September, placements of cattle and calves weighing less than 600 pounds were 425,000 head, 600-699 pounds were 330,000 head, 700-799 pounds were 430,000 head, 800-899 pounds were 466,000 head, 900-999 pounds were 280,000 head, and 1,000 pounds and greater were 120,000 head.

Marketings of fed cattle during September totaled 1.72 million head, 4 percent below 2017.

Other disappearance totaled 57,000 head during September, 2 percent below 2017.

Cattle on Feed Inventory, Placements, Marketings, and Other Disappearance on 1,000+ Capacity Feedlots – United States: October 1, 2017 and 2018

Item	Number		Percent of previous year
	2017	2018	
	(1,000 head)	(1,000 head)	(percent)
On feed September 1	10,504	11,125	106
Placed on feed during September	2,150	2,051	95
Fed cattle marketed during September	1,783	1,719	96
Other disappearance during September	58	57	98
On feed October 1	10,813	11,400	105

Cattle on Feed Inventory, Placements, Marketings, and Other Disappearance on 1,000+ Capacity Feedlots – United States: September 1, 2017 and 2018

Item	Number		Percent of previous year
	2017	2018	
	(1,000 head)	(1,000 head)	(percent)
On feed August 1	10,604	11,093	105
Placed on feed during August	1,928	2,070	107
Fed cattle marketed during August	1,979	1,983	100
Other disappearance during August	49	55	112
On feed September 1	10,504	11,125	106

Cattle on Feed by Class on 1,000+ Capacity Feedlots – United States: October 1, 2017 and 2018

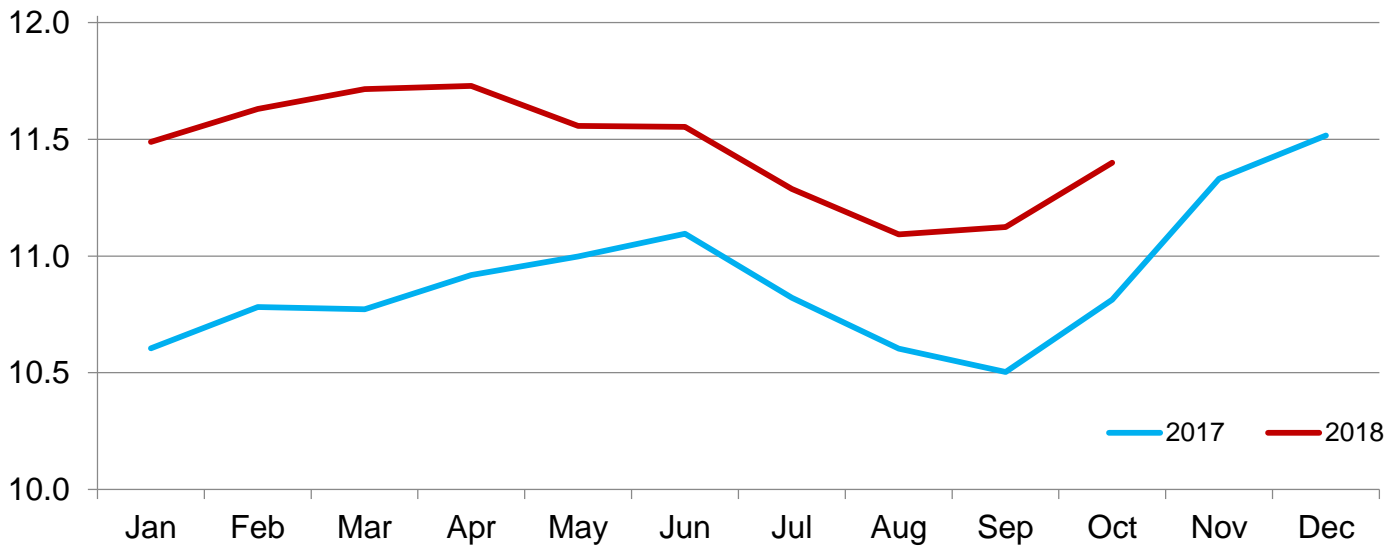
Item	Number		Percent of	
	2017	2018	previous year	inventory
	(1,000 Head)	(1,000 Head)	(percent)	(percent)
Class on feed October 1				
Steers and steer calves	6,934	7,093	102	62
Heifers and heifer calves	3,879	4,307	111	38

Cattle on Feed Inventory on 1,000+ Capacity Feedlots by Month – States and United States: 2017 and 2018

State	October 1, 2017	September 1, 2018	October 1, 2018		
			Number	Percent of previous year	Percent of previous month
	(1,000 head)	(1,000 head)	(1,000 head)	(percent)	(percent)
Arizona	248	295	295	119	100
California	430	525	520	121	99
Colorado	940	900	980	104	109
Idaho	245	255	260	106	102
Iowa	650	680	690	106	101
Kansas	2,250	2,310	2,370	105	103
Minnesota	120	125	130	108	104
Nebraska	2,290	2,330	2,430	106	104
Oklahoma	320	320	325	102	102
South Dakota	220	200	215	98	108
Texas	2,600	2,680	2,660	102	99
Washington	200	210	220	110	105
Other States	300	295	305	102	103
United States	10,813	11,125	11,400	105	102

Cattle on Feed Inventory on 1,000+ Capacity Feedlots – United States

Million head

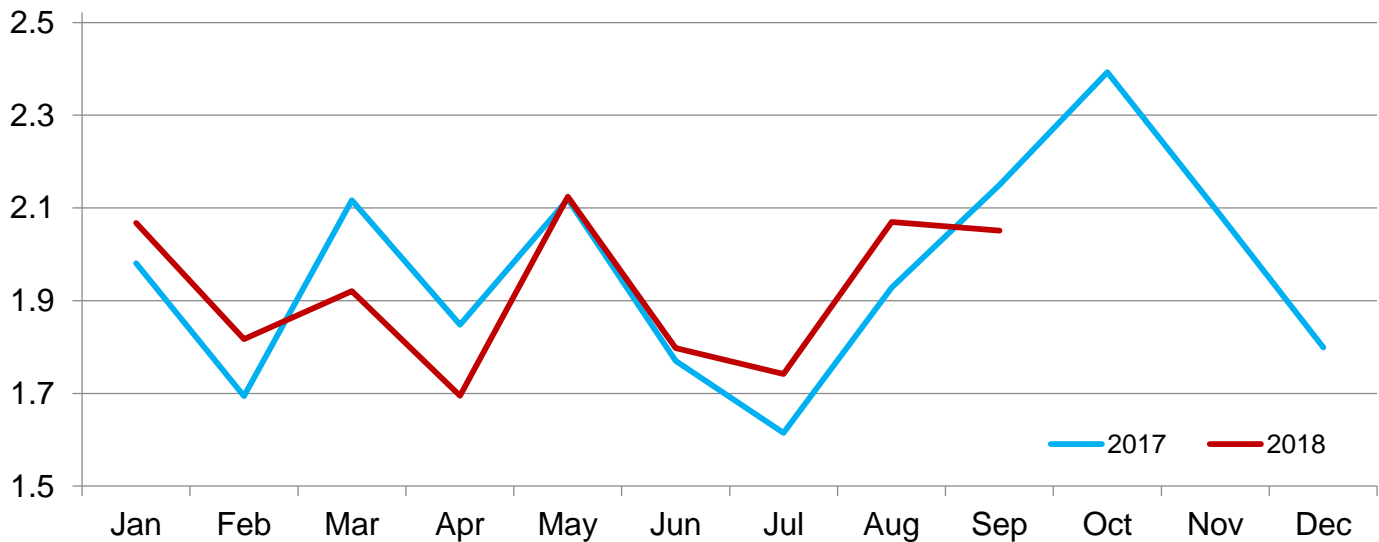


Cattle Placed on Feed on 1,000+ Capacity Feedlots by Month – States and United States: 2017 and 2018

State	During September 2017 (1,000 head)	During August 2018 (1,000 head)	During September 2018		
			Number (1,000 head)	Percent of previous year (percent)	Percent of previous month (percent)
Arizona	20	20	24	120	120
California	56	54	48	86	89
Colorado	250	205	235	94	115
Idaho	55	57	49	89	86
Iowa	106	82	89	84	109
Kansas	435	520	445	102	86
Minnesota	26	23	24	92	104
Nebraska	570	480	520	91	108
Oklahoma	63	65	55	87	85
South Dakota	48	49	59	123	120
Texas	440	415	395	90	95
Washington	34	35	44	129	126
Other States	47	65	64	136	98
United States	2,150	2,070	2,051	95	99

Cattle Placed on 1000+ Capacity Feedlots – United States

Million head



Cattle Placed on Feed by Weight Group on 1,000+ Capacity Feedlots and Month – States and United States: 2017 and 2018

State	During September 2017							
	Under 600 lbs (1,000 head)	600-699 lbs (1,000 head)	700-799 lbs (1,000 head)	800-899 lbs (1,000 head)	900+ lbs ¹ (1,000 head)	900-999 lbs (1,000 head)	1,000+ lbs (1,000 head)	Total (1,000 head)
Colorado	30	25	50	75	70	(D)	(D)	250
Kansas	60	90	130	105	50	(D)	(D)	435
Nebraska	55	60	110	160	185	(D)	(D)	570
Texas	140	110	120	60	10	(D)	(D)	440
Other States ...	120	55	80	115	85	(D)	(D)	455
United States ..	405	340	490	515	(X)	285	115	2,150
State	During August 2018							
	Under 600 lbs (1,000 head)	600-699 lbs (1,000 head)	700-799 lbs (1,000 head)	800-899 lbs (1,000 head)	900+ lbs ¹ (1,000 head)	900-999 lbs (1,000 head)	1,000+ lbs (1,000 head)	Total (1,000 head)
Colorado	35	25	40	50	55	(D)	(D)	205
Kansas	70	115	150	120	65	(D)	(D)	520
Nebraska	50	45	90	145	150	(D)	(D)	480
Texas	165	100	90	50	10	(D)	(D)	415
Other States ...	110	50	90	110	90	(D)	(D)	450
United States ..	430	335	460	475	(X)	240	130	2,070
State	During September 2018							
	Under 600 lbs (1,000 head)	600-699 lbs (1,000 head)	700-799 lbs (1,000 head)	800-899 lbs (1,000 head)	900+ lbs ¹ (1,000 head)	900-999 lbs (1,000 head)	1,000+ lbs (1,000 head)	Total (1,000 head)
Colorado	30	25	45	70	65	(D)	(D)	235
Kansas	65	90	130	100	60	(D)	(D)	445
Nebraska	55	55	85	140	185	(D)	(D)	520
Texas	145	105	90	45	10	(D)	(D)	395
Other States ...	130	55	80	111	80	(D)	(D)	456
United States ..	425	330	430	466	(X)	280	120	2,051

(D) Withheld to avoid disclosing data for individual operations.

(X) Not applicable.

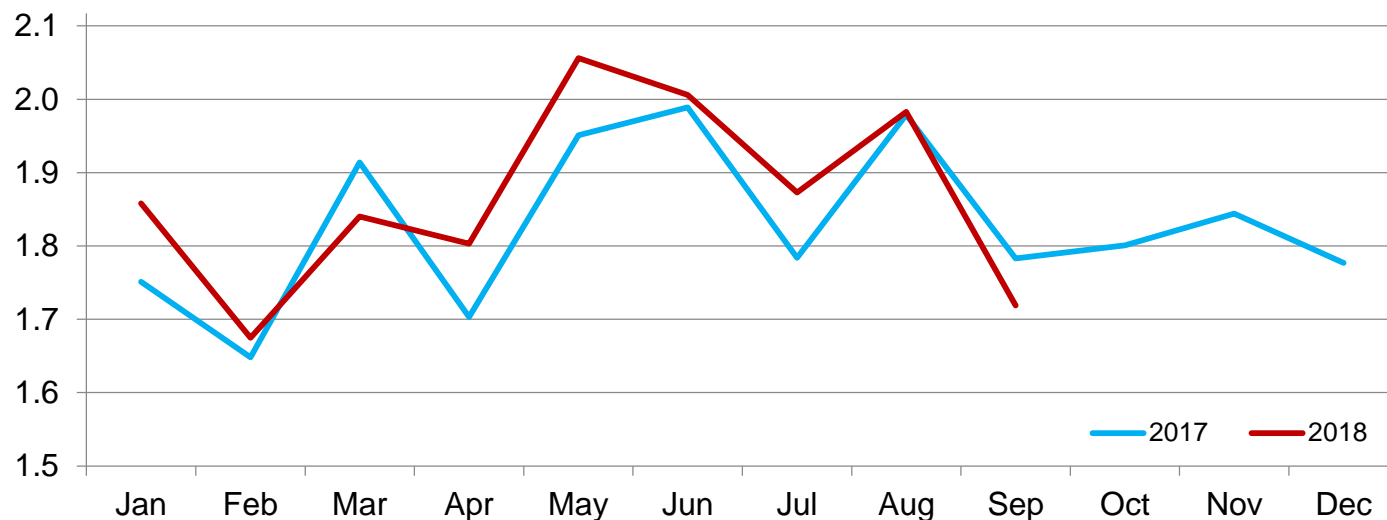
¹ The 900 pounds and greater weight group is the sum of 900-999 pounds and 1,000 pounds and greater weight groups.

Cattle Marketed on 1,000+ Capacity Feedlots by Month – States and United States: 2017 and 2018

State	During September 2017 (1,000 head)	During August 2018 (1,000 head)	During September 2018		
			Number (1,000 head)	Percent of previous year (percent)	Percent of previous month (percent)
			Arizona	15	22
California	44	50	49	111	98
Colorado	165	190	150	91	79
Idaho	48	46	39	81	85
Iowa	95	100	75	79	75
Kansas	390	430	375	96	87
Minnesota	25	27	18	72	67
Nebraska	420	470	410	98	87
Oklahoma	56	59	48	86	81
South Dakota	42	48	42	100	88
Texas	415	440	405	98	92
Washington	33	44	33	100	75
Other States	35	57	52	149	91
United States	1,783	1,983	1,719	96	87

Cattle Marketed on 1,000+ Capacity Feedlots – United States

Million head



Cattle Other Disappearance on 1,000+ Capacity Feedlots by Month – States and United States: 2017 and 2018

State	During September 2017 (1,000 head)	During August 2018 (1,000 head)	During September 2018		
			Number (1,000 head)	Percent of previous year (percent)	Percent of previous month (percent)
Arizona	1	1	1	100	100
California	2	4	4	200	100
Colorado	5	5	5	100	100
Idaho	2	1	5	250	500
Iowa	1	2	4	400	200
Kansas	15	10	10	67	100
Minnesota	1	1	1	100	100
Nebraska	10	10	10	100	100
Oklahoma	2	1	2	100	200
South Dakota	1	1	2	200	200
Texas	15	15	10	67	67
Washington	1	1	1	100	100
Other States	2	3	2	100	67
United States	58	55	57	98	104

**Cattle on Feed by Class on 1,000+ Capacity Feedlots by Quarter – States and United States:
2017 and 2018**

State	Steers and steer calves			Heifers and heifer calves		
	Oct 1, 2017	Jul 1, 2018	Oct 1, 2018	Oct 1, 2017	Jul 1, 2018	Oct 1, 2018
	(1,000 Head)	(1,000 Head)	(1,000 Head)	(1,000 Head)	(1,000 Head)	(1,000 Head)
Arizona	241	290	288	7	7	7
California	400	470	465	30	60	55
Colorado	560	520	550	380	410	430
Idaho	165	170	175	80	70	85
Iowa	480	520	500	170	190	190
Kansas	1,160	1,150	1,220	1,090	1,090	1,150
Minnesota	98	108	105	22	27	25
Nebraska	1,490	1,580	1,510	800	820	920
Oklahoma	185	180	185	135	135	140
South Dakota	135	130	115	85	85	100
Texas	1,700	1,680	1,650	900	1,060	1,010
Washington	130	145	140	70	85	80
Other States	190	190	190	110	115	115
United States	6,934	7,133	7,093	3,879	4,154	4,307

Terms and Definitions of Cattle on Feed Estimates

Cattle on feed are steers and heifers being fed a ration of grain, silage, hay and/or protein supplement for slaughter market that are expected to produce a carcass that will grade select or better. It excludes cattle being "backgrounded only" for later sale as feeders or later placement in another feedlot.

Placements are steers and heifers put into a feedlot, fed a ration which will produce a carcass that will grade select or better, and are intended for the slaughter market.

Marketings are steers and heifers shipped out of feedlots to a slaughter market.

Other disappearance includes death loss, movement from feedlots to pasture, and shipments to other feedlots for further feeding.

Statistical Methodology

Survey Procedures: During January and July all known feedlots in the United States with capacity of 1,000 or more head are surveyed to provide data for cattle on feed estimates. During the other months, all known feedlots from 16 States are surveyed. The 16 States account for approximately 98 percent of the cattle on feed in feedlots with capacity of 1,000 or more head. Individual State estimates are published monthly for 12 of the 16 States. Data collected from the remaining 4 States are used to establish the "Other States" estimates. These 4 States include Illinois, New Mexico, Oregon, and Wyoming. The "Other States" category represents all cattle on feed with a capacity of 1,000 or more head for the rest of the United States.

Estimating Procedures: These cattle on feed estimates were prepared by the Agricultural Statistics Board after reviewing recommendations and analysis submitted by Regional Field Offices. Regional and State survey data were reviewed for reasonableness with each other and with estimates from the previous month when establishing the current estimates.

Revision Policy: Revisions to previous estimates are made to improve month to month relationships. Estimates for the previous month are subject to revision in all States each month when current estimates are made. In February, all monthly estimates for the previous year, and the number of feedlots and annual marketings from two years ago are reviewed and subject to revisions. The reviews are primarily based on slaughter data, state check-off or brand data, and any other data that may have been received after the original estimate was made. Estimates will also be reviewed after data from the *Census of Agriculture* are available. No revisions will be made after that date and estimates become final.

Reliability: Since all 1,000+ capacity cattle on feed operators in every State are not included in the monthly survey, survey estimates are subject to sampling variability. Survey results are also subject to non-sampling errors such as omissions, duplications, and mistakes in reporting, recording, and processing the data. The effects of these errors cannot be measured directly. They are minimized through rigid quality controls in the data collection process and through a careful review of all reported data for consistency and reasonableness.

To assist users in evaluating the reliability of estimates in this report, the "**Root Mean Square Error**" is shown for selected items in the table on the following page. The "Root Mean Square Error" is a statistical measure based on past performance and is computed using the differences between first and latest estimates. The "Root Mean Square Error" for cattle on feed inventory estimates over the past 24 months is 0.0 percent. This means that chances are 2 out of 3 that the final estimate will not be above or below the current estimate of 11.4 million head by more than 0.0 percent. Chances are 9 out of 10 that the difference will not exceed 0.1 percent.

The table on the following page shows a 24 month record of the range of differences between first and latest estimates for selected items. Using estimates of number on feed as an example, changes between the first estimate and the latest estimate during the past 24 months have averaged 1,000 head, ranging from 0 to 15,000 head. During this period the initial estimate has been above the latest estimate 1 time and has been below the latest estimate 2 times. This does not imply that the initial estimate is likely to understate or overstate final inventory.

Reliability of Monthly Cattle on Feed Estimates

[Based on data for the past 24 months]

Item	Root mean square error	90 percent confidence level	Difference between first and latest estimate				
			Average	Smallest	Largest	Months	
						Below latest	Above latest
	(percent)	(percent)	(1,000)	(1,000)	(1,000)	(number)	(number)
Number on feed	0.0	0.1	1	0	15	2	1
Placements	0.2	0.4	2	0	15	2	2
Marketings	0.1	0.2	0	0	10	0	1

Information Contacts

Listed below are the commodity specialists in the Livestock Branch of the National Agricultural Statistics Service to contact for additional information. E-mail inquiries may be sent to nass@nass.usda.gov.

Travis Averill, Chief, Livestock Branch	(202) 720-3570
Scott Hollis, Head, Livestock Section	(202) 690-2424
Sherry Bertramsen – Livestock Slaughter	(202) 690-8632
Holly Brenize – Sheep and Goats	(202) 720-0585
Donnie Fike – Dairy Products	(202) 720-4448
Heidi Gleich – Cattle, Cattle on Feed	(202) 720-3040
Mike Miller – Milk Production and Milk Cows	(202) 720-3278
Seth Riggins – Hogs and Pigs	(202) 720-3106

Access to NASS Reports

For your convenience, you may access NASS reports and products the following ways:

- All reports are available electronically, at no cost, on the NASS web site: www.nass.usda.gov
- Both national and state specific reports are available via a free e-mail subscription. To set-up this free subscription, visit www.nass.usda.gov and click on “National” or “State” in upper right corner above “search” box to create an account and select the reports you would like to receive.

For more information on NASS surveys and reports, call the NASS Agricultural Statistics Hotline at (800) 727-9540, 7:30 a.m. to 4:00 p.m. ET, or e-mail: nass@nass.usda.gov.

The U.S. Department of Agriculture (USDA) prohibits discrimination against its customers, employees, and applicants for employment on the basis of race, color, national origin, age, disability, sex, gender identity, religion, reprisal, and where applicable, political beliefs, marital status, familial or parental status, sexual orientation, or all or part of an individual's income is derived from any public assistance program, or protected genetic information in employment or in any program or activity conducted or funded by the Department. (Not all prohibited bases will apply to all programs and/or employment activities.)

If you wish to file a Civil Rights program complaint of discrimination, complete the [USDA Program Discrimination Complaint Form](#) (PDF), found online at www.ascr.usda.gov/filing-program-discrimination-complaint-usda-customer, or at any USDA office, or call (866) 632-9992 to request the form. You may also write a letter containing all of the information requested in the form. Send your completed complaint form or letter to us by mail at U.S. Department of Agriculture, Director, Office of Adjudication, 1400 Independence Avenue, S.W., Washington, D.C. 20250-9410, by fax (202) 690-7442 or email at program.intake@usda.gov.