



Released July 20, 2018, by the National Agricultural Statistics Service (NASS), Agricultural Statistics Board, United States Department of Agriculture (USDA).

United States Cattle on Feed Up 4 Percent

Cattle and calves on feed for the slaughter market in the United States for feedlots with capacity of 1,000 or more head totaled 11.3 million head on July 1, 2018. The inventory was 4 percent above July 1, 2017. This is the highest July 1 inventory since the series began in 1996. The inventory included 7.13 million steers and steer calves, up 2 percent from the previous year. This group accounted for 63 percent of the total inventory. Heifers and heifer calves accounted for 4.15 million head, up 8 percent from 2017.

Placements in feedlots during June totaled 1.79 million head, 1 percent above 2017. Net placements were 1.74 million head. During June, placements of cattle and calves weighing less than 600 pounds were 400,000 head, 600-699 pounds were 345,000 head, 700-799 pounds were 385,000 head, 800-899 pounds were 378,000 head, 900-999 pounds were 185,000 head, and 1,000 pounds and greater were 100,000 head.

Marketings of fed cattle during June totaled 2.01 million head, 1 percent above 2017.

Other disappearance totaled 58,000 head during June, 4 percent above 2017.

United States All Cattle on Feed Up 4 Percent

Cattle and calves on feed for slaughter market in the United States for all feedlots totaled 13.3 million head on July 1, 2018. The inventory was up 4 percent from the July 1, 2017 total of 12.8 million head. Cattle on feed in feedlots with capacity of 1,000 or more head accounted for 84.8 percent of the total cattle on feed on July 1, 2018, up slightly from the previous year.

Cattle on Feed Inventory, Placements, Marketings, and Other Disappearance on 1,000+ Capacity Feedlots – United States: July 1, 2017 and 2018

Item	Number		Percent of previous year
	2017	2018	
	(1,000 head)	(1,000 head)	(percent)
On feed June 1	11,096	11,553	104
Placed on feed during June	1,770	1,793	101
Fed cattle marketed during June	1,989	2,006	101
Other disappearance during June	56	58	104
On feed July 1	10,821	11,282	104

Cattle on Feed Inventory, Placements, Marketings, and Other Disappearance on 1,000+ Capacity Feedlots – United States: June 1, 2017 and 2018

Item	Number		Percent of previous year
	2017	2018	
	(1,000 head)	(1,000 head)	(percent)
On feed May 1	10,998	11,558	105
Placed on feed during May	2,119	2,124	100
Fed cattle marketed during May	1,951	2,056	105
Other disappearance during May	70	73	104
On feed June 1	11,096	11,553	104

Cattle on Feed by Class on 1,000+ Capacity Feedlots – United States: July 1, 2017 and 2018

Item	Number		Percent of	
	2017	2018	previous year	inventory
	(1,000 Head)	(1,000 Head)	(percent)	(percent)
Class on feed July 1				
Steers and steer calves	6,964	7,128	102	63
Heifers and heifer calves	3,857	4,154	108	37

All Cattle on Feed – United States: July 1, 2017 and 2018

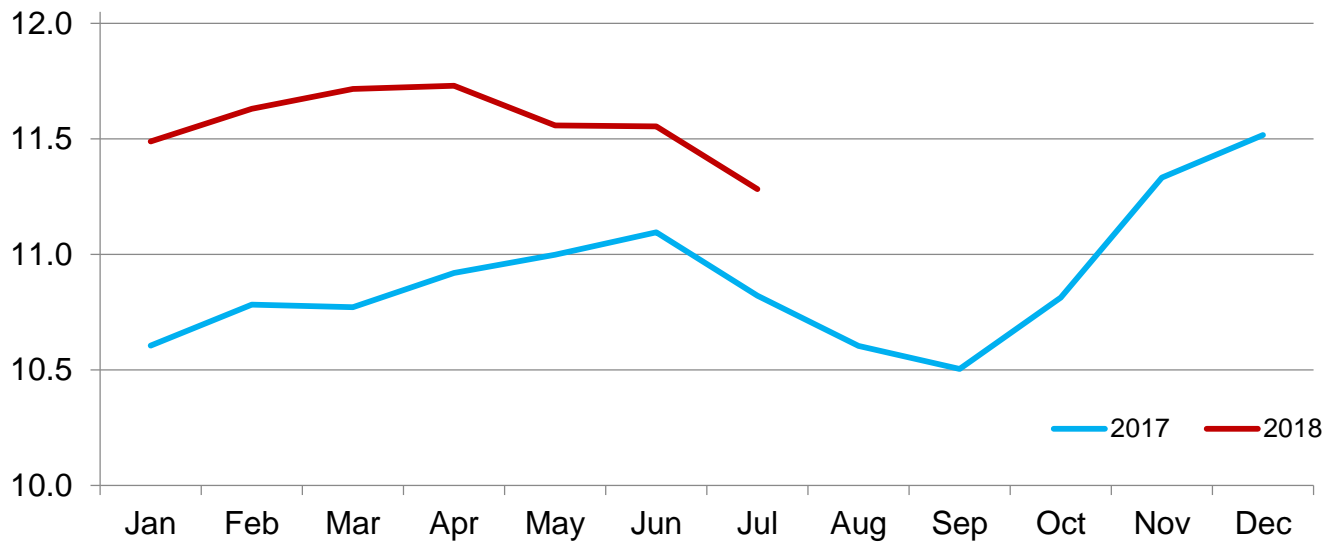
State	Number		Percent of previous year
	2017	2018	
	(1,000 Head)	(1,000 Head)	(percent)
United States	12,800	13,300	104

Cattle on Feed Inventory on 1,000+ Capacity Feedlots by Month – States and United States: 2017 and 2018

State	July 1, 2017	June 1, 2018	July 1, 2018		
			Number	Percent of previous year	Percent of previous month
	(1,000 head)	(1,000 head)	(1,000 head)	(percent)	(percent)
Arizona	246	298	297	121	100
California	440	525	530	120	101
Colorado	930	950	930	100	98
Idaho	260	245	235	90	96
Iowa	670	720	710	106	99
Kansas	2,190	2,320	2,240	102	97
Minnesota	140	145	135	96	93
Nebraska	2,230	2,530	2,400	108	95
Oklahoma	325	315	315	97	100
South Dakota	225	235	215	96	91
Texas	2,670	2,730	2,740	103	100
Washington	205	220	230	112	105
Other States	290	320	305	105	95
United States	10,821	11,553	11,282	104	98

Cattle on Feed Inventory on 1,000+ Capacity Feedlots – United States

Million head

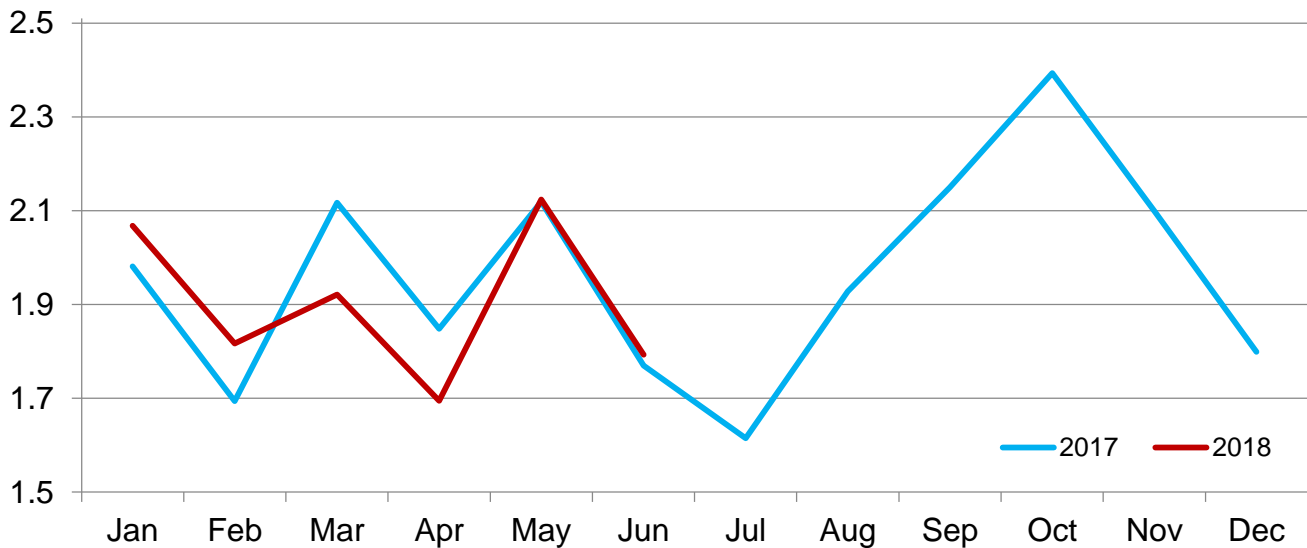


Cattle Placed on Feed on 1,000+ Capacity Feedlots by Month – States and United States: 2017 and 2018

State	During June 2017	During May 2018	During June 2018		
			Number	Percent of previous year	Percent of previous month
	(1,000 head)	(1,000 head)	(1,000 head)	(percent)	(percent)
Arizona	22	22	22	100	100
California	56	88	64	114	73
Colorado	125	170	145	116	85
Idaho	35	36	38	109	106
Iowa	72	80	77	107	96
Kansas	395	480	405	103	84
Minnesota	15	16	14	93	88
Nebraska	425	465	415	98	89
Oklahoma	51	70	58	114	83
South Dakota	40	29	39	98	134
Texas	450	570	430	96	75
Washington	40	42	46	115	110
Other States	44	56	40	91	71
United States	1,770	2,124	1,793	101	84

Number of Cattle Placed on 1,000+ Capacity Feedlots – United States

Million head



Cattle Placed on Feed by Weight Group on 1,000+ Capacity Feedlots and Month – States and United States: 2017 and 2018

State	During June 2017							
	Under 600 lbs (1,000 head)	600-699 lbs (1,000 head)	700-799 lbs (1,000 head)	800-899 lbs (1,000 head)	900+ lbs ¹ (1,000 head)	900-999 lbs (1,000 head)	1,000+ lbs (1,000 head)	Total (1,000 head)
Colorado	25	25	35	20	20	(D)	(D)	125
Kansas	65	80	110	95	45	(D)	(D)	395
Nebraska	35	55	105	110	120	(D)	(D)	425
Texas	155	105	105	65	20	(D)	(D)	450
Other States ...	95	50	75	95	60	(D)	(D)	375
United States ..	375	315	430	385	(X)	170	95	1,770
State	During May 2018							
	Under 600 lbs (1,000 head)	600-699 lbs (1,000 head)	700-799 lbs (1,000 head)	800-899 lbs (1,000 head)	900+ lbs ¹ (1,000 head)	900-999 lbs (1,000 head)	1,000+ lbs (1,000 head)	Total (1,000 head)
Colorado	25	25	35	45	40	(D)	(D)	170
Kansas	60	85	135	125	75	(D)	(D)	480
Nebraska	45	55	95	140	130	(D)	(D)	465
Texas	185	120	130	105	30	(D)	(D)	570
Other States ...	130	55	85	109	60	(D)	(D)	439
United States ..	445	340	480	524	(X)	235	100	2,124
State	During June 2018							
	Under 600 lbs (1,000 head)	600-699 lbs (1,000 head)	700-799 lbs (1,000 head)	800-899 lbs (1,000 head)	900+ lbs ¹ (1,000 head)	900-999 lbs (1,000 head)	1,000+ lbs (1,000 head)	Total (1,000 head)
Colorado	25	30	35	30	25	(D)	(D)	145
Kansas	65	90	110	90	50	(D)	(D)	405
Nebraska	40	60	80	110	125	(D)	(D)	415
Texas	160	110	85	55	20	(D)	(D)	430
Other States ...	110	55	75	93	65	(D)	(D)	398
United States ..	400	345	385	378	(X)	185	100	1,793

(D) Withheld to avoid disclosing data for individual operations.

(X) Not applicable.

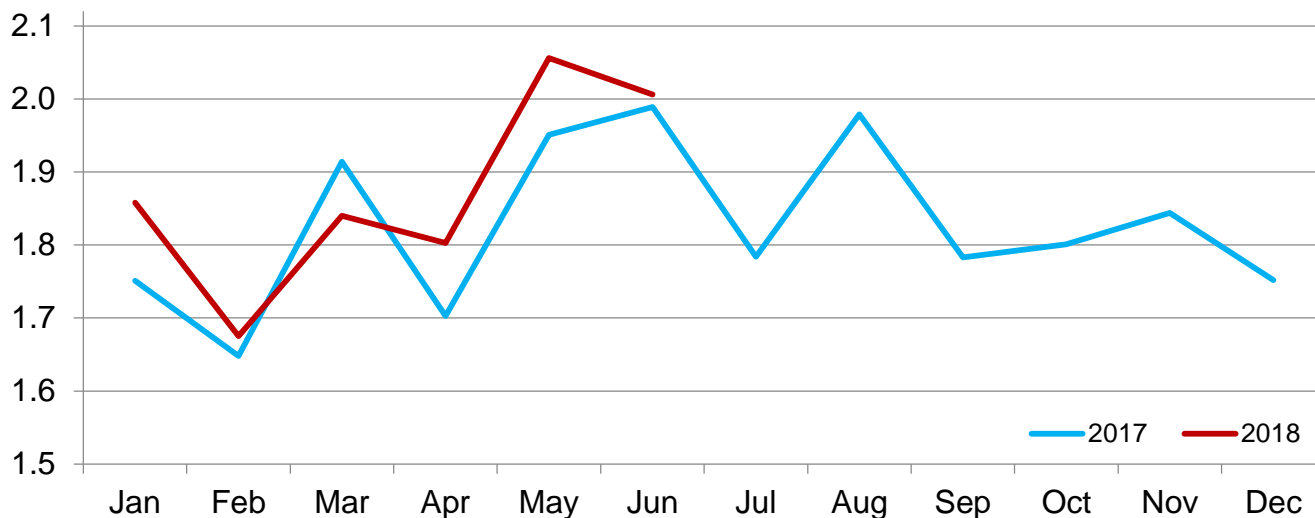
¹ The 900 pounds and greater weight group is the sum of 900-999 pounds and 1,000 pounds and greater weight groups.

Cattle Marketed on 1,000+ Capacity Feedlots by Month – States and United States: 2017 and 2018

State	During June 2017 (1,000 head)	During May 2018 (1,000 head)	During June 2018		
			Number (1,000 head)	Percent of previous year (percent)	Percent of previous month (percent)
Arizona	21	21	22	105	105
California	52	60	54	104	90
Colorado	160	150	160	100	107
Idaho	43	45	47	109	104
Iowa	80	87	85	106	98
Kansas	465	440	475	102	108
Minnesota	19	25	23	121	92
Nebraska	530	570	530	100	93
Oklahoma	55	64	57	104	89
South Dakota	53	45	56	106	124
Texas	420	460	410	98	89
Washington	39	31	35	90	113
Other States	52	58	52	100	90
United States	1,989	2,056	2,006	101	98

Number of Cattle Marketed on 1,000+ Capacity Feedlots – United States

Million head



Cattle Other Disappearance on 1,000+ Capacity Feedlots by Month – States and United States: 2017 and 2018

State	During June 2017 (1,000 head)	During May 2018 (1,000 head)	During June 2018		
			Number (1,000 head)	Percent of previous year (percent)	Percent of previous month (percent)
Arizona	1	1	1	100	100
California	4	3	5	125	167
Colorado	5	10	5	100	50
Idaho	2	1	1	50	100
Iowa	2	3	2	100	67
Kansas	10	10	10	100	100
Minnesota	1	1	1	100	100
Nebraska	15	25	15	100	60
Oklahoma	1	1	1	100	100
South Dakota	2	4	3	150	75
Texas	10	10	10	100	100
Washington	1	1	1	100	100
Other States	2	3	3	150	100
United States	56	73	58	104	79

Cattle on Feed by Class on 1,000+ Capacity Feedlots by Quarter – States and United States: 2017 and 2018

State	Steers and steer calves			Heifers and heifer calves		
	Jul 1, 2017	Apr 1, 2018	Jul 1, 2018	Jul 1, 2017	Apr 1, 2018	Jul 1, 2018
	(1,000 Head)	(1,000 Head)	(1,000 Head)	(1,000 Head)	(1,000 Head)	(1,000 Head)
Arizona	239	284	290	7	10	7
California	410	450	470	30	50	60
Colorado	575	535	520	355	415	410
Idaho	180	170	165	80	80	70
Iowa	510	540	520	160	200	190
Kansas	1,120	1,240	1,150	1,070	1,100	1,090
Minnesota	120	131	108	20	29	27
Nebraska	1,440	1,760	1,580	790	930	820
Oklahoma	190	165	180	135	145	135
South Dakota	135	150	130	90	110	85
Texas	1,730	1,760	1,680	940	940	1,060
Washington	125	140	145	80	70	85
Other States	190	210	190	100	115	115
United States	6,964	7,535	7,128	3,857	4,194	4,154

Terms and Definitions of Cattle on Feed Estimates

Cattle on feed are steers and heifers being fed a ration of grain, silage, hay and/or protein supplement for slaughter market that are expected to produce a carcass that will grade select or better. It excludes cattle being "backgrounded only" for later sale as feeders or later placement in another feedlot.

Placements are steers and heifers put into a feedlot, fed a ration which will produce a carcass that will grade select or better, and are intended for the slaughter market.

Marketings are steers and heifers shipped out of feedlots to a slaughter market.

Other disappearance includes death loss, movement from feedlots to pasture, and shipments to other feedlots for further feeding.

Statistical Methodology

Survey Procedures: During January and July all known feedlots in the United States with capacity of 1,000 or more head are surveyed to provide data for cattle on feed estimates. During the other months, all known feedlots from 16 States are surveyed. The 16 States account for approximately 98 percent of the cattle on feed in feedlots with capacity of 1,000 or more head. Individual State estimates are published monthly for 12 of the 16 States. Data collected from the remaining 4 States are used to establish the "Other States" estimates. These 4 States include Illinois, New Mexico, Oregon, and Wyoming. The "Other States" category represents all cattle on feed with a capacity of 1,000 or more head for the rest of the United States.

Estimating Procedures: These cattle on feed estimates were prepared by the Agricultural Statistics Board after reviewing recommendations and analysis submitted by Regional Field Offices. Regional and State survey data were reviewed for reasonableness with each other and with estimates from the previous month when establishing the current estimates.

Revision Policy: Revisions to previous estimates are made to improve month to month relationships. Estimates for the previous month are subject to revision in all States each month when current estimates are made. In February, all monthly estimates for the previous year, and the number of feedlots and annual marketings from two years ago are reviewed and subject to revisions. The reviews are primarily based on slaughter data, state check-off or brand data, and any other data that may have been received after the original estimate was made. Estimates will also be reviewed after data from the *Census of Agriculture* are available. No revisions will be made after that date and estimates become final.

Reliability: Since all 1,000+ capacity cattle on feed operators in every State are not included in the monthly survey, survey estimates are subject to sampling variability. Survey results are also subject to non-sampling errors such as omissions, duplications, and mistakes in reporting, recording, and processing the data. The effects of these errors cannot be measured directly. They are minimized through rigid quality controls in the data collection process and through a careful review of all reported data for consistency and reasonableness.

To assist users in evaluating the reliability of estimates in this report, the "**Root Mean Square Error**" is shown for selected items in the table on the following page. The "Root Mean Square Error" is a statistical measure based on past performance and is computed using the differences between first and latest estimates. The "Root Mean Square Error" for cattle on feed inventory estimates over the past 24 months is 0.0 percent. This means that chances are 2 out of 3 that the final estimate will not be above or below the current estimate of 11.3 million head by more than 0.0 percent. Chances are 9 out of 10 that the difference will not exceed 0.1 percent.

The table on the following page shows a 24 month record of the range of differences between first and latest estimates for selected items. Using estimates of number on feed as an example, changes between the first estimate and the latest estimate during the past 24 months have averaged 1,000 head, ranging from 0 to 15,000 head. During this period the initial estimate has been above the latest estimate 1 time and has been below the latest estimate 1 times. This does not imply that the initial estimate is likely to understate or overstate final inventory.

Reliability of Monthly Cattle on Feed Estimates

[Based on data for the past 24 months]

Item	Root mean square error	90 percent confidence level	Difference between first and latest estimate				
			Average	Smallest	Largest	Months	
						Below latest	Above latest
	(percent)	(percent)	(1,000)	(1,000)	(1,000)	(number)	(number)
Number on feed	0.0	0.1	1	0	15	1	1
Placements	0.2	0.4	1	0	15	1	2
Marketings	0.1	0.2	0	0	10	0	1

Information Contacts

Listed below are the commodity specialists in the Livestock Branch of the National Agricultural Statistics Service to contact for additional information. E-mail inquiries may be sent to nass@nass.usda.gov.

Travis Averill, Chief, Livestock Branch	(202) 720-3570
Scott Hollis, Head, Livestock Section	(202) 690-2424
Sherry Bertramsen – Livestock Slaughter	(202) 690-8632
Holly Brenize – Sheep and Goats	(202) 720-0585
Donnie Fike – Dairy Products	(202) 690-3236
Heidi Gleich – Cattle, Cattle on Feed	(202) 720-3040
Mike Miller – Milk Production and Milk Cows	(202) 720-3278
Seth Riggins – Hogs and Pigs	(202) 720-3106

Access to NASS Reports

For your convenience, you may access NASS reports and products the following ways:

- All reports are available electronically, at no cost, on the NASS web site: www.nass.usda.gov
- Both national and state specific reports are available via a free e-mail subscription. To set-up this free subscription, visit www.nass.usda.gov and click on “National” or “State” in upper right corner above “search” box to create an account and select the reports you would like to receive.

For more information on NASS surveys and reports, call the NASS Agricultural Statistics Hotline at (800) 727-9540, 7:30 a.m. to 4:00 p.m. ET, or e-mail: nass@nass.usda.gov.

The U.S. Department of Agriculture (USDA) prohibits discrimination against its customers, employees, and applicants for employment on the basis of race, color, national origin, age, disability, sex, gender identity, religion, reprisal, and where applicable, political beliefs, marital status, familial or parental status, sexual orientation, or all or part of an individual's income is derived from any public assistance program, or protected genetic information in employment or in any program or activity conducted or funded by the Department. (Not all prohibited bases will apply to all programs and/or employment activities.)

If you wish to file a Civil Rights program complaint of discrimination, complete the [USDA Program Discrimination Complaint Form](#) (PDF), found online at www.ascr.usda.gov/filing-program-discrimination-complaint-usda-customer, or at any USDA office, or call (866) 632-9992 to request the form. You may also write a letter containing all of the information requested in the form. Send your completed complaint form or letter to us by mail at U.S. Department of Agriculture, Director, Office of Adjudication, 1400 Independence Avenue, S.W., Washington, D.C. 20250-9410, by fax (202) 690-7442 or email at program.intake@usda.gov.