



# Cattle on Feed

ISSN: 1948-9080

---

Released December 18, 2020, by the National Agricultural Statistics Service (NASS), Agricultural Statistics Board, United States Department of Agriculture (USDA).

## United States Cattle on Feed Up Slightly

**Cattle and calves on feed** for the slaughter market in the United States for feedlots with capacity of 1,000 or more head totaled 12.0 million head on December 1, 2020. The inventory was slightly above December 1, 2019.

**Placements** in feedlots during November totaled 1.91 million head, 9 percent below 2019. Net placements were 1.85 million head. During November, placements of cattle and calves weighing less than 600 pounds were 520,000 head, 600-699 pounds were 460,000 head, 700-799 pounds were 400,000 head, 800-899 pounds were 306,000 head, 900-999 pounds were 130,000 head, and 1,000 pounds and greater were 90,000 head.

**Marketings** of fed cattle during November totaled 1.78 million head, 2 percent below 2019.

**Other disappearance** totaled 61,000 head during November, 6 percent below 2019.

**Cattle on Feed Inventory, Placements, Marketings, and Other Disappearance on 1,000+ Capacity Feedlots – United States: December 1, 2019 and 2020**

Item	2019	2020	Percent of previous year
	(1,000 head)	(1,000 head)	(percent)
On feed November 1 .....	11,816	11,973	101
Placed on feed during November .....	2,093	1,906	91
Fed cattle marketed during November .....	1,813	1,782	98
Other disappearance during November .....	65	61	94
On feed December 1 .....	12,031	12,036	100

**Cattle on Feed Inventory, Placements, Marketings, and Other Disappearance on 1,000+ Capacity Feedlots – United States: November 1, 2019 and 2020**

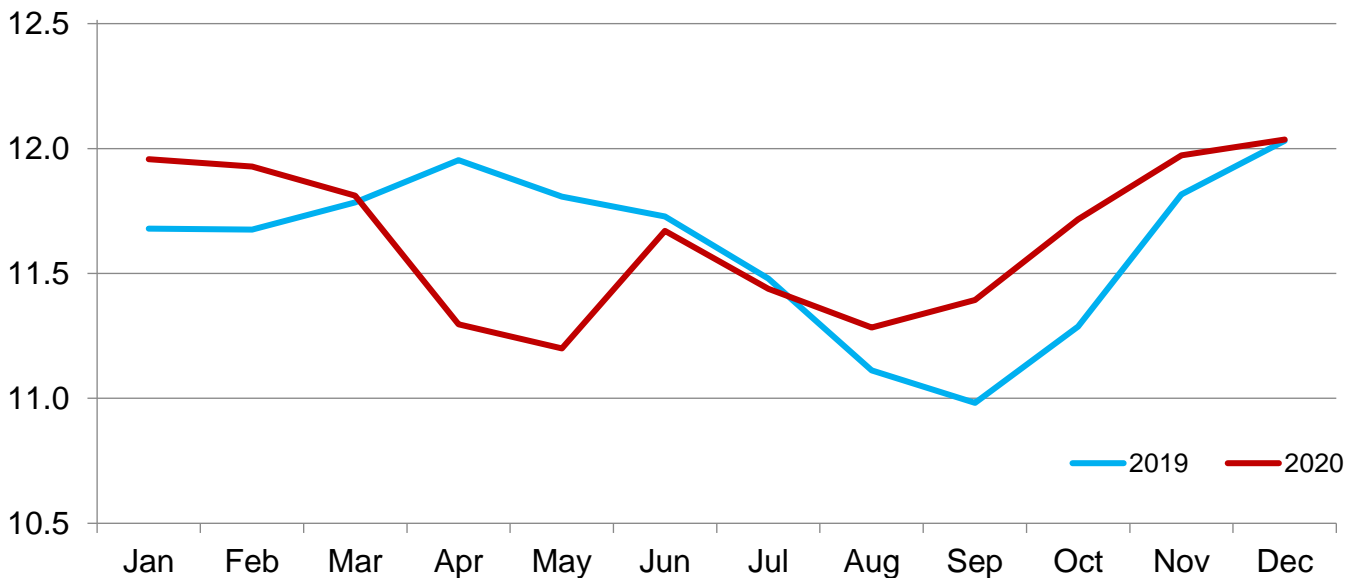
Item	2019	2020	Percent of previous year
	(1,000 head)	(1,000 head)	(percent)
On feed October 1 .....	11,288	11,717	104
Placed on feed during October .....	2,462	2,192	89
Fed cattle marketed during October .....	1,875	1,873	100
Other disappearance during October .....	59	63	107
On feed November 1 .....	11,816	11,973	101

**Cattle on Feed Inventory on 1,000+ Capacity Feedlots by Month – States and United States: 2019 and 2020**

State	December 1, 2019	November 1, 2020	December 1, 2020		
			Inventory	Percent of previous year	Percent of previous month
	(1,000 head)	(1,000 head)	(1,000 head)	(percent)	(percent)
Arizona .....	256	258	256	100	99
California .....	550	555	555	101	100
Colorado .....	1,100	1,120	1,130	103	101
Idaho .....	300	280	290	97	104
Iowa .....	690	620	610	88	98
Kansas .....	2,430	2,520	2,500	103	99
Minnesota .....	140	125	125	89	100
Nebraska .....	2,480	2,500	2,530	102	101
Oklahoma .....	325	320	325	100	102
South Dakota .....	250	225	250	100	111
Texas .....	2,930	2,910	2,900	99	100
Washington .....	240	245	255	106	104
Other States .....	340	295	310	91	105
United States .....	12,031	11,973	12,036	100	101

**Cattle on Feed Inventory on 1,000+ Capacity Feedlots – United States**

Million head

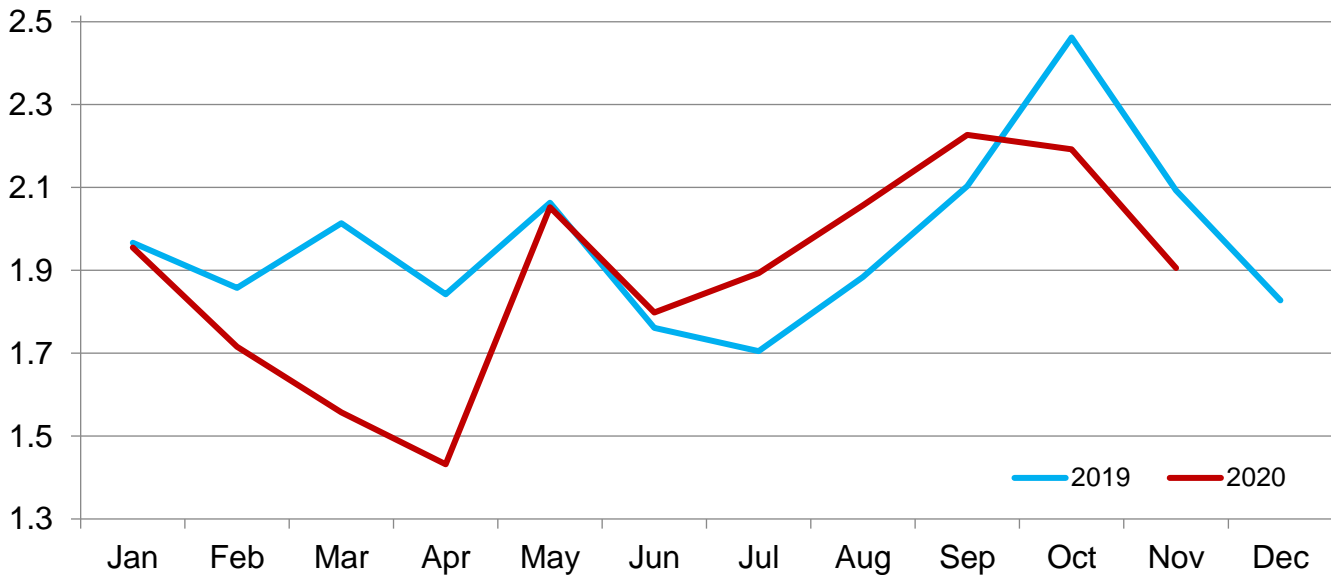


**Cattle Placed on Feed on 1,000+ Capacity Feedlots by Month – States and United States: 2019 and 2020**

State	During November 2019 (1,000 head)	During October 2020 (1,000 head)	During November 2020		
			Placements (1,000 head)	Percent of previous year (percent)	Percent of previous month (percent)
Arizona .....	27	27	22	81	81
California .....	64	66	58	91	88
Colorado .....	185	175	165	89	94
Idaho .....	56	53	50	89	94
Iowa .....	110	105	83	75	79
Kansas .....	415	430	415	100	97
Minnesota .....	25	35	16	64	46
Nebraska .....	520	560	460	88	82
Oklahoma .....	58	51	52	90	102
South Dakota .....	75	84	79	105	94
Texas .....	465	480	405	87	84
Washington .....	42	61	45	107	74
Other States .....	51	65	56	110	86
United States .....	2,093	2,192	1,906	91	87

**Cattle Placed on 1,000+ Capacity Feedlots – United States**

Million head



**Cattle Placed on Feed by Weight Group on 1,000+ Capacity Feedlots and Month – States and United States: 2019 and 2020**

State	During November 2019							
	Under 600 lbs	600-699 lbs	700-799 lbs	800-899 lbs	900+ lbs <sup>1</sup>	900-999 lbs	1,000+ lbs	Total
	(1,000 head)	(1,000 head)	(1,000 head)	(1,000 head)	(1,000 head)	(1,000 head)	(1,000 head)	(1,000 head)
Colorado .....	60	40	30	30	25	(D)	(D)	185
Kansas .....	60	105	125	80	45	(D)	(D)	415
Nebraska .....	100	120	100	90	110	(D)	(D)	520
Texas .....	200	120	85	45	15	(D)	(D)	465
Other States ...	200	115	83	65	45	(D)	(D)	508
United States ..	620	500	423	310	(X)	130	110	2,093
State	During October 2020							
	Under 600 lbs	600-699 lbs	700-799 lbs	800-899 lbs	900+ lbs <sup>1</sup>	900-999 lbs	1,000+ lbs	Total
	(1,000 head)	(1,000 head)	(1,000 head)	(1,000 head)	(1,000 head)	(1,000 head)	(1,000 head)	(1,000 head)
Colorado .....	35	30	35	40	35	(D)	(D)	175
Kansas .....	65	90	140	90	45	(D)	(D)	430
Nebraska .....	120	125	90	110	115	(D)	(D)	560
Texas .....	170	125	115	55	15	(D)	(D)	480
Other States ...	180	125	85	92	65	(D)	(D)	547
United States ..	570	495	465	387	(X)	185	90	2,192
State	During November 2020							
	Under 600 lbs	600-699 lbs	700-799 lbs	800-899 lbs	900+ lbs <sup>1</sup>	900-999 lbs	1,000+ lbs	Total
	(1,000 head)	(1,000 head)	(1,000 head)	(1,000 head)	(1,000 head)	(1,000 head)	(1,000 head)	(1,000 head)
Colorado .....	50	35	30	30	20	(D)	(D)	165
Kansas .....	60	100	125	85	45	(D)	(D)	415
Nebraska .....	80	110	90	85	95	(D)	(D)	460
Texas .....	150	115	80	45	15	(D)	(D)	405
Other States ...	180	100	75	61	45	(D)	(D)	461
United States ..	520	460	400	306	(X)	130	90	1,906

(D) Withheld to avoid disclosing data for individual operations.

(X) Not applicable.

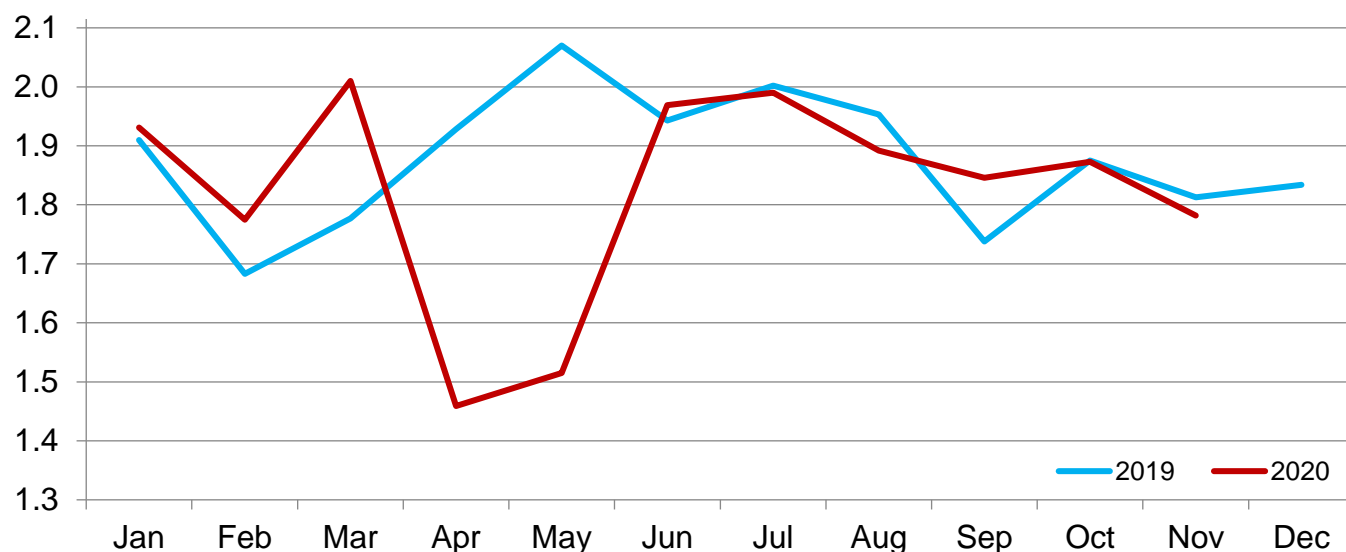
<sup>1</sup> The 900 pounds and greater weight group is the sum of 900-999 pounds and 1,000 pounds and greater weight groups.

**Cattle Marketed on 1,000+ Capacity Feedlots by Month – States and United States: 2019 and 2020**

State	During November 2019	During October 2020	During November 2020		
			Marketings	Percent of previous year	Percent of previous month
			(1,000 head)	(percent)	(percent)
Arizona .....	26	25	23	88	92
California .....	47	49	51	109	104
Colorado .....	150	160	150	100	94
Idaho .....	44	41	39	89	95
Iowa .....	76	92	91	120	99
Kansas .....	395	440	425	108	97
Minnesota .....	14	14	15	107	107
Nebraska .....	475	460	415	87	90
Oklahoma .....	57	45	46	81	102
South Dakota .....	64	48	53	83	110
Texas .....	390	420	400	103	95
Washington .....	35	35	34	97	97
Other States .....	40	44	40	100	91
United States .....	1,813	1,873	1,782	98	95

## Cattle Marketed on 1,000+ Capacity Feedlots – United States

Million head



### Cattle Other Disappearance on 1,000+ Capacity Feedlots by Month – States and United States: 2019 and 2020

State	During November 2019 (1,000 head)	During October 2020 (1,000 head)	During November 2020		
			Other disappearance (1,000 head)	Percent of previous year (percent)	Percent of previous month (percent)
Arizona .....	1	1	1	100	100
California .....	7	7	7	100	100
Colorado .....	5	5	5	100	100
Idaho .....	2	2	1	50	50
Iowa .....	4	3	2	50	67
Kansas .....	10	10	10	100	100
Minnesota .....	1	1	1	100	100
Nebraska .....	15	10	15	100	150
Oklahoma .....	1	1	1	100	100
South Dakota .....	1	1	1	100	100
Texas .....	15	20	15	100	75
Washington .....	2	1	1	50	100
Other States .....	1	1	1	100	100
United States .....	65	63	61	94	97

## Terms and Definitions of Cattle on Feed Estimates

**Cattle on feed** are steers and heifers being fed a ration of grain, silage, hay and/or protein supplement for slaughter market that are expected to produce a carcass that will grade select or better. It excludes cattle being "backgrounded only" for later sale as feeders or later placement in another feedlot.

**Placements** are steers and heifers put into a feedlot, fed a ration which will produce a carcass that will grade select or better, and are intended for the slaughter market.

**Marketings** are steers and heifers shipped out of feedlots to a slaughter market.

**Other disappearance** includes death loss, movement from feedlots to pasture, and shipments to other feedlots for further feeding.

## Statistical Methodology

**Survey Procedures:** During January and July all known feedlots in the United States with capacity of 1,000 or more head are surveyed to provide data for cattle on feed estimates. During the other months, all known feedlots from 16 States are surveyed. The 16 States account for approximately 98 percent of the cattle on feed in feedlots with capacity of 1,000 or more head. Individual State estimates are published monthly for 12 of the 16 States. Data collected from the remaining 4 States are used to establish the "Other States" estimates. These 4 States include Illinois, New Mexico, Oregon, and Wyoming. The "Other States" category represents all cattle on feed with a capacity of 1,000 or more head for the rest of the United States.

**Estimating Procedures:** These cattle on feed estimates were prepared by the Agricultural Statistics Board after reviewing recommendations and analysis submitted by Regional Field Offices. Regional and State survey data were reviewed for reasonableness with each other and with estimates from the previous month when establishing the current estimates.

**Revision Policy:** Revisions to previous estimates are made to improve month to month relationships. Estimates for the previous month are subject to revision in all States each month when current estimates are made. In February, all monthly estimates for the previous year, and the number of feedlots and annual marketings from two years ago are reviewed and subject to revisions. The reviews are primarily based on slaughter data, state check-off or brand data, and any other data that may have been received after the original estimate was made. Estimates will also be reviewed after data from the *Census of Agriculture* are available. No revisions will be made after that date and estimates become final.

**Reliability:** Since all 1,000+ capacity cattle on feed operators in every State are not included in the monthly survey, survey estimates are subject to sampling variability. Survey results are also subject to non-sampling errors such as omissions, duplications, and mistakes in reporting, recording, and processing the data. The effects of these errors cannot be measured directly. They are minimized through rigid quality controls in the data collection process and through a careful review of all reported data for consistency and reasonableness.

To assist users in evaluating the reliability of estimates in this report, the "**Root Mean Square Error**" is shown for selected items in the table on the following page. The "Root Mean Square Error" is a statistical measure based on past performance and is computed using the differences between first and latest estimates. The "Root Mean Square Error" for cattle on feed inventory estimates over the past 24 months is 0.1 percent. This means that chances are 2 out of 3 that the final estimate will not be above or below the current estimate of 12.0 million head by more than 0.1 percent. Chances are 9 out of 10 that the difference will not exceed 0.1 percent.

The table on the following page shows a 24 month record of the range of differences between first and latest estimates for selected items. Using estimates of number on feed as an example, changes between the first estimate and the latest estimate during the past 24 months have averaged 4,000 head, ranging from 0 to 15,000 head. During this period the initial estimate has been above the latest estimate 8 times and has been below the latest estimate 2 times. This does not imply that the initial estimate is likely to understate or overstate final inventory.

## Reliability of Monthly Cattle on Feed Estimates

[Based on data for the past 24 months]

Item	Root mean square error	90 percent confidence level	Difference between first and latest estimate				
			Average	Smallest	Largest	Months	
						Below latest	Above latest
	(percent)	(percent)	(1,000)	(1,000)	(1,000)	(number)	(number)
On feed .....	0.1	0.1	4	0	15	2	8
Placements .....	0.3	0.5	3	0	15	6	3
Marketings .....	0.2	0.4	1	0	15	1	1

## Information Contacts

Listed below are the commodity specialists in the Livestock Branch of the National Agricultural Statistics Service to contact for additional information. E-mail inquiries may be sent to [nass@usda.gov](mailto:nass@usda.gov).

Travis Averill, Chief, Livestock Branch .....	(202) 692-0069
Scott Hollis, Head, Livestock Section .....	(202) 690-2424
Sherry Bertramsen – Livestock Slaughter .....	(202) 690-8632
Holly Brenize – Sheep and Goats .....	(202) 720-0585
Ryan Cowen – Cattle, Cattle on Feed .....	(202) 720-3040
Mike Miller – Milk Production and Milk Cows .....	(202) 720-3278
Suzanne Richards – Dairy Products .....	(202) 720-4448
Seth Riggins – Hogs and Pigs .....	(202) 720-3106



## Access to NASS Reports

For your convenience, you may access NASS reports and products the following ways:

- All reports are available electronically, at no cost, on the NASS web site: [www.nass.usda.gov](http://www.nass.usda.gov)
- Both national and state specific reports are available via a free e-mail subscription. To set-up this free subscription, visit [www.nass.usda.gov](http://www.nass.usda.gov) and click on “National” or “State” in upper right corner above “search” box to create an account and select the reports you would like to receive.
- Cornell’s Mann Library has launched a new website housing NASS’s and other agencies archived reports. The new website, <https://usda.library.cornell.edu>. All email subscriptions containing reports will be sent from the new website, <https://usda.library.cornell.edu>. To continue receiving the reports via e-mail, you will have to go to the new website, create a new account and re-subscribe to the reports. If you need instructions to set up an account or subscribe, they are located at: <https://usda.library.cornell.edu/help>. You should whitelist [notifications@usda-esmis.library.cornell.edu](mailto:notifications@usda-esmis.library.cornell.edu) in your email client to avoid the emails going into spam/junk folders.

For more information on NASS surveys and reports, call the NASS Agricultural Statistics Hotline at (800) 727-9540, 7:30 a.m. to 4:00 p.m. ET, or e-mail: [nass@usda.gov](mailto:nass@usda.gov).

The U.S. Department of Agriculture (USDA) prohibits discrimination against its customers, employees, and applicants for employment on the basis of race, color, national origin, age, disability, sex, gender identity, religion, reprisal, and where applicable, political beliefs, marital status, familial or parental status, sexual orientation, or all or part of an individual's income is derived from any public assistance program, or protected genetic information in employment or in any program or activity conducted or funded by the Department. (Not all prohibited bases will apply to all programs and/or employment activities.)

If you wish to file a Civil Rights program complaint of discrimination, complete the [USDA Program Discrimination Complaint Form](#) (PDF), found online at [www.ascr.usda.gov/filing-program-discrimination-complaint-usda-customer](http://www.ascr.usda.gov/filing-program-discrimination-complaint-usda-customer), or at any USDA office, or call (866) 632-9992 to request the form. You may also write a letter containing all of the information requested in the form. Send your completed complaint form or letter to us by mail at U.S. Department of Agriculture, Director, Office of Adjudication, 1400 Independence Avenue, S.W., Washington, D.C. 20250-9410, by fax (202) 690-7442 or email at [program.intake@usda.gov](mailto:program.intake@usda.gov).



**USDA's** **Agricultural Outlook Forum**  
**97th** *Building on Innovation:*  
**Annual** *A Pathway to Resilience*

February 18-19, 2021 • <https://www.usda.gov/oce/ag-outlook-forum>

Registration is Now Open

to USDA's 97th Agricultural Outlook Forum!

**Building on Innovation: A Pathway to Resilience**

Join us for this virtual event on February 18-19, 2021

The Forum is free to attend

[Register Today](#)