



Cattle on Feed

ISSN: 1948-9080

Released September 25, 2020, by the National Agricultural Statistics Service (NASS), Agricultural Statistics Board, United States Department of Agriculture (USDA).

United States Cattle on Feed Up 4 Percent

Cattle and calves on feed for the slaughter market in the United States for feedlots with capacity of 1,000 or more head totaled 11.4 million head on September 1, 2020. The inventory was 4 percent above September 1, 2019. This is the highest September 1 inventory since the series began in 1996.

Placements in feedlots during August totaled 2.06 million head, 9 percent above 2019. Net placements were 2.00 million head. During August, placements of cattle and calves weighing less than 600 pounds were 405,000 head, 600-699 pounds were 335,000 head, 700-799 pounds were 470,000 head, 800-899 pounds were 522,000 head, 900-999 pounds were 230,000 head, and 1,000 pounds and greater were 95,000 head.

Marketings of fed cattle during August totaled 1.89 million head, 3 percent below 2019.

Other disappearance totaled 55,000 head during August, 10 percent below 2019.

Cattle on Feed Inventory, Placements, Marketings, and Other Disappearance on 1,000+ Capacity Feedlots – United States: September 1, 2019 and 2020

Item	2019	2020	Percent of previous year
	(1,000 head)	(1,000 head)	(percent)
On feed August 1	11,112	11,284	102
Placed on feed during August	1,884	2,057	109
Fed cattle marketed during August	1,953	1,892	97
Other disappearance during August	61	55	90
On feed September 1	10,982	11,394	104

Cattle on Feed Inventory, Placements, Marketings, and Other Disappearance on 1,000+ Capacity Feedlots – United States: August 1, 2019 and 2020

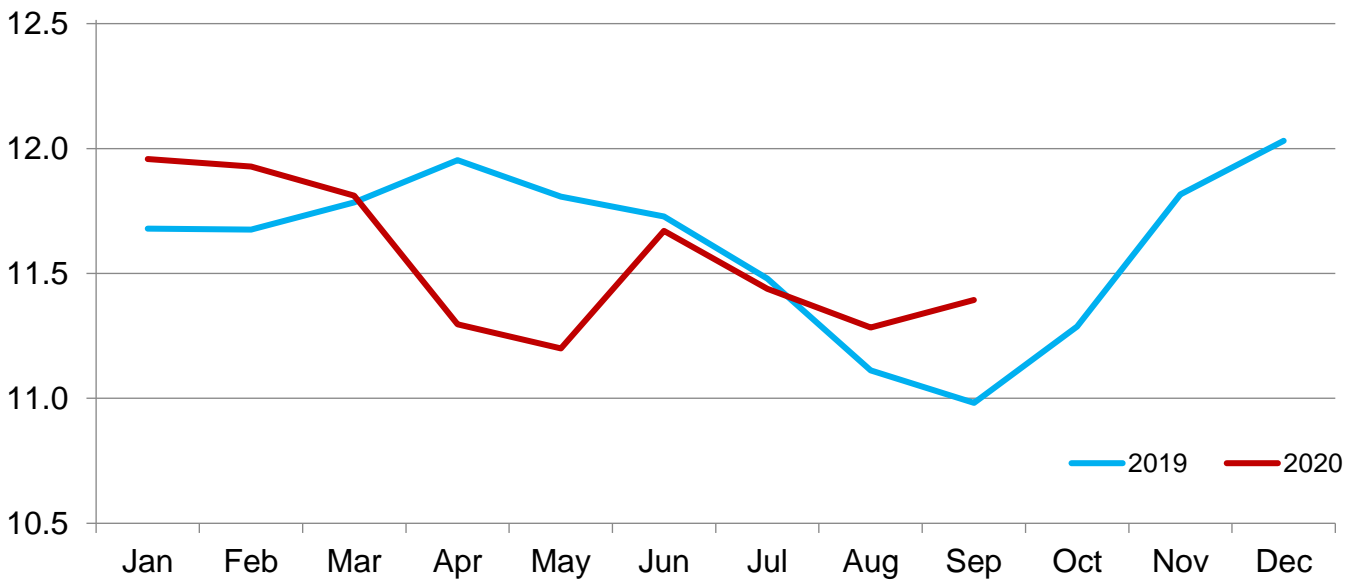
Item	2019	2020	Percent of previous year
	(1,000 head)	(1,000 head)	(percent)
On feed July 1	11,480	11,438	100
Placed on feed during July	1,705	1,893	111
Fed cattle marketed during July	2,002	1,990	99
Other disappearance during July	71	57	80
On feed August 1	11,112	11,284	102

Cattle on Feed Inventory on 1,000+ Capacity Feedlots by Month – States and United States: 2019 and 2020

State	September 1, 2019	August 1, 2020	September 1, 2020		
			Inventory	Percent of previous year	Percent of previous month
	(1,000 head)	(1,000 head)	(1,000 head)	(percent)	(percent)
Arizona	257	269	264	103	98
California	530	545	535	101	98
Colorado	930	1,020	1,040	112	102
Idaho	270	260	255	94	98
Iowa	630	620	610	97	98
Kansas	2,340	2,410	2,470	106	102
Minnesota	100	120	110	110	92
Nebraska	2,160	2,220	2,280	106	103
Oklahoma	315	305	310	98	102
South Dakota	205	180	190	93	106
Texas	2,730	2,850	2,850	104	100
Washington	220	225	220	100	98
Other States	295	260	260	88	100
United States	10,982	11,284	11,394	104	101

Cattle on Feed Inventory on 1,000+ Capacity Feedlots – United States

Million head

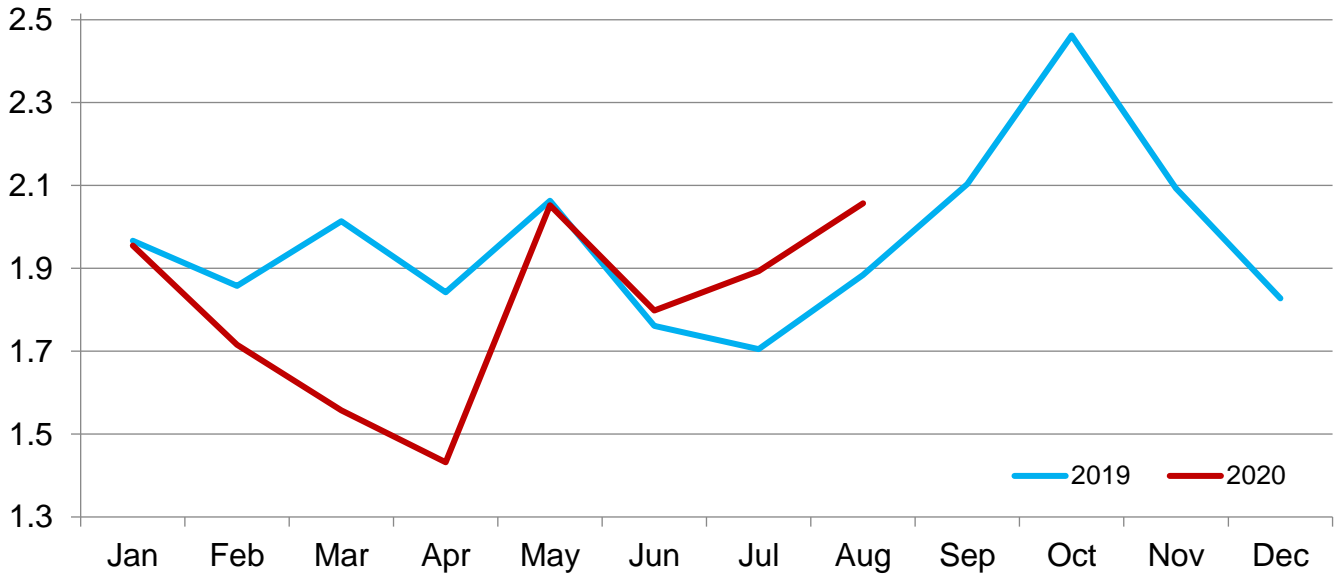


Cattle Placed on Feed on 1,000+ Capacity Feedlots by Month – States and United States: 2019 and 2020

State	During August 2019 (1,000 head)	During July 2020 (1,000 head)	During August 2020		
			Placements (1,000 head)	Percent of previous year (percent)	Percent of previous month (percent)
Arizona	21	20	15	71	75
California	56	59	52	93	88
Colorado	170	165	180	106	109
Idaho	44	33	41	93	124
Iowa	71	63	75	106	119
Kansas	440	520	540	123	104
Minnesota	14	11	12	86	109
Nebraska	445	470	505	113	107
Oklahoma	51	41	58	114	141
South Dakota	45	20	47	104	235
Texas	435	415	440	101	106
Washington	43	33	40	93	121
Other States	49	43	52	106	121
United States	1,884	1,893	2,057	109	109

Cattle Placed on 1,000+ Capacity Feedlots – United States

Million head



Cattle Placed on Feed by Weight Group on 1,000+ Capacity Feedlots and Month – States and United States: 2019 and 2020

State	During August 2019							
	Under 600 lbs	600-699 lbs	700-799 lbs	800-899 lbs	900+ lbs ¹	900-999 lbs	1,000+ lbs	Total
	(1,000 head)	(1,000 head)	(1,000 head)	(1,000 head)	(1,000 head)	(1,000 head)	(1,000 head)	(1,000 head)
Colorado	25	25	35	45	40	(D)	(D)	170
Kansas	60	80	125	120	55	(D)	(D)	440
Nebraska	40	40	85	130	150	(D)	(D)	445
Texas	165	110	100	50	10	(D)	(D)	435
Other States ...	95	45	79	95	80	(D)	(D)	394
United States ..	385	300	424	440	(X)	230	105	1,884

State	During July 2020							
	Under 600 lbs	600-699 lbs	700-799 lbs	800-899 lbs	900+ lbs ¹	900-999 lbs	1,000+ lbs	Total
	(1,000 head)	(1,000 head)	(1,000 head)	(1,000 head)	(1,000 head)	(1,000 head)	(1,000 head)	(1,000 head)
Colorado	35	30	40	30	30	(D)	(D)	165
Kansas	65	95	155	145	60	(D)	(D)	520
Nebraska	40	55	110	160	105	(D)	(D)	470
Texas	185	100	70	45	15	(D)	(D)	415
Other States ...	95	35	60	78	55	(D)	(D)	323
United States ..	420	315	435	458	(X)	195	70	1,893

State	During August 2020							
	Under 600 lbs	600-699 lbs	700-799 lbs	800-899 lbs	900+ lbs ¹	900-999 lbs	1,000+ lbs	Total
	(1,000 head)	(1,000 head)	(1,000 head)	(1,000 head)	(1,000 head)	(1,000 head)	(1,000 head)	(1,000 head)
Colorado	25	30	35	50	40	(D)	(D)	180
Kansas	60	100	170	150	60	(D)	(D)	540
Nebraska	45	50	105	165	140	(D)	(D)	505
Texas	180	110	90	50	10	(D)	(D)	440
Other States ...	95	45	70	107	75	(D)	(D)	392
United States ..	405	335	470	522	(X)	230	95	2,057

(D) Withheld to avoid disclosing data for individual operations.

(X) Not applicable.

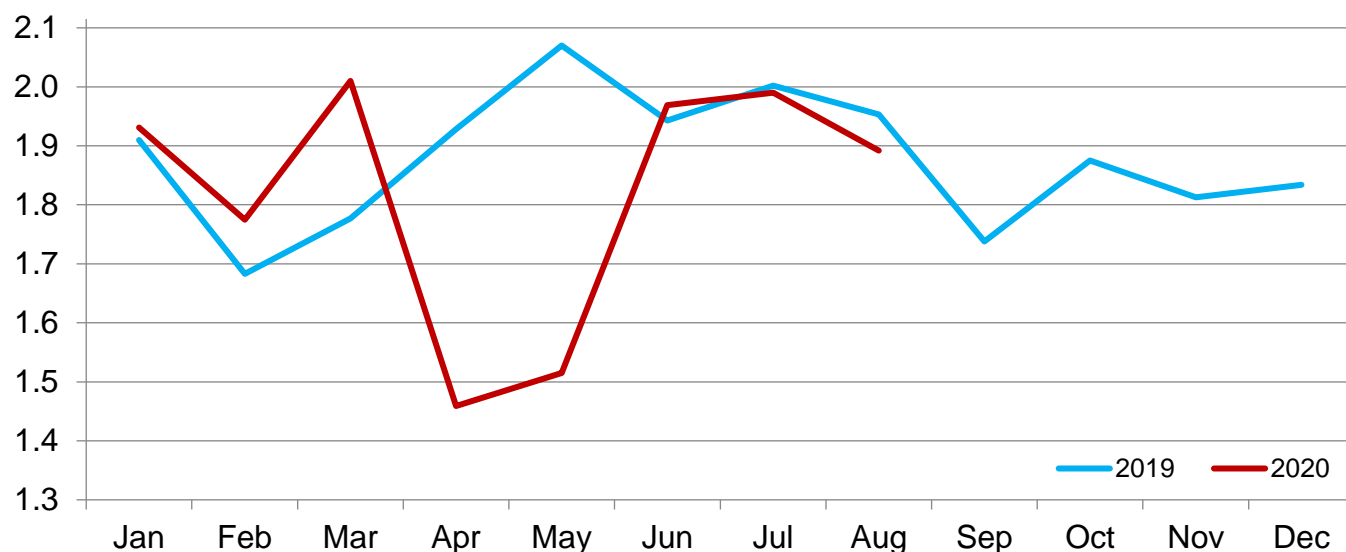
¹ The 900 pounds and greater weight group is the sum of 900-999 pounds and 1,000 pounds and greater weight groups.

Cattle Marketed on 1,000+ Capacity Feedlots by Month – States and United States: 2019 and 2020

State	During August 2019	During July 2020	During August 2020		
			Marketings	Percent of previous year	Percent of previous month
			(1,000 head)	(percent)	(percent)
Arizona	35	23	19	54	83
California	55	53	54	98	102
Colorado	205	160	155	76	97
Idaho	53	52	45	85	87
Iowa	69	70	83	120	119
Kansas	430	490	470	109	96
Minnesota	23	15	21	91	140
Nebraska	460	500	435	95	87
Oklahoma	49	50	52	106	104
South Dakota	34	24	34	100	142
Texas	450	470	430	96	91
Washington	47	32	44	94	138
Other States	43	51	50	116	98
United States	1,953	1,990	1,892	97	95

Cattle Marketed on 1,000+ Capacity Feedlots – United States

Million head



Cattle Other Disappearance on 1,000+ Capacity Feedlots by Month – States and United States: 2019 and 2020

State	During August 2019 (1,000 head)	During July 2020 (1,000 head)	During August 2020		
			Other disappearance (1,000 head)	Percent of previous year (percent)	Percent of previous month (percent)
Arizona	1	1	1	100	100
California	6	6	8	133	133
Colorado	5	5	5	100	100
Idaho	1	1	1	100	100
Iowa	2	3	2	100	67
Kansas	10	10	10	100	100
Minnesota	1	1	1	100	100
Nebraska	15	10	10	67	100
Oklahoma	2	1	1	50	100
South Dakota	1	1	3	300	300
Texas	15	15	10	67	67
Washington	1	1	1	100	100
Other States	1	2	2	200	100
United States	61	57	55	90	96

Terms and Definitions of Cattle on Feed Estimates

Cattle on feed are steers and heifers being fed a ration of grain, silage, hay and/or protein supplement for slaughter market that are expected to produce a carcass that will grade select or better. It excludes cattle being "backgrounded only" for later sale as feeders or later placement in another feedlot.

Placements are steers and heifers put into a feedlot, fed a ration which will produce a carcass that will grade select or better, and are intended for the slaughter market.

Marketings are steers and heifers shipped out of feedlots to a slaughter market.

Other disappearance includes death loss, movement from feedlots to pasture, and shipments to other feedlots for further feeding.

Statistical Methodology

Survey Procedures: During January and July all known feedlots in the United States with capacity of 1,000 or more head are surveyed to provide data for cattle on feed estimates. During the other months, all known feedlots from 16 States are surveyed. The 16 States account for approximately 98 percent of the cattle on feed in feedlots with capacity of 1,000 or more head. Individual State estimates are published monthly for 12 of the 16 States. Data collected from the remaining 4 States are used to establish the "Other States" estimates. These 4 States include Illinois, New Mexico, Oregon, and Wyoming. The "Other States" category represents all cattle on feed with a capacity of 1,000 or more head for the rest of the United States.

Estimating Procedures: These cattle on feed estimates were prepared by the Agricultural Statistics Board after reviewing recommendations and analysis submitted by Regional Field Offices. Regional and State survey data were reviewed for reasonableness with each other and with estimates from the previous month when establishing the current estimates.

Revision Policy: Revisions to previous estimates are made to improve month to month relationships. Estimates for the previous month are subject to revision in all States each month when current estimates are made. In February, all monthly estimates for the previous year, and the number of feedlots and annual marketings from two years ago are reviewed and subject to revisions. The reviews are primarily based on slaughter data, state check-off or brand data, and any other data that may have been received after the original estimate was made. Estimates will also be reviewed after data from the *Census of Agriculture* are available. No revisions will be made after that date and estimates become final.

Reliability: Since all 1,000+ capacity cattle on feed operators in every State are not included in the monthly survey, survey estimates are subject to sampling variability. Survey results are also subject to non-sampling errors such as omissions, duplications, and mistakes in reporting, recording, and processing the data. The effects of these errors cannot be measured directly. They are minimized through rigid quality controls in the data collection process and through a careful review of all reported data for consistency and reasonableness.

To assist users in evaluating the reliability of estimates in this report, the "**Root Mean Square Error**" is shown for selected items in the table on the following page. The "Root Mean Square Error" is a statistical measure based on past performance and is computed using the differences between first and latest estimates. The "Root Mean Square Error" for cattle on feed inventory estimates over the past 24 months is 0.1 percent. This means that chances are 2 out of 3 that the final estimate will not be above or below the current estimate of 11.4 million head by more than 0.1 percent. Chances are 9 out of 10 that the difference will not exceed 0.1 percent.

The table on the following page shows a 24 month record of the range of differences between first and latest estimates for selected items. Using estimates of number on feed as an example, changes between the first estimate and the latest estimate during the past 24 months have averaged 4,000 head, ranging from 0 to 15,000 head. During this period the initial estimate has been above the latest estimate 8 times and has been below the latest estimate 2 times. This does not imply that the initial estimate is likely to understate or overstate final inventory.

Reliability of Monthly Cattle on Feed Estimates

[Based on data for the past 24 months]

Item	Root mean square error	90 percent confidence level	Difference between first and latest estimate				
			Average	Smallest	Largest	Months	
						Below latest	Above latest
	(percent)	(percent)	(1,000)	(1,000)	(1,000)	(number)	(number)
On feed	0.1	0.1	4	0	15	2	8
Placements	0.3	0.5	3	0	15	6	3
Marketings	0.2	0.4	1	0	15	1	1

Information Contacts

Listed below are the commodity specialists in the Livestock Branch of the National Agricultural Statistics Service to contact for additional information. E-mail inquiries may be sent to nass@usda.gov.

Travis Averill, Chief, Livestock Branch	(202) 692-0069
Scott Hollis, Head, Livestock Section	(202) 690-2424
Sherry Bertramsen – Livestock Slaughter	(202) 690-8632
Holly Brenize – Sheep and Goats	(202) 720-0585
Ryan Cowen – Cattle, Cattle on Feed	(202) 720-3040
Mike Miller – Milk Production and Milk Cows	(202) 720-3278
Suzanne Richards – Dairy Products	(202) 720-4448
Seth Riggins – Hogs and Pigs	(202) 720-3106

Access to NASS Reports

For your convenience, you may access NASS reports and products the following ways:

- All reports are available electronically, at no cost, on the NASS web site: www.nass.usda.gov
- Both national and state specific reports are available via a free e-mail subscription. To set-up this free subscription, visit www.nass.usda.gov and click on “National” or “State” in upper right corner above “search” box to create an account and select the reports you would like to receive.
- Cornell’s Mann Library has launched a new website housing NASS’s and other agencies archived reports. The new website, <https://usda.library.cornell.edu>. All email subscriptions containing reports will be sent from the new website, <https://usda.library.cornell.edu>. To continue receiving the reports via e-mail, you will have to go to the new website, create a new account and re-subscribe to the reports. If you need instructions to set up an account or subscribe, they are located at: <https://usda.library.cornell.edu/help>. You should whitelist notifications@usda-esmis.library.cornell.edu in your email client to avoid the emails going into spam/junk folders.

For more information on NASS surveys and reports, call the NASS Agricultural Statistics Hotline at (800) 727-9540, 7:30 a.m. to 4:00 p.m. ET, or e-mail: nass@usda.gov.

The U.S. Department of Agriculture (USDA) prohibits discrimination against its customers, employees, and applicants for employment on the basis of race, color, national origin, age, disability, sex, gender identity, religion, reprisal, and where applicable, political beliefs, marital status, familial or parental status, sexual orientation, or all or part of an individual's income is derived from any public assistance program, or protected genetic information in employment or in any program or activity conducted or funded by the Department. (Not all prohibited bases will apply to all programs and/or employment activities.)

If you wish to file a Civil Rights program complaint of discrimination, complete the [USDA Program Discrimination Complaint Form](#) (PDF), found online at www.ascr.usda.gov/filing-program-discrimination-complaint-usda-customer, or at any USDA office, or call (866) 632-9992 to request the form. You may also write a letter containing all of the information requested in the form. Send your completed complaint form or letter to us by mail at U.S. Department of Agriculture, Director, Office of Adjudication, 1400 Independence Avenue, S.W., Washington, D.C. 20250-9410, by fax (202) 690-7442 or email at program.intake@usda.gov.



USDA NASS Data Users' Meeting

Virtual Meeting
Wednesday, October 28, 2020

USDA's National Agricultural Statistics Service will hold a virtual meeting for users of U.S. domestic and international agriculture data. NASS is organizing the 2020 Fall Data Users' Meeting in cooperation with five other USDA agencies – Agricultural Marketing Service, Economic Research Service, Farm Service Agency, Foreign Agricultural Service, and World Agricultural Outlook Board – and the Census Bureau's Foreign Trade Division. Agency representatives will answer questions and welcome comments and input from data users. Registration details will be coming soon.