



Released October 23, 2020, by the National Agricultural Statistics Service (NASS), Agricultural Statistics Board, United States Department of Agriculture (USDA).

United States Cattle on Feed Up 4 Percent

Cattle and calves on feed for the slaughter market in the United States for feedlots with capacity of 1,000 or more head totaled 11.7 million head on October 1, 2020. The inventory was 4 percent above October 1, 2019. This is the highest October 1 inventory since the series began in 1996. The inventory included 7.31 million steers and steer calves, up 6 percent from the previous year. This group accounted for 62 percent of the total inventory. Heifers and heifer calves accounted for 4.41 million head, down slightly from 2019.

Placements in feedlots during September totaled 2.23 million head, 6 percent above 2019. Net placements were 2.17 million head. During September, placements of cattle and calves weighing less than 600 pounds were 445,000 head, 600-699 pounds were 360,000 head, 700-799 pounds were 500,000 head, 800-899 pounds were 517,000 head, 900-999 pounds were 300,000 head, and 1,000 pounds and greater were 105,000 head.

Marketings of fed cattle during September totaled 1.85 million head, 6 percent above 2019.

Other disappearance totaled 58,000 head during September, 2 percent below 2019.

Cattle on Feed Inventory, Placements, Marketings, and Other Disappearance on 1,000+ Capacity Feedlots – United States: October 1, 2019 and 2020

Item	2019	2020	Percent of previous year	
	(1,000 head)	(1,000 head)	(percent)	
On feed September 1	10,982	11,394	104	
Placed on feed during September	2,103	2,227	106	
Fed cattle marketed during September	1,738	1,846	106	
Other disappearance during September	59	58	98	
On feed October 1	11,288	11,717	104	

Cattle on Feed Inventory, Placements, Marketings, and Other Disappearance on 1,000+ Capacity Feedlots – United States: September 1, 2019 and 2020

Item	2019	2020	Percent of previous year	
	(1,000 head)	(1,000 head)	(percent)	
On feed August 1	11,112	11,284	102	
Placed on feed during August	1,884	2,057	109	
Fed cattle marketed during August	1,953	1,892	97	
Other disappearance during August	61	55	90	
On feed September 1	10,982	11,394	104	

Cattle on Feed by Class on 1,000+ Capacity Feedlots – United States: October 1, 2019 and 2020

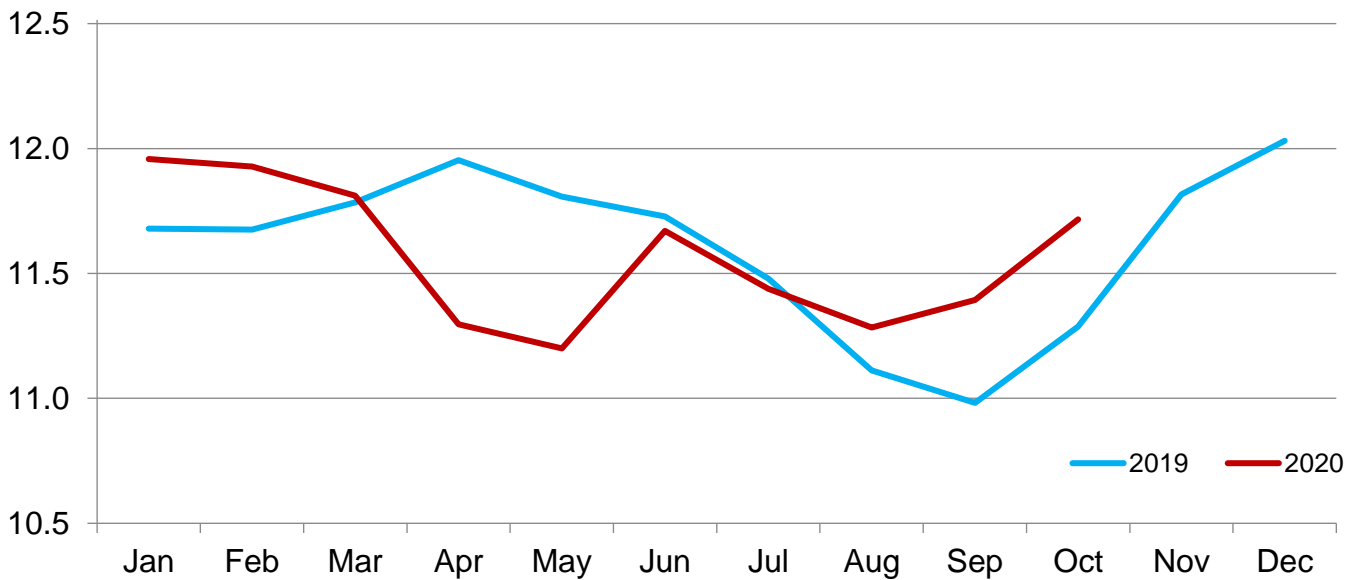
Item	2019	2020	Percent of	
			previous year	inventory
	(1,000 head)	(1,000 head)	(percent)	(percent)
Class on feed October 1				
Steers and steer calves	6,868	7,312	106	62
Heifers and heifer calves	4,420	4,405	100	38

Cattle on Feed Inventory on 1,000+ Capacity Feedlots by Month – States and United States: 2019 and 2020

State	October 1, 2019	September 1, 2020	October 1, 2020		
			Inventory	Percent of previous year	Percent of previous month
	(1,000 head)	(1,000 head)	(1,000 head)	(percent)	(percent)
Arizona	253	264	257	102	97
California	525	535	545	104	102
Colorado	990	1,040	1,110	112	107
Idaho	275	255	270	98	106
Iowa	640	610	610	95	100
Kansas	2,380	2,470	2,540	107	103
Minnesota	105	110	105	100	95
Nebraska	2,270	2,280	2,410	106	106
Oklahoma	315	310	315	100	102
South Dakota	210	190	190	90	100
Texas	2,790	2,850	2,870	103	101
Washington	225	220	220	98	100
Other States	310	260	275	89	106
United States	11,288	11,394	11,717	104	103

Cattle on Feed Inventory on 1,000+ Capacity Feedlots – United States

Million head

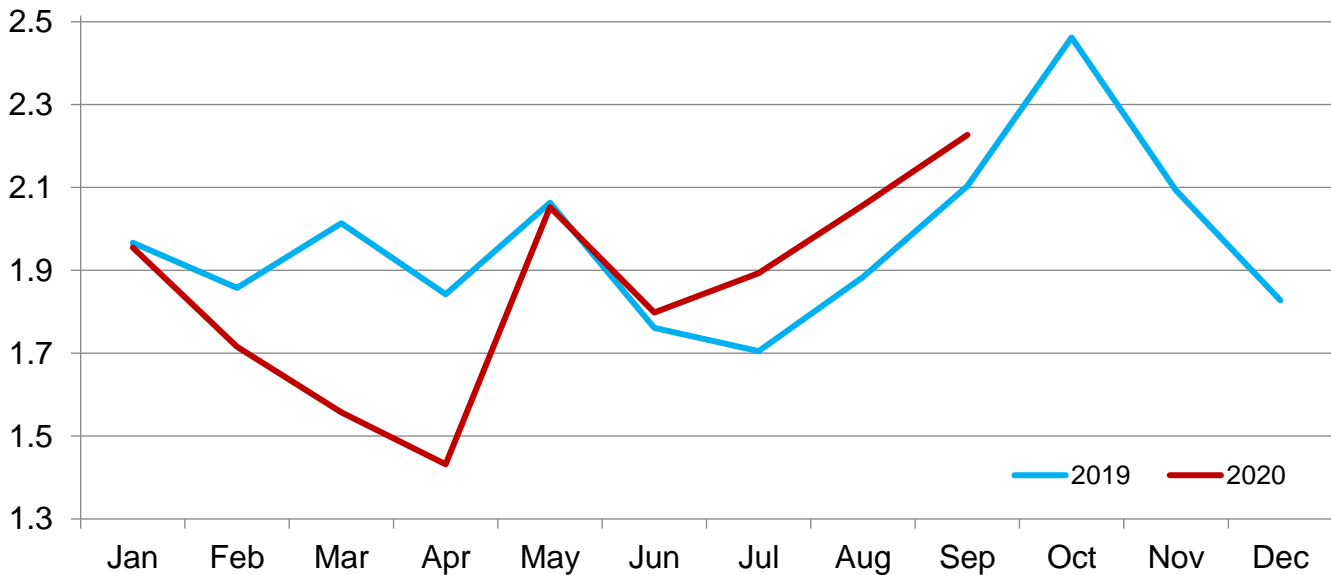


Cattle Placed on Feed on 1,000+ Capacity Feedlots by Month – States and United States: 2019 and 2020

State	During September 2019 (1,000 head)	During August 2020 (1,000 head)	During September 2020		
			Placements (1,000 head)	Percent of previous year (percent)	Percent of previous month (percent)
Arizona	16	15	16	100	107
California	50	52	68	136	131
Colorado	240	180	245	102	136
Idaho	58	41	54	93	132
Iowa	82	75	72	88	96
Kansas	435	540	490	113	91
Minnesota	22	12	19	86	158
Nebraska	530	505	600	113	119
Oklahoma	46	58	62	135	107
South Dakota	53	47	45	85	96
Texas	465	440	450	97	102
Washington	46	40	45	98	113
Other States	60	52	61	102	117
United States	2,103	2,057	2,227	106	108

Cattle Placed on 1,000+ Capacity Feedlots – United States

Million head



Cattle Placed on Feed by Weight Group on 1,000+ Capacity Feedlots and Month – States and United States: 2019 and 2020

State	During September 2019							
	Under 600 lbs	600-699 lbs	700-799 lbs	800-899 lbs	900+ lbs ¹	900-999 lbs	1,000+ lbs	Total
	(1,000 head)	(1,000 head)	(1,000 head)	(1,000 head)	(1,000 head)	(1,000 head)	(1,000 head)	(1,000 head)
Colorado	30	25	50	70	65	(D)	(D)	240
Kansas	60	90	130	100	55	(D)	(D)	435
Nebraska	50	60	95	150	175	(D)	(D)	530
Texas	170	130	105	50	10	(D)	(D)	465
Other States ...	120	50	80	105	78	(D)	(D)	433
United States ..	430	355	460	475	(X)	273	110	2,103

State	During August 2020							
	Under 600 lbs	600-699 lbs	700-799 lbs	800-899 lbs	900+ lbs ¹	900-999 lbs	1,000+ lbs	Total
	(1,000 head)	(1,000 head)	(1,000 head)	(1,000 head)	(1,000 head)	(1,000 head)	(1,000 head)	(1,000 head)
Colorado	25	30	35	50	40	(D)	(D)	180
Kansas	60	100	170	150	60	(D)	(D)	540
Nebraska	45	50	105	165	140	(D)	(D)	505
Texas	180	110	90	50	10	(D)	(D)	440
Other States ...	95	45	70	107	75	(D)	(D)	392
United States ..	405	335	470	522	(X)	230	95	2,057

State	During September 2020							
	Under 600 lbs	600-699 lbs	700-799 lbs	800-899 lbs	900+ lbs ¹	900-999 lbs	1,000+ lbs	Total
	(1,000 head)	(1,000 head)	(1,000 head)	(1,000 head)	(1,000 head)	(1,000 head)	(1,000 head)	(1,000 head)
Colorado	30	30	55	65	65	(D)	(D)	245
Kansas	65	95	155	115	60	(D)	(D)	490
Nebraska	55	60	115	180	190	(D)	(D)	600
Texas	175	125	95	45	10	(D)	(D)	450
Other States ...	120	50	80	112	80	(D)	(D)	442
United States ..	445	360	500	517	(X)	300	105	2,227

(D) Withheld to avoid disclosing data for individual operations.

(X) Not applicable.

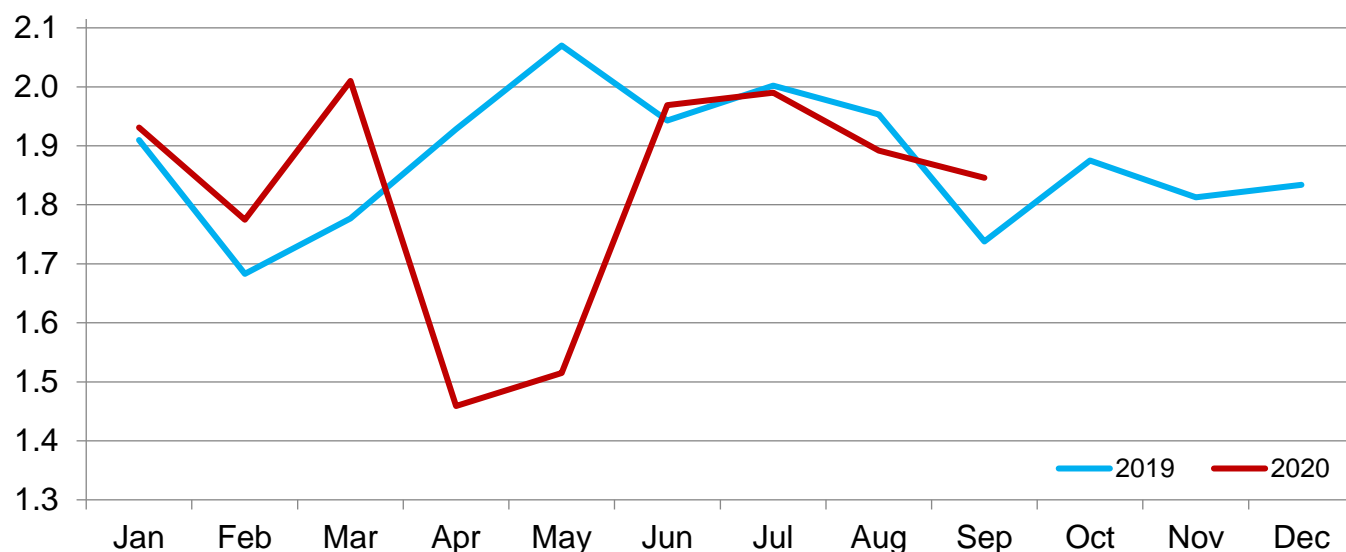
¹ The 900 pounds and greater weight group is the sum of 900-999 pounds and 1,000 pounds and greater weight groups.

Cattle Marketed on 1,000+ Capacity Feedlots by Month – States and United States: 2019 and 2020

State	During September 2019	During August 2020	During September 2020		
			Marketings	Percent of previous year	Percent of previous month
			(1,000 head)	(percent)	(percent)
Arizona	19	19	22	116	116
California	50	54	49	98	91
Colorado	175	155	170	97	110
Idaho	50	45	38	76	84
Iowa	70	83	70	100	84
Kansas	385	470	410	106	87
Minnesota	16	21	23	144	110
Nebraska	410	435	460	112	106
Oklahoma	44	52	56	127	108
South Dakota	46	34	44	96	129
Texas	390	430	415	106	97
Washington	40	44	44	110	100
Other States	43	50	45	105	90
United States	1,738	1,892	1,846	106	98

Cattle Marketed on 1,000+ Capacity Feedlots – United States

Million head



Cattle Other Disappearance on 1,000+ Capacity Feedlots by Month – States and United States: 2019 and 2020

State	During September 2019 (1,000 head)	During August 2020 (1,000 head)	During September 2020		
			Other disappearance (1,000 head)	Percent of previous year (percent)	Percent of previous month (percent)
Arizona	1	1	1	100	100
California	5	8	9	180	113
Colorado	5	5	5	100	100
Idaho	3	1	1	33	100
Iowa	2	2	2	100	100
Kansas	10	10	10	100	100
Minnesota	1	1	1	100	100
Nebraska	10	10	10	100	100
Oklahoma	2	1	1	50	100
South Dakota	2	3	1	50	33
Texas	15	10	15	100	150
Washington	1	1	1	100	100
Other States	2	2	1	50	50
United States	59	55	58	98	105

Cattle on Feed by Class on 1,000+ Capacity Feedlots by Quarter – States and United States: 2019 and 2020

State	Steers and steer calves			Heifers and heifer calves		
	Oct 1, 2019	Jul 1, 2020	Oct 1, 2020	Oct 1, 2019	Jul 1, 2020	Oct 1, 2020
	(1,000 Head)	(1,000 Head)	(1,000 Head)	(1,000 Head)	(1,000 Head)	(1,000 Head)
Arizona	248	268	252	5	5	5
California	455	465	465	70	80	80
Colorado	520	560	645	470	460	465
Idaho	180	170	150	95	110	120
Iowa	440	465	460	200	165	150
Kansas	1,270	1,280	1,380	1,110	1,110	1,160
Minnesota	90	105	90	15	20	15
Nebraska	1,360	1,380	1,500	910	880	910
Oklahoma	175	160	175	140	155	140
South Dakota	120	115	115	90	70	75
Texas	1,690	1,750	1,780	1,100	1,170	1,090
Washington	130	135	120	95	90	100
Other States	190	180	180	120	90	95
United States	6,868	7,033	7,312	4,420	4,405	4,405

Terms and Definitions of Cattle on Feed Estimates

Cattle on feed are steers and heifers being fed a ration of grain, silage, hay and/or protein supplement for slaughter market that are expected to produce a carcass that will grade select or better. It excludes cattle being "backgrounded only" for later sale as feeders or later placement in another feedlot.

Placements are steers and heifers put into a feedlot, fed a ration which will produce a carcass that will grade select or better, and are intended for the slaughter market.

Marketings are steers and heifers shipped out of feedlots to a slaughter market.

Other disappearance includes death loss, movement from feedlots to pasture, and shipments to other feedlots for further feeding.

Statistical Methodology

Survey Procedures: During January and July all known feedlots in the United States with capacity of 1,000 or more head are surveyed to provide data for cattle on feed estimates. During the other months, all known feedlots from 16 States are surveyed. The 16 States account for approximately 98 percent of the cattle on feed in feedlots with capacity of 1,000 or more head. Individual State estimates are published monthly for 12 of the 16 States. Data collected from the remaining 4 States are used to establish the "Other States" estimates. These 4 States include Illinois, New Mexico, Oregon, and Wyoming. The "Other States" category represents all cattle on feed with a capacity of 1,000 or more head for the rest of the United States.

Estimating Procedures: These cattle on feed estimates were prepared by the Agricultural Statistics Board after reviewing recommendations and analysis submitted by Regional Field Offices. Regional and State survey data were reviewed for reasonableness with each other and with estimates from the previous month when establishing the current estimates.

Revision Policy: Revisions to previous estimates are made to improve month to month relationships. Estimates for the previous month are subject to revision in all States each month when current estimates are made. In February, all monthly estimates for the previous year, and the number of feedlots and annual marketings from two years ago are reviewed and subject to revisions. The reviews are primarily based on slaughter data, state check-off or brand data, and any other data that may have been received after the original estimate was made. Estimates will also be reviewed after data from the *Census of Agriculture* are available. No revisions will be made after that date and estimates become final.

Reliability: Since all 1,000+ capacity cattle on feed operators in every State are not included in the monthly survey, survey estimates are subject to sampling variability. Survey results are also subject to non-sampling errors such as omissions, duplications, and mistakes in reporting, recording, and processing the data. The effects of these errors cannot be measured directly. They are minimized through rigid quality controls in the data collection process and through a careful review of all reported data for consistency and reasonableness.

To assist users in evaluating the reliability of estimates in this report, the "**Root Mean Square Error**" is shown for selected items in the table on the following page. The "Root Mean Square Error" is a statistical measure based on past performance and is computed using the differences between first and latest estimates. The "Root Mean Square Error" for cattle on feed inventory estimates over the past 24 months is 0.1 percent. This means that chances are 2 out of 3 that the final estimate will not be above or below the current estimate of 11.7 million head by more than 0.1 percent. Chances are 9 out of 10 that the difference will not exceed 0.1 percent.

The table on the following page shows a 24 month record of the range of differences between first and latest estimates for selected items. Using estimates of number on feed as an example, changes between the first estimate and the latest estimate during the past 24 months have averaged 4,000 head, ranging from 0 to 15,000 head. During this period the initial estimate has been above the latest estimate 8 times and has been below the latest estimate 2 times. This does not imply that the initial estimate is likely to understate or overstate final inventory.

Reliability of Monthly Cattle on Feed Estimates

[Based on data for the past 24 months]

Item	Root mean square error	90 percent confidence level	Difference between first and latest estimate				
			Average	Smallest	Largest	Months	
						Below latest	Above latest
	(percent)	(percent)	(1,000)	(1,000)	(1,000)	(number)	(number)
On feed	0.1	0.1	4	0	15	2	8
Placements	0.3	0.5	3	0	15	6	3
Marketings	0.2	0.4	1	0	15	1	1

Information Contacts

Listed below are the commodity specialists in the Livestock Branch of the National Agricultural Statistics Service to contact for additional information. E-mail inquiries may be sent to nass@usda.gov.

Travis Averill, Chief, Livestock Branch	(202) 692-0069
Scott Hollis, Head, Livestock Section	(202) 690-2424
Sherry Bertramsen – Livestock Slaughter	(202) 690-8632
Holly Brenize – Sheep and Goats	(202) 720-0585
Ryan Cowen – Cattle, Cattle on Feed	(202) 720-3040
Mike Miller – Milk Production and Milk Cows	(202) 720-3278
Suzanne Richards – Dairy Products	(202) 720-4448
Seth Riggins – Hogs and Pigs	(202) 720-3106

Access to NASS Reports

For your convenience, you may access NASS reports and products the following ways:

- All reports are available electronically, at no cost, on the NASS web site: www.nass.usda.gov
- Both national and state specific reports are available via a free e-mail subscription. To set-up this free subscription, visit www.nass.usda.gov and click on “National” or “State” in upper right corner above “search” box to create an account and select the reports you would like to receive.
- Cornell’s Mann Library has launched a new website housing NASS’s and other agencies archived reports. The new website, <https://usda.library.cornell.edu>. All email subscriptions containing reports will be sent from the new website, <https://usda.library.cornell.edu>. To continue receiving the reports via e-mail, you will have to go to the new website, create a new account and re-subscribe to the reports. If you need instructions to set up an account or subscribe, they are located at: <https://usda.library.cornell.edu/help>. You should whitelist notifications@usda-esmis.library.cornell.edu in your email client to avoid the emails going into spam/junk folders.

For more information on NASS surveys and reports, call the NASS Agricultural Statistics Hotline at (800) 727-9540, 7:30 a.m. to 4:00 p.m. ET, or e-mail: nass@usda.gov.

The U.S. Department of Agriculture (USDA) prohibits discrimination against its customers, employees, and applicants for employment on the basis of race, color, national origin, age, disability, sex, gender identity, religion, reprisal, and where applicable, political beliefs, marital status, familial or parental status, sexual orientation, or all or part of an individual's income is derived from any public assistance program, or protected genetic information in employment or in any program or activity conducted or funded by the Department. (Not all prohibited bases will apply to all programs and/or employment activities.)

If you wish to file a Civil Rights program complaint of discrimination, complete the [USDA Program Discrimination Complaint Form](#) (PDF), found online at www.ascr.usda.gov/filing-program-discrimination-complaint-usda-customer, or at any USDA office, or call (866) 632-9992 to request the form. You may also write a letter containing all of the information requested in the form. Send your completed complaint form or letter to us by mail at U.S. Department of Agriculture, Director, Office of Adjudication, 1400 Independence Avenue, S.W., Washington, D.C. 20250-9410, by fax (202) 690-7442 or email at program.intake@usda.gov.



USDA NASS Data Users' Meeting

Virtual Meeting
Wednesday, October 28, 2020

USDA's National Agricultural Statistics Service will hold a virtual meeting for users of U.S. domestic and international agriculture data. NASS is organizing the 2020 Fall Data Users' Meeting in cooperation with five other USDA agencies – Agricultural Marketing Service, Economic Research Service, Farm Service Agency, Foreign Agricultural Service, and World Agricultural Outlook Board – and the Census Bureau's Foreign Trade Division. Agency representatives will answer questions and welcome comments and input from data users.

For registration details or additional information about the Data Users' Meeting, see the meeting page on the NASS website (https://www.nass.usda.gov/Education_and_Outreach/Meeting/index.php). Contact Patricia Snipe (NASS) at 202-720-2248 or patricia.snipe@usda.gov for information.