



Cattle on Feed

ISSN: 1948-9080

Released December 20, 2019, by the National Agricultural Statistics Service (NASS), Agricultural Statistics Board, United States Department of Agriculture (USDA).

United States Cattle on Feed Up 2 Percent

Cattle and calves on feed for the slaughter market in the United States for feedlots with capacity of 1,000 or more head totaled 12.0 million head on December 1, 2019. The inventory was 2 percent above December 1, 2018.

Placements in feedlots during November totaled 2.09 million head, 5 percent above 2018. Net placements were 2.03 million head. During November, placements of cattle and calves weighing less than 600 pounds were 620,000 head, 600-699 pounds were 500,000 head, 700-799 pounds were 423,000 head, 800-899 pounds were 310,000 head, 900-999 pounds were 130,000 head, and 1,000 pounds and greater were 110,000 head.

Marketings of fed cattle during November totaled 1.81 million head, 3 percent below 2018.

Other disappearance totaled 65,000 head during November, 19 percent below 2018.

Cattle on Feed Inventory, Placements, Marketings, and Other Disappearance on 1,000+ Capacity Feedlots – United States: December 1, 2018 and 2019

Item	Number		Percent of previous year
	2018	2019	
	(1,000 head)	(1,000 head)	(percent)
On feed November 1	11,692	11,816	101
Placed on feed during November	1,996	2,093	105
Fed cattle marketed during November	1,869	1,813	97
Other disappearance during November	80	65	81
On feed December 1	11,739	12,031	102

Cattle on Feed Inventory, Placements, Marketings, and Other Disappearance on 1,000+ Capacity Feedlots – United States: November 1, 2018 and 2019

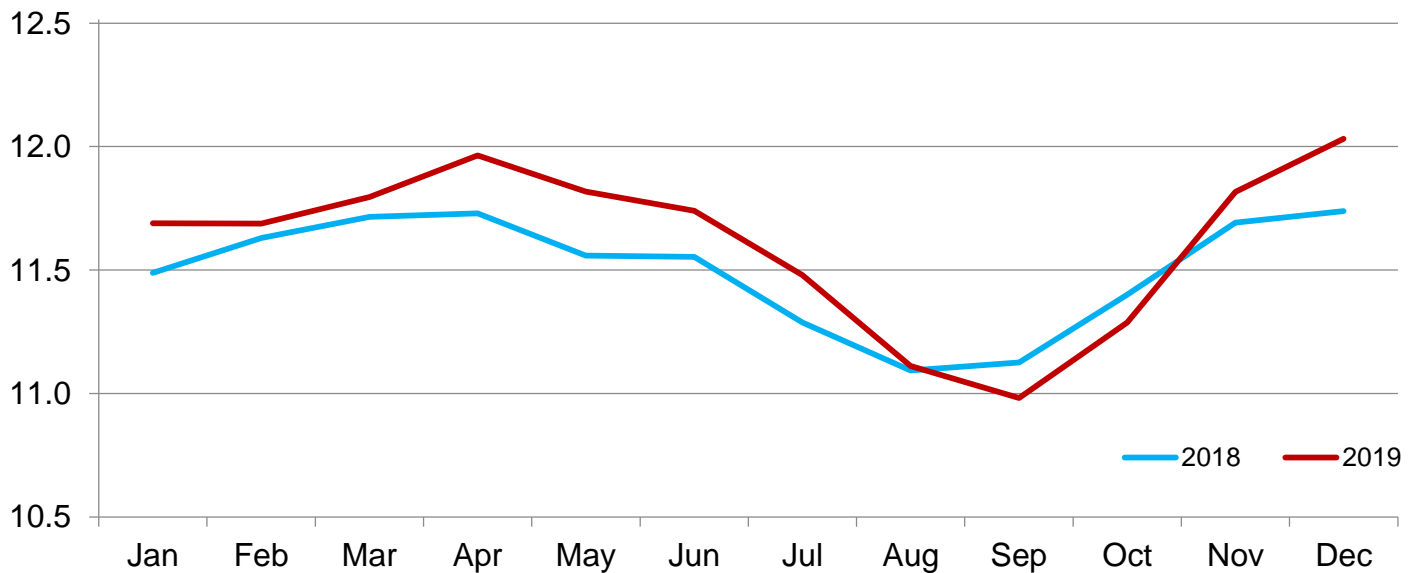
Item	Number		Percent of previous year
	2018	2019	
	(1,000 head)	(1,000 head)	(percent)
On feed October 1	11,400	11,288	99
Placed on feed during October	2,248	2,462	110
Fed cattle marketed during October	1,887	1,875	99
Other disappearance during October	69	59	86
On feed November 1	11,692	11,816	101

Cattle on Feed Inventory on 1,000+ Capacity Feedlots by Month – States and United States: 2018 and 2019

State	December 1, 2018	November 1, 2019	December 1, 2019		
			Number	Percent of previous year	Percent of previous month
	(1,000 head)	(1,000 head)	(1,000 head)	(percent)	(percent)
Arizona	289	256	256	89	100
California	535	540	550	103	102
Colorado	1,010	1,070	1,100	109	103
Idaho	285	290	300	105	103
Iowa	700	660	690	99	105
Kansas	2,360	2,420	2,430	103	100
Minnesota	160	130	140	88	108
Nebraska	2,600	2,450	2,480	95	101
Oklahoma	325	325	325	100	100
South Dakota	240	240	250	104	104
Texas	2,680	2,870	2,930	109	102
Washington	235	235	240	102	102
Other States	320	330	340	106	103
United States	11,739	11,816	12,031	102	102

Cattle on Feed Inventory on 1,000+ Capacity Feedlots – United States

Million head

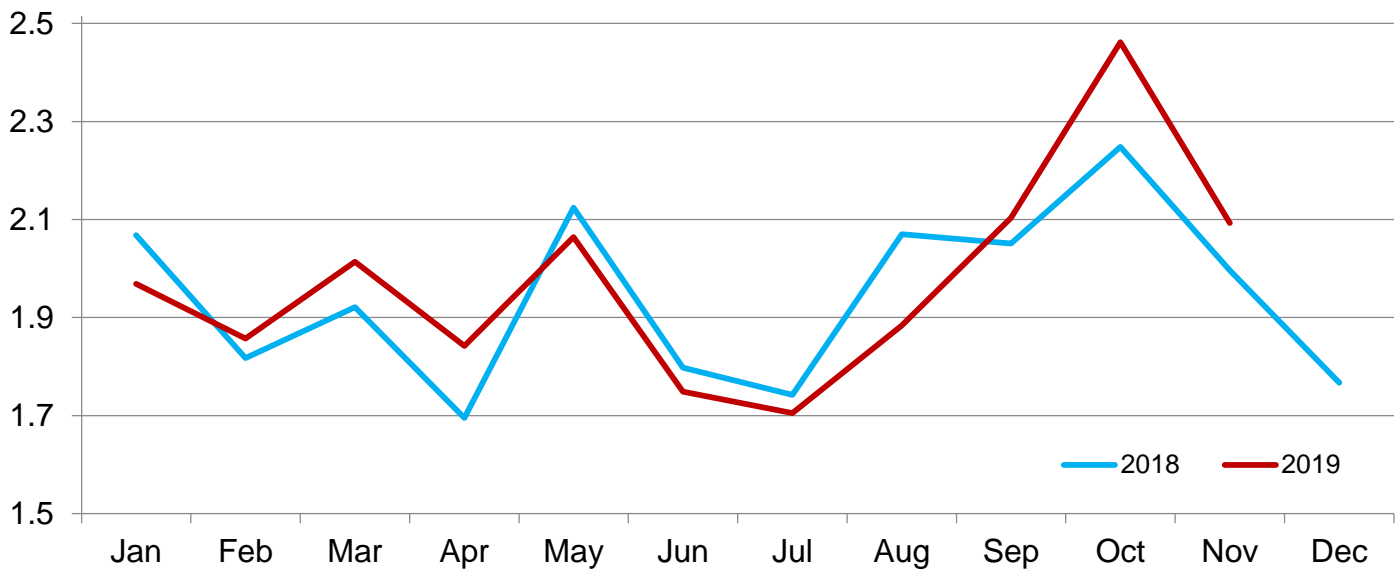


Cattle Placed on Feed on 1,000+ Capacity Feedlots by Month – States and United States: 2018 and 2019

State	During November 2018 (1,000 head)	During October 2019 (1,000 head)	During November 2019		
			Number (1,000 head)	Percent of previous year (percent)	Percent of previous month (percent)
Arizona	30	25	27	90	108
California	72	75	64	89	85
Colorado	140	240	185	132	77
Idaho	59	63	56	95	89
Iowa	106	114	110	104	96
Kansas	400	450	415	104	92
Minnesota	25	39	25	100	64
Nebraska	520	670	520	100	78
Oklahoma	52	61	58	112	95
South Dakota	47	77	75	160	97
Texas	450	530	465	103	88
Washington	40	51	42	105	82
Other States	55	67	51	93	76
United States	1,996	2,462	2,093	105	85

Cattle Placed on 1,000+ Capacity Feedlots – United States

Million head



Cattle Placed on Feed by Weight Group on 1,000+ Capacity Feedlots and Month – States and United States: 2018 and 2019

State	During November 2018							
	Under 600 lbs	600-699 lbs	700-799 lbs	800-899 lbs	900+ lbs ¹	900-999 lbs	1,000+ lbs	Total
	(1,000 head)	(1,000 head)	(1,000 head)	(1,000 head)	(1,000 head)	(1,000 head)	(1,000 head)	(1,000 head)
Colorado	45	40	25	20	10	(D)	(D)	140
Kansas	55	100	120	80	45	(D)	(D)	400
Nebraska	100	125	95	90	110	(D)	(D)	520
Texas	170	110	105	55	10	(D)	(D)	450
Other States ...	180	120	71	70	45	(D)	(D)	486
United States ..	550	495	416	315	(X)	115	105	1,996
State	During October 2019							
	Under 600 lbs	600-699 lbs	700-799 lbs	800-899 lbs	900+ lbs ¹	900-999 lbs	1,000+ lbs	Total
	(1,000 head)	(1,000 head)	(1,000 head)	(1,000 head)	(1,000 head)	(1,000 head)	(1,000 head)	(1,000 head)
Colorado	50	45	40	55	50	(D)	(D)	240
Kansas	65	100	140	95	50	(D)	(D)	450
Nebraska	140	130	110	140	150	(D)	(D)	670
Texas	170	135	140	65	20	(D)	(D)	530
Other States ...	175	130	87	105	75	(D)	(D)	572
United States ..	600	540	517	460	(X)	230	115	2,462
State	During November 2019							
	Under 600 lbs	600-699 lbs	700-799 lbs	800-899 lbs	900+ lbs ¹	900-999 lbs	1,000+ lbs	Total
	(1,000 head)	(1,000 head)	(1,000 head)	(1,000 head)	(1,000 head)	(1,000 head)	(1,000 head)	(1,000 head)
Colorado	60	40	30	30	25	(D)	(D)	185
Kansas	60	105	125	80	45	(D)	(D)	415
Nebraska	100	120	100	90	110	(D)	(D)	520
Texas	200	120	85	45	15	(D)	(D)	465
Other States ...	200	115	83	65	45	(D)	(D)	508
United States ..	620	500	423	310	(X)	130	110	2,093

(D) Withheld to avoid disclosing data for individual operations.

(X) Not applicable.

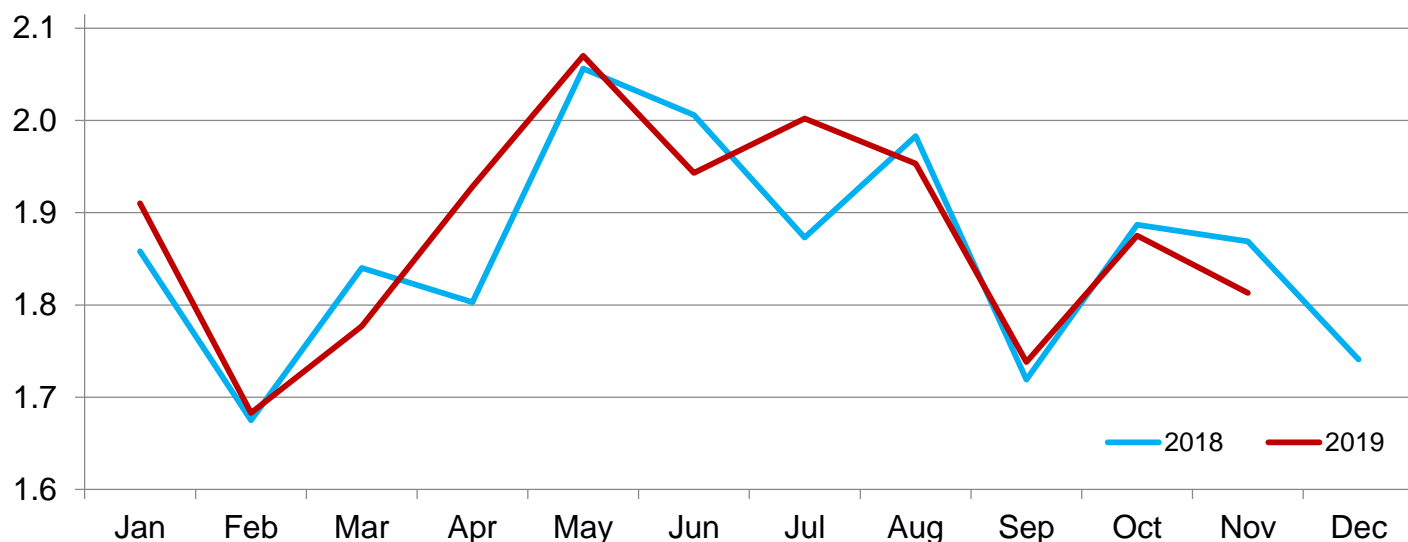
¹ The 900 pounds and greater weight group is the sum of 900-999 pounds and 1,000 pounds and greater weight groups.

Cattle Marketed on 1,000+ Capacity Feedlots by Month – States and United States: 2018 and 2019

State	During November 2018	During October 2019	During November 2019		
			Number	Percent of previous year	Percent of previous month
			(1,000 head)	(percent)	(percent)
Arizona	27	21	26	96	124
California	54	54	47	87	87
Colorado	145	155	150	103	97
Idaho	41	45	44	107	98
Iowa	104	92	76	73	83
Kansas	385	400	395	103	99
Minnesota	14	13	14	100	108
Nebraska	490	480	475	97	99
Oklahoma	50	50	57	114	114
South Dakota	44	45	64	145	142
Texas	430	435	390	91	90
Washington	34	40	35	103	88
Other States	51	45	40	78	89
United States	1,869	1,875	1,813	97	97

Cattle Marketed on 1,000+ Capacity Feedlots – United States

Million head



Cattle Other Disappearance on 1,000+ Capacity Feedlots by Month – States and United States: 2018 and 2019

State	During November 2018 (1,000 head)	During October 2019 (1,000 head)	During November 2019		
			Number (1,000 head)	Percent of previous year (percent)	Percent of previous month (percent)
Arizona	1	1	1	100	100
California	3	6	7	233	117
Colorado	5	5	5	100	100
Idaho	3	3	2	67	67
Iowa	2	2	4	200	200
Kansas	15	10	10	67	100
Minnesota	1	1	1	100	100
Nebraska	20	10	15	75	150
Oklahoma	2	1	1	50	100
South Dakota	3	2	1	33	50
Texas	20	15	15	75	100
Washington	1	1	2	200	200
Other States	4	2	1	25	50
United States	80	59	65	81	110

Terms and Definitions of Cattle on Feed Estimates

Cattle on feed are steers and heifers being fed a ration of grain, silage, hay and/or protein supplement for slaughter market that are expected to produce a carcass that will grade select or better. It excludes cattle being "backgrounded only" for later sale as feeders or later placement in another feedlot.

Placements are steers and heifers put into a feedlot, fed a ration which will produce a carcass that will grade select or better, and are intended for the slaughter market.

Marketings are steers and heifers shipped out of feedlots to a slaughter market.

Other disappearance includes death loss, movement from feedlots to pasture, and shipments to other feedlots for further feeding.

Statistical Methodology

Survey Procedures: During January and July all known feedlots in the United States with capacity of 1,000 or more head are surveyed to provide data for cattle on feed estimates. During the other months, all known feedlots from 16 States are surveyed. The 16 States account for approximately 98 percent of the cattle on feed in feedlots with capacity of 1,000 or more head. Individual State estimates are published monthly for 12 of the 16 States. Data collected from the remaining 4 States are used to establish the "Other States" estimates. These 4 States include Illinois, New Mexico, Oregon, and Wyoming. The "Other States" category represents all cattle on feed with a capacity of 1,000 or more head for the rest of the United States.

Estimating Procedures: These cattle on feed estimates were prepared by the Agricultural Statistics Board after reviewing recommendations and analysis submitted by Regional Field Offices. Regional and State survey data were reviewed for reasonableness with each other and with estimates from the previous month when establishing the current estimates.

Revision Policy: Revisions to previous estimates are made to improve month to month relationships. Estimates for the previous month are subject to revision in all States each month when current estimates are made. In February, all monthly estimates for the previous year, and the number of feedlots and annual marketings from two years ago are reviewed and subject to revisions. The reviews are primarily based on slaughter data, state check-off or brand data, and any other data that may have been received after the original estimate was made. Estimates will also be reviewed after data from the *Census of Agriculture* are available. No revisions will be made after that date and estimates become final.

Reliability: Since all 1,000+ capacity cattle on feed operators in every State are not included in the monthly survey, survey estimates are subject to sampling variability. Survey results are also subject to non-sampling errors such as omissions, duplications, and mistakes in reporting, recording, and processing the data. The effects of these errors cannot be measured directly. They are minimized through rigid quality controls in the data collection process and through a careful review of all reported data for consistency and reasonableness.

To assist users in evaluating the reliability of estimates in this report, the "**Root Mean Square Error**" is shown for selected items in the table on the following page. The "Root Mean Square Error" is a statistical measure based on past performance and is computed using the differences between first and latest estimates. The "Root Mean Square Error" for cattle on feed inventory estimates over the past 24 months is 0.0 percent. This means that chances are 2 out of 3 that the final estimate will not be above or below the current estimate of 12.0 million head by more than 0.0 percent. Chances are 9 out of 10 that the difference will not exceed 0.1 percent.

The table on the following page shows a 24 month record of the range of differences between first and latest estimates for selected items. Using estimates of number on feed as an example, changes between the first estimate and the latest estimate during the past 24 months have averaged 2,000 head, ranging from 0 to 15,000 head. During this period the initial estimate has been above the latest estimate 2 times and has been below the latest estimate 3 times. This does not imply that the initial estimate is likely to understate or overstate final inventory.

Reliability of Monthly Cattle on Feed Estimates

[Based on data for the past 24 months]

Item	Root mean square error	90 percent confidence level	Difference between first and latest estimate				
			Average	Smallest	Largest	Months	
						Below latest	Above latest
	(percent)	(percent)	(1,000)	(1,000)	(1,000)	(number)	(number)
Number on feed	0.0	0.1	2	0	15	3	2
Placements	0.2	0.4	2	0	15	3	2
Marketings	0.0	0.0	0	0	2	0	1

Information Contacts

Listed below are the commodity specialists in the Livestock Branch of the National Agricultural Statistics Service to contact for additional information. E-mail inquiries may be sent to nass@usda.gov.

Travis Averill, Chief, Livestock Branch	(202) 692-0069
Scott Hollis, Head, Livestock Section	(202) 690-2424
Sherry Bertramsen – Livestock Slaughter	(202) 690-8632
Holly Brenize – Sheep and Goats	(202) 720-0585
Donnie Fike – Dairy Products	(202) 720-4448
Heidi Lanouette – Cattle, Cattle on Feed	(202) 720-3040
Mike Miller – Milk Production and Milk Cows	(202) 720-3278
Seth Riggins – Hogs and Pigs	(202) 720-3106

Access to NASS Reports

For your convenience, you may access NASS reports and products the following ways:

- All reports are available electronically, at no cost, on the NASS web site: www.nass.usda.gov
- Both national and state specific reports are available via a free e-mail subscription. To set-up this free subscription, visit www.nass.usda.gov and click on “National” or “State” in upper right corner above “search” box to create an account and select the reports you would like to receive.
- Cornell’s Mann Library has launched a new website housing NASS’s and other agency’s archived reports. The new website, <https://usda.library.cornell.edu>. All email subscriptions containing reports will be sent from the new website, <https://usda.library.cornell.edu>. To continue receiving the reports via e-mail, you will have to go to the new website, create a new account and re-subscribe to the reports. If you need instructions to set up an account or subscribe, they are located at: <https://usda.library.cornell.edu/help>. You should whitelist notifications@usda-esmis.library.cornell.edu in your email client to avoid the emails going into spam/junk folders.

For more information on NASS surveys and reports, call the NASS Agricultural Statistics Hotline at (800) 727-9540, 7:30 a.m. to 4:00 p.m. ET, or e-mail: nass@nass.usda.gov.

The U.S. Department of Agriculture (USDA) prohibits discrimination against its customers, employees, and applicants for employment on the basis of race, color, national origin, age, disability, sex, gender identity, religion, reprisal, and where applicable, political beliefs, marital status, familial or parental status, sexual orientation, or all or part of an individual's income is derived from any public assistance program, or protected genetic information in employment or in any program or activity conducted or funded by the Department. (Not all prohibited bases will apply to all programs and/or employment activities.)

If you wish to file a Civil Rights program complaint of discrimination, complete the [USDA Program Discrimination Complaint Form](#) (PDF), found online at www.ascr.usda.gov/filing-program-discrimination-complaint-usda-customer, or at any USDA office, or call (866) 632-9992 to request the form. You may also write a letter containing all of the information requested in the form. Send your completed complaint form or letter to us by mail at U.S. Department of Agriculture, Director, Office of Adjudication, 1400 Independence Avenue, S.W., Washington, D.C. 20250-9410, by fax (202) 690-7442 or email at program.intake@usda.gov.

USDA's Agricultural Outlook Forum

96th Annual The Innovation Imperative: *Shaping the Future of Agriculture*

February 21-22, 2020 • Crystal Gateway Marriott Hotel, Arlington, Virginia

The 2020 Agricultural Outlook Forum

“Program at a Glance”

Join us February 20-21, 2020
Crystal Gateway Marriott Hotel Arlington, Virginia

Register [Here](#)

The Agricultural Outlook Forum

- USDA's largest annual gathering and the agricultural sector's premiere event
- Brings together more than 1,500 sector leaders and professionals to connect and discuss current and key emerging issues in agriculture
- More than 30 sessions covering commodity markets and outlook, international trade, agricultural policy, as well as cutting edge topics that will influence the future of agriculture



For More Information, please contact the Forum Coordinator [Mirvat Sewadeh](#) at 202-720-5447