



Cattle on Feed

ISSN: 1948-9080

Released August 21, 2020, by the National Agricultural Statistics Service (NASS), Agricultural Statistics Board, United States Department of Agriculture (USDA).

United States Cattle on Feed Up 2 Percent

Cattle and calves on feed for the slaughter market in the United States for feedlots with capacity of 1,000 or more head totaled 11.3 million head on August 1, 2020. The inventory was 2 percent above August 1, 2019. This is the highest August 1 inventory since the series began in 1996.

Placements in feedlots during July totaled 1.89 million head, 11 percent above 2019. Net placements were 1.84 million head. During July, placements of cattle and calves weighing less than 600 pounds were 420,000 head, 600-699 pounds were 315,000 head, 700-799 pounds were 435,000 head, 800-899 pounds were 458,000 head, 900-999 pounds were 195,000 head, and 1,000 pounds and greater were 70,000 head.

Marketings of fed cattle during July totaled 1.99 million head, 1 percent below 2019.

Other disappearance totaled 57,000 head during July, 20 percent below 2019.

Cattle on Feed Inventory, Placements, Marketings, and Other Disappearance on 1,000+ Capacity Feedlots – United States: August 1, 2019 and 2020

Item	Number		Percent of previous year
	2019	2020	
	(1,000 head)	(1,000 head)	(percent)
On feed July 1	11,480	11,438	100
Placed on feed during July	1,705	1,893	111
Fed cattle marketed during July	2,002	1,990	99
Other disappearance during July	71	57	80
On feed August 1	11,112	11,284	102

Cattle on Feed Inventory, Placements, Marketings, and Other Disappearance on 1,000+ Capacity Feedlots – United States: July 1, 2019 and 2020

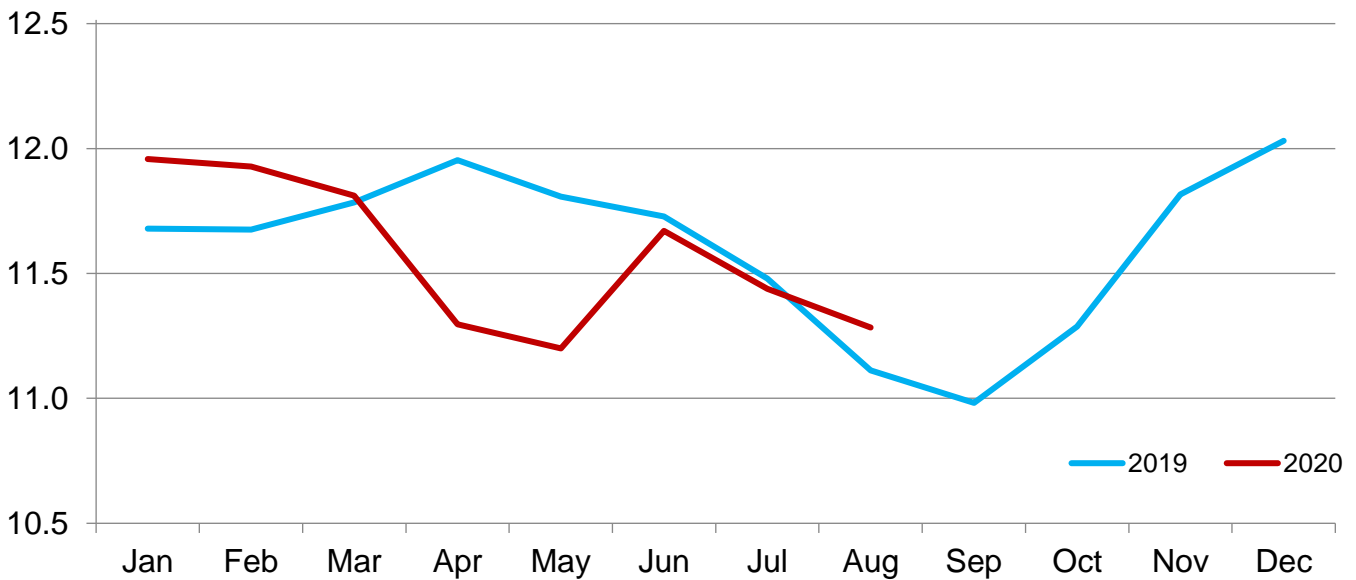
Item	Number		Percent of previous year
	2019	2020	
	(1,000 head)	(1,000 head)	(percent)
On feed June 1	11,728	11,671	100
Placed on feed during June	1,761	1,798	102
Fed cattle marketed during June	1,943	1,969	101
Other disappearance during June	66	62	94
On feed July 1	11,480	11,438	100

Cattle on Feed Inventory on 1,000+ Capacity Feedlots by Month – States and United States: 2019 and 2020

State	August 1, 2019	July 1, 2020	August 1, 2020		
			Number	Percent of previous year	Percent of previous month
	(1,000 head)	(1,000 head)	(1,000 head)	(percent)	(percent)
Arizona	272	273	269	99	99
California	535	545	545	102	100
Colorado	970	1,020	1,020	105	100
Idaho	280	280	260	93	93
Iowa	630	630	620	98	98
Kansas	2,340	2,390	2,410	103	101
Minnesota	110	125	120	109	96
Nebraska	2,190	2,260	2,220	101	98
Oklahoma	315	315	305	97	97
South Dakota	195	185	180	92	97
Texas	2,760	2,920	2,850	103	98
Washington	225	225	225	100	100
Other States	290	270	260	90	96
United States	11,112	11,438	11,284	102	99

Cattle on Feed Inventory on 1,000+ Capacity Feedlots – United States

Million head

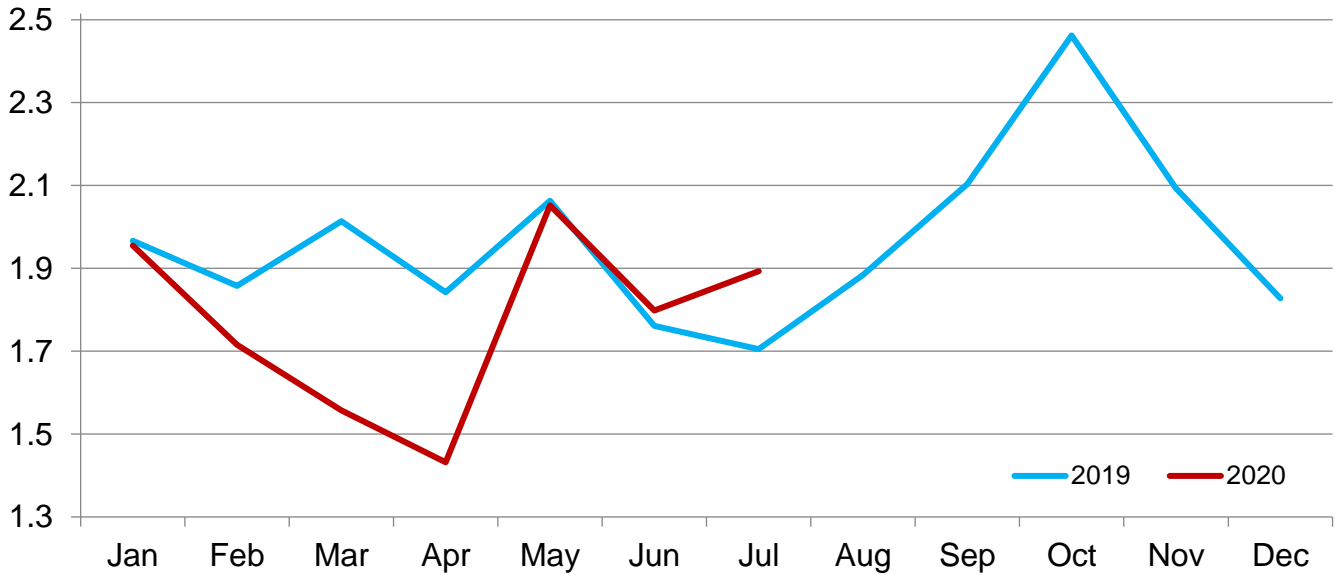


Cattle Placed on Feed on 1,000+ Capacity Feedlots by Month – States and United States: 2019 and 2020

State	During July 2019 (1,000 head)	During June 2020 (1,000 head)	During July 2020		
			Number (1,000 head)	Percent of previous year (percent)	Percent of previous month (percent)
Arizona	17	22	20	118	91
California	63	60	59	94	98
Colorado	130	175	165	127	94
Idaho	38	38	33	87	87
Iowa	61	58	63	103	109
Kansas	450	425	520	116	122
Minnesota	11	14	11	100	79
Nebraska	400	420	470	118	112
Oklahoma	45	55	41	91	75
South Dakota	23	23	20	87	87
Texas	380	440	415	109	94
Washington	32	26	33	103	127
Other States	55	42	43	78	102
United States	1,705	1,798	1,893	111	105

Cattle Placed on 1,000+ Capacity Feedlots – United States

Million head



Cattle Placed on Feed by Weight Group on 1,000+ Capacity Feedlots and Month – States and United States: 2019 and 2020

State	During July 2019							
	Under 600 lbs	600-699 lbs	700-799 lbs	800-899 lbs	900+ lbs ¹	900-999 lbs	1,000+ lbs	Total
	(1,000 head)	(1,000 head)	(1,000 head)	(1,000 head)	(1,000 head)	(1,000 head)	(1,000 head)	(1,000 head)
Colorado	25	20	30	25	30	(D)	(D)	130
Kansas	50	75	145	115	65	(D)	(D)	450
Nebraska	35	35	95	125	110	(D)	(D)	400
Texas	155	95	70	45	15	(D)	(D)	380
Other States ...	95	35	70	75	70	(D)	(D)	345
United States ..	360	260	410	385	(X)	200	90	1,705

State	During June 2020							
	Under 600 lbs	600-699 lbs	700-799 lbs	800-899 lbs	900+ lbs ¹	900-999 lbs	1,000+ lbs	Total
	(1,000 head)	(1,000 head)	(1,000 head)	(1,000 head)	(1,000 head)	(1,000 head)	(1,000 head)	(1,000 head)
Colorado	45	35	30	35	30	(D)	(D)	175
Kansas	60	80	110	115	60	(D)	(D)	425
Nebraska	40	55	75	130	120	(D)	(D)	420
Texas	185	90	90	55	20	(D)	(D)	440
Other States ...	100	50	55	78	55	(D)	(D)	338
United States ..	430	310	360	413	(X)	200	85	1,798

State	During July 2020							
	Under 600 lbs	600-699 lbs	700-799 lbs	800-899 lbs	900+ lbs ¹	900-999 lbs	1,000+ lbs	Total
	(1,000 head)	(1,000 head)	(1,000 head)	(1,000 head)	(1,000 head)	(1,000 head)	(1,000 head)	(1,000 head)
Colorado	35	30	40	30	30	(D)	(D)	165
Kansas	65	95	155	145	60	(D)	(D)	520
Nebraska	40	55	110	160	105	(D)	(D)	470
Texas	185	100	70	45	15	(D)	(D)	415
Other States ...	95	35	60	78	55	(D)	(D)	323
United States ..	420	315	435	458	(X)	195	70	1,893

(D) Withheld to avoid disclosing data for individual operations.

(X) Not applicable.

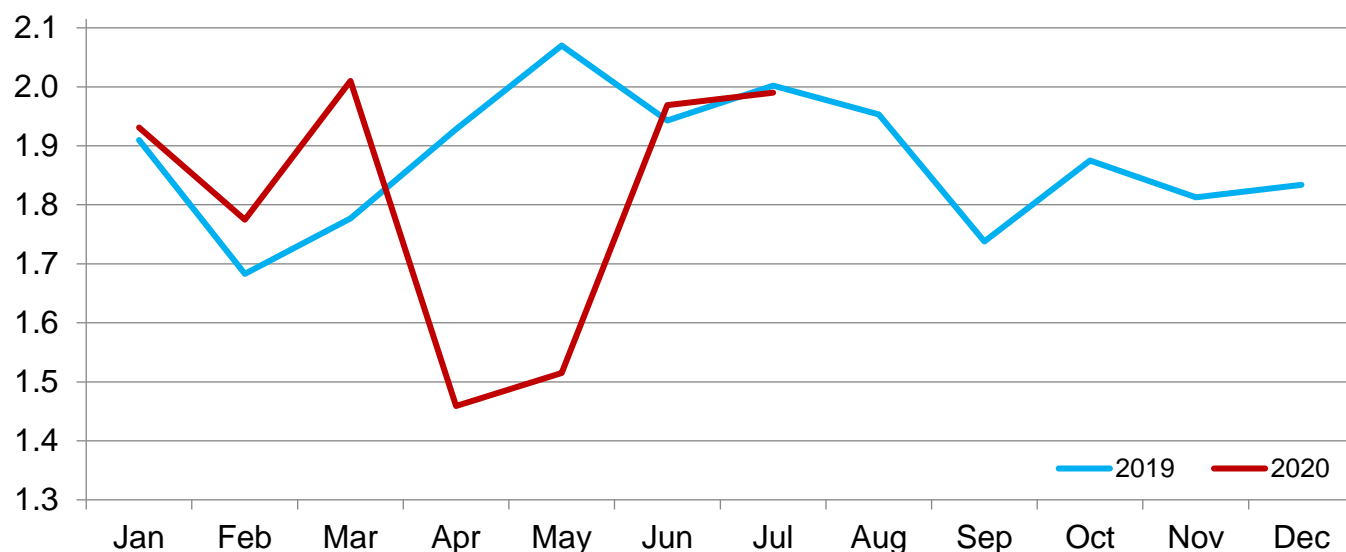
¹ The 900 pounds and greater weight group is the sum of 900-999 pounds and 1,000 pounds and greater weight groups.

Cattle Marketed on 1,000+ Capacity Feedlots by Month – States and United States: 2019 and 2020

State	During July 2019	During June 2020	During July 2020		
			Number	Percent of previous year	Percent of previous month
			(1,000 head)	(percent)	(percent)
Arizona	39	19	23	59	121
California	59	53	53	90	100
Colorado	185	160	160	86	100
Idaho	46	37	52	113	141
Iowa	77	66	70	91	106
Kansas	455	455	490	108	108
Minnesota	25	18	15	60	83
Nebraska	490	555	500	102	90
Oklahoma	49	54	50	102	93
South Dakota	37	32	24	65	75
Texas	445	440	470	106	107
Washington	41	30	32	78	107
Other States	54	50	51	94	102
United States	2,002	1,969	1,990	99	101

Cattle Marketed on 1,000+ Capacity Feedlots – United States

Million head



Cattle Other Disappearance on 1,000+ Capacity Feedlots by Month – States and United States: 2019 and 2020

State	During July 2019 (1,000 head)	During June 2020 (1,000 head)	During July 2020		
			Number (1,000 head)	Percent of previous year (percent)	Percent of previous month (percent)
Arizona	1	1	1	100	100
California	4	7	6	150	86
Colorado	5	5	5	100	100
Idaho	2	1	1	50	100
Iowa	4	2	3	75	150
Kansas	15	10	10	67	100
Minnesota	1	1	1	100	100
Nebraska	20	15	10	50	67
Oklahoma	1	1	1	100	100
South Dakota	1	6	1	100	17
Texas	15	10	15	100	150
Washington	1	1	1	100	100
Other States	1	2	2	200	100
United States	71	62	57	80	92

Terms and Definitions of Cattle on Feed Estimates

Cattle on feed are steers and heifers being fed a ration of grain, silage, hay and/or protein supplement for slaughter market that are expected to produce a carcass that will grade select or better. It excludes cattle being "backgrounded only" for later sale as feeders or later placement in another feedlot.

Placements are steers and heifers put into a feedlot, fed a ration which will produce a carcass that will grade select or better, and are intended for the slaughter market.

Marketings are steers and heifers shipped out of feedlots to a slaughter market.

Other disappearance includes death loss, movement from feedlots to pasture, and shipments to other feedlots for further feeding.

Statistical Methodology

Survey Procedures: During January and July all known feedlots in the United States with capacity of 1,000 or more head are surveyed to provide data for cattle on feed estimates. During the other months, all known feedlots from 16 States are surveyed. The 16 States account for approximately 98 percent of the cattle on feed in feedlots with capacity of 1,000 or more head. Individual State estimates are published monthly for 12 of the 16 States. Data collected from the remaining 4 States are used to establish the "Other States" estimates. These 4 States include Illinois, New Mexico, Oregon, and Wyoming. The "Other States" category represents all cattle on feed with a capacity of 1,000 or more head for the rest of the United States.

Estimating Procedures: These cattle on feed estimates were prepared by the Agricultural Statistics Board after reviewing recommendations and analysis submitted by Regional Field Offices. Regional and State survey data were reviewed for reasonableness with each other and with estimates from the previous month when establishing the current estimates.

Revision Policy: Revisions to previous estimates are made to improve month to month relationships. Estimates for the previous month are subject to revision in all States each month when current estimates are made. In February, all monthly estimates for the previous year, and the number of feedlots and annual marketings from two years ago are reviewed and subject to revisions. The reviews are primarily based on slaughter data, state check-off or brand data, and any other data that may have been received after the original estimate was made. Estimates will also be reviewed after data from the *Census of Agriculture* are available. No revisions will be made after that date and estimates become final.

Reliability: Since all 1,000+ capacity cattle on feed operators in every State are not included in the monthly survey, survey estimates are subject to sampling variability. Survey results are also subject to non-sampling errors such as omissions, duplications, and mistakes in reporting, recording, and processing the data. The effects of these errors cannot be measured directly. They are minimized through rigid quality controls in the data collection process and through a careful review of all reported data for consistency and reasonableness.

To assist users in evaluating the reliability of estimates in this report, the "**Root Mean Square Error**" is shown for selected items in the table on the following page. The "Root Mean Square Error" is a statistical measure based on past performance and is computed using the differences between first and latest estimates. The "Root Mean Square Error" for cattle on feed inventory estimates over the past 24 months is 0.1 percent. This means that chances are 2 out of 3 that the final estimate will not be above or below the current estimate of 11.3 million head by more than 0.1 percent. Chances are 9 out of 10 that the difference will not exceed 0.1 percent.

The table on the following page shows a 24 month record of the range of differences between first and latest estimates for selected items. Using estimates of number on feed as an example, changes between the first estimate and the latest estimate during the past 24 months have averaged 4,000 head, ranging from 0 to 15,000 head. During this period the initial estimate has been above the latest estimate 8 times and has been below the latest estimate 2 times. This does not imply that the initial estimate is likely to understate or overstate final inventory.

Reliability of Monthly Cattle on Feed Estimates

[Based on data for the past 24 months]

Item	Root mean square error	90 percent confidence level	Difference between first and latest estimate				
			Average	Smallest	Largest	Months	
						Below latest	Above latest
	(percent)	(percent)	(1,000)	(1,000)	(1,000)	(number)	(number)
Number on feed	0.1	0.1	4	0	15	2	8
Placements	0.3	0.5	3	0	15	6	3
Marketings	0.2	0.4	1	0	15	1	1

Information Contacts

Listed below are the commodity specialists in the Livestock Branch of the National Agricultural Statistics Service to contact for additional information. E-mail inquiries may be sent to nass@usda.gov.

Travis Averill, Chief, Livestock Branch	(202) 692-0069
Scott Hollis, Head, Livestock Section	(202) 690-2424
Sherry Bertramsen – Livestock Slaughter	(202) 690-8632
Holly Brenize – Sheep and Goats	(202) 720-0585
Ryan Cowen – Cattle, Cattle on Feed	(202) 720-3040
Mike Miller – Milk Production and Milk Cows	(202) 720-3278
Suzanne Richards – Dairy Products	(202) 720-4448
Seth Riggins – Hogs and Pigs	(202) 720-3106

Access to NASS Reports

For your convenience, you may access NASS reports and products the following ways:

- All reports are available electronically, at no cost, on the NASS web site: www.nass.usda.gov
- Both national and state specific reports are available via a free e-mail subscription. To set-up this free subscription, visit www.nass.usda.gov and click on “National” or “State” in upper right corner above “search” box to create an account and select the reports you would like to receive.
- Cornell’s Mann Library has launched a new website housing NASS’s and other agencies archived reports. The new website, <https://usda.library.cornell.edu>. All email subscriptions containing reports will be sent from the new website, <https://usda.library.cornell.edu>. To continue receiving the reports via e-mail, you will have to go to the new website, create a new account and re-subscribe to the reports. If you need instructions to set up an account or subscribe, they are located at: <https://usda.library.cornell.edu/help>. You should whitelist notifications@usda-esmis.library.cornell.edu in your email client to avoid the emails going into spam/junk folders.

For more information on NASS surveys and reports, call the NASS Agricultural Statistics Hotline at (800) 727-9540, 7:30 a.m. to 4:00 p.m. ET, or e-mail: nass@usda.gov.

The U.S. Department of Agriculture (USDA) prohibits discrimination against its customers, employees, and applicants for employment on the basis of race, color, national origin, age, disability, sex, gender identity, religion, reprisal, and where applicable, political beliefs, marital status, familial or parental status, sexual orientation, or all or part of an individual's income is derived from any public assistance program, or protected genetic information in employment or in any program or activity conducted or funded by the Department. (Not all prohibited bases will apply to all programs and/or employment activities.)

If you wish to file a Civil Rights program complaint of discrimination, complete the [USDA Program Discrimination Complaint Form](#) (PDF), found online at www.ascr.usda.gov/filing-program-discrimination-complaint-usda-customer, or at any USDA office, or call (866) 632-9992 to request the form. You may also write a letter containing all of the information requested in the form. Send your completed complaint form or letter to us by mail at U.S. Department of Agriculture, Director, Office of Adjudication, 1400 Independence Avenue, S.W., Washington, D.C. 20250-9410, by fax (202) 690-7442 or email at program.intake@usda.gov.