



Released May 25, 2018, by the National Agricultural Statistics Service (NASS), Agricultural Statistics Board, United States Department of Agriculture (USDA).

United States Cattle on Feed Up 5 Percent

Cattle and calves on feed for the slaughter market in the United States for feedlots with capacity of 1,000 or more head totaled 11.6 million head on May 1, 2018. The inventory was 5 percent above May 1, 2017. This is the second highest May 1 inventory since the series began in 1996.

Placements in feedlots during April totaled 1.70 million head, 8 percent below 2017. Net placements were 1.63 million head. During April, placements of cattle and calves weighing less than 600 pounds were 320,000 head, 600-699 pounds were 230,000 head, 700-799 pounds were 415,000 head, 800-899 pounds were 445,000 head, 900-999 pounds were 205,000 head, and 1,000 pounds and greater were 80,000 head.

Marketings of fed cattle during April totaled 1.80 million head, 6 percent above 2017.

Other disappearance totaled 63,000 head during April, 5 percent below 2017.

Cattle on Feed Inventory, Placements, Marketings, and Other Disappearance on 1,000+ Capacity Feedlots – United States: May 1, 2017 and 2018

Item	Number		Percent of previous year
	2017	2018	
	(1,000 head)	(1,000 head)	(percent)
On feed April 1	10,919	11,729	107
Placed on feed during April	1,848	1,695	92
Fed cattle marketed during April	1,703	1,803	106
Other disappearance during April	66	63	95
On feed May 1	10,998	11,558	105

Cattle on Feed Inventory, Placements, Marketings, and Other Disappearance on 1,000+ Capacity Feedlots – United States: April 1, 2017 and 2018

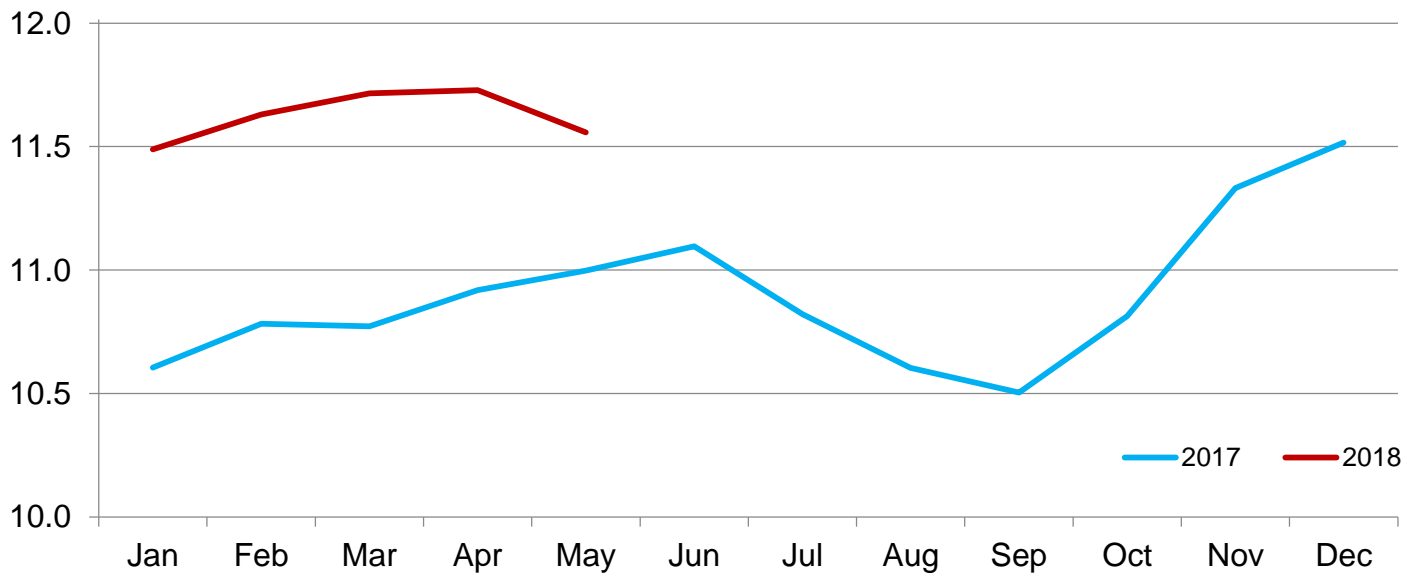
Item	Number		Percent of previous year
	2017	2018	
	(1,000 head)	(1,000 head)	(percent)
On feed March 1	10,772	11,715	109
Placed on feed during March	2,117	1,921	91
Fed cattle marketed during March	1,914	1,840	96
Other disappearance during March	56	67	120
On feed April 1	10,919	11,729	107

Cattle on Feed Inventory on 1,000+ Capacity Feedlots by Month – States and United States: 2017 and 2018

State	May 1, 2017	April 1, 2018	May 1, 2018		
			Number	Percent of previous year	Percent of previous month
	(1,000 head)	(1,000 head)	(1,000 head)	(percent)	(percent)
Arizona	243	294	298	123	101
California	425	500	500	118	100
Colorado	960	950	940	98	99
Idaho	275	250	255	93	102
Iowa	680	740	730	107	99
Kansas	2,280	2,340	2,290	100	98
Minnesota	155	160	155	100	97
Nebraska	2,450	2,690	2,660	109	99
Oklahoma	310	310	310	100	100
South Dakota	255	260	255	100	98
Texas	2,460	2,700	2,630	107	97
Washington	200	210	210	105	100
Other States	305	325	325	107	100
United States	10,998	11,729	11,558	105	99

Cattle on Feed Inventory on 1,000+ Capacity Feedlots – United States

Million head

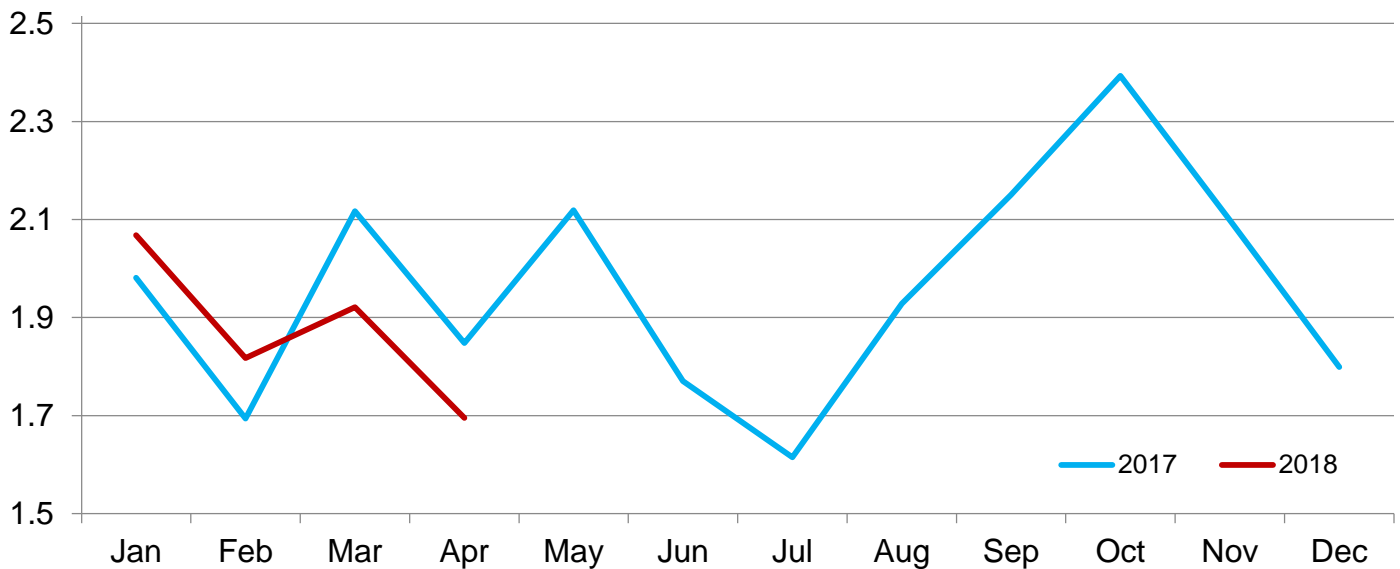


Cattle Placed on Feed on 1,000+ Capacity Feedlots by Month – States and United States: 2017 and 2018

State	During April 2017 (1,000 head)	During March 2018 (1,000 head)	During April 2018		
			Number (1,000 head)	Percent of previous year (percent)	Percent of previous month (percent)
Arizona	27	34	26	96	76
California	65	68	59	91	87
Colorado	155	165	145	94	88
Idaho	40	29	28	70	97
Iowa	95	107	80	84	75
Kansas	420	405	380	90	94
Minnesota	12	17	12	100	71
Nebraska	395	480	420	106	88
Oklahoma	72	53	60	83	113
South Dakota	34	27	25	74	93
Texas	460	455	385	84	85
Washington	36	29	27	75	93
Other States	37	52	48	130	92
United States	1,848	1,921	1,695	92	88

Cattle Placed on 1,000+ Capacity Feedlots – United States

Million head



Cattle Placed on Feed by Weight Group on 1,000+ Capacity Feedlots and Month – States and United States: 2017 and 2018

State	During April 2017							
	Under 600 lbs (1,000 head)	600-699 lbs (1,000 head)	700-799 lbs (1,000 head)	800-899 lbs (1,000 head)	900+ lbs ¹ (1,000 head)	900-999 lbs (1,000 head)	1,000+ lbs (1,000 head)	Total (1,000 head)
Colorado	25	25	40	40	25	(D)	(D)	155
Kansas	50	50	125	130	65	(D)	(D)	420
Nebraska	45	45	95	115	95	(D)	(D)	395
Texas	115	85	140	95	25	(D)	(D)	460
Other States ...	113	50	90	115	50	(D)	(D)	418
United States ..	348	255	490	495	(X)	190	70	1,848
State	During March 2018							
	Under 600 lbs (1,000 head)	600-699 lbs (1,000 head)	700-799 lbs (1,000 head)	800-899 lbs (1,000 head)	900+ lbs ¹ (1,000 head)	900-999 lbs (1,000 head)	1,000+ lbs (1,000 head)	Total (1,000 head)
Colorado	25	25	40	50	25	(D)	(D)	165
Kansas	40	55	125	125	60	(D)	(D)	405
Nebraska	35	75	115	150	105	(D)	(D)	480
Texas	115	85	135	95	25	(D)	(D)	455
Other States ...	100	45	115	111	45	(D)	(D)	416
United States ..	315	285	530	531	(X)	185	75	1,921
State	During April 2018							
	Under 600 lbs (1,000 head)	600-699 lbs (1,000 head)	700-799 lbs (1,000 head)	800-899 lbs (1,000 head)	900+ lbs ¹ (1,000 head)	900-999 lbs (1,000 head)	1,000+ lbs (1,000 head)	Total (1,000 head)
Colorado	25	20	35	40	25	(D)	(D)	145
Kansas	40	55	105	110	70	(D)	(D)	380
Nebraska	40	45	95	125	115	(D)	(D)	420
Texas	115	70	100	75	25	(D)	(D)	385
Other States ...	100	40	80	95	50	(D)	(D)	365
United States ..	320	230	415	445	(X)	205	80	1,695

(D) Withheld to avoid disclosing data for individual operations.

(X) Not applicable.

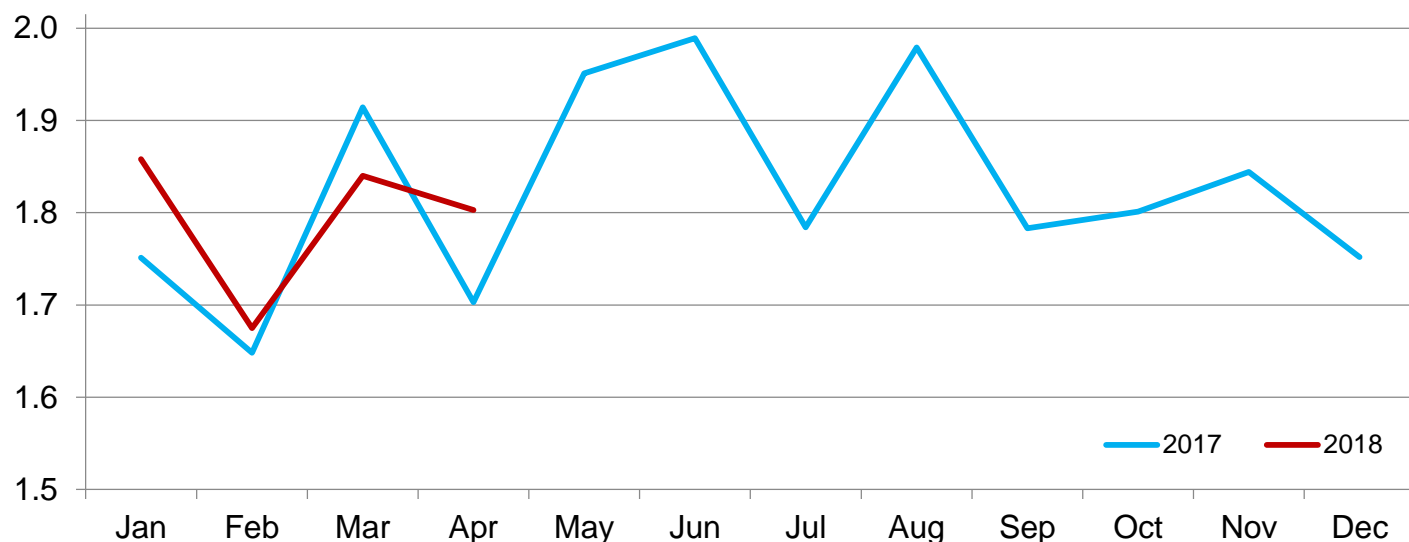
¹ The 900 pounds and greater weight group is the sum of 900-999 pounds and 1,000 pounds and greater weight groups.

Cattle Marketed on 1,000+ Capacity Feedlots by Month – States and United States: 2017 and 2018

State	During April 2017 (1,000 head)	During March 2018 (1,000 head)	During April 2018		
			Number (1,000 head)	Percent of previous year (percent)	Percent of previous month (percent)
Arizona	22	24	21	95	88
California	53	55	56	106	102
Colorado	125	160	150	120	94
Idaho	24	32	21	88	66
Iowa	82	93	87	106	94
Kansas	385	400	420	109	105
Minnesota	16	21	16	100	76
Nebraska	390	465	430	110	92
Oklahoma	60	57	59	98	104
South Dakota	27	36	27	100	75
Texas	450	420	445	99	106
Washington	29	28	26	90	93
Other States	40	49	45	113	92
United States	1,703	1,840	1,803	106	98

Cattle Marketed on 1,000+ Capacity Feedlots – United States

Million head



Cattle Other Disappearance on 1,000+ Capacity Feedlots by Month – States and United States: 2017 and 2018

State	During April 2017 (1,000 head)	During March 2018 (1,000 head)	During April 2018		
			Number (1,000 head)	Percent of previous year (percent)	Percent of previous month (percent)
Arizona	1	1	1	100	100
California	2	3	3	150	100
Colorado	10	5	5	50	100
Idaho	1	2	2	200	100
Iowa	3	4	3	100	75
Kansas	15	15	10	67	67
Minnesota	1	1	1	100	100
Nebraska	15	15	20	133	133
Oklahoma	2	1	1	50	100
South Dakota	2	1	3	150	300
Texas	10	15	10	100	67
Washington	2	1	1	50	100
Other States	2	3	3	150	100
United States	66	67	63	95	94

Terms and Definitions of Cattle on Feed Estimates

Cattle on feed are steers and heifers being fed a ration of grain, silage, hay and/or protein supplement for slaughter market that are expected to produce a carcass that will grade select or better. It excludes cattle being "backgrounded only" for later sale as feeders or later placement in another feedlot.

Placements are steers and heifers put into a feedlot, fed a ration which will produce a carcass that will grade select or better, and are intended for the slaughter market.

Marketings are steers and heifers shipped out of feedlots to a slaughter market.

Other disappearance includes death loss, movement from feedlots to pasture, and shipments to other feedlots for further feeding.

Statistical Methodology

Survey Procedures: During January and July all known feedlots in the United States with capacity of 1,000 or more head are surveyed to provide data for cattle on feed estimates. During the other months, all known feedlots from 16 States are surveyed. The 16 States account for approximately 98 percent of the cattle on feed in feedlots with capacity of 1,000 or more head. Individual State estimates are published monthly for 12 of the 16 States. Data collected from the remaining 4 States are used to establish the "Other States" estimates. These 4 States include Illinois, New Mexico, Oregon, and Wyoming. The "Other States" category represents all cattle on feed with a capacity of 1,000 or more head for the rest of the United States.

Estimating Procedures: These cattle on feed estimates were prepared by the Agricultural Statistics Board after reviewing recommendations and analysis submitted by Regional Field Offices. Regional and State survey data were reviewed for reasonableness with each other and with estimates from the previous month when establishing the current estimates.

Revision Policy: Revisions to previous estimates are made to improve month to month relationships. Estimates for the previous month are subject to revision in all States each month when current estimates are made. In February, all monthly estimates for the previous year, and the number of feedlots and annual marketings from two years ago are reviewed and subject to revisions. The reviews are primarily based on slaughter data, state check-off or brand data, and any other data that may have been received after the original estimate was made. Estimates will also be reviewed after data from the *Census of Agriculture* are available. No revisions will be made after that date and estimates become final.

Reliability: Since all 1,000+ capacity cattle on feed operators in every State are not included in the monthly survey, survey estimates are subject to sampling variability. Survey results are also subject to non-sampling errors such as omissions, duplications, and mistakes in reporting, recording, and processing the data. The effects of these errors cannot be measured directly. They are minimized through rigid quality controls in the data collection process and through a careful review of all reported data for consistency and reasonableness.

To assist users in evaluating the reliability of estimates in this report, the "**Root Mean Square Error**" is shown for selected items in the table on the following page. The "Root Mean Square Error" is a statistical measure based on past performance and is computed using the differences between first and latest estimates. The "Root Mean Square Error" for cattle on feed inventory estimates over the past 24 months is 0.0 percent. This means that chances are 2 out of 3 that the final estimate will not be above or below the current estimate of 11.6 million head by more than 0.0 percent. Chances are 9 out of 10 that the difference will not exceed 0.1 percent.

The table on the following page shows a 24 month record of the range of differences between first and latest estimates for selected items. Using estimates of number on feed as an example, changes between the first estimate and the latest estimate during the past 24 months have averaged 1,000 head, ranging from 0 to 15,000 head. During this period the initial estimate has been above the latest estimate 1 time and has been below the latest estimate 2 times. This does not imply that the initial estimate is likely to understate or overstate final inventory.

Reliability of Monthly Cattle on Feed Estimates

[Based on data for the past 24 months]

Item	Root mean square error	90 percent confidence level	Difference between first and latest estimate				
			Average	Smallest	Largest	Months	
						Below latest	Above latest
	(percent)	(percent)	(1,000)	(1,000)	(1,000)	(number)	(number)
Number on feed	0.0	0.1	1	0	15	2	1
Placements	0.2	0.4	2	0	15	2	2
Marketings	0.1	0.2	0	0	10	0	1

Information Contacts

Listed below are the commodity specialists in the Livestock Branch of the National Agricultural Statistics Service to contact for additional information. E-mail inquiries may be sent to nass@nass.usda.gov.

Travis Averill, Chief, Livestock Branch	(202) 720-3570
Scott Hollis, Head, Livestock Section	(202) 690-2424
Sherry Bertramsen – Livestock Slaughter	(202) 720-3240
Holly Brenize – Sheep and Goats	(202) 720-0585
Donnie Fike – Dairy Products	(202) 690-3236
Heidi Gleich – Cattle, Cattle on Feed	(202) 720-3040
Mike Miller – Milk Production and Milk Cows	(202) 720-3278
Seth Riggins – Hogs and Pigs	(202) 720-3106

Access to NASS Reports

For your convenience, you may access NASS reports and products the following ways:

- All reports are available electronically, at no cost, on the NASS web site: www.nass.usda.gov
- Both national and state specific reports are available via a free e-mail subscription. To set-up this free subscription, visit www.nass.usda.gov and click on “National” or “State” in upper right corner above “search” box to create an account and select the reports you would like to receive.

For more information on NASS surveys and reports, call the NASS Agricultural Statistics Hotline at (800) 727-9540, 7:30 a.m. to 4:00 p.m. ET, or e-mail: nass@nass.usda.gov.

The U.S. Department of Agriculture (USDA) prohibits discrimination against its customers, employees, and applicants for employment on the basis of race, color, national origin, age, disability, sex, gender identity, religion, reprisal, and where applicable, political beliefs, marital status, familial or parental status, sexual orientation, or all or part of an individual's income is derived from any public assistance program, or protected genetic information in employment or in any program or activity conducted or funded by the Department. (Not all prohibited bases will apply to all programs and/or employment activities.)

If you wish to file a Civil Rights program complaint of discrimination, complete the [USDA Program Discrimination Complaint Form](#) (PDF), found online at www.ascr.usda.gov/filing-program-discrimination-complaint-usda-customer, or at any USDA office, or call (866) 632-9992 to request the form. You may also write a letter containing all of the information requested in the form. Send your completed complaint form or letter to us by mail at U.S. Department of Agriculture, Director, Office of Adjudication, 1400 Independence Avenue, S.W., Washington, D.C. 20250-9410, by fax (202) 690-7442 or email at program.intake@usda.gov.