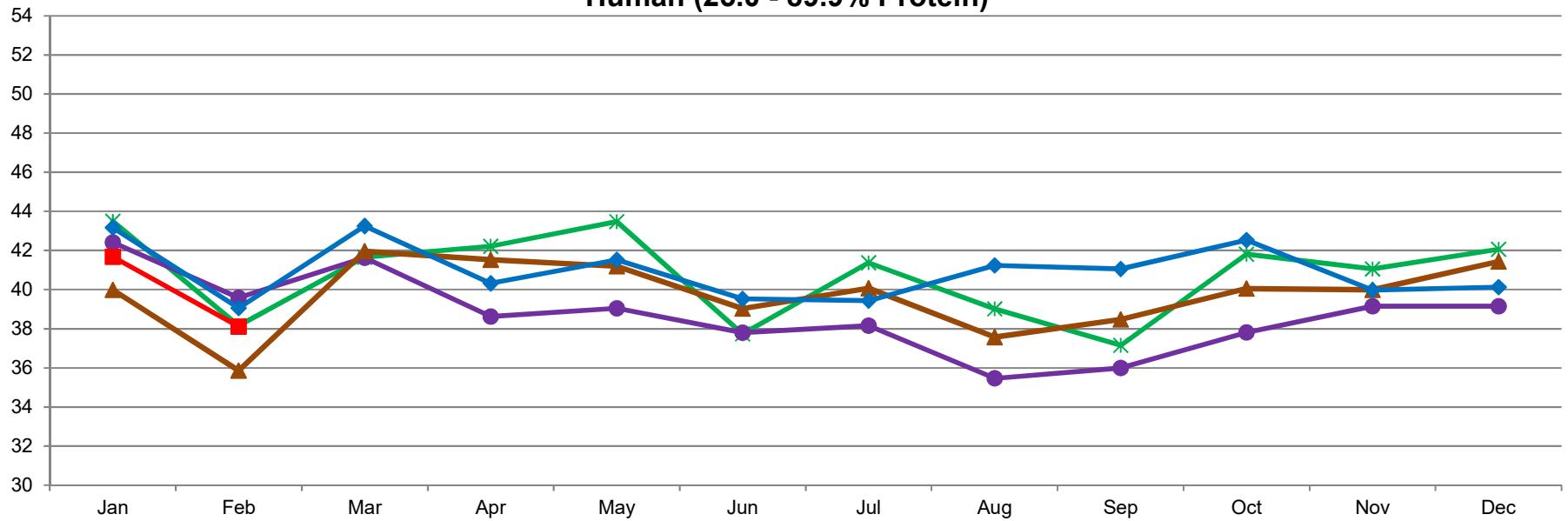


MILLION POUNDS

U.S. Whey Protein Concentrate Production, Human (25.0 - 89.9% Protein)



4/3/2019- DATA SOURCE, USDA, NASS; GRAPH, USDA, AMS, DMN
USDA/AMS/Dairy Market News, Madison, Wisconsin, (608) 422-8587
Dairy Market News website: <http://www.ams.usda.gov/market-news/dairy>

—*— 2015 —●— 2016 —▲— 2017 —◆— 2018 —■— 2019