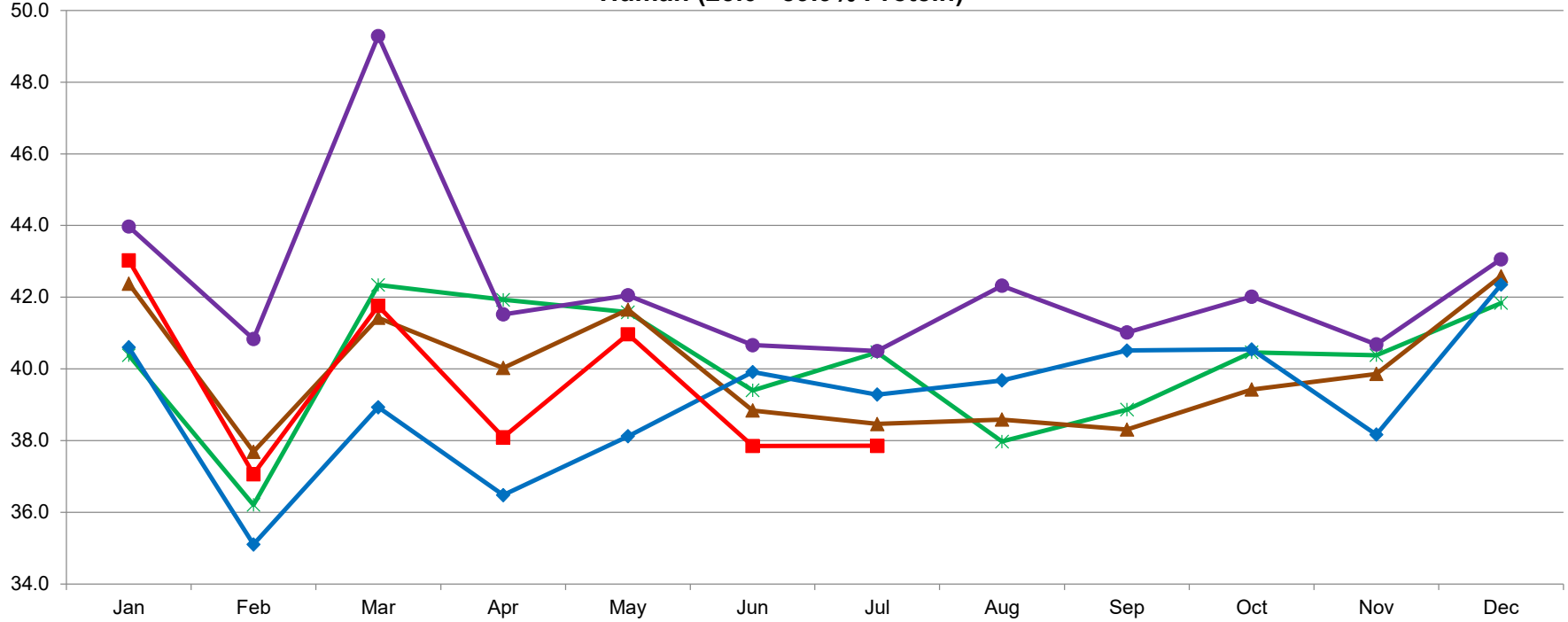


### U.S. Whey Protein Concentrate Production Human (25.0 - 89.9% Protein)

MILLION POUNDS



9/3/2021 - DATA SOURCE, USDA, NASS; GRAPH, USDA, AMS, DMN USDA/AMS/Dairy Market News, Madison, Wisconsin, (608)278-4150 Dairy Market News website: <https://www.ams.usda.gov/market-news/dairy> Dairy Market News database portal: <https://mymarketnews.ams.usda.gov/>

✱ 2017    
 ● 2018    
 ▲ 2019    
 ◆ 2020    
 ■ 2021