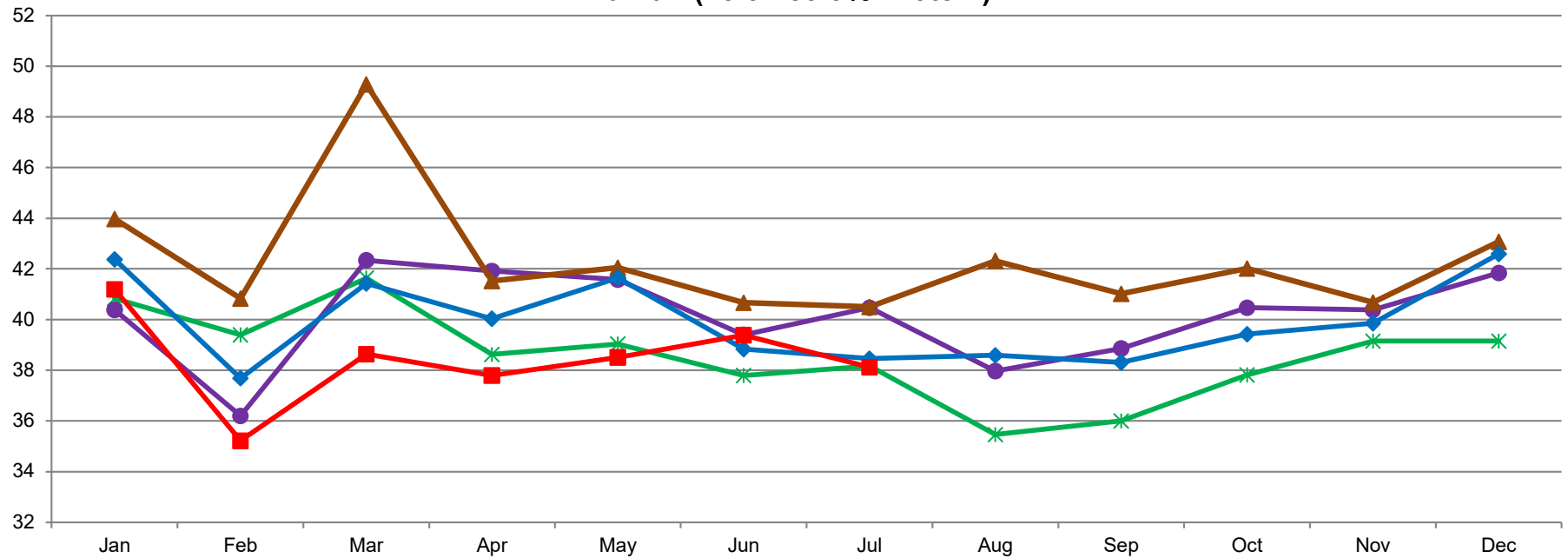


MILLION POUNDS

U.S. Whey Protein Concentrate Production, Human (25.0 - 89.9% Protein)



9/3/2020- DATA SOURCE, USDA, NASS; GRAPH, USDA, AMS, DMN
USDA/AMS/Dairy Market News, Madison, Wisconsin, (608) 422-8587
Dairy Market News website: <http://www.ams.usda.gov/market-news/dairy>

2016 2017 2018 2019 2020