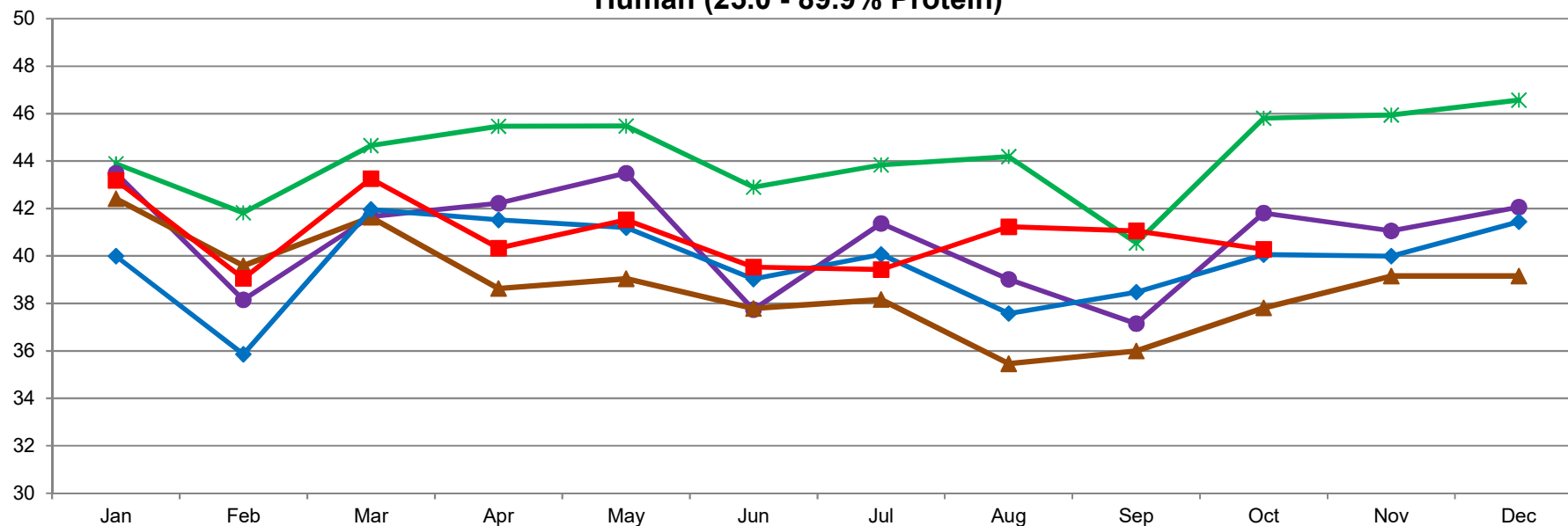


MILLION POUNDS

U.S. Whey Protein Concentrate Production, Human (25.0 - 89.9% Protein)



12/4/2018- DATA SOURCE, USDA, NASS; GRAPH, USDA, AMS, DMN
USDA/AMS/Dairy Market News, Madison, Wisconsin, (608) 422-8587
Dairy Market News website: <http://www.ams.usda.gov/market-news/dairy>
Dairy Market News database portal: <https://www.marketnews.usda.gov/>

—*— 2014 —●— 2015 —▲— 2016 —◆— 2017 —■— 2018