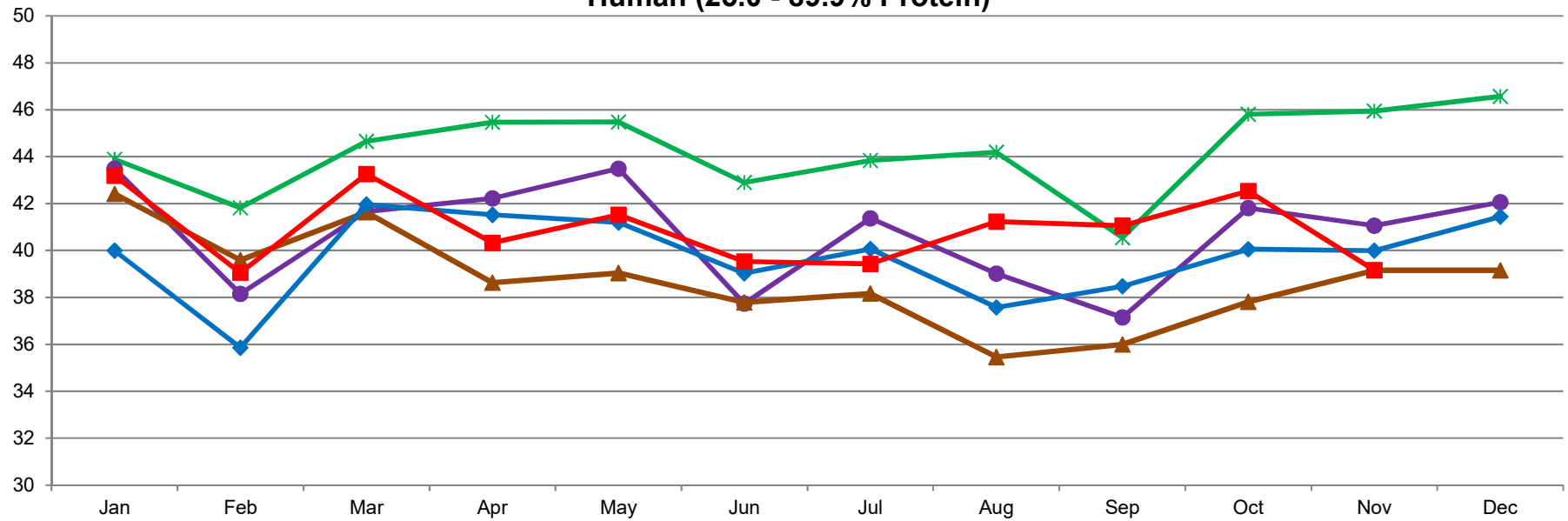


MILLION POUNDS

### U.S. Whey Protein Concentrate Production, Human (25.0 - 89.9% Protein)



2/4/2019- DATA SOURCE, USDA, NASS; GRAPH, USDA, AMS, DMN  
USDA/AMS/Dairy Market News, Madison, Wisconsin, (608) 422-8587  
Dairy Market News website: <http://www.ams.usda.gov/market-news/dairy>  
Dairy Market News database portal: <https://www.marketnews.usda.gov/>

—\*— 2014    —●— 2015    —▲— 2016    —◆— 2017    —■— 2018