

AMS 2453/LM XB403

DAILY ESTIMATED CUTOUT VALUES

	Choice	Select		
	600-900#	600-900#	Choice/Select Spread	
Current Cutout Values:	366.68	344.87	21.81	
Change from prior day:	(-1.41)	(-2.13)		
Primal Rib	518.13	456.60		
Primal Chuck	304.27	300.76		
Primal Round	319.34	319.20		
Primal Loin	479.39	416.04		
Primal Brisket	317.93	312.78		
Primal Short Plate	290.51	290.51		
Primal Flank	236.78	236.57		
			Load Count:	
			Total	105
			Choice	67
			Select	21
			Trimming	11
			Grinds	7

Fresh 50% Trimmings 11 Loads @ 198.90

AMS 2829/NW LS441

USDA BY-PRODUCT DROP VALUE (STEER) - DAILY

11.73 Change: unch

AMS 2466/LM CT100

5 AREA WEEKLY ACCUMULATED WEIGHTED AVG CATTLE PRICE

As of 10:00 am	Head Count	Avg Weight	Avg Price
Live Steer	1,163	1,389	231.50
Live Heifer	1,076	1,276	230.84
Dressed Steer			
Dressed Heifer			

AMS 3208/SJ LS710

DAILY CATTLE SLAUGHTER	Friday	Saturday
Today	96,000	5,000
Week Ago	101,000	4,000
Year Ago (act)	111,712	10,406
Week to Date	544,000	549,000
Same Period Last Week	559,000	563,000
Same Period Last Year	594,770	605,176
Previous Day	Steer and Heifer	95,000
	Cow and Bull	22,000

AMS 3209/SJ LS712

BEEF PRODUCTION	7/26/2025	Last Week	(Actual)
Slaughter	(Estimate)	(Estimate)	
	549,000	563,000	605,000
Live Weights	1,410	1,411	1,384
Dressed Weights	866	867	846
Beef Production (millions of pounds)	474	487	511

AMS 2825/NW LS410

USDA BEEF CARCASS PRICE EQUIVALENT INDEX VALUE

	Choice	Select	Dressing percent:	
	600-900#	600-900#	Steer	Heifer
Change	\$359.37	\$339.40	63.48	63.47
	(-0.19)	(-0.55)		

AMS 2455/LM XB405

USDA NATIONAL CUTTER COW CARCASS CUTOUT

325.58 0.31 90% lean: 418.36

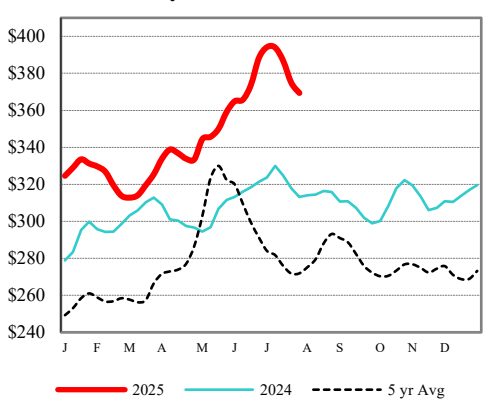
CME LIVE CATTLE

	High	Low	Change	Settle
APR	N/A			
JUN	N/A			
AUG	N/A			

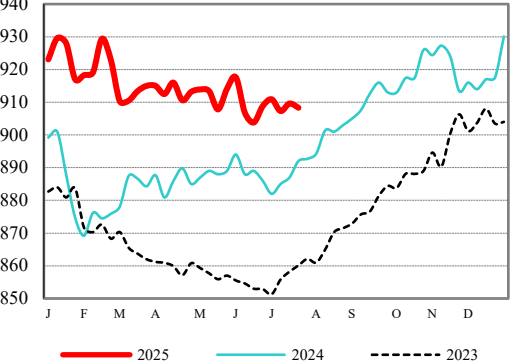
CME FEEDER CATTLE

	High	Low	Change	Settle
APR	N/A			
MAY	N/A			
AUG	N/A			

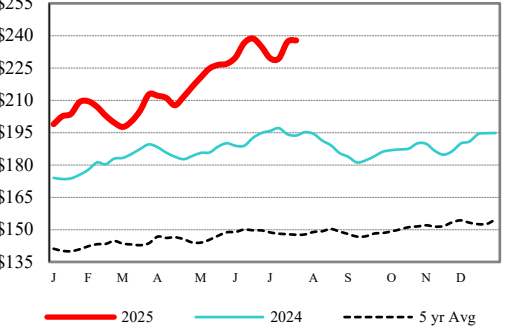
Weekly Choice Cutout



LMR Steer/Heifer Dressed Weights



5 Area Weekly Wtd Avg Steer Price



Weekly Ch/Se Spread

