

AMS 2453/LM XB403

DAILY ESTIMATED CUTOUT VALUES

	Choice	Select		
	600-900#	600-900#	Choice/Select Spread	
Current Cutout Values:	367.52	345.39	22.13	
Change from prior day:	(-4.98)	(-2.55)		
Primal Rib	517.49	450.80		
Primal Chuck	299.44	298.15	Load Count:	
Primal Round	318.75	320.78	Total	164
Primal Loin	489.73	423.15	Choice	114
Primal Brisket	319.10	309.62	Select	28
Primal Short Plate	294.11	294.11	Trimming	5
Primal Flank	235.53	236.42	Grinds	17

Fresh 50% Trimmings 5 Loads @ 222.06

AMS 2829/NW LS441

USDA BY-PRODUCT DROP VALUE (STEER) - DAILY

11.79 Change: Unch

AMS 2466/LM CT100

5 AREA WEEKLY ACCUMULATED WEIGHTED AVG CATTLE PRICE

As of 10:00 am	Head Count	Avg Weight	Avg Price
Live Steer	68	1,300	240.00
Live Heifer	86	1,350	238.00
Dressed Steer			
Dressed Heifer			

AMS 3208/SJ LS710

DAILY CATTLE SLAUGHTER

Today	114,000	
Week Ago	113,000	
Year Ago (act)	123,358	
Week to Date	331,000	
Same Period Last Week	343,000	
Same Period Last Year	362,341	
Previous Day	Steer and Heifer	91,000
	Cow and Bull	21,000

AMS 3209/SJ LS712

BEEF PRODUCTION	7/19/2025	Last Week	
	(Estimate)	(Estimate)	(Actual)
Slaughter	563,000	568,000	589,000
Live Weights	1,411	1,411	1,379
Dressed Weights	867	866	839
Beef Production (millions of pounds)	487	491	494

AMS 2825/NW LS410

USDA BEEF CARCASS PRICE EQUIVALENT INDEX VALUE

	Choice	Select	Dressing percent:	
	600-900#	600-900#	Steer	Heifer
	\$359.36	\$339.24	63.65	63.66
Change	(-2.38)	(-1.16)		

AMS 2455/LM XB405

USDA NATIONAL CUTTER COW CARCASS CUTOUT

325.85 0.05 90% lean: 419.30

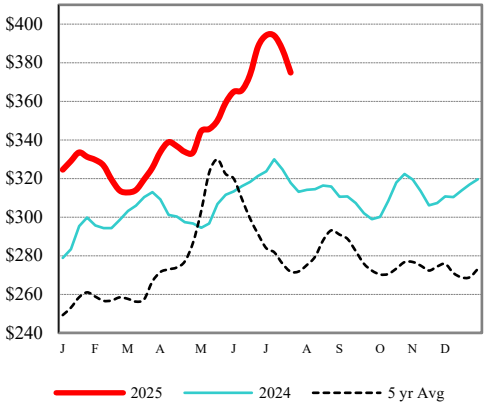
CME LIVE CATTLE

	High	Low	Change	Settle
APR	N/A			
JUN	N/A			
AUG	N/A			

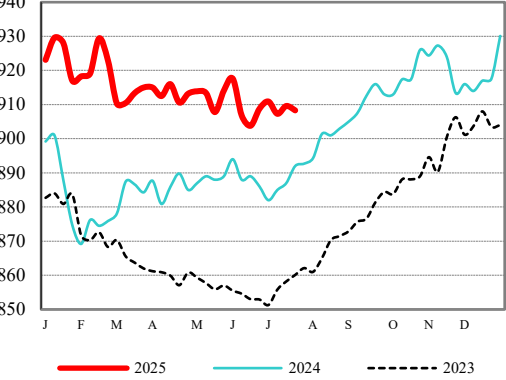
CME FEEDER CATTLE

	High	Low	Change	Settle
APR	N/A			
MAY	N/A			
AUG	N/A			

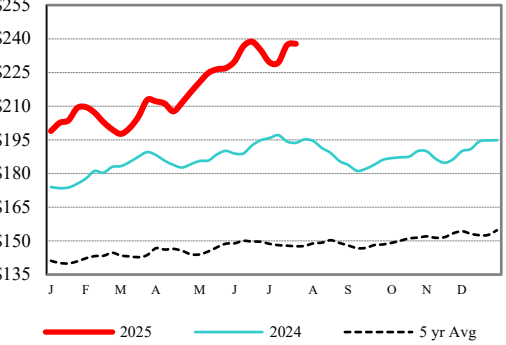
Weekly Choice Cutout



LMR Steer/Heifer Dressed Weights



5 Area Weekly Wtd Avg Steer Price



Weekly Ch/Se Spread

