

AMS 2453/LM XB403

DAILY ESTIMATED CUTOUT VALUES

	Choice	Select		
	600-900#	600-900#	Choice/Select Spread	
Current Cutout Values:	372.50	347.94	24.56	
Change from prior day:	0.43	(-2.11)		
Primal Rib	521.73	452.96		
Primal Chuck	304.62	298.16	Load Count:	
Primal Round	320.26	319.23	Total	136
Primal Loin	497.22	429.12	Choice	73
Primal Brisket	324.23	315.77	Select	28
Primal Short Plate	305.43	305.43	Trimming	24
Primal Flank	234.88	244.40	Grinds	11

Fresh 50% Trimmings 24 Loads @ 215.87

AMS 2829/NW LS441

USDA BY-PRODUCT DROP VALUE (STEER) - DAILY

11.79 Change: 0.09

AMS 2466/LM CT100

5 AREA WEEKLY ACCUMULATED WEIGHTED AVG CATTLE PRICE

As of 10:00 am	Head Count	Avg Weight	Avg Price
Live Steer	68	1,300	240.00
Live Heifer	86	1,350	238.00
Dressed Steer			
Dressed Heifer			

AMS 3208/SJ LS710

DAILY CATTLE SLAUGHTER

Today	112,000
Week Ago	118,000
Year Ago (act)	125,096
Week to Date	217,000
Same Period Last Week	230,000
Same Period Last Year	238,983
Previous Day	Steer and Heifer 87,000 Cow and Bull 18,000

AMS 3209/SJ LS712

	7/19/2025	Last Week	
BEEF PRODUCTION	(Estimate)	(Estimate)	(Actual)
Slaughter	563,000	568,000	589,000
Live Weights	1,411	1,411	1,379
Dressed Weights	867	866	839
Beef Production (millions of pounds)	487	491	494

AMS 2825/NW LS410

USDA BEEF CARCASS PRICE EQUIVALENT INDEX VALUE

	Choice	Select	Dressing percent:	
	600-900#	600-900#	Steer	Heifer
	\$361.74	\$340.40	63.65	63.65
Change	0.17	(-1.10)		

AMS 2455/LM XB405

USDA NATIONAL CUTTER COW CARCASS CUTOUT

325.80 1.53 90% lean: 419.30

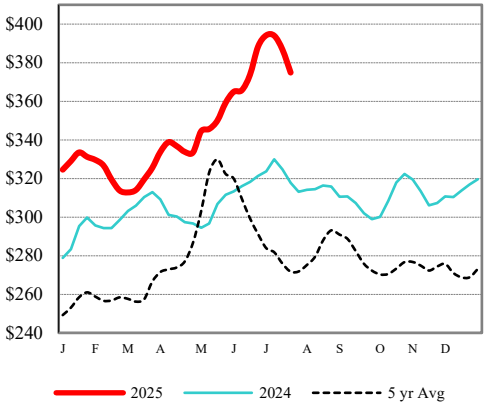
CME LIVE CATTLE

	High	Low	Change	Settle
APR	N/A			
JUN	N/A			
AUG	N/A			

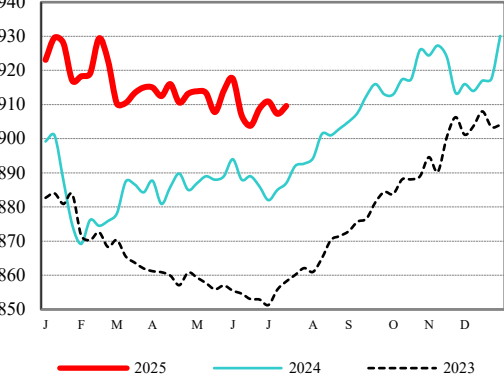
CME FEEDER CATTLE

	High	Low	Change	Settle
APR	N/A			
MAY	N/A			
AUG	N/A			

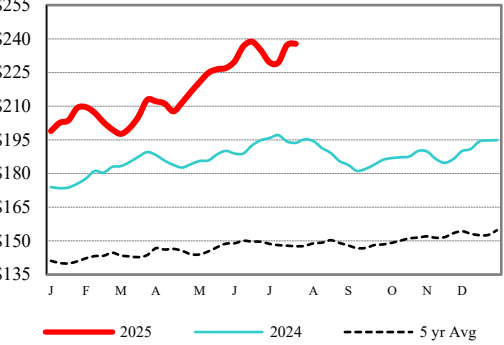
Weekly Choice Cutout



LMR Steer/Heifer Dressed Weights



5 Area Weekly Wtd Avg Steer Price



Weekly Ch/Se Spread

