

[AMS 2453/LM XB403](#)

DAILY ESTIMATED CUTOUT VALUES

	Choice 600-900#	Select 600-900#	Choice/Select Spread
Current Cutout Values:	217.16	206.99	10.17
Change from prior day:	(-0.56)	0.57	
Primal Rib	381.45	348.51	
Primal Chuck	176.04	172.82	
Primal Round	169.57	169.06	
Primal Loin	294.29	272.15	
Primal Brisket	162.03	146.64	
Primal Short Plate	137.21	137.21	
Primal Flank	100.20	103.80	

Fresh 50% Trimmings 15 Loads @ 49.41

[AMS 2829/NW LS441](#)

USDA BY-PRODUCT DROP VALUE (STEER) - DAILY

8.12 Change: unchanged

[AMS 2466/LM CT100](#)

5 AREA WEEKLY ACCUMULATED WEIGHTED AVG CATTLE PRICE

As of 10:00 am	Head Count	Avg Weight	Avg Price
Live Steer	0	0	0.00
Live Heifer	0	0	0
Dressed Steer	0	0	0.00
Dressed Heifer	0	0	0.00

[AMS 3208/SJ LS710](#)

ESTIMATED DAILY CATTLE SLAUGHTER

Today (est)	120,000	
Week Ago (est)	121,000	
Year Ago (act)	118,000	
Week to Date	238,000	
Same Period Last Week	241,000	
Same Period Last Year	234,000	Monday
Previous Day Estimated	Steer and Heifer 95,000	Cow and Bull 23,000

[AMS 3209/SJ LS712](#)

BEEF PRODUCTION	9/26/2020 (Estimate)	Last Week (Estimate)	Last Year (Actual)
Slaughter	651,000	645,000	650,000
Live Weights	1376	1372	1358
Dressed Weights	842	839	826
Beef Production (millions of pounds)	546.6	540.1	535.9

[AMS 2825/NW LS410](#)

USDA BEEF CARCASS PRICE EQUIVALENT INDEX VALUE

	Choice 600-900#	Select 600-900#	Dressing percent:	
			Steer	Heifer
Change	\$180.93	\$170.44	64.29	64.29
	(-0.28)	0.29		

[AMS 2455/LM XB405](#)

USDA NATIONAL CUTTER COW CARCASS CUTOUT

183.66 (-0.17) 90% lean: 211.07

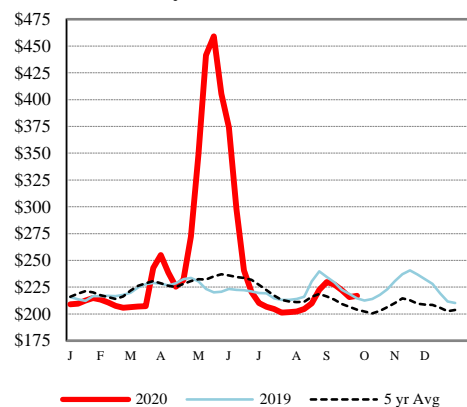
[CME LIVE CATTLE](#)

	High	Low	Change	Settle
OCT	109.23	108.30	0.95	108.90
DEC	113.55	111.98	1.48	113.13
FEB	116.63	115.28	1.20	116.23

[CME FEEDER CATTLE](#)

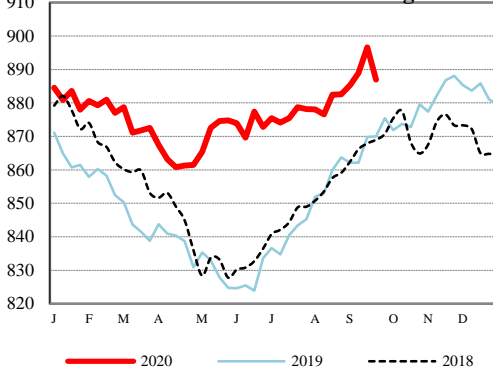
	High	Low	Change	Settle
OCT	143.65	140.98	2.00	142.93
NOV	144.55	141.35	2.68	143.78
JAN	142.45	139.40	2.53	141.68

Weekly Choice Cutout



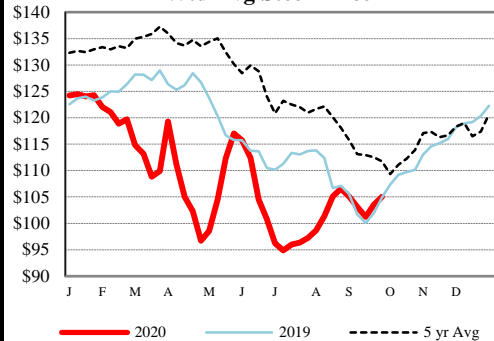
— 2020 — 2019 - - - 5 yr Avg

LMR Steer/Heifer Dressed Weights



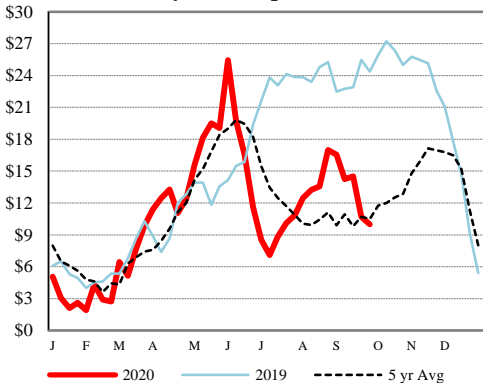
— 2020 — 2019 - - - 2018

5 Area Weekly Wtd Avg Steer Price



— 2020 — 2019 - - - 5 yr Avg

Weekly Ch/Se Spread



— 2020 — 2019 - - - 5 yr Avg