

AMS 2453/LM XB403

DAILY ESTIMATED CUTOUT VALUES

| | Choice | Select | | |
|------------------------|----------|----------|----------------------|-----|
| | 600-900# | 600-900# | Choice/Select Spread | |
| Current Cutout Values: | 373.28 | 353.84 | 19.44 | |
| Change from prior day: | 0.43 | (-4.07) | | |
| Primal Rib | 507.10 | 454.48 | | |
| Primal Chuck | 304.85 | 302.53 | Load Count: | |
| Primal Round | 322.40 | 314.98 | Total | 139 |
| Primal Loin | 503.75 | 453.86 | Choice | 73 |
| Primal Brisket | 325.83 | 320.26 | Select | 38 |
| Primal Short Plate | 304.52 | 304.52 | Trimming | 14 |
| Primal Flank | 249.64 | 243.51 | Grinds | 13 |

Fresh 50% Trimmings 14 Loads @ 254.88

AMS 2829/NW LS441

USDA BY-PRODUCT DROP VALUE (STEER) - DAILY

11.68 Change: UNCH

AMS 2466/LM CT100

5 AREA WEEKLY ACCUMULATED WEIGHTED AVG CATTLE PRICE

| As of 10:00 am | Head Count | Avg Weight | Avg Price |
|----------------|------------|------------|-----------|
| Live Steer | 819 | 1,369 | 231.73 |
| Live Heifer | 372 | 1,382 | 233.43 |
| Dressed Steer | 87 | 918 | 376.20 |
| Dressed Heifer | | | |

AMS 3208/SJ LS710

DAILY CATTLE SLAUGHTER

| | |
|-----------------------|--|
| Today | 115,000 |
| Week Ago | 115,000 |
| Year Ago (act) | 115,500 |
| Week to Date | 458,000 |
| Same Period Last Week | 464,000 |
| Same Period Last Year | 478,053 |
| Previous Day | Steer and Heifer 94,000 Cow and Bull 19,000 |

AMS 3209/SJ LS712

| BEEF PRODUCTION | 7/12/2025 | Last Week | |
|--------------------------------------|------------|------------|----------|
| | (Estimate) | (Estimate) | (Actual) |
| Slaughter | 568,000 | 474,000 | 605,000 |
| Live Weights | 1,411 | 1,412 | 1,382 |
| Dressed Weights | 866 | 865 | 842 |
| Beef Production (millions of pounds) | 491 | 409 | 508 |

AMS 2825/NW LS410

USDA BEEF CARCASS PRICE EQUIVALENT INDEX VALUE

| | Choice | Select | Dressing percent: | |
|--------|----------|----------|-------------------|--------|
| | 600-900# | 600-900# | Steer | Heifer |
| | \$361.12 | \$343.29 | 63.42 | 63.30 |
| Change | 0.22 | (-2.02) | | |

AMS 2455/LM XB405

USDA NATIONAL CUTTER COW CARCASS CUTOUT

325.67 (-0.41) 90% lean: 417.84

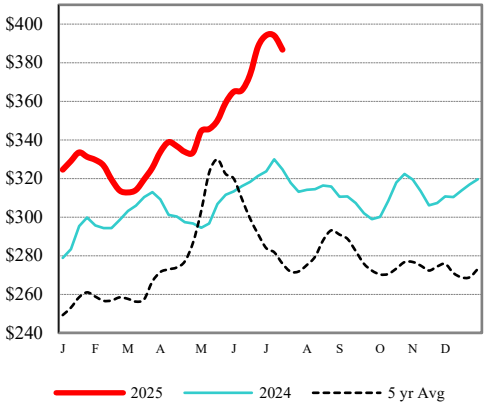
CME LIVE CATTLE

| | High | Low | Change | Settle |
|-----|------|-----|--------|--------|
| APR | N/A | | | |
| JUN | N/A | | | |
| AUG | N/A | | | |

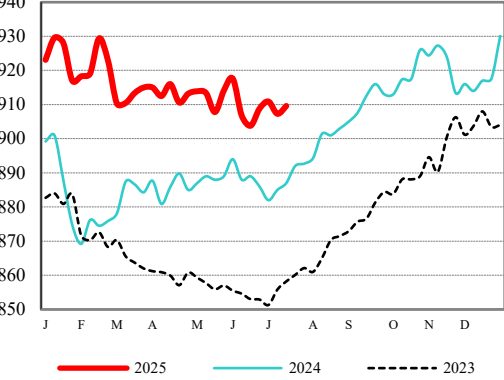
CME FEEDER CATTLE

| | High | Low | Change | Settle |
|-----|------|-----|--------|--------|
| APR | N/A | | | |
| MAY | N/A | | | |
| AUG | N/A | | | |

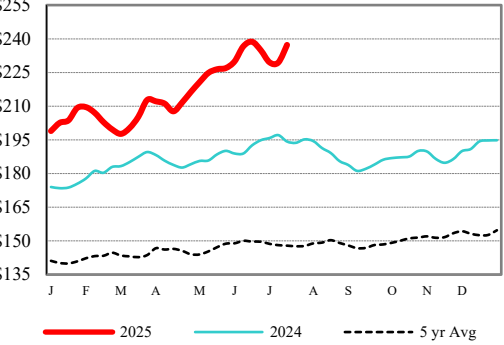
Weekly Choice Cutout



LMR Steer/Heifer Dressed Weights



5 Area Weekly Wtd Avg Steer Price



Weekly Ch/Se Spread

