

AMS 2453/LM XB403

DAILY ESTIMATED CUTOUT VALUES

	Choice	Select		
	600-900#	600-900#	Choice/Select Spread	
Current Cutout Values:	367.73	346.85	20.88	
Change from prior day:	1.05	1.98		
Primal Rib	526.95	459.47		
Primal Chuck	302.79	301.18	Load Count:	
Primal Round	322.31	321.44	Total 91	
Primal Loin	478.02	423.33	Choice 58	
Primal Brisket	317.63	299.49	Select 23	
Primal Short Plate	292.47	292.47	Trimming 0	
Primal Flank	236.35	236.49	Grinds 10	

Fresh 50% Trimmings 0 Loads @ 0.00

AMS 2829/NW LS441

USDA BY-PRODUCT DROP VALUE (STEER) - DAILY

11.73 Change: unch

AMS 2466/LM CT100

5 AREA WEEKLY ACCUMULATED WEIGHTED AVG CATTLE PRICE

As of 10:00 am	Head Count	Avg Weight	Avg Price
Live Steer	21,997	1,491	239.38
Live Heifer	6,684	1,334	237.99
Dressed Steer	8,909	981	379.50
Dressed Heifer	1,232	845	379.22

AMS 3208/SJ LS710

DAILY CATTLE SLAUGHTER

Today	108,000	
Week Ago	105,000	
Year Ago (act)	114,308	
Week to Date	108,000	
Same Period Last Week	105,000	
Same Period Last Year	114,308	
Previous Day	Steer and Heifer	Saturday
	Cow and Bull	
	76,000	4,000
	20,000	1,000

AMS 3209/SJ LS712

	7/26/2025	Last Week	
BEEF PRODUCTION	(Estimate)	(Estimate)	(Actual)
Slaughter	549,000	563,000	605,000
Live Weights	1,410	1,411	1,384
Dressed Weights	866	867	846
Beef Production (millions of pounds)	474	487	511

AMS 2825/NW LS410

USDA BEEF CARCASS PRICE EQUIVALENT INDEX VALUE

	Choice	Select	Dressing percent:	
	600-900#	600-900#	Steer	Heifer
	\$359.83	\$338.47	63.65	63.53
Change	0.46	(-0.93)		

AMS 2455/LM XB405

USDA NATIONAL CUTTER COW CARCASS CUTOUT

325.59 0.01 90% lean: 418.36

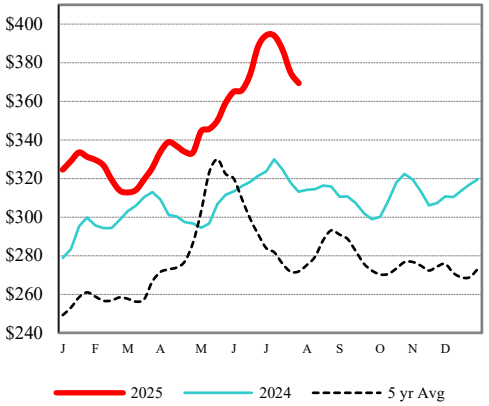
CME LIVE CATTLE

	High	Low	Change	Settle
APR	N/A			
JUN	N/A			
AUG	N/A			

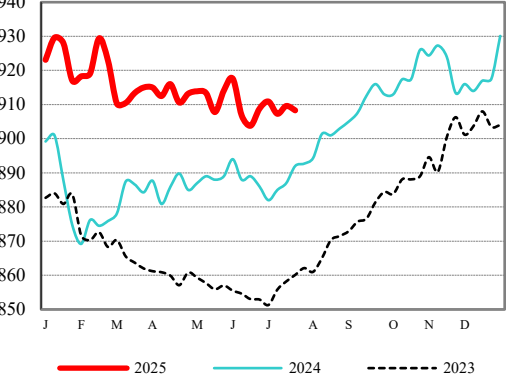
CME FEEDER CATTLE

	High	Low	Change	Settle
APR	N/A			
MAY	N/A			
AUG	N/A			

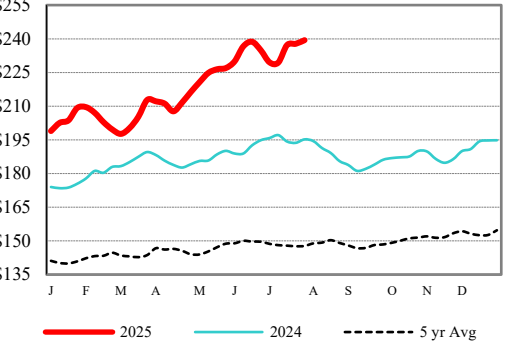
Weekly Choice Cutout



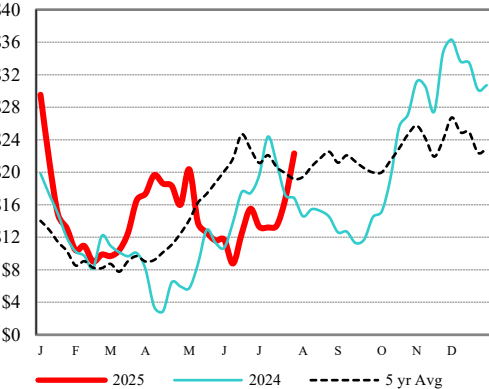
LMR Steer/Heifer Dressed Weights



5 Area Weekly Wtd Avg Steer Price



Weekly Ch/Se Spread



USDA Livestock, Poultry & Grain Market News

Des Moines, Iowa | PH 515-284-4460

Email: Desm.LPGMN@usda.gov

<https://mymarketnews.ams.usda.gov/viewReport/2870>

USDA AMS Livestock, Poultry & Grain Market News