



Sugar and Sweeteners Outlook

Outlook

SSS-M-367 | March 14, 2019

Next release is April 15, 2019

Michael McConnell, coordinator
David Olson, contributor

Projected Ending Stocks Reduced for 2018/19 due to Lowered Supplies

The March *World Agricultural Supply and Demand Estimates* (WASDE) project U.S. sugar ending stocks for 2018/19 at 1.668 million short tons, raw value (STRV), a 128,000-STRV reduction from the previous month. Domestic production projections are raised 86,000 STRV, as more beet sugar production is slightly offset by lower cane sugar production. Projected imports are 214,000 STRV lower than the February report, primarily due to fewer imports from Mexico. No changes are made to total use for 2018/19.

Mexico's sugarcane harvest is in full swing, with projected production raised 127,000 metric tons, actual value (MT) from the previous report. Domestic deliveries are raised 201,000 MT based on the pace of domestic deliveries for human consumption reported through January. The increase in domestic deliveries is partially offset by a 164,000-STRV reduction in exports, primarily due to the lower expected shipments to the United States.

U.S. Domestic Outlook

Favorable Sugarbeet Storage Conditions Raise Beet Sugar Production

Total U.S. sugar supplies for 2018/19 are projected to be 13.973 million short tons, raw value (STRV) in the March 2019 *World Agricultural Supply and Demand Estimates* (WASDE). This is a 128,000-STRV reduction from the February report, with lower imports more than offsetting higher domestic production.

Table 1: U.S. sugar: supply and use, by fiscal year (Oct./Sept.), March 2019

Items	2016/17	2017/18 (estimate)	2018/19 (forecast)	2016/17	2017/18 (estimate)	2018/19 (forecast)
	1,000 Short tons, raw value			1,000 Metric tons, raw value		
Beginning stocks	2,054	1,876	2,008	1,863	1,702	1,822
Total production	8,969	9,293	9,103	8,137	8,430	8,258
Beet sugar	5,103	5,279	5,004	4,629	4,789	4,540
Cane sugar	3,866	4,014	4,099	3,507	3,641	3,718
Florida	2,055	1,983	2,078	1,864	1,799	1,885
Louisiana	1,628	1,862	1,875	1,477	1,689	1,701
Texas	140	169	145	127	153	132
Hawaii	43	0	0	39	0	0
Total imports	3,244	3,277	2,862	2,943	2,973	2,596
Tariff-rate quota imports	1,611	1,663	1,560	1,462	1,509	1,415
Other program imports	419	326	350	380	296	318
Non-program imports	1,213	1,287	952	1,101	1,168	863
Mexico	1,201	1,223	897	1,090	1,110	813
Total supply	14,267	14,445	13,973	12,943	13,105	12,676
Total exports	95	170	35	86	154	32
Miscellaneous	38	82	0	35	75	0
Deliveries for domestic use	12,258	12,185	12,270	11,121	11,054	11,131
Transfer to sugar-containing products for exports under re-export program	127	110	120	115	100	109
Transfer to polyhydric alcohol, feed, other alcohol	29	28	25	27	25	23
Commodity Credit Corporation (CCC) sale for ethanol, other	0	0	0	0	0	0
Deliveries for domestic food and beverage use	12,102	12,048	12,125	10,979	10,930	11,000
Total use	12,391	12,438	12,305	11,241	11,283	11,163
Ending stocks	1,876	2,008	1,668	1,702	1,822	1,513
Private	1,876	2,008	1,668	1,702	1,822	1,513
Commodity Credit Corporation (CCC)	0	0	0	0	0	0
Stocks-to-use ratio	15.14	16.14	13.55	15.14	16.14	13.55

Source: USDA, Economic Research Service, Sugar and Sweetener Outlook.

Beet sugar production is raised 104,000 STRV from the previous month, totaling 5.004 million STRV. The increase is primarily due to a lower shrink rate forecast for this year's crop. Cold temperatures, particularly in the Northern Midwest growing regions, have facilitated good storage conditions for this year's crop. While many processors have reported some challenges warming up the sugarbeets to ideal temperatures for slicing—and have used various operational

techniques to deal with colder, more frozen sugarbeets—these challenges have been broadly described as physical challenges rather than chemical ones that would hamper sucrose extraction.

Table 2: Beet sugar production projection calculation,2018/19

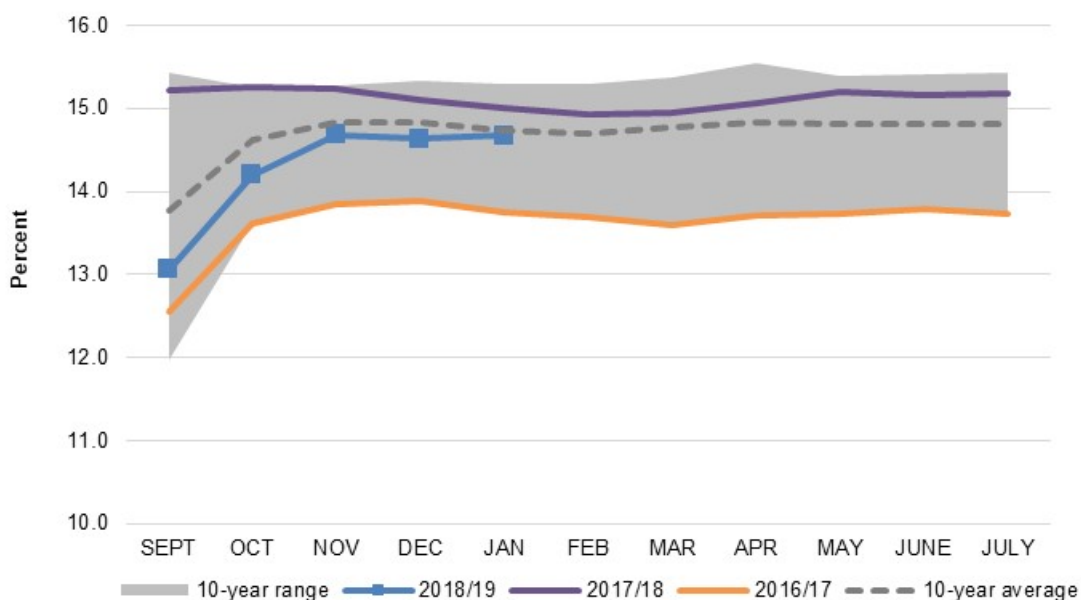
	2012/13	2013/14	2014/15	2015/16	2016/17	2017/18	2018/19 February	2018/19 March
Sugarbeet production (1,000 short tons) 1/	35,224	32,789	31,285	35,371	36,881	35,325	33,145	33,145
Sugarbeet shrink 2/	4.8%	6.8%	5.4%	6.5%	8.3%	7.3%	6.9%	5.0%
Sugarbeet sliced (1,000 short tons)	33,532	30,545	29,595	33,066	33,834	32,742	30,858	31,488
Sugar extraction rate from slice	15.3%	14.3%	14.6%	14.6%	13.7%	15.2%	14.7%	14.7%
Sugar from beets slice (1,000 STRV)	5,142	4,325	4,325	4,820	4,643	4,970	4,522	4,626
Sugar from molasses (1,000 STRV) 2/	327	324	341	380	352	368	368	368
Crop-year sugar production (1,000 STRV) 3/	5,469	4,648	4,667	5,201	4,995	5,338	4,890	4,994
August-September sugar production (1,000 STRV)	708	315	461	688	606	715	655	655
August-September sugar production forecast (1,000 STRV)	315	461	688	606	715	655	625	625
Sugar from imported beets (1,000 STRV) 4/	--	--	--	--	--	--	40	40
Fiscal year sugar production (1,000 STRV)	5,076	4,794	4,893	5,119	5,103	5,279	4,900	5,004

Notes: 1/ National Agricultural Statistics Service, U.S. Dept. of Agriculture. 2/Projections based on processor forecasts published by U.S. Dept. of Agriculture, Farm Service Agency. 3/ August-July basis. 4/ Sugar from imported beets split out for projections only, included in total once full crop-year slice is recorded. They are incorporated into total production in historical data.

Source: U.S. Dept. of Agriculture, Economic Research Service and World Agricultural Outlook Board.

This season's national sucrose extraction rate of sliced beets continues to be on target to achieve its long-term average. The latest processing data from the Farm Service Agency's (FSA) *Sweetener Market Data* (SMD) through January shows a 14.67 percent cumulative sucrose extraction rate from sugarbeets sliced since the beginning of the crop year in August. While some variation can exist between January and the end of the season, it is usually fairly stable once the January rate is established. Given the relatively smaller sugarbeet crop this year compared with the previous 3 years, processors are expecting to wrap up their slicing activities sooner than in recent years, when slicing continued well into the spring and early summer.

Figure 1
Cumulative sugar extraction rate, beet sugar produced per sugarbeet sliced, by crop year

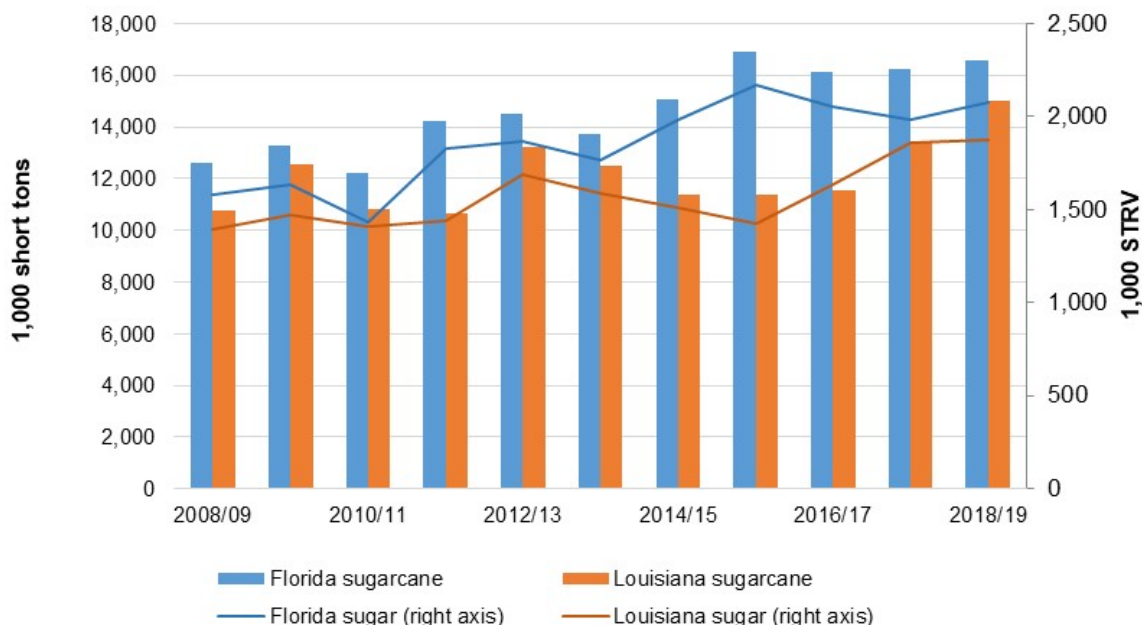


Source: U.S. Dept. of Agriculture, Economic Research Service and Farm Service Agency.

Cane sugar production is reduced 18,000 STRV from the February report, totaling 4.099 million STRV. Louisiana cane sugar production remains unchanged at 1.875 million STRV, as the harvest campaign concluded in January and expected September 2019 production is in line with the previous year. Florida production is reduced 13,000 STRV to 2.078 based on the latest forecasts provided by processors in the State. Despite the small decrease this month, processors report good weather conditions for this year's crop, with relatively warm temperatures throughout the winter; although a few rain events slowed the pace of the harvest and slightly reduced yields in some areas. Texas production is reduced 5,000 STRV to 145,000 STRV, also based on the latest forecasts from the region's processor.

The USDA's National Agricultural Statistics Service (NASS) published updated sugarcane production figures for 2018/19. According to NASS, 859,000 acres of sugarcane are forecast to be harvested for sugar production in the United States for 2018/19, down slightly from the previous month's forecast of 860,600 acres. National yield forecasts are increased from 38.1 short tons per acre in February to 38.3 in March, raising sugarcane production compared with the previous month's forecast. In Florida, some rainy conditions have impacted certain growers, reflected by the NASS reduction of yields. Louisiana sugarcane production for sugar is currently forecast to be 9.9 percent larger than the 2017/18 record production total, due to both higher acres and increased yields.

Figure 2
Sugarcane and sugar production, Florida and Louisiana, 2007/08 to 2018/19

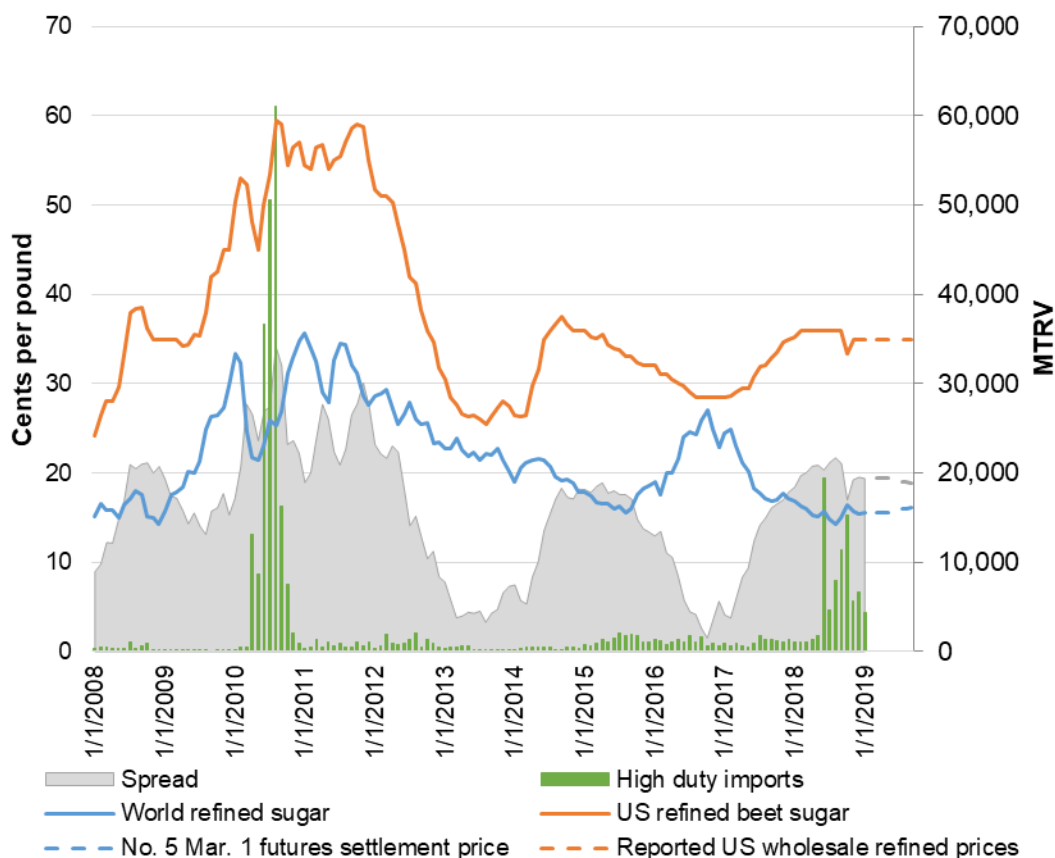


Source: U.S. Department of Agriculture, National Agricultural Statistics Service.

Projected Imports Lowered Due to Terms of the Suspension Agreement

U.S. sugar imports are projected to be 2.862 million STRV, a 214,000-STRV reduction from the previous month's forecast. The change is mostly due to lower imports expected from Mexico, given the updated parameters that determine Export Limit published by the U.S. Department of Commerce (USDOC). No changes are made to imports under quota programs, as the WTO raw sugar quota's shortfall is expected to remain at 99,000 STRV. Imports of high-duty rates are increased 10,000 STRV to 55,000 STRV. The increase is based on the pace to date. Through February, the Foreign Agricultural Service reports more than 35,000 STRV having entered at a high-duty rate. While the pace has not matched the high volumes in October—which were carried over from strong flows at the end of 2017/18—the volumes have remained well above the levels that typically entered on a monthly basis in previous years. The increase in projected imports reflects the continuation of the higher import level.

Figure 3
U.S. and World refined sugar prices, monthly, January 2008 to September 2019



Source: U.S. Department of Agriculture, Economic Research Service.

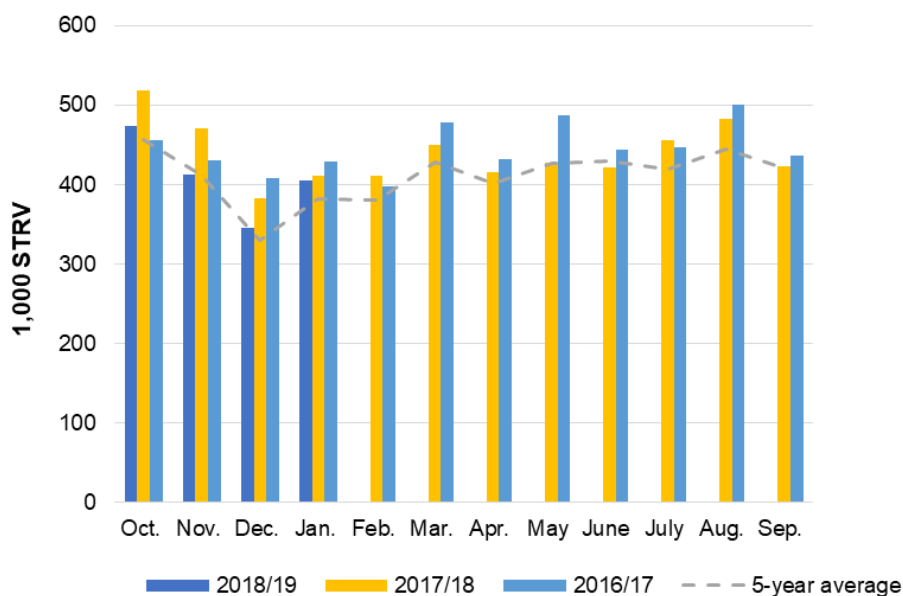
Imports from Mexico are projected to be 897,000 STRV, a 224,000-STRV reduction. The reduction reflects the difference between the calculation of U.S. Needs from the December 2018 WASDE and the Export Limit calculation from the March 2019 WASDE—as well as an additional 2,000 STRV of imports that entered in early October under licenses from the 2017/18 Export Limit Period. Based on the March WASDE, U.S. Needs would be 890,000 STRV (based on 100 percent of the U.S. Needs calculation). However, the Export Limit published by the USDOC in December was 895,000 STV (based on 80 percent of the calculated U.S. Needs). The terms of the Suspension Agreements dictate that the Export Limit cannot be lowered from one period to the next. This results in the current projection carrying over the Export Limit amount set in December, as well as the small amount entered in October.

Total Use Unchanged From Previous Month, Slight Increase Expected From 2017/18

Domestic deliveries for 2018/19 remain unchanged from the previous month, totaling 12.125 million STRV. This represents a 0.6-percent increase from 2017/18 totals. According to data through January from the SMD, total food and beverage deliveries in the United States are a slight 0.4-percent behind the pace set at the same time in 2017/18.

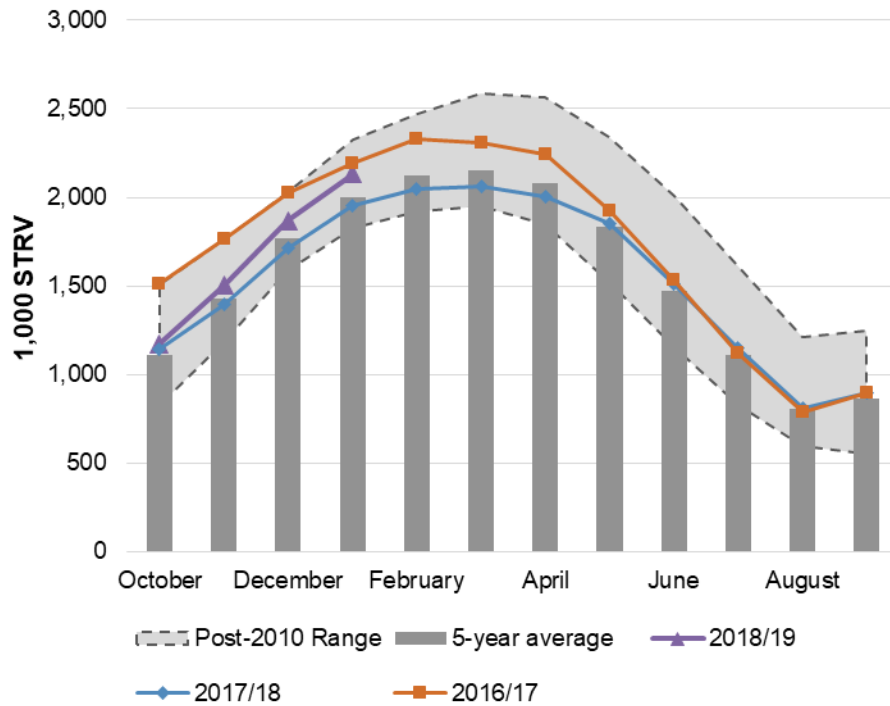
Deliveries from beet processors are 8.2 percent behind the same pace from 2017/18. Beet processor deliveries during the October-December quarter of 2017/18 remained large by historical standards, but were 10.2 percent lower than the record-setting mark of 2017/18. Seasonally, beet deliveries usually begin to pick up again during March. Beet processors' refined sugar inventory levels show volumes above the typical year, although the inventories do not appear burdensome through January.

Figure 4
Beet sugar deliveries, monthly, 2016/17 through 2018/19



Source: U.S. Department of Agriculture, Farm Service Agency.

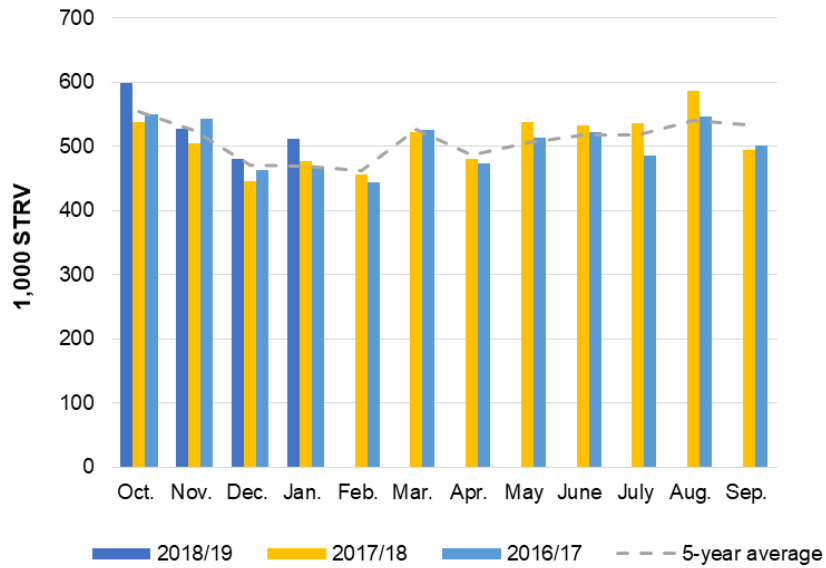
Figure 5
Sugarbeet processors' total sugar inventories, monthly, 2016/17 to 2018/19



Source: U.S. Department of Agriculture, Farm Service Agency.

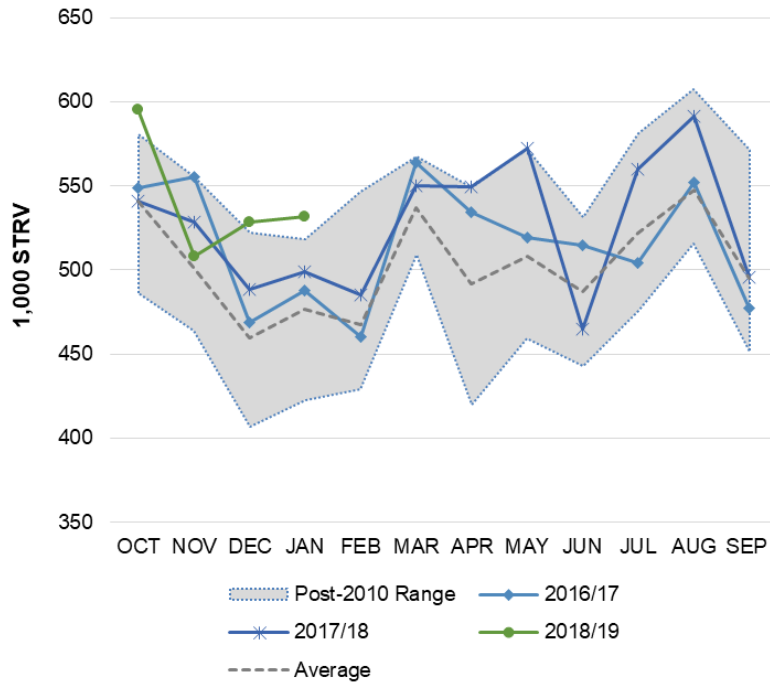
Deliveries by cane refiners are 7.7-percent larger through January than the previous year. In contrast to the beet sector, cane refiners have showed continued improvement from the sluggish pace seen in the previous 2 years. Melt rates, implied by data reported to the SMD by the industry, have been strong thus far in the year by historical standards. After several years of the sector's dealing with relatively tight raw sugar supplies, strong domestic production the past 2 years, complemented by imports, has brought raw sugar stocks levels to a relatively higher level. Most of the raw sugar stocks at the end of January were held by processors, which isn't usual for this time of year, but are relatively large due to the two-consecutive record production years from Louisiana. Refiners' raw inventories are close to historical averages—not nearly as low as they were in 2016/17.

Figure 6
Cane sugar deliveries, monthly, 2015/16 through 2018/19



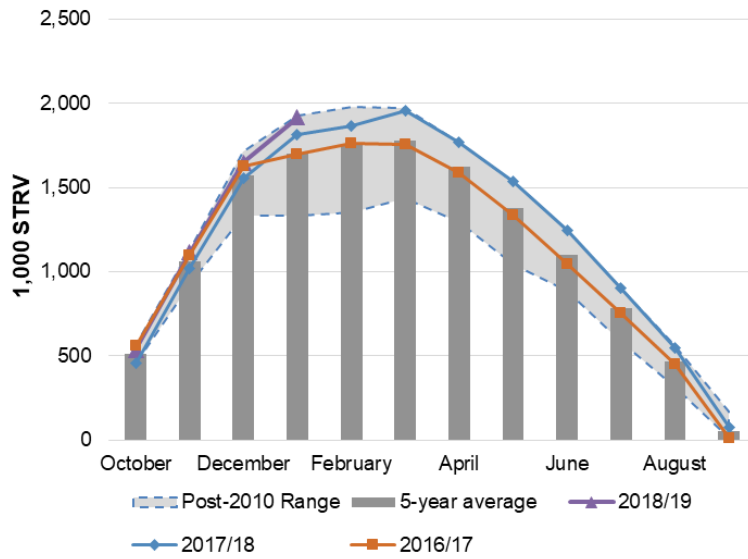
Source: U.S. Department of Agriculture, Farm Service Agency.

Figure 7
Sugarcane refiners melt, monthly, 2016/17 to 2018/19



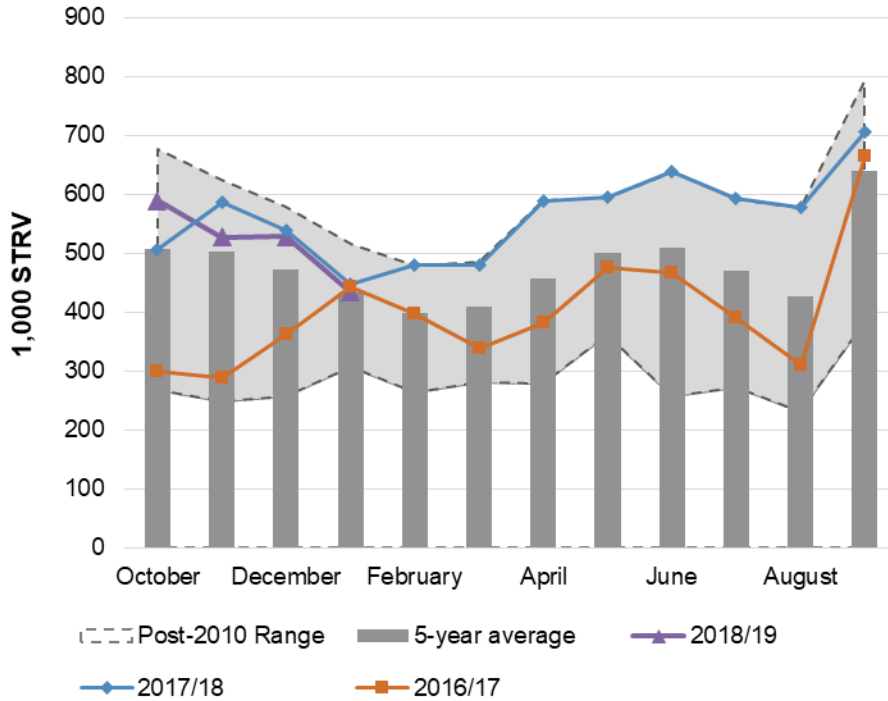
Source: U.S. Department of Agriculture, Farm Service Agency.

Figure 7
Sugarcane processors inventories, monthly, 2016/17 to 2018/19



Source: U.S. Department of Agriculture, Farm Service Agency.

Figure 8
Sugarcane refiners raw sugar inventories, monthly, 2016/17 to 2018/19



Source: U.S. Department of Agriculture, Farm Service Agency.

Lower Supplies Result in Lower Ending Stocks for 2018/19

Ending stocks for 2018/19 are projected to be 1.668 million STRV. The 128,000-STRV reduction from the previous month is due to the reduction in projected total supplies, along with no changes in use. The resulting stocks-to-use is projected to be 13.6 percent, which would be a substantial reduction from the 2017/18 estimate of 16.1 percent, if realized.

Mexico Outlook

Delivery Pace for Sugar and HFCS In Line with Longer-Term Trends Through January

Mexico's 2018/19 sugarcane harvest campaign has progressed at a steady rate into the peak of the season. Total supplies for 2018/19 are projected to be 7.617 million metric tons, actual value (MT). Projected total use is also increased from the previous month, but only by 38,000 MT, resulting in lower ending stocks expected for the year.

Table 3: Mexico sugar supply and use, 2016/17 - 2017/18 and projected 2018/19, March 2019

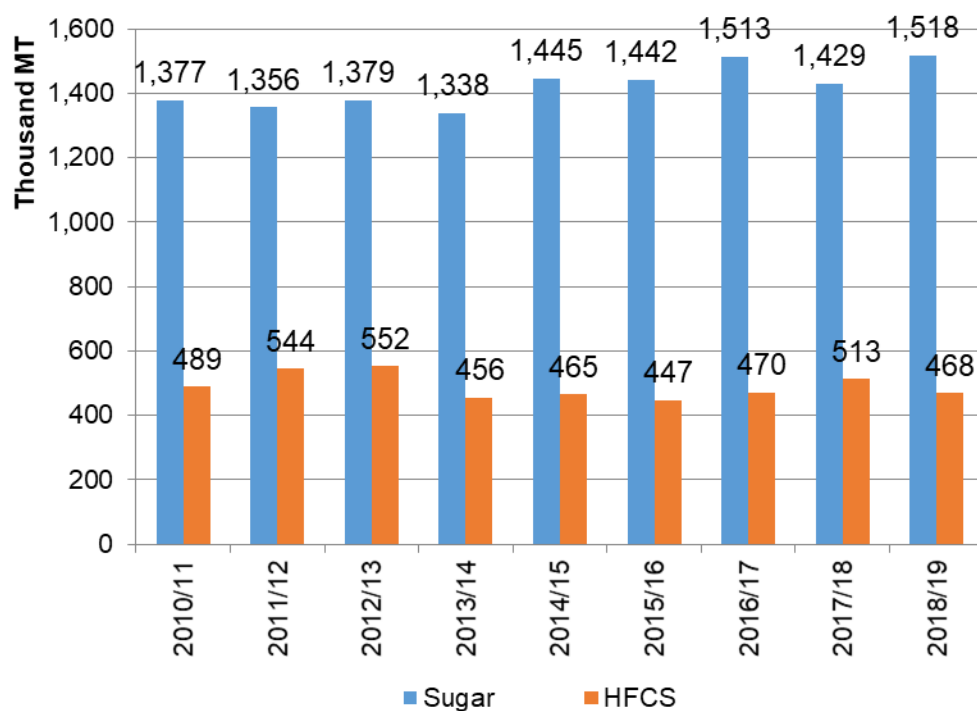
Items	2016/17	2017/18 (estimate)	2018/19 (forecast)
	1,000 metric tons, actual weight		
Beginning stocks	1,037	1,002	1,395
Production	5,957	6,010	6,152
Imports	93	220	70
Imports for consumption	48	132	20
Imports for sugar-containing product exports, IMMEX 1/, other	45	88	50
Total supply	7,087	7,232	7,617
Disappearance			
Human consumption	4,515	4,228	4,615
For sugar-containing product exports (IMMEX)	397	482	480
Other deliveries and end-of-year statistical adjustment	-61	29	0
Total	4,851	4,739	5,095
Exports	1,234	1,099	1,102
Exports to the United States & Puerto Rico	1,028	1,047	767
Exports to other countries	205	52	335
Total use	6,085	5,838	6,197
Ending stocks	1,002	1,395	1,420
	1,000 metric tons, raw value		
Beginning stocks	1,099	1,062	1,478
Production	6,315	6,370	6,522
Imports	98	234	74
Imports for consumption	51	140	21
Imports for sugar-containing product exports (IMMEX)	47	93	53
Total supply	7,512	7,666	8,074
Disappearance			
Human consumption	4,786	4,482	4,892
For sugar-containing product exports (IMMEX)	420	510	509
Other deliveries and end-of-year statistical adjustment	-64	31	0
Total	5,142	5,023	5,400
Exports	1,308	1,165	1,168
Exports to the United States & Puerto Rico	1,090	1,110	813
Exports to other countries	218	55	355
Total use	6,450	6,188	6,569
Ending stocks	1,062	1,478	1,505
Stocks-to-human consumption (percent)	22.2	33.0	30.8
Stocks-to-use (percent)	16.5	23.9	22.9
High fructose corn syrup (HFCS) consumption (dry weight)	1,522	1,593	1,555

1/ IMMEX = Industria Manufacturera, Maquiladora y de Servicios de Exportación.

Source: USDA, *World Agricultural Supply and Demand Estimates* and Economic Research Service, Sugar and Sweeteners Outlook; Conadesuca.

Domestic deliveries for human consumption are projected to be 4.615 million MT, a 201,000-million MT increase. Through January, Conadesuca reports sugar deliveries 6.2 percent higher than the previous year. The previous year was marked by a slow pace of domestic shipments from the beginning of the year, likely due in part to high sugar prices. The current 2018/19 delivery pace for both sugar and high-fructose corn syrup (HFCS) appear to be in line with the volumes seen in 2016/17, however, suggesting that 2017/18 was an outlier from historical trends. As a result, estimates of raised deliveries in 2018/19 are based on per capita sweetener deliveries returning to levels consistent with 2 years ago. Likewise, deliveries of HFCS are reduced 53,000 MT to 1.555 million MT.

Figure 9
Mexican sweetener consumption October to January, 2010/11 to 2018/19



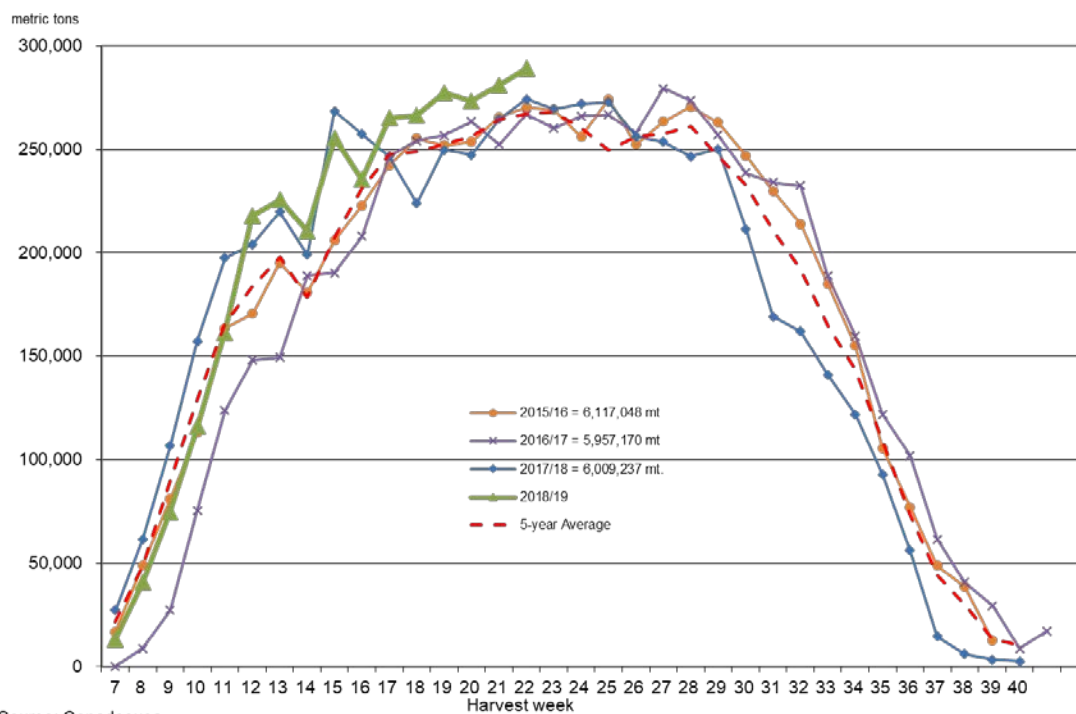
Source: Conadesuca.

Strong Results for the Mexican Sugarcane Harvest Raise Production Prospects

Projected production in Mexico for 2018/19 is raised 127,000 MT, totaling 6.152 million MT. If realized, this would be a 2.4-percent increase from the 2017/18 total. The harvest did not begin as quickly as the previous year, but the pace has picked up as it hits the peak production period after the beginning of the year. Data reported by Conadesuca show strong weekly sugarcane

and sugar production figures thus far in the campaign. Through March 2, 2019, Mexico has harvested nearly 385,000 hectares—still slightly behind last year’s total of 388,000 hectares, but that gap has narrowed in the past few weeks. Despite less area harvested, cane production is ahead of the previous year due to strong sugarcane yields. Mexican mills have produced 3.205 million MT through March 2, which is 0.1 percent behind the previous year, but the gap has narrowed substantially the past few weeks, mirroring the trend in area harvested.

Figure 10
Mexico sugar production, by week of harvest, 2015/16-2018/19



Source: Conadesuca.

Mexico exports are projected at 1.102 million MT, a 164,000-MT reduction from the previous month’s projection. Exports to the United States are projected to total 767,000 MT, a 191,000-MT reduction from the February report. The total reflects the terms of the Suspension Agreement.

Exports to other countries are projected to total 335,000 MT, partially offsetting the reduction in U.S. exports by 28,000 MT. Through February 24, 2019, Conadesuca reports that 325,000 MT of exports have been shipped, including 45,000 MT to the U.S. re-export program and 258,000 MT shipped as part of the FIMAE certificate program, which shipped supplies from the 2017/18 production year. Conadesuca has listed an additional 291,000 MT in the certificate program at the end of February, indicating that 2018/19 supplies have begun to enter the program.

Currently, WASDE projections assume that additional shipments through the program are unlikely to occur until the 2019/20 marketing year.

Suggested Citation

McConnell, Michael J. and David Olson, *Sugar and Sweeteners Outlook*, SSS-M-367, U.S. Department of Agriculture, Economic Research Service, March 14, 2019

Contacts & Additional Information

Contact		E-mail
Michael McConnell (coordinator)	(202) 694-5184	michael.mccconnell@ers.usda.gov

Subscribe to ERS e-mail notification service at [https://www Telephone.ers.usda.gov/subscribe-to-ers-e-newsletters/](https://www.Telephone.ers.usda.gov/subscribe-to-ers-e-newsletters/) to receive timely notification of newsletter availability.

Data

Tables from the *Sugar and Sweeteners Yearbook* are available in the Sugar and Sweeteners Topics at <http://www.ers.usda.gov/topics/sugar/>. They contain the latest data and historical information on the production, use, prices, imports, and exports of sugar and sweeteners.

Related Websites

Sugar and Sweeteners Outlook <http://www.ers.usda.gov/Publications/SSS/>
WASDE <http://usda.mannlib.cornell.edu/MannUsda/viewDocumentInfo.do?documented=1194>
Sugar Topics <http://www.ers.usda.gov/topics/Sugar/>

E-mail Notification

Readers of ERS outlook reports have two ways they can receive an e-mail notice about release of reports and associated data.

- Receive timely notification (soon after the report is posted on the web) via USDA's Economics, Statistics and Market Information System (which is housed at Cornell University's Mann Library). Go to <http://usda.mannlib.cornell.edu/MannUsda/aboutEmailService.do> and follow the instructions to receive e-mail notices about ERS, Agricultural Marketing Service, National Agricultural Statistics Service, and World Agricultural Outlook Board products.
- Receive weekly notification (on Friday afternoon) via the ERS website. Go to <http://www.ers.usda.gov/Updates/> and follow the instructions to receive notices about ERS outlook reports, *Amber Waves* magazine, and other reports and data products on specific topics. ERS also offers RSS (really simple syndication) feeds for all ERS products. Go to <http://www.ers.usda.gov/rss/> to get started.