



## National Monthly Grass Fed Beef Report

Agricultural Marketing Service

Fri. June 27th, 2025

Livestock, Poultry & Grain Market News

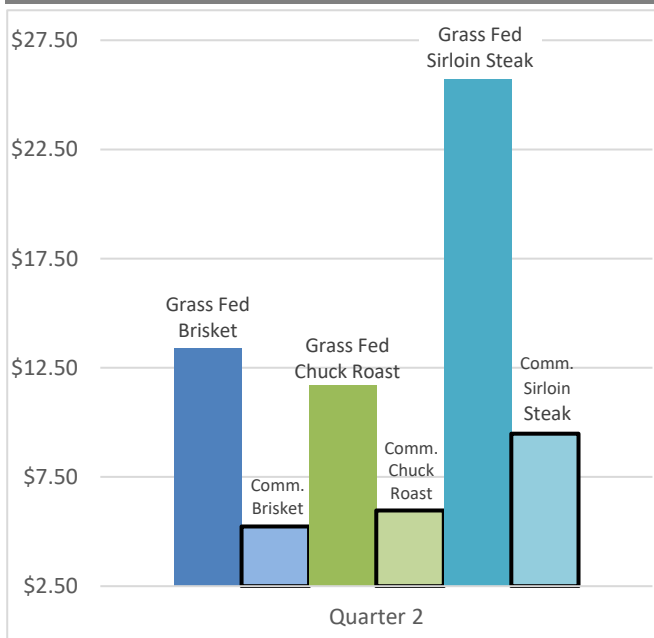
\*\*\*This report will be published quarterly beginning September 26, 2025. The September report will include data from July-September. No further monthly reports will be released. Any questions or concerns can be emailed to [mymarketnews@usda.gov](mailto:mymarketnews@usda.gov).\*\*\*

### Grass Fed Beef - Direct to Consumer (Retail)

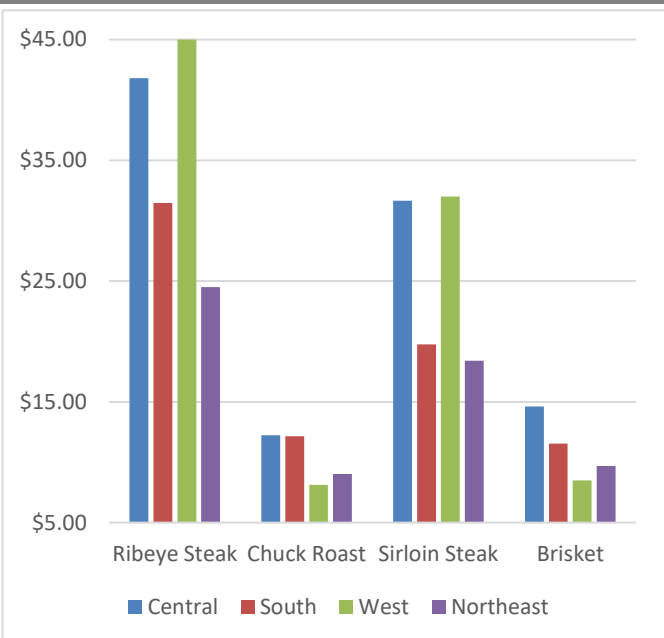
Carcass Purchase Size	(\$/lb)	Avg
Whole	7.00 - 11.25	8.95
Half	7.00 - 12.00	10.24
Quarter	9.00 - 12.59	11.55

Item Description	(\$/lb)	Avg	Commodity Beef*	Grassfed Premium**
Ribeye Steak	24.50 - 52.13	38.46	12.91	25.55
Ribeye Roast	34.44 - 38.87	36.12	14.00	22.12
Chuck Roast	8.00 - 15.00	11.70	5.96	5.74
Flat Iron Steak	15.44 - 35.99	25.08	9.31	15.77
Rump Roast	12.00 - 14.00	12.68	6.49	6.19
Bottom Round Roast	11.45 - 27.86	17.29	5.60	11.69
Filet Mignon	52.99 - 88.40	75.47	22.89	52.58
Tenderloin	45.00 - 72.96	61.26	13.14	48.12
Tri Tip	11.86 - 24.95	18.44	6.41	12.03
Sirloin Steak	15.49 - 36.50	25.69	9.49	16.21
Sirloin Roast	15.99 - 16.99	16.63	6.99	9.64
Brisket	8.50 - 25.55	13.41	5.23	8.18
Flank Steak	14.50 - 36.14	23.45	11.72	11.73
Skirt Steak	15.00 - 34.99	21.46	10.77	10.70
Short Ribs	10.99 - 19.99	13.72	8.53	5.19
Stew Meat	9.50 - 13.55	11.90	7.14	4.76

### Direct Grass Fed Vs. Commodity



### Direct Grass Fed Average Price by Region



Region Breakout: Central: ND, SD, NE, KS, MO, IA, MN, WI, MI, OH, WV, IN, IL; Northeast: ME, MA, NH, VT, NY, PA, MD, DE, NJ, CT, RI; Southern: OK, KY, TN, VA, AR, TX, LA, MS, AL, GA, FL, NC, SC; Western: WA, OR, CA, NV, AZ, NM, CO, WY, MT, ID, UT, AK, HI

\* Prices averaged from the National Retail Beef Activity Report

\*\* The difference in commodity retail beef prices and grass fed retail beef prices.

Source: USDA Livestock, Poultry, and Grain Market News

Des Moines, Iowa | 515-284-4460 | [desm.lpgmn@ams.usda.gov](mailto:desm.lpgmn@ams.usda.gov)

[www.ams.usda.gov/LPSMarketNewsPage](http://www.ams.usda.gov/LPSMarketNewsPage)