

### Hogs and Pork

	Current Week	Change From Past Week	Change From Past Year
Nat'l Purchased Carc Wtd Avg Price - Barrows & Gilts (\$/cwt)	80.44	3.4%	38.3%
Pork Carcass Cutout FOB Plant (\$/cwt)	86.35	-0.9%	26.7%
Segregated Early Weaned (SEW) Feeder Pigs (\$/head)	65.19	-1.0%	93.8%
Iowa/So. Minn Avg Weight Barrows & Gilts (lbs)	286.1	-0.1%	0.0%
Est. Hog Slaughter	2,341,000	-1.6%	-0.6%
YTD Est. Hog Slaughter	41,278,000	N/A	2.2%
Est. Pork Production (mil lbs)	502.1	-1.6%	-0.5%
YTD Est. Pork Production (mil lbs)	8,855.7	N/A	2.4%

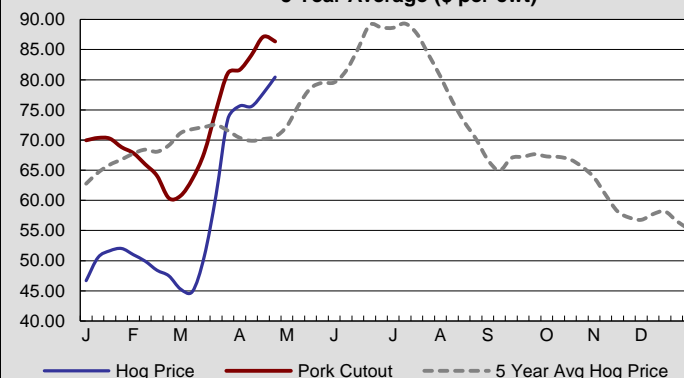
### Cattle and Beef

Live Wtd Avg Steer Price, 5 Area FOB (\$/cwt)	126.69	-1.3%	2.4%
Dressed Wtd Avg Steer Price, 5 Area Del (\$/cwt)	204.58	-1.5%	4.3%
Boxed Beef Cutout, Choice (\$/cwt)	233.49	0.4%	6.8%
Boxed Beef Cutout, Select (\$/cwt)	220.67	0.1%	8.6%
Boxed Beef, Choice/Select Spread (\$/cwt)	12.82	0.82	-2.66
By-Product Drop Value, Steer (\$/cwt live)	8.91	-2.3%	-7.5%
CME Feeder Cattle Index (\$/cwt)	144.24	-0.5%	5.6%
Texas Avg Live Weight Slaughter Cattle (lbs)	1,279.0	-0.3%	-1.8%
Texas Percent Slaughter Heifers	36%	-7.7%	16.1%
Est. Cattle Slaughter	643,000	0.3%	2.4%
YTD Est. Cattle Slaughter	10,358,000	N/A	1.2%
Est. Beef Production (mil lbs)	516.5	0.5%	3.4%
YTD Est. Beef Production (mil lbs)	8,365.9	N/A	-0.1%

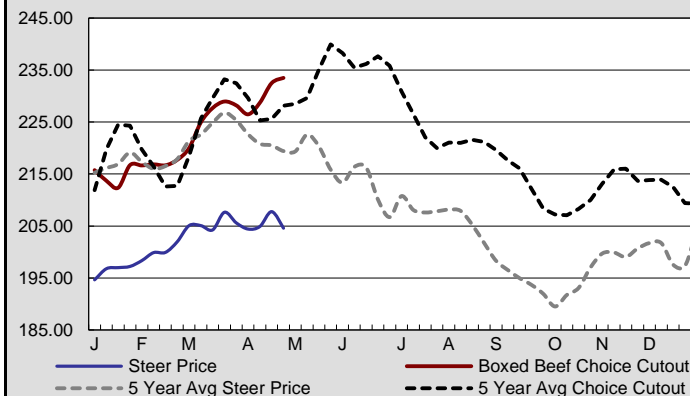
### Lamb and Veal

Slaughter Lamb, Comprehensive, Carc. Wtd Avg Price (\$/cwt)	296.12	1.1%	6.6%
Lamb Carcass Cutout (\$/cwt)	335.49	1.7%	0.4%
Est. Sheep Slaughter	41,000	0.0%	10.8%
YTD Est. Sheep Slaughter	655,000	N/A	0.9%
Est. Lamb Production (mil lbs)	2.9	0.0%	7.4%
YTD Est. Lamb Production (mil lbs)	45.5	N/A	-3.0%
Veal Carcass Wtd Avg Non-Packer Owned (\$/cwt)	308.98	-0.2%	0.0%
Veal Carcass Wtd Avg Packer Owned (\$/cwt)	300.23	-0.3%	-2.7%

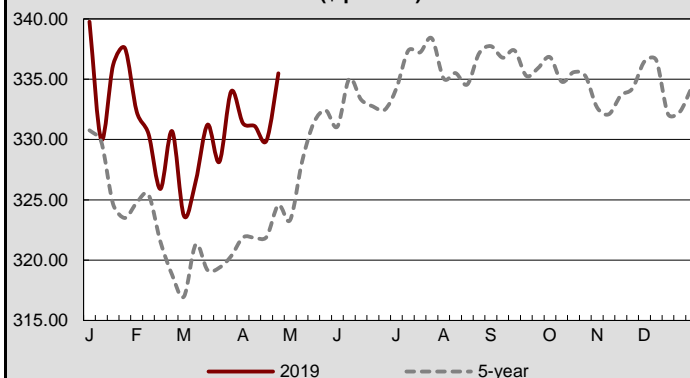
**Weekly Barrow & Gilt Price and Weekly Pork Cutout vs. 5 Year Average (\$ per cwt)**



**Weekly Dressed Steer Price and Weekly Boxed Beef Choice Cutout vs. 5 Year Averages (\$ per cwt)**



**Weekly Lamb Carcass Cutout vs 5 Year Average (\$ per cwt)**



### Grain

	Current Week	Change From Past Week	Change From Past Year
Central Illinois Avg Corn Price (\$/bu)	3.3350	-1.5%	-8.0%
Central Illinois Avg Soybean Price (\$/bu)	8.0750	-2.9%	-20.0%
Central Illinois 48% Soybean Meal, Rail (\$/ton)	297.40	-1.4%	-26.1%
Hard Red Winter Wheat Truck to Kansas City (\$/bu)	4.1225	-4.7%	-19.4%
Dark Northern Spring Wheat, 14%, MN, Rail (\$/bu)	6.0125	-5.8%	-20.4%
Soft White Wheat Portland (\$/bu)	5.8500	-0.4%	0.0%
Sorghum, Kansas City, Truck (\$/cwt)	5.6950	-2.4%	-6.5%

### Broilers

Nat'l Delivered Whole Body Price (cents/lb)	100.34	3.3%	-8.0%
Est. Young Chicken Slaughter - Current Week (000's)	162,049	-1.9%	N/A
Actual Slaughter of Young Chickens (000's)	158,639	-3.5%	-1.9%
YTD Actual Slaughter of Young Chickens (000's)	2,572,318	N/A	1.4%
Actual RTC Pounds of Young Chickens (000's)	739,067	-4.1%	-2.7%
YTD RTC Pounds of Young Chickens (000's)	11,981,350	N/A	0.6%

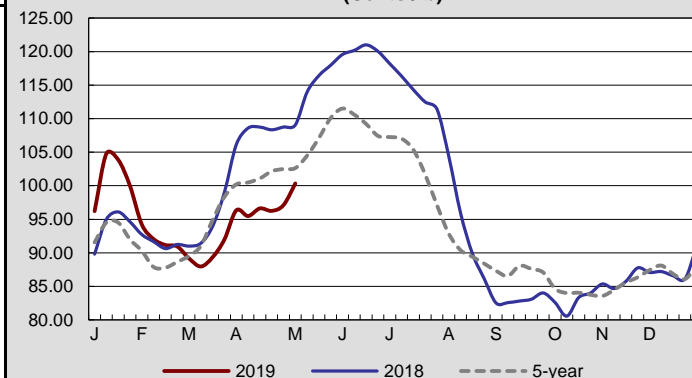
### Turkeys

Nat'l FOB Frozen Whole Body Price (cents/lb)	83.50	-1.8%	6.4%
Actual Slaughter of Turkeys (000's)	3,542	-9.6%	-12.5%
YTD Actual Slaughter of Turkeys (000's)	62,749	N/A	-2.8%
Actual RTC Pounds of Turkeys (000's)	93,625	-10.5%	-9.8%
YTD RTC Pounds of Turkeys (000's)	1,683,530	N/A	1.5%

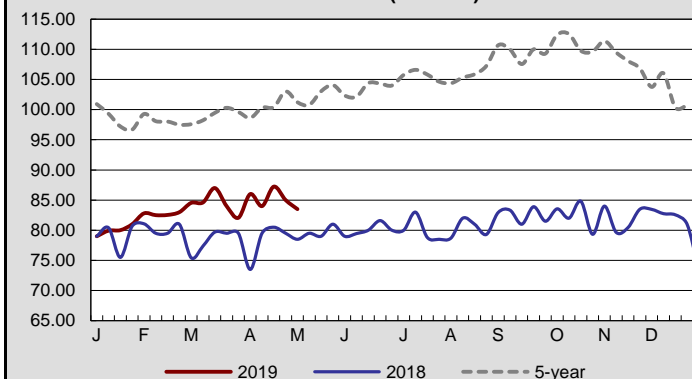
### Eggs

Combined Regional Large Eggs (cents/dozen)	64.53	-8.1%	-52.4%
National Shell Egg Inventory (30 doz. Cases/000,s)	1,479.90	3.6%	N/A
Shell Egg Demand Indicator (SEDI)	1.30	-1.22	11.80
Central States Breaking Stock Av. Price (cents/dozen)	32.50	-7.1%	-61.3%
National Breaking Stock Inventory (30 doz. Cases/000's)	343.8	1.8%	N/A
Eggs Broken Under Federal Inspection (30 doz cases)	1,547,238	0.1%	0.5%
YTD Eggs Broken Under Federal Inspection (30 doz cases)	24,798,506	N/A	6.5%

Weekly National Broiler Whole Body Delivered Price  
(Cents /lb)



Weekly National Frozen Whole Body Hen Turkey FOB  
Price (cents/lb)



Weekly Combined Regional Large Egg Price  
(Cents/Dozen)

