

Hogs and Pork

	Current Week	Change From Past Week	Change From Past Year
Nat'l Purchased Carc Wtd Avg Price - Barrows & Gilts (\$/cwt)	67.22	-0.4%	-11.4%
Pork Carcass Cutout FOB Plant (\$/cwt)	72.21	-0.8%	-14.1%
Segregated Early Weaned (SEW) Feeder Pigs (\$/head)	32.32	1.3%	111.0%
Iowa/So. Minn Avg Weight Barrows & Gilts (lbs)	280.2	-0.8%	0.6%
Est. Hog Slaughter	2,415,000	16.6%	6.0%
YTD Est. Hog Slaughter	66,955,000	N/A	3.3%
Est. Pork Production (mil lbs)	513.7	16.2%	8.8%
YTD Est. Pork Production (mil lbs)	14,343.1	N/A	4.0%

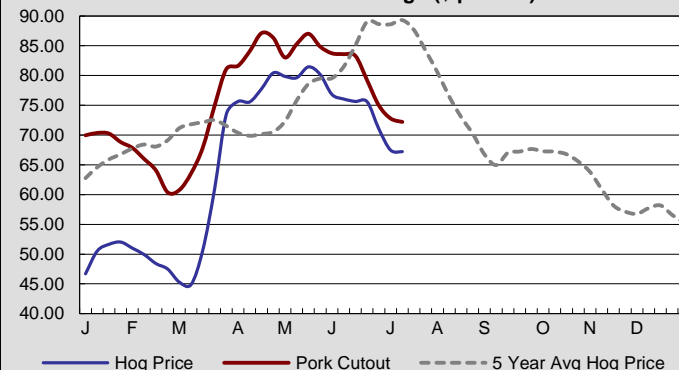
Cattle and Beef

Live Wtd Avg Steer Price, 5 Area FOB (\$/cwt)	113.37	1.9%	2.6%
Dressed Wtd Avg Steer Price, 5 Area Del (\$/cwt)	182.87	1.5%	5.1%
Boxed Beef Cutout, Choice (\$/cwt)	214.64	-2.1%	4.0%
Boxed Beef Cutout, Select (\$/cwt)	191.56	-2.0%	-3.0%
Boxed Beef, Choice/Select Spread (\$/cwt)	23.08	-0.75	14.11
By-Product Drop Value, Steer (\$/cwt live)	8.53	0.6%	-9.7%
CME Feeder Cattle Index (\$/cwt)	141.08	N/A	-2.8%
Texas Avg Live Weight Slaughter Cattle (lbs)	1,306.0	1.2%	0.4%
Texas Percent Slaughter Heifers	37%	-14.0%	-11.9%
Est. Cattle Slaughter	655,000	14.3%	0.8%
YTD Est. Cattle Slaughter	17,494,000	N/A	1.2%
Est. Beef Production (mil lbs)	521.4	14.7%	-0.5%
YTD Est. Beef Production (mil lbs)	14,030.2	N/A	0.1%

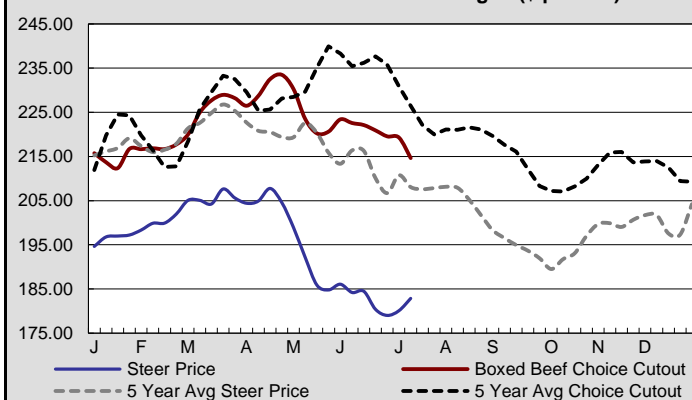
Lamb and Veal

Slaughter Lamb, Comprehensive, Carc. Wtd Avg Price (\$/cwt)	308.46	0.0%	3.6%
Lamb Carcass Cutout (\$/cwt)	347.92	1.4%	2.7%
Est. Sheep Slaughter	39,000	44.4%	5.4%
YTD Est. Sheep Slaughter	1,086,000	N/A	2.4%
Est. Lamb Production (mil lbs)	2.6	44.4%	4.0%
YTD Est. Lamb Production (mil lbs)	73.7	N/A	-2.9%
Veal Carcass Wtd Avg Non-Packer Owned (\$/cwt)	308.59	-0.3%	0.5%
Veal Carcass Wtd Avg Packer Owned (\$/cwt)	306.27	-0.1%	0.9%

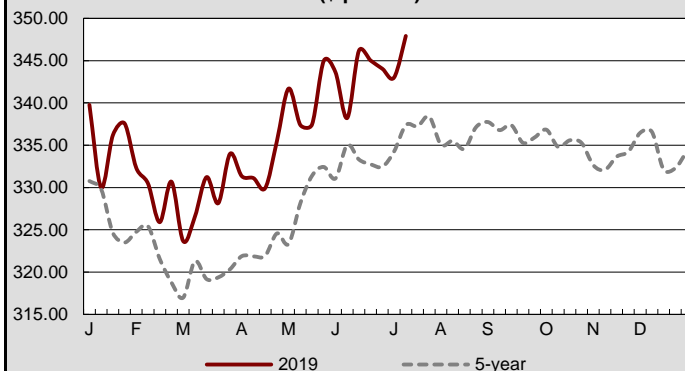
Weekly Barrow & Gilt Price and Weekly Pork Cutout vs. 5 Year Average (\$ per cwt)



Weekly Dressed Steer Price and Weekly Boxed Beef Choice Cutout vs. 5 Year Averages (\$ per cwt)



Weekly Lamb Carcass Cutout vs 5 Year Average (\$ per cwt)





Weekly Livestock, Poultry & Grain Market Highlights

July 15, 2019

Grain

	Current Week	Change From Past Week	Change From Past Year
Central Illinois Avg Corn Price (\$/bu)	4.5750	4.7%	47.6%
Central Illinois Avg Soybean Price (\$/bu)	8.8900	5.5%	13.4%
Central Illinois 48% Soybean Meal, Rail (\$/ton)	317.80	2.9%	-5.7%
Hard Red Winter Wheat Truck to Kansas City (\$/bu)	4.7225	4.9%	-9.5%
Dark Northern Spring Wheat, 14%, MN, Rail (\$/bu)	6.3275	1.6%	-5.8%
Soft White Wheat Portland (\$/bu)	5.9500	0.2%	-0.3%
Sorghum, Kansas City, Truck (\$/cwt)	7.1800	4.1%	30.5%

Broilers

Nat'l Delivered Whole Body Price (cents/lb)	92.81	-1.0%	-17.5%
Est. Young Chicken Slaughter - Current Week (000's)	171,523	8.2%	N/A
Actual Slaughter of Young Chickens (000's)	152,427	-13.5%	5.5%
YTD Actual Slaughter of Young Chickens (000's)	4,382,524	N/A	1.8%
Actual RTC Pounds of Young Chickens (000's)	718,236	-13.5%	9.1%
YTD RTC Pounds of Young Chickens (000's)	20,511,074	N/A	1.6%

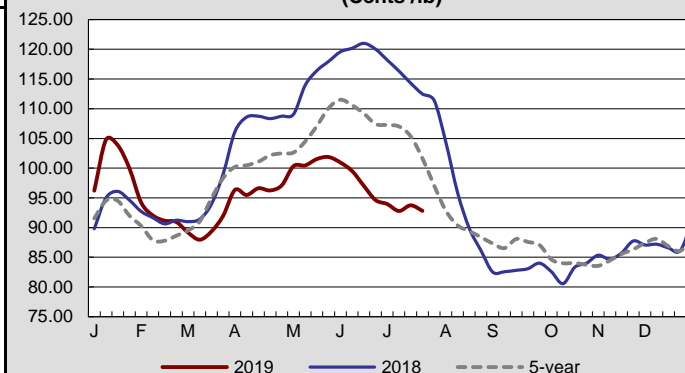
Turkeys

Nat'l FOB Frozen Whole Body Price (cents/lb)	87.60	0.7%	11.2%
Actual Slaughter of Turkeys (000's)	2,943	-33.2%	-20.7%
YTD Actual Slaughter of Turkeys (000's)	106,661	N/A	-3.1%
Actual RTC Pounds of Turkeys (000's)	77,811	-32.5%	-14.5%
YTD RTC Pounds of Turkeys (000's)	2,831,319	N/A	1.1%

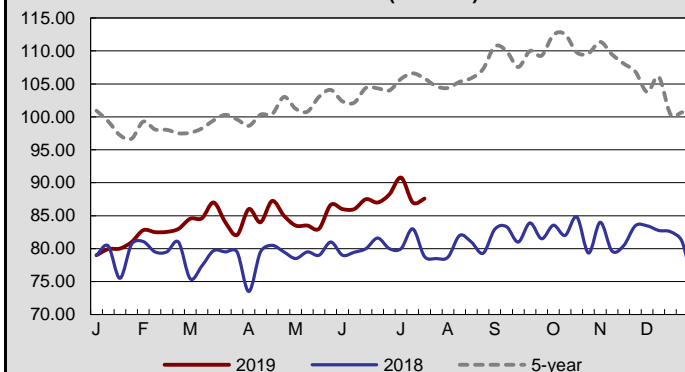
Eggs

Combined Regional Large Eggs (cents/dozen)	63.19	-10.9%	-58.0%
National Shell Egg Inventory (30 doz. Cases/000,s)	1,504.70	5.6%	N/A
Shell Egg Demand Indicator (SEDI)	3.10	0.41	1.10
Central States Breaking Stock Av. Price (cents/dozen)	22.00	-4.3%	-62.4%
National Breaking Stock Inventory (30 doz. Cases/000's)	358.3	5.1%	N/A
Eggs Broken Under Federal Inspection (30 doz cases)	1,479,941	-8.0%	0.7%
YTD Eggs Broken Under Federal Inspection (30 doz cases)	42,389,138	N/A	4.5%

Weekly National Broiler Whole Body Delivered Price (Cents /lb)



Weekly National Frozen Whole Body Hen Turkey FOB Price (cents/lb)



Weekly Combined Regional Large Egg Price (Cents/Dozen)

