



Catfish Feed Deliveries

ISSN: 1944-9267

Released August 20, 2012, by the National Agricultural Statistics Service (NASS), Agricultural Statistics Board, United States Department of Agriculture (USDA).

July 2012 Catfish Feed Deliveries Down 14 Percent from Last Year

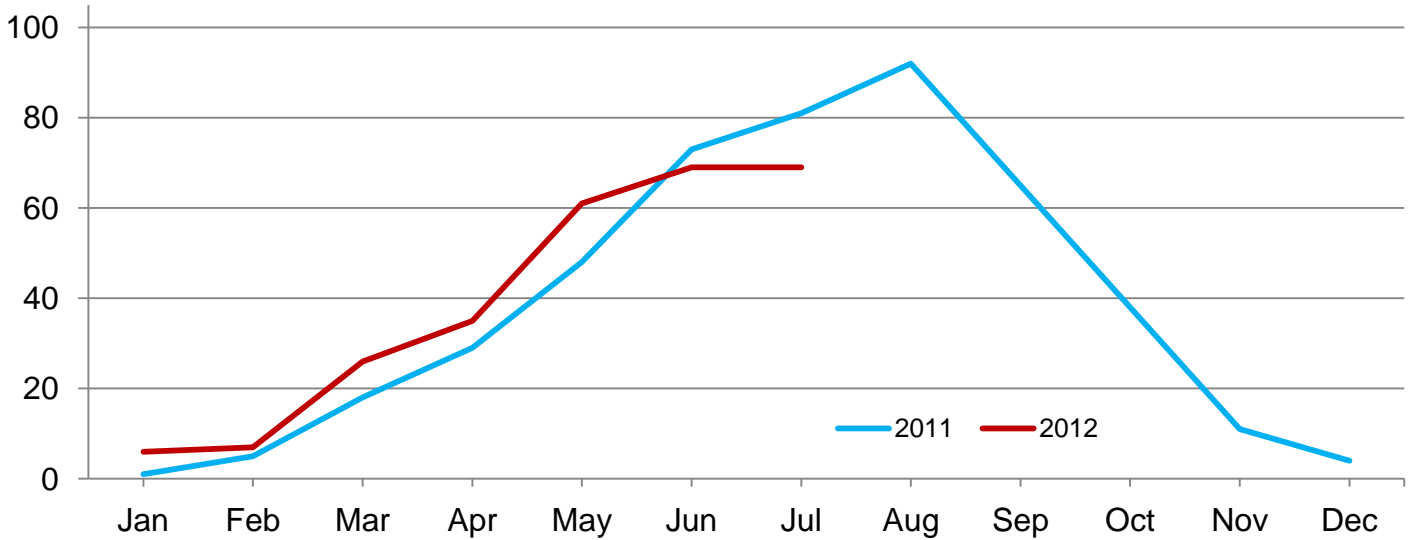
Total catfish feed delivered in the United States during July 2012 was 74,676 tons, down 14 percent from July 2011, but up 2 percent from the previous month. Foodsize catfish feed delivered totaled 68,983 tons, down 15 percent from the corresponding month a year ago. Feed delivered for fingerlings and broodfish totaled 5,693 tons, down 2 percent from the corresponding month a year ago.

July feed delivered to Mississippi catfish growers for foodsize fish totaled 34,891 tons, down 14 percent from last year. Mississippi accounted for 51 percent of the total foodsize catfish feed delivered to United States farmers.

The other major States with catfish feed deliveries for foodsize fish in July and their comparison to the previous year were Alabama with 23,155, down 16 percent; Arkansas with 4,981 tons, down 27 percent; and Louisiana with 318 tons, down 6 percent.

Foodsize Catfish Feed Delivered – United States

Thousand tons



Foodsize Catfish Feed Delivered – United States: 2011-2012

[Blank data cells indicate estimation period has not yet begun]

| Month | By month | | 2012 as percent of 2011 | Cumulative | | 2012 as percent of 2011 |
|-----------------|----------|--------|-------------------------|------------|---------|-------------------------|
| | 2011 | 2012 | | 2011 | 2012 | |
| | (tons) | (tons) | (percent) | (tons) | (tons) | (percent) |
| January | 1,045 | 5,658 | 541 | 1,045 | 5,658 | 541 |
| February | 4,631 | 7,298 | 158 | 5,676 | 12,956 | 228 |
| March | 17,797 | 25,500 | 143 | 23,473 | 38,456 | 164 |
| April | 29,131 | 35,452 | 122 | 52,604 | 73,908 | 140 |
| May | 47,896 | 60,871 | 127 | 100,500 | 134,779 | 134 |
| June | 73,483 | 69,170 | 94 | 173,983 | 203,949 | 117 |
| July | 80,905 | 68,983 | 85 | 254,888 | 272,932 | 107 |
| August | 92,282 | | | 347,170 | | |
| September | 65,023 | | | 412,193 | | |
| October | 37,703 | | | 449,896 | | |
| November | 11,407 | | | 461,303 | | |
| December | 3,930 | | | 465,233 | | |

Fingerlings and Broodfish Catfish Feed Delivered – United States: 2011-2012

[Blank data cells indicate estimation period has not yet begun. To avoid disclosure of individual operations, State sums may not equal the total]

| Month | By month | | 2012 as percent of 2011 | Cumulative | | 2012 as percent of 2011 |
|-----------------|----------|--------|-------------------------|------------|--------|-------------------------|
| | 2011 | 2012 | | 2011 | 2012 | |
| | (tons) | (tons) | (percent) | (tons) | (tons) | (percent) |
| January | 76 | 176 | 232 | 76 | 176 | 232 |
| February | 328 | 314 | 96 | 404 | 490 | 121 |
| March | 568 | 1,260 | 222 | 972 | 1,750 | 180 |
| April | 1,177 | 1,608 | 137 | 2,149 | 3,358 | 156 |
| May | 2,172 | 2,702 | 124 | 4,321 | 6,060 | 140 |
| June | 4,038 | 4,155 | 103 | 8,359 | 10,215 | 122 |
| July | 5,831 | 5,693 | 98 | 14,190 | 15,908 | 112 |
| August | 8,210 | | | 22,400 | | |
| September | 3,734 | | | 26,134 | | |
| October | 2,311 | | | 28,445 | | |
| November | 1,176 | | | 29,621 | | |
| December | 30 | | | 29,651 | | |

Foodsize Catfish Feed Delivered – Alabama: 2011-2012

[Blank data cells indicate estimation period has not yet begun]

| Month | By month | | 2012 as percent of 2011 | Cumulative | | 2012 as percent of 2011 |
|-----------------|----------|--------|-------------------------|------------|--------|-------------------------|
| | 2011 | 2012 | | 2011 | 2012 | |
| | (tons) | (tons) | (percent) | (tons) | (tons) | (percent) |
| January | 212 | 2,718 | 1,282 | 212 | 2,718 | 1,282 |
| February | 1,647 | 3,142 | 191 | 1,859 | 5,860 | 315 |
| March | 7,597 | 8,287 | 109 | 9,456 | 14,147 | 150 |
| April | 10,192 | 11,469 | 113 | 19,648 | 25,616 | 130 |
| May | 18,168 | 20,613 | 113 | 37,816 | 46,229 | 122 |
| June | 27,706 | 22,218 | 80 | 65,522 | 68,447 | 104 |
| July | 27,527 | 23,155 | 84 | 93,049 | 91,602 | 98 |
| August | 32,038 | | | 125,087 | | |
| September | 21,310 | | | 146,397 | | |
| October | 12,706 | | | 159,103 | | |
| November | 4,924 | | | 164,027 | | |
| December | 1,841 | | | 165,868 | | |

Foodsize Catfish Feed Delivered – Arkansas: 2011-2012

[Blank data cells indicate estimation period has not yet begun]

| Month | By month | | 2012 as percent of 2011 | Cumulative | | 2012 as percent of 2011 |
|-----------------|----------|--------|-------------------------|------------|--------|-------------------------|
| | 2011 | 2012 | | 2011 | 2012 | |
| | (tons) | (tons) | (percent) | (tons) | (tons) | (percent) |
| January | 52 | 269 | 517 | 52 | 269 | 517 |
| February | 462 | 485 | 105 | 514 | 754 | 147 |
| March | 1,431 | 2,471 | 173 | 1,945 | 3,225 | 166 |
| April | 2,548 | 3,155 | 124 | 4,493 | 6,380 | 142 |
| May | 3,924 | 5,417 | 138 | 8,417 | 11,797 | 140 |
| June | 5,970 | 5,741 | 96 | 14,387 | 17,538 | 122 |
| July | 6,792 | 4,981 | 73 | 21,179 | 22,519 | 106 |
| August | 7,042 | | | 28,221 | | |
| September | 5,766 | | | 33,987 | | |
| October | 3,097 | | | 37,084 | | |
| November | 603 | | | 37,687 | | |
| December | 129 | | | 37,816 | | |

Fingerlings and Broodfish Catfish Feed Delivered – Arkansas: 2011-2012

[Blank data cells indicate estimation period has not yet begun]

| Month | By month | | 2012 as percent of 2011 | Cumulative | | 2012 as percent of 2011 |
|-----------------|----------|--------|-------------------------|------------|--------|-------------------------|
| | 2011 | 2012 | | 2011 | 2012 | |
| | (tons) | (tons) | (percent) | (tons) | (tons) | (percent) |
| January | 10 | 4 | 40 | 10 | 4 | 40 |
| February | 96 | 50 | 52 | 106 | 54 | 51 |
| March | 133 | 298 | 224 | 239 | 352 | 147 |
| April | 131 | 197 | 150 | 370 | 549 | 148 |
| May | 403 | 239 | 59 | 773 | 788 | 102 |
| June | 658 | 351 | 53 | 1,431 | 1,139 | 80 |
| July | 676 | 595 | 88 | 2,107 | 1,734 | 82 |
| August | 1,361 | | | 3,468 | | |
| September | 912 | | | 4,380 | | |
| October | 605 | | | 4,985 | | |
| November | 125 | | | 5,110 | | |
| December | - | | | 5,110 | | |

- Represents zero.

Foodsize Catfish Feed Delivered – Louisiana: 2011-2012

[Blank data cells indicate estimation period has not yet begun]

| Month | By month | | 2012 as percent of 2011 | Cumulative | | 2012 as percent of 2011 |
|-----------------|----------|--------|-------------------------|------------|--------|-------------------------|
| | 2011 | 2012 | | 2011 | 2012 | |
| | (tons) | (tons) | (percent) | (tons) | (tons) | (percent) |
| January | 18 | 8 | 44 | 18 | 8 | 44 |
| February | 83 | 30 | 36 | 101 | 38 | 38 |
| March | 298 | 124 | 42 | 399 | 162 | 41 |
| April | 348 | 367 | 105 | 747 | 529 | 71 |
| May | 493 | 459 | 93 | 1,240 | 988 | 80 |
| June | 537 | 416 | 77 | 1,777 | 1,404 | 79 |
| July | 339 | 318 | 94 | 2,116 | 1,722 | 81 |
| August | 503 | | | 2,619 | | |
| September | 272 | | | 2,891 | | |
| October | 154 | | | 3,045 | | |
| November | 48 | | | 3,093 | | |
| December | 30 | | | 3,123 | | |

Foodsize Catfish Feed Delivered – Mississippi: 2011-2012

[Blank data cells indicate estimation period has not yet begun]

| Month | By month | | 2012 as percent of 2011 | Cumulative | | 2012 as percent of 2011 |
|-----------------|----------|--------|-------------------------|------------|---------|-------------------------|
| | 2011 | 2012 | | 2011 | 2012 | |
| | (tons) | (tons) | (percent) | (tons) | (tons) | (percent) |
| January | 209 | 1,706 | 816 | 209 | 1,706 | 816 |
| February | 1,456 | 2,246 | 154 | 1,665 | 3,952 | 237 |
| March | 5,746 | 11,317 | 197 | 7,411 | 15,269 | 206 |
| April | 12,757 | 16,571 | 130 | 20,168 | 31,840 | 158 |
| May | 21,465 | 29,818 | 139 | 41,633 | 61,658 | 148 |
| June | 33,344 | 35,308 | 106 | 74,977 | 96,966 | 129 |
| July | 40,684 | 34,891 | 86 | 115,661 | 131,857 | 114 |
| August | 46,342 | | | 162,003 | | |
| September | 32,582 | | | 194,585 | | |
| October | 16,991 | | | 211,576 | | |
| November | 3,155 | | | 214,731 | | |
| December | 758 | | | 215,489 | | |

Fingerlings and Broodfish Catfish Feed Delivered – Mississippi: 2011-2012

[Blank data cells indicate estimation period has not yet begun]

| Month | By month | | 2012 as percent of 2011 | Cumulative | | 2012 as percent of 2011 |
|-----------------|----------|--------|-------------------------|------------|--------|-------------------------|
| | 2011 | 2012 | | 2011 | 2012 | |
| | (tons) | (tons) | (percent) | (tons) | (tons) | (percent) |
| January | 47 | 149 | 317 | 47 | 149 | 317 |
| February | 204 | 155 | 76 | 251 | 304 | 121 |
| March | 365 | 740 | 203 | 616 | 1,044 | 169 |
| April | 1,000 | 1,251 | 125 | 1,616 | 2,295 | 142 |
| May | 1,657 | 2,277 | 137 | 3,273 | 4,572 | 140 |
| June | 3,277 | 3,693 | 113 | 6,550 | 8,265 | 126 |
| July | 5,036 | 4,992 | 99 | 11,586 | 13,257 | 114 |
| August | 6,642 | | | 18,228 | | |
| September | 2,526 | | | 20,754 | | |
| October | 1,590 | | | 22,344 | | |
| November | 1,029 | | | 23,373 | | |
| December | 13 | | | 23,386 | | |

Foodsize Catfish Feed Delivered – Other States East of the Mississippi River: 2011-2012

[Blank data cells indicate estimation period has not yet begun]

| Month | By month | | 2012 as percent of 2011 | Cumulative | | 2012 as percent of 2011 |
|-----------------|----------|--------|-------------------------|------------|--------|-------------------------|
| | 2011 | 2012 | | 2011 | 2012 | |
| | (tons) | (tons) | (percent) | (tons) | (tons) | (percent) |
| January | 88 | 89 | 101 | 88 | 89 | 101 |
| February | 304 | 320 | 105 | 392 | 409 | 104 |
| March | 1,362 | 1,001 | 73 | 1,754 | 1,410 | 80 |
| April | 1,505 | 1,275 | 85 | 3,259 | 2,685 | 82 |
| May | 1,338 | 1,525 | 114 | 4,597 | 4,210 | 92 |
| June | 1,914 | 1,678 | 88 | 6,511 | 5,888 | 90 |
| July | 1,914 | 2,138 | 112 | 8,425 | 8,026 | 95 |
| August | 2,113 | | | 10,538 | | |
| September | 1,667 | | | 12,205 | | |
| October | 1,932 | | | 14,137 | | |
| November | 728 | | | 14,865 | | |
| December | 181 | | | 15,046 | | |

Foodsize Catfish Feed Delivered – Other States West of the Mississippi River: 2011-2012

[Blank data cells indicate estimation period has not yet begun]

| Month | By month | | 2012 as percent of 2011 | Cumulative | | 2012 as percent of 2011 |
|-----------------|----------|--------|-------------------------|------------|--------|-------------------------|
| | 2011 | 2012 | | 2011 | 2012 | |
| | (tons) | (tons) | (percent) | (tons) | (tons) | (percent) |
| January | 466 | 868 | 186 | 466 | 868 | 186 |
| February | 679 | 1,075 | 158 | 1,145 | 1,943 | 170 |
| March | 1,363 | 2,300 | 169 | 2,508 | 4,243 | 169 |
| April | 1,781 | 2,615 | 147 | 4,289 | 6,858 | 160 |
| May | 2,508 | 3,039 | 121 | 6,797 | 9,897 | 146 |
| June | 4,012 | 3,809 | 95 | 10,809 | 13,706 | 127 |
| July | 3,649 | 3,500 | 96 | 14,458 | 17,206 | 119 |
| August | 4,244 | | | 18,702 | | |
| September | 3,426 | | | 22,128 | | |
| October | 2,823 | | | 24,951 | | |
| November | 1,949 | | | 26,900 | | |
| December | 991 | | | 27,891 | | |

Fingerlings and Broodfish Catfish Feed Delivered – Other States West of the Mississippi River: 2011-2012

[Blank data cells indicate estimation period has not yet begun]

| Month | By month | | 2012 as percent of 2011 | Cumulative | | 2012 as percent of 2011 |
|-----------------|----------|--------|-------------------------|------------|--------|-------------------------|
| | 2011 | 2012 | | 2011 | 2012 | |
| | (tons) | (tons) | (percent) | (tons) | (tons) | (percent) |
| January | - | 16 | (X) | - | 16 | (X) |
| February | - | 73 | (X) | - | 89 | (X) |
| March | 18 | 109 | 606 | 18 | 198 | 1,100 |
| April | 6 | 28 | 467 | 24 | 226 | 942 |
| May | 5 | 26 | 520 | 29 | 252 | 869 |
| June | 18 | 29 | 161 | 47 | 281 | 598 |
| July | 4 | 35 | 875 | 51 | 316 | 620 |
| August | 95 | | | 146 | | |
| September | 97 | | | 243 | | |
| October | 14 | | | 257 | | |
| November | 4 | | | 261 | | |
| December | 2 | | | 263 | | |

- Represents zero.

(X) Not applicable.

Statistical Methodology

Survey Procedures: All participating catfish feed mills are feed mills that produce and deliver catfish feed to bonafide catfish producers. Survey data for catfish feed are collected from feed mills by the USDA-NASS Mississippi Field Office, which is responsible for ensuring survey coverage is as complete as possible. Mills are contacted by mail, telephone, fax, or internet. Diligent effort is made to ensure that all operations are accounted for in the estimate.

Estimation Procedures: The *Catfish Feed Deliveries* report refers strictly to catfish feed *delivered* to bonafide catfish producers and excludes catfish feed delivered to producers of other species. The totals include both bagged and bulk feed. Prior to summarization, questionnaires are compared to previous reports for comparability. Estimates are made for feed mills whose reports are not available in time to be included in the release. Those mills are identified by an asterisk on page 6 of this release. Estimates are based on the mill's previous reports and current conditions. Published totals are a straight summation of the individual reports and estimated data.

If a mill uses a fiscal accounting system, proration is used to convert reported data to a calendar month basis.

Two unusual features of this report are worthy of note: (1) cooperating feed mills are listed by name, and (2) it is impossible for the public to infer the amount of catfish feed *produced* in each State. Since many mills *deliver* feed to more than one State and to growers of other species, any inferences about overall production per State or per mill are not valid.

Revision Policy: Revisions may be necessary in the following month's publication pending a review of late reports received from mills. Revisions to previous estimates are made to improve month-to-month relationships. Estimates for the previous month are subject to revision in all States and regions monthly totals. In February, all monthly estimates for the previous year are reviewed and subject to revisions. The review is primarily based on data that may have been received after the original estimates were published.

Reliability: Estimates are based on data from cooperating catfish feed mills, and therefore have no sampling variability. However, estimates may be subject to errors such as omissions, duplication, mistakes in reporting, recording, and processing of data. These errors are minimized through strict quality controls in the edit and summarization process and a careful review of all reported data for consistency and reasonableness.

Data were compiled in cooperation with the following feed mills:

| | |
|--------------------------------|--------------------------------|
| Alabama Catfish Feed Mill, LLC | Land O' Lakes Purina Feed, LLC |
| Carolina Fish Feeds | Rangen, Inc. |
| Delta Western | SouthFresh Feeds |
| Fishbelt Feeds, Inc. | Star Milling Co. |
| Flint River Mills, Inc. | Topwater Feed Mill |

Terms and Definitions Used for Catfish Feed Deliveries Estimates

Broodfish - Fish kept for egg production, including males. Broodfish produce the fertilized eggs that go to hatcheries. The most desirable size is 3 to 10 pounds or 4 to 6 years of age.

Catfish Feed - For the purposes of this report catfish feed is defined as feed *delivered* to bonafide catfish producers. Thus, it is not the absolute total amount of feed produced or even sold by a mill. (Some catfish feed is sold to producers of other species of fish.) The definition includes medicated feed. Catfish feed is designed to float on the surface of the water. Catfish are fed this way from the moment they hatch. Therefore, they learn to go to the surface for feed. The result is a clean nutritious diet for American farm raised catfish.

Catfish Feed for Foodsize Fish - Feed containing pellets larger than 1/8 of an inch.

Catfish Feed for Fingerlings/Broodfish - Feed containing pellets 1/8 of an inch or smaller.

Fingerlings – Fish weighing 2 to 60 pounds per 1,000 fish or 2 to 6 inches in length.

Foodsize Fish - Fish being grown commercially for human consumption. Optimum sizes at harvest depend on the market but are generally no lower than 3/4 pound but near one pound.

Information Contacts

Listed below are the commodity specialists in the Livestock Branch of the National Agricultural Statistics Service to contact for additional information. E-mail inquiries may be sent to nass@nass.usda.gov

| | |
|--|----------------|
| Dan Kerestes, Chief, Livestock Branch | (202) 720-3570 |
| Bruce Boess, Head, Poultry and Specialty Commodities Section | (202) 720-4447 |
| Cody Brokmeyer – Poultry Slaughter, Turkey Hatchery, Turkeys Raised | (202) 690-3237 |
| Charles Butler – Catfish Feed Deliveries | (601) 965-4575 |
| David Colwell – Cold Storage | (202) 720-8784 |
| LaKeya Jones – Catfish Processing, Catfish Production, Trout Production, Census of Aquaculture, Honey, Egg Products, Mink | (202) 720-0585 |
| Kim Linonis – Layers, Eggs | (202) 690-8632 |
| Miste Salmon – Broiler Hatchery, Chicken Hatchery | (202) 720-3244 |

Access to NASS Reports

For your convenience, you may access NASS reports and products the following ways:

- All reports are available electronically, at no cost, on the NASS web site: <http://www.nass.usda.gov>
- Both national and state specific reports are available via a free e-mail subscription. To set-up this free subscription, visit <http://www.nass.usda.gov> and in the “Receive NASS Updates” box under “Receive reports by Email,” click on “National” or “State” to select the reports you would like to receive.
- Printed reports may be purchased from the National Technical Information Service (NTIS) by calling toll-free (800) 999-6779, or (703) 605-6220 if calling from outside the United States or Canada. Accepted methods of payment are Visa, MasterCard, check, or money order.

For more information on NASS surveys and reports, call the NASS Agricultural Statistics Hotline at (800) 727-9540, 7:30 a.m. to 4:00 p.m. ET, or e-mail: nass@nass.usda.gov.

The United States Department of Agriculture (USDA) prohibits discrimination in all its programs and activities on the basis of race, color, national origin, age, disability, and where applicable, sex, marital status, familial status, parental status, religion, sexual orientation, political beliefs, genetic information, reprisal, or because all or a part of an individual's income is derived from any public assistance program. (Not all prohibited bases apply to all programs.) Persons with disabilities who require alternative means for communication of program information (Braille, large print, audiotape, etc.) should contact USDA's TARGET Center at (202) 720-2600 (voice and TDD).

To file a complaint of discrimination, write to USDA, Assistant Secretary for Civil Rights, Office of the Assistant Secretary for Civil Rights, 1400 Independence Avenue, S.W., Stop 9410, Washington, DC 20250-9410, or call toll-free at (866) 632-9992 (English) or (800) 877-8339 (TDD) or (866) 377-8642 (English Federal-relay) or (800) 845-6136 (Spanish Federal-relay). USDA is an equal opportunity provider and employer.