



# Catfish Feed Deliveries

ISSN: 1944-9267

Released November 20, 2012, by the National Agricultural Statistics Service (NASS), Agricultural Statistics Board, United States Department of Agriculture (USDA).

## October 2012 Catfish Feed Deliveries Down 7 Percent from Last Year

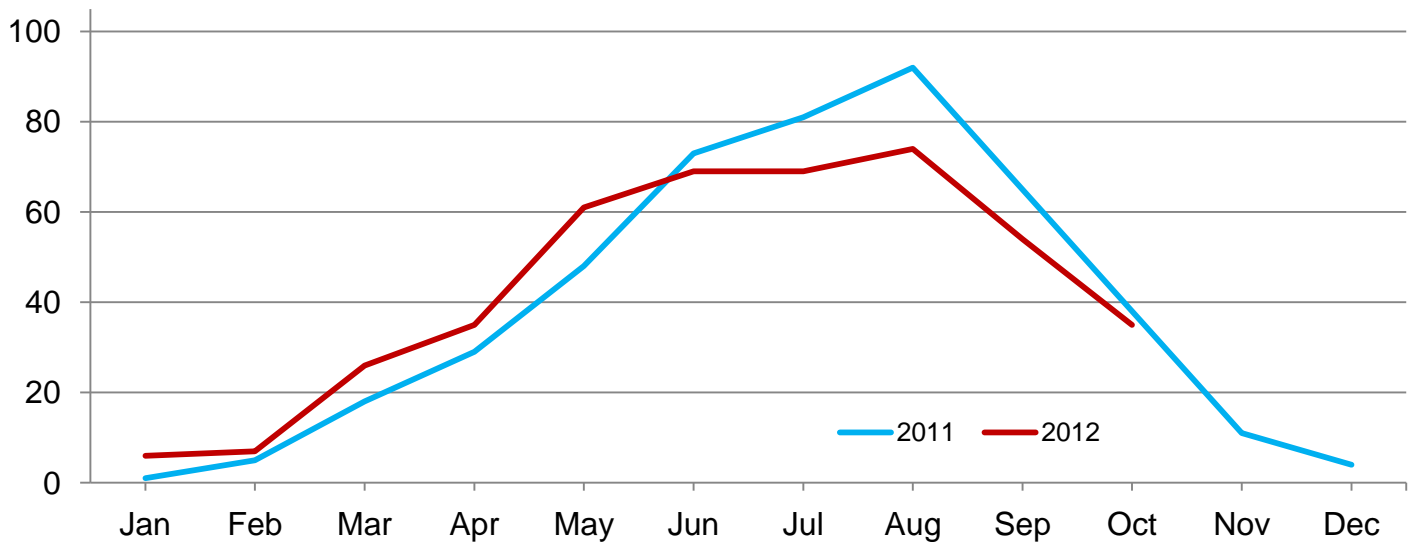
Total catfish feed delivered in the United States during October 2012 was 37,248 tons, down 7 percent from October 2011, and down 34 percent from the previous month. Foodsize catfish feed delivered totaled 35,393 tons, down 6 percent from the corresponding month a year ago. Feed delivered for fingerlings and broodfish totaled 1,855 tons, down 20 percent from the corresponding month a year ago.

October feed delivered to Mississippi catfish growers for foodsize fish totaled 16,918 tons, down slightly from last year. Mississippi accounted for 48 percent of the total foodsize catfish feed delivered to United States farmers.

The other major States with catfish feed deliveries for foodsize fish in October and their comparison to the previous year were Alabama with 11,372, down 10 percent; Arkansas with 2,710 tons, down 12 percent; and Louisiana with 145 tons, down 6 percent.

## Foodsize Catfish Feed Delivered – United States

Thousand tons



## Foodsize Catfish Feed Delivered – United States: 2011-2012

[Blank data cells indicate estimation period has not yet begun]

Month	By month		2012 as percent of 2011	Cumulative		2012 as percent of 2011
	2011	2012		2011	2012	
	(tons)	(tons)	(percent)	(tons)	(tons)	(percent)
January .....	1,045	5,658	541	1,045	5,658	541
February .....	4,631	7,298	158	5,676	12,956	228
March .....	17,797	25,500	143	23,473	38,456	164
April .....	29,131	35,452	122	52,604	73,908	140
May .....	47,896	60,871	127	100,500	134,779	134
June .....	73,483	69,170	94	173,983	203,949	117
July .....	80,905	68,983	85	254,888	272,932	107
August .....	92,282	73,592	80	347,170	346,524	100
September .....	65,023	53,594	82	412,193	400,118	97
October .....	37,703	35,393	94	449,896	435,511	97
November .....	11,407			461,303		
December .....	3,930			465,233		

## Fingerlings and Broodfish Catfish Feed Delivered – United States: 2011-2012

[Blank data cells indicate estimation period has not yet begun. To avoid disclosure of individual operations, State sums may not equal the total]

Month	By month		2012 as percent of 2011	Cumulative		2012 as percent of 2011
	2011	2012		2011	2012	
	(tons)	(tons)	(percent)	(tons)	(tons)	(percent)
January .....	76	176	232	76	176	232
February .....	328	314	96	404	490	121
March .....	568	1,260	222	972	1,750	180
April .....	1,177	1,608	137	2,149	3,358	156
May .....	2,172	2,702	124	4,321	6,060	140
June .....	4,038	4,155	103	8,359	10,215	122
July .....	5,831	5,693	98	14,190	15,908	112
August .....	8,210	4,735	58	22,400	20,643	92
September .....	3,734	2,990	80	26,134	23,633	90
October .....	2,311	1,855	80	28,445	25,488	90
November .....	1,176			29,621		
December .....	30			29,651		

## Foodsize Catfish Feed Delivered – Alabama: 2011-2012

[Blank data cells indicate estimation period has not yet begun]

Month	By month		2012 as percent of 2011	Cumulative		2012 as percent of 2011
	2011	2012		2011	2012	
	(tons)	(tons)	(percent)	(tons)	(tons)	(percent)
January .....	212	2,718	1,282	212	2,718	1,282
February .....	1,647	3,142	191	1,859	5,860	315
March .....	7,597	8,287	109	9,456	14,147	150
April .....	10,192	11,469	113	19,648	25,616	130
May .....	18,168	20,613	113	37,816	46,229	122
June .....	27,706	22,218	80	65,522	68,447	104
July .....	27,527	23,155	84	93,049	91,602	98
August .....	32,038	26,594	83	125,087	118,196	94
September .....	21,310	15,120	71	146,397	133,316	91
October .....	12,706	11,372	90	159,103	144,688	91
November .....	4,924			164,027		
December .....	1,841			165,868		

## Foodsize Catfish Feed Delivered – Arkansas: 2011-2012

[Blank data cells indicate estimation period has not yet begun]

Month	By month		2012 as percent of 2011	Cumulative		2012 as percent of 2011
	2011	2012		2011	2012	
	(tons)	(tons)	(percent)	(tons)	(tons)	(percent)
January .....	52	269	517	52	269	517
February .....	462	485	105	514	754	147
March .....	1,431	2,471	173	1,945	3,225	166
April .....	2,548	3,155	124	4,493	6,380	142
May .....	3,924	5,417	138	8,417	11,797	140
June .....	5,970	5,741	96	14,387	17,538	122
July .....	6,792	4,981	73	21,179	22,519	106
August .....	7,042	4,888	69	28,221	27,407	97
September .....	5,766	4,096	71	33,987	31,503	93
October .....	3,097	2,710	88	37,084	34,213	92
November .....	603			37,687		
December .....	129			37,816		

## Fingerlings and Broodfish Catfish Feed Delivered – Arkansas: 2011-2012

[Blank data cells indicate estimation period has not yet begun]

Month	By month		2012 as percent of 2011	Cumulative		2012 as percent of 2011
	2011	2012		2011	2012	
	(tons)	(tons)	(percent)	(tons)	(tons)	(percent)
January .....	10	4	40	10	4	40
February .....	96	50	52	106	54	51
March .....	133	298	224	239	352	147
April .....	131	197	150	370	549	148
May .....	403	239	59	773	788	102
June .....	658	351	53	1,431	1,139	80
July .....	676	595	88	2,107	1,734	82
August .....	1,361	758	56	3,468	2,492	72
September .....	912	731	80	4,380	3,223	74
October .....	605	603	100	4,985	3,826	77
November .....	125			5,110		
December .....	-			5,110		

- Represents zero.

## Foodsize Catfish Feed Delivered – Louisiana: 2011-2012

[Blank data cells indicate estimation period has not yet begun]

Month	By month		2012 as percent of 2011	Cumulative		2012 as percent of 2011
	2011	2012		2011	2012	
	(tons)	(tons)	(percent)	(tons)	(tons)	(percent)
January .....	18	8	44	18	8	44
February .....	83	30	36	101	38	38
March .....	298	124	42	399	162	41
April .....	348	367	105	747	529	71
May .....	493	459	93	1,240	988	80
June .....	537	416	77	1,777	1,404	79
July .....	339	318	94	2,116	1,722	81
August .....	503	318	63	2,619	2,040	78
September .....	272	210	77	2,891	2,250	78
October .....	154	145	94	3,045	2,395	79
November .....	48			3,093		
December .....	30			3,123		

## Foodsize Catfish Feed Delivered – Mississippi: 2011-2012

[Blank data cells indicate estimation period has not yet begun]

Month	By month		2012 as percent of 2011	Cumulative		2012 as percent of 2011
	2011	2012		2011	2012	
	(tons)	(tons)	(percent)	(tons)	(tons)	(percent)
January .....	209	1,706	816	209	1,706	816
February .....	1,456	2,246	154	1,665	3,952	237
March .....	5,746	11,317	197	7,411	15,269	206
April .....	12,757	16,571	130	20,168	31,840	158
May .....	21,465	29,818	139	41,633	61,658	148
June .....	33,344	35,308	106	74,977	96,966	129
July .....	40,684	34,891	86	115,661	131,857	114
August .....	46,342	35,941	78	162,003	167,798	104
September .....	32,582	28,455	87	194,585	196,253	101
October .....	16,991	16,918	100	211,576	213,171	101
November .....	3,155			214,731		
December .....	758			215,489		

## Fingerlings and Broodfish Catfish Feed Delivered – Mississippi: 2011-2012

[Blank data cells indicate estimation period has not yet begun]

Month	By month		2012 as percent of 2011	Cumulative		2012 as percent of 2011
	2011	2012		2011	2012	
	(tons)	(tons)	(percent)	(tons)	(tons)	(percent)
January .....	47	149	317	47	149	317
February .....	204	155	76	251	304	121
March .....	365	740	203	616	1,044	169
April .....	1,000	1,251	125	1,616	2,295	142
May .....	1,657	2,277	137	3,273	4,572	140
June .....	3,277	3,693	113	6,550	8,265	126
July .....	5,036	4,992	99	11,586	13,257	114
August .....	6,642	3,814	57	18,228	17,071	94
September .....	2,526	2,053	81	20,754	19,124	92
October .....	1,590	1,049	66	22,344	20,173	90
November .....	1,029			23,373		
December .....	13			23,386		

## Foodsize Catfish Feed Delivered – Other States East of the Mississippi River: 2011-2012

[Blank data cells indicate estimation period has not yet begun]

Month	By month		2012 as percent of 2011	Cumulative		2012 as percent of 2011
	2011	2012		2011	2012	
	(tons)	(tons)	(percent)	(tons)	(tons)	(percent)
January .....	88	89	101	88	89	101
February .....	304	320	105	392	409	104
March .....	1,362	1,001	73	1,754	1,410	80
April .....	1,505	1,275	85	3,259	2,685	82
May .....	1,338	1,525	114	4,597	4,210	92
June .....	1,914	1,678	88	6,511	5,888	90
July .....	1,914	2,138	112	8,425	8,026	95
August .....	2,113	1,725	82	10,538	9,751	93
September .....	1,667	1,732	104	12,205	11,483	94
October .....	1,932	1,113	58	14,137	12,596	89
November .....	728			14,865		
December .....	181			15,046		

## Foodsize Catfish Feed Delivered – Other States West of the Mississippi River: 2011-2012

[Blank data cells indicate estimation period has not yet begun]

Month	By month		2012 as percent of 2011	Cumulative		2012 as percent of 2011
	2011	2012		2011	2012	
	(tons)	(tons)	(percent)	(tons)	(tons)	(percent)
January .....	466	868	186	466	868	186
February .....	679	1,075	158	1,145	1,943	170
March .....	1,363	2,300	169	2,508	4,243	169
April .....	1,781	2,615	147	4,289	6,858	160
May .....	2,508	3,039	121	6,797	9,897	146
June .....	4,012	3,809	95	10,809	13,706	127
July .....	3,649	3,500	96	14,458	17,206	119
August .....	4,244	4,126	97	18,702	21,332	114
September .....	3,426	3,981	116	22,128	25,313	114
October .....	2,823	3,135	111	24,951	28,448	114
November .....	1,949			26,900		
December .....	991			27,891		

## Fingerlings and Broodfish Catfish Feed Delivered – Other States West of the Mississippi River: 2011-2012

[Blank data cells indicate estimation period has not yet begun]

Month	By month		2012 as percent of 2011	Cumulative		2012 as percent of 2011
	2011	2012		2011	2012	
	(tons)	(tons)	(percent)	(tons)	(tons)	(percent)
January .....	-	16	(X)	-	16	(X)
February .....	-	73	(X)	-	89	(X)
March .....	18	109	606	18	198	1,100
April .....	6	28	467	24	226	942
May .....	5	26	520	29	252	869
June .....	18	29	161	47	281	598
July .....	4	35	875	51	316	620
August .....	95	55	58	146	371	254
September .....	97	70	72	243	441	181
October .....	14	129	921	257	570	222
November .....	4			261		
December .....	2			263		

- Represents zero.

(X) Not applicable.

## Statistical Methodology

**Survey Procedures:** All participating catfish feed mills are feed mills that produce and deliver catfish feed to bonafide catfish producers. Survey data for catfish feed are collected from feed mills by the USDA-NASS Mississippi Field Office, which is responsible for ensuring survey coverage is as complete as possible. Mills are contacted by mail, telephone, fax, or internet. Diligent effort is made to ensure that all operations are accounted for in the estimate.

**Estimation Procedures:** The *Catfish Feed Deliveries* report refers strictly to catfish feed **delivered** to bonafide catfish producers and excludes catfish feed delivered to producers of other species. The totals include both bagged and bulk feed. Prior to summarization, questionnaires are compared to previous reports for comparability. Estimates are made for feed mills whose reports are not available in time to be included in the release. Those mills are identified by an asterisk on page 6 of this release. Estimates are based on the mill's previous reports and current conditions. Published totals are a straight summation of the individual reports and estimated data.

If a mill uses a fiscal accounting system, proration is used to convert reported data to a calendar month basis.

Two unusual features of this report are worthy of note: (1) cooperating feed mills are listed by name, and (2) it is impossible for the public to infer the amount of catfish feed **produced** in each State. Since many mills **deliver** feed to more than one State and to growers of other species, any inferences about overall production per State or per mill are not valid.

**Revision Policy:** Revisions may be necessary in the following month's publication pending a review of late reports received from mills. Revisions to previous estimates are made to improve month-to-month relationships. Estimates for the previous month are subject to revision in all States and regions monthly totals. In February, all monthly estimates for the previous year are reviewed and subject to revisions. The review is primarily based on data that may have been received after the original estimates were published.

**Reliability:** Estimates are based on data from cooperating catfish feed mills, and therefore have no sampling variability. However, estimates may be subject to errors such as omissions, duplication, mistakes in reporting, recording, and processing of data. These errors are minimized through strict quality controls in the edit and summarization process and a careful review of all reported data for consistency and reasonableness.

### Data were compiled in cooperation with the following feed mills:

Alabama Catfish Feed Mill, LLC	Land O' Lakes Purina Feed, LLC
Carolina Fish Feeds	Rangen, Inc.
Delta Western	SouthFresh Feeds
Fishbelt Feeds, Inc.	Star Milling Co.
Flint River Mills, Inc.	Topwater Feed Mill

## Terms and Definitions Used for Catfish Feed Deliveries Estimates

**Broodfish** - Fish kept for egg production, including males. Broodfish produce the fertilized eggs that go to hatcheries. The most desirable size is 3 to 10 pounds or 4 to 6 years of age.

**Catfish Feed** - For the purposes of this report catfish feed is defined as feed *delivered* to bonafide catfish producers. Thus, it is not the absolute total amount of feed produced or even sold by a mill. (Some catfish feed is sold to producers of other species of fish.) The definition includes medicated feed. Catfish feed is designed to float on the surface of the water. Catfish are fed this way from the moment they hatch. Therefore, they learn to go to the surface for feed. The result is a clean nutritious diet for American farm raised catfish.

**Catfish Feed for Foodsize Fish** - Feed containing pellets larger than 1/8 of an inch.

**Catfish Feed for Fingerlings/Broodfish** - Feed containing pellets 1/8 of an inch or smaller.

**Fingerlings** – Fish weighing 2 to 60 pounds per 1,000 fish or 2 to 6 inches in length.

**Foodsize Fish** - Fish being grown commercially for human consumption. Optimum sizes at harvest depend on the market but are generally no lower than 3/4 pound but near one pound.

## Information Contacts

Listed below are the commodity specialists in the Livestock Branch of the National Agricultural Statistics Service to contact for additional information. E-mail inquiries may be sent to [nass@nass.usda.gov](mailto:nass@nass.usda.gov)

Dan Kerestes, Chief, Livestock Branch .....	(202) 720-3570
Bruce Boess, Head, Poultry and Specialty Commodities Section .....	(202) 720-4447
Cody Brokmeyer – Poultry Slaughter, Turkey Hatchery, Turkeys Raised .....	(202) 690-3237
Charles Butler – Catfish Feed Deliveries .....	(601) 965-4575
David Colwell – Cold Storage .....	(202) 720-8784
LaKeya Jones – Catfish Processing, Catfish Production, Trout Production, Census of Aquaculture, Honey, Egg Products, Mink .....	(202) 720-0585
Kim Linonis – Layers, Eggs .....	(202) 690-8632
Miste Salmon – Broiler Hatchery, Chicken Hatchery .....	(202) 720-3244

## Access to NASS Reports

For your convenience, you may access NASS reports and products the following ways:

- All reports are available electronically, at no cost, on the NASS web site: <http://www.nass.usda.gov>
- Both national and state specific reports are available via a free e-mail subscription. To set-up this free subscription, visit <http://www.nass.usda.gov> and in the “Receive NASS Updates” box under “Receive reports by Email,” click on “National” or “State” to select the reports you would like to receive.
- Printed reports may be purchased from the National Technical Information Service (NTIS) by calling toll-free (800) 999-6779, or (703) 605-6220 if calling from outside the United States or Canada. Accepted methods of payment are Visa, MasterCard, check, or money order.

For more information on NASS surveys and reports, call the NASS Agricultural Statistics Hotline at (800) 727-9540, 7:30 a.m. to 4:00 p.m. ET, or e-mail: [nass@nass.usda.gov](mailto:nass@nass.usda.gov).

The United States Department of Agriculture (USDA) prohibits discrimination in all its programs and activities on the basis of race, color, national origin, age, disability, and where applicable, sex, marital status, familial status, parental status, religion, sexual orientation, political beliefs, genetic information, reprisal, or because all or a part of an individual's income is derived from any public assistance program. (Not all prohibited bases apply to all programs.) Persons with disabilities who require alternative means for communication of program information (Braille, large print, audiotape, etc.) should contact USDA's TARGET Center at (202) 720-2600 (voice and TDD).

To file a complaint of discrimination, write to USDA, Assistant Secretary for Civil Rights, Office of the Assistant Secretary for Civil Rights, 1400 Independence Avenue, S.W., Stop 9410, Washington, DC 20250-9410, or call toll-free at (866) 632-9992 (English) or (800) 877-8339 (TDD) or (866) 377-8642 (English Federal-relay) or (800) 845-6136 (Spanish Federal-relay). USDA is an equal opportunity provider and employer.