



USDA Weekly National Lamb Market Summary

Livestock, Meat, Wool, Pelt, & International Markets

Friday, September 18, 2020

Volume 25, No. 38

Please use the links below to view access to the latest reports

National Boxed Lamb Cuts

https://www.ams.usda.gov/mnreports/ams_2648.pdf

National Weekly Slaughter Sheep Review

https://www.ams.usda.gov/mnreports/lm_lm352.txt
New Slug ID Number in MARS - 2613

USDA Estimated National Lamb Carcass Cutout

https://www.ams.usda.gov/mnreports/ams_2649.pdf

National Sheep Summary

https://www.ams.usda.gov/mnreports/sa_ls855.txt
New Slug ID in MARS - 3173

National Weekly Lamb Cuts - Imported

https://www.ams.usda.gov/mnreports/ams_2650.pdf

National Wool Review

https://www.ams.usda.gov/mnreports/gl_ls850.txt
New Slug ID in MARS - 2911

USDA Lamb Estimated Grading Percent

[Meat Grading Reports | Agricultural Marketing Service](#)

Select Tonnage report for current month and go to page 3

National Retail Summary

<https://www.ams.usda.gov/mnreports/lswlnvfeatures.pdf>
New Slug ID Number in MARS - 3229

Acutal Slaughter Under Federal Inspection

https://www.ams.usda.gov/mnreports/sj_ls711.txt

New Slug ID Number in MARS - 3206

U.S. Federally Inspected Slaughter by Region

https://www.ams.usda.gov/mnreports/sj_ls713.txt

New Slug ID Number in MARS - 3205

Estimated Meat Production

https://www.ams.usda.gov/mnreports/sj_ls712.txt

New Slug ID Number in MARS - 3209

U.S. to Mexico Weekly Export Summary

https://www.ams.usda.gov/mnreports/al_ls635.txt

New Slug ID Number in MARS - 2952

Weekly Lamb Pelts Price Report

https://www.ams.usda.gov/mnreports/nw_ls443.txt

New Slug ID in MARS - 3218

Feedlot Inventories

<https://www.ams.usda.gov/mnreports/lsmcolambfi.pdf>

New Slug ID in MARS - 2909

Weekly Auctions

SLAUGHTER LAMBS

[San Angelo, TX](#)
[Worthing, SD](#)
[Ft Collins, CO](#)

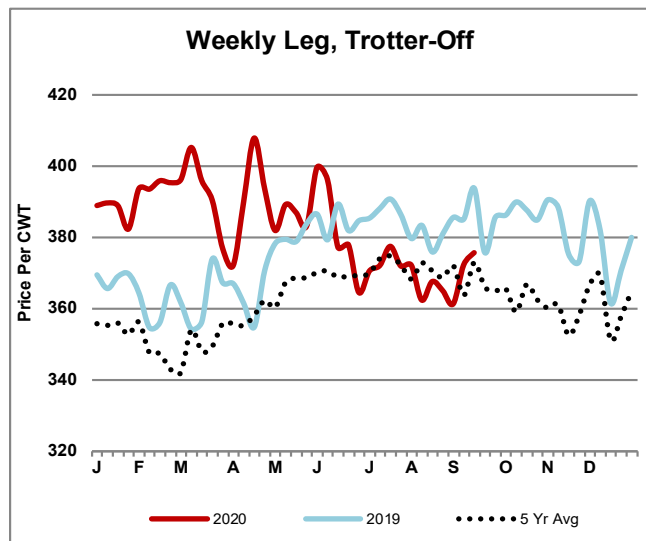
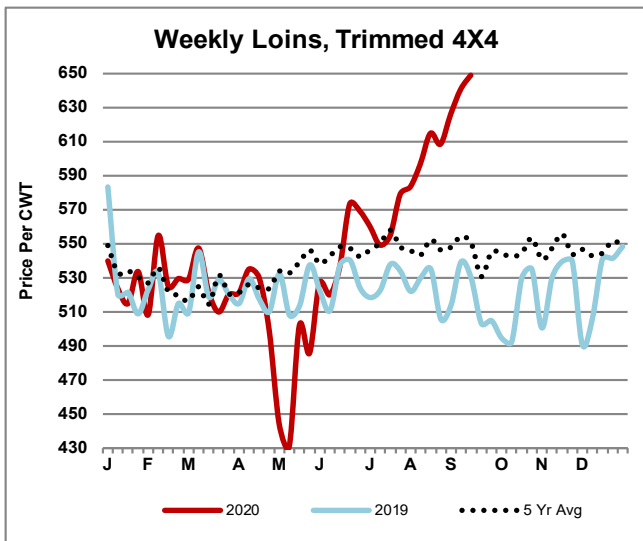
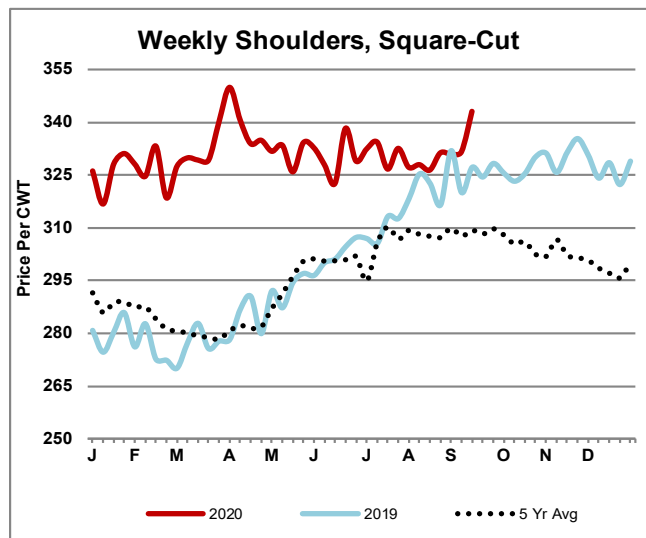
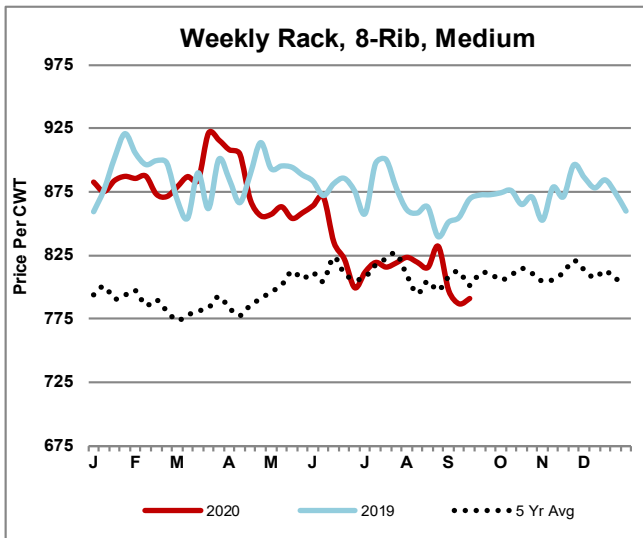
SLAUGHTER EWES

[San Angelo, TX](#)
[St. Onge-Newell, SD](#)
[Ft. Collins, CO](#)
[Billings, MT](#)

FEEDER LAMBS

[San Angelo, TX](#)
[St. Onge-Newell, SD](#)
[Ft. Collins, CO](#)

Weekly Lamb Graphs



For additional information, contact these Livestock, Poultry and Grain Market News locations

Des Moines, IA
William Worlie

St. Joseph, MO
Jodie Pitcock

Greeley, CO
970-353-9750

New Holland, PA
Levi Geyer

San Angelo, TX
Rebecca Sauder

Sioux Falls, SD
Justin Lumpkin