



# USDA Weekly National Lamb Market Summary

Livestock, Meat, Wool, Pelt, & International Markets

Friday, January 22, 2021

Volume 26, No. 03

Please use the links below to view access to the latest reports

## National Boxed Lamb Cuts

[https://www.ams.usda.gov/mnreports/ams\\_2648.pdf](https://www.ams.usda.gov/mnreports/ams_2648.pdf)

## National Weekly Slaughter Sheep Review

[https://www.ams.usda.gov/mnreports/lm\\_lm352.txt](https://www.ams.usda.gov/mnreports/lm_lm352.txt)  
New Slug ID Number in MARS - 2613

## USDA Estimated National Lamb Carcass Cutout

[https://www.ams.usda.gov/mnreports/ams\\_2649.pdf](https://www.ams.usda.gov/mnreports/ams_2649.pdf)

## National Sheep Summary

[https://www.ams.usda.gov/mnreports/sa\\_ls855.txt](https://www.ams.usda.gov/mnreports/sa_ls855.txt)  
New Slug ID in MARS - 3173

## National Weekly Lamb Cuts - Imported

[https://www.ams.usda.gov/mnreports/ams\\_2650.pdf](https://www.ams.usda.gov/mnreports/ams_2650.pdf)

## National Wool Review

[https://www.ams.usda.gov/mnreports/gl\\_ls850.txt](https://www.ams.usda.gov/mnreports/gl_ls850.txt)  
New Slug ID in MARS - 2911

## USDA Lamb Estimated Grading Percent

[Meat Grading Reports | Agricultural Marketing Service](#)

Select Tonnage report for current month and go to page 3

## National Retail Summary

<https://www.ams.usda.gov/mnreports/lswlnvfeatures.pdf>  
New Slug ID Number in MARS - 3229

## Acutal Slaughter Under Federal Inspection

[https://www.ams.usda.gov/mnreports/sj\\_ls711.txt](https://www.ams.usda.gov/mnreports/sj_ls711.txt)

New Slug ID Number in MARS - 3206

## U.S. Federally Inspected Slaughter by Region

[https://www.ams.usda.gov/mnreports/sj\\_ls713.txt](https://www.ams.usda.gov/mnreports/sj_ls713.txt)

New Slug ID Number in MARS - 3205

## Estimated Meat Production

[https://www.ams.usda.gov/mnreports/sj\\_ls712.txt](https://www.ams.usda.gov/mnreports/sj_ls712.txt)

New Slug ID Number in MARS - 3209

## U.S. to Mexico Weekly Export Summary

[https://www.ams.usda.gov/mnreports/al\\_ls635.txt](https://www.ams.usda.gov/mnreports/al_ls635.txt)

New Slug ID Number in MARS - 2952

## Weekly Lamb Pelts Price Report

[https://www.ams.usda.gov/mnreports/nw\\_ls443.txt](https://www.ams.usda.gov/mnreports/nw_ls443.txt)

New Slug ID in MARS - 3218

## Feedlot Inventories

<https://www.ams.usda.gov/mnreports/lsmcolambfi.pdf>

New Slug ID in MARS - 2909

## Weekly Auctions

### SLAUGHTER LAMBS

[San Angelo, TX](#)  
[Worthing, SD](#)  
[Ft Collins, CO](#)

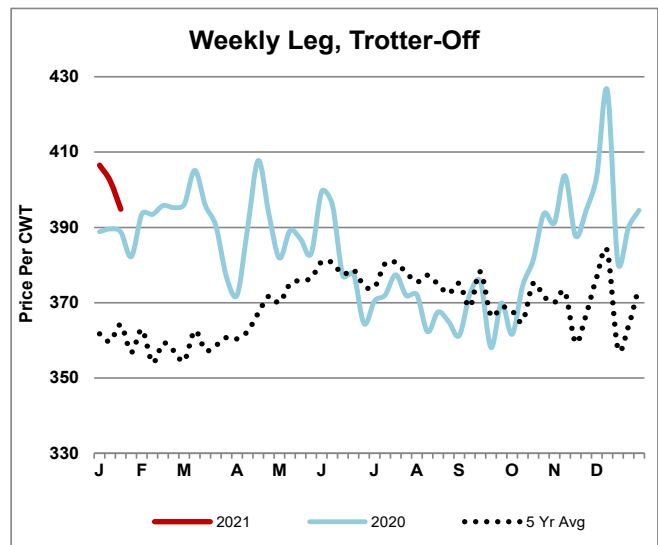
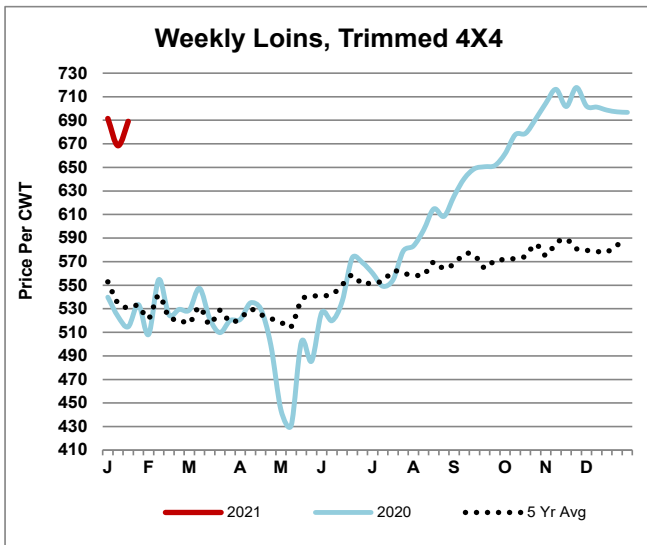
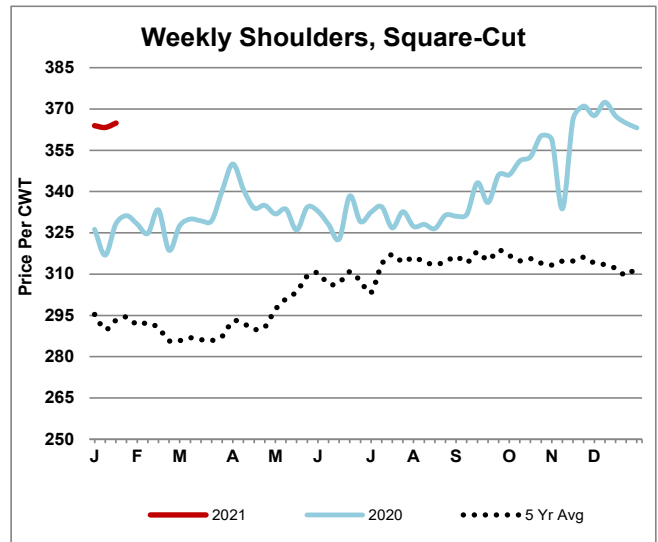
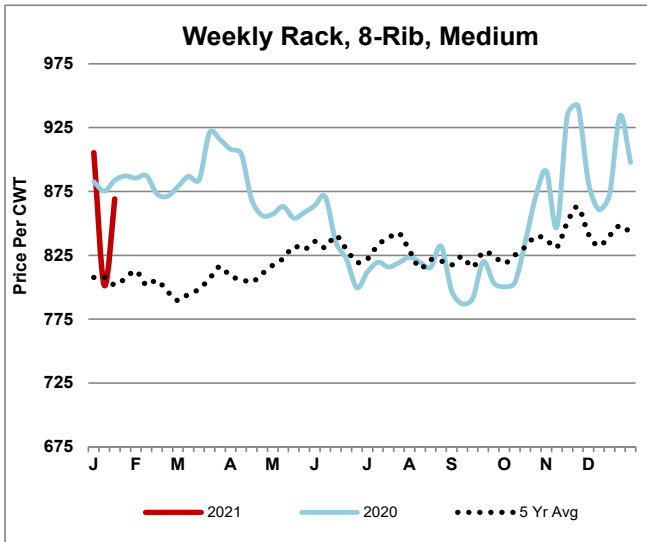
### SLAUGHTER EWES

[San Angelo, TX](#)  
[St. Onge-Newell, SD](#)  
[Ft. Collins, CO](#)  
[Billings, MT](#)

### FEEDER LAMBS

[San Angelo, TX](#)  
[St. Onge-Newell, SD](#)  
[Ft. Collins, CO](#)

## Weekly Lamb Graphs



For additional information, contact these Livestock, Poultry and Grain Market News locations

Des Moines, IA  
William Worlie

St. Joseph, MO  
Jodie Pitcock

Greeley, CO  
970-353-9750

New Holland, PA  
Levi Geyer

San Angelo, TX  
Rebecca Sauder

Sioux Falls, SD  
Justin Lumpkin