



USDA Weekly National Lamb Market Summary

Livestock, Meat, Wool, Pelt, & International Markets

Friday, October 02, 2020

Volume 25, No. 40

Please use the links below to view access to the latest reports

<u>National Boxed Lamb Cuts</u> https://www.ams.usda.gov/mnreports/ams_2648.pdf	<u>National Weekly Slaughter Sheep Review</u> https://www.ams.usda.gov/mnreports/lm_lm352.txt New Slug ID Number in MARS - 2613
<u>USDA Estimated National Lamb Carcass Cutout</u> https://www.ams.usda.gov/mnreports/ams_2649.pdf	<u>National Sheep Summary</u> https://www.ams.usda.gov/mnreports/sa_ls855.txt New Slug ID in MARS - 3173
<u>National Weekly Lamb Cuts - Imported</u> https://www.ams.usda.gov/mnreports/ams_2650.pdf	<u>National Wool Review</u> https://www.ams.usda.gov/mnreports/gl_ls850.txt New Slug ID in MARS - 2911
<u>USDA Lamb Estimated Grading Percent</u> Meat Grading Reports Agricultural Marketing Service Select Tonnage report for current month and go to page 3	<u>National Retail Summary</u> https://www.ams.usda.gov/mnreports/lswlnvfeatures.pdf New Slug ID Number in MARS - 3229
<u>Acutal Slaughter Under Federal Inspection</u> https://www.ams.usda.gov/mnreports/sj_ls711.txt New Slug ID Number in MARS - 3206	<u>U.S. Federally Inspected Slaughter by Region</u> https://www.ams.usda.gov/mnreports/sj_ls713.txt New Slug ID Number in MARS - 3205
<u>Estimated Meat Production</u> https://www.ams.usda.gov/mnreports/sj_ls712.txt New Slug ID Number in MARS - 3209	<u>U.S. to Mexico Weekly Export Summary</u> https://www.ams.usda.gov/mnreports/al_ls635.txt New Slug ID Number in MARS - 2952
<u>Weekly Lamb Pelts Price Report</u> https://www.ams.usda.gov/mnreports/nw_ls443.txt New Slug ID in MARS - 3218	<u>Feedlot Inventories</u> https://www.ams.usda.gov/mnreports/lsmcolambfi.pdf New Slug ID in MARS - 2909
<u>Weekly Auctions</u>	

SLAUGHTER LAMBS

- [San Angelo, TX](#)
- [Worthing, SD](#)
- [Ft Collins, CO](#)

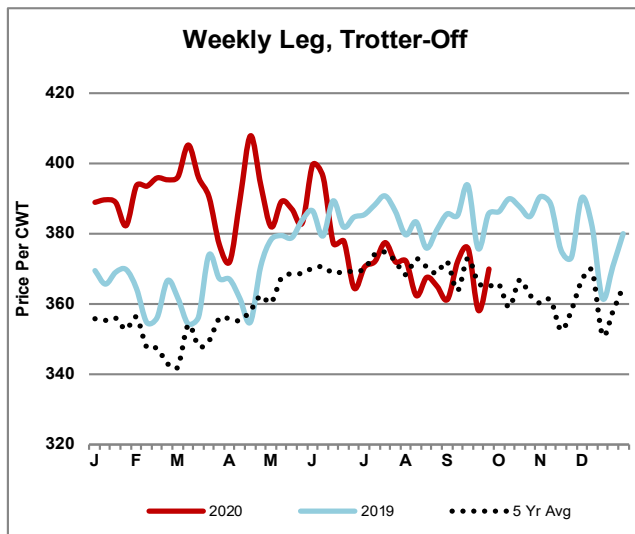
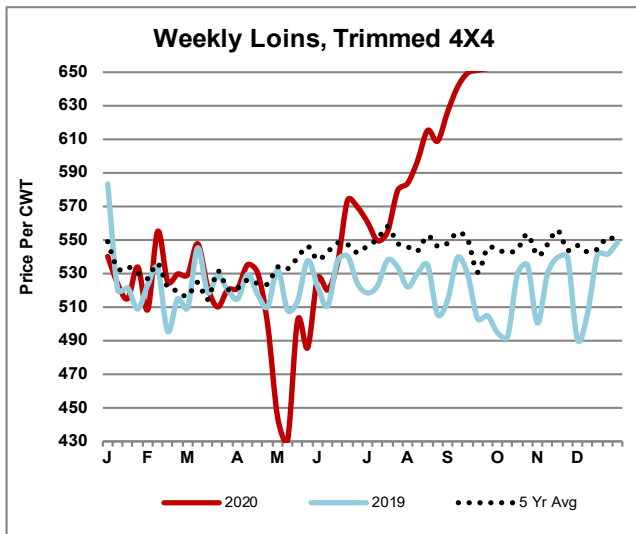
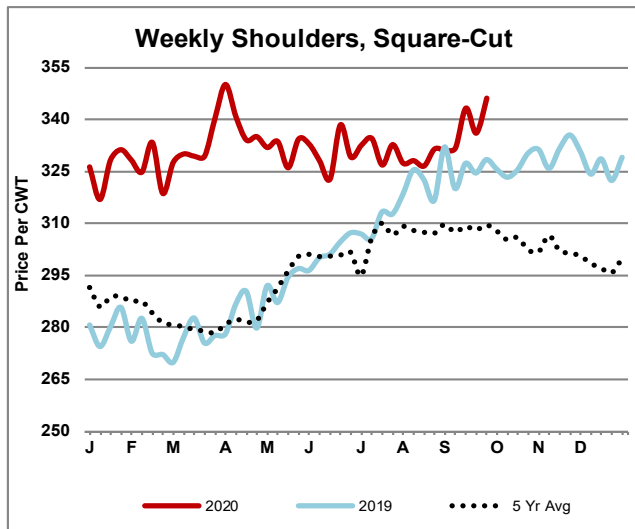
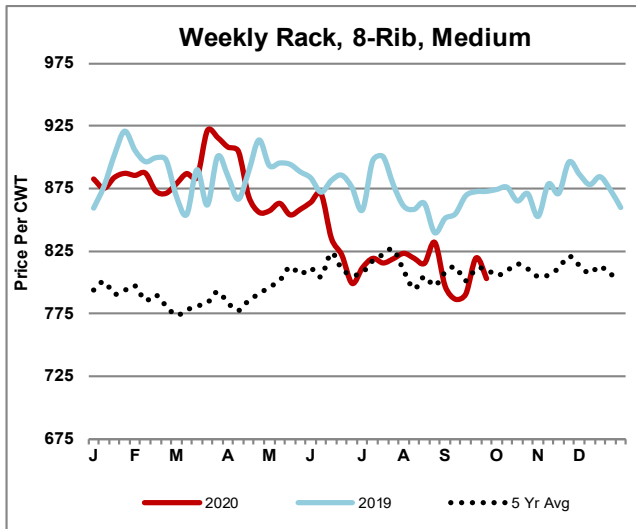
SLAUGHTER EWES

- [San Angelo, TX](#)
- [St. Onge-Newell, SD](#)
- [Ft. Collins, CO](#)
- [Billings, MT](#)

FEEDER LAMBS

- [San Angelo, TX](#)
- [St. Onge-Newell, SD](#)
- [Ft. Collins, CO](#)

Weekly Lamb Graphs



For additional information, contact these Livestock, Poultry and Grain Market News locations

Des Moines, IA
William Worlie

St. Joseph, MO
Jodie Pitcock

Greeley, CO
970-353-9750

New Holland, PA
Levi Geyer

San Angelo, TX
Rebecca Sauder

Sioux Falls, SD
Justin Lumpkin