



USDA Weekly National Lamb Market Summary

Livestock, Meat, Wool, Pelt, & International Markets

Friday, August 07, 2020

Volume 25, No. 32

National Boxed Lamb Cuts

FOB Plant basis negotiated sales for delivery within 0-21 day period, fresh and frozen carlot volume, including sales since last report, U.S. dollars per 100 pounds. *Items with no entries indicate non-reportable trades.*

***** Recent security patching of LMR servers on April 16, 2020 has caused technical problems with Text Report generation. LMR is still able to generate PDF, but Text Reports will in all likelihood not be able to be generated going forward. The PDF of this report can be found here:**

https://www.ams.usda.gov/mnreports/ams_2648.pdf

USDA Estimated National Lamb Carcass Cutout

National Sheep Summary

*** Recent security patching of LMR servers on April 16, 2020 has caused technical problems with Text Report generation. LMR is still able to generate PDF, but Text Reports will in all likelihood not be able to be generated going forward. The PDF of this report can be found here:

https://www.ams.usda.gov/mnreports/ams_2649.pdf

https://www.ams.usda.gov/mnreports/sa_ls855.txt

National Wool Review

http://www.ams.usda.gov/mnreports/gl_ls850.txt

National Weekly Lamb Carcass And Lamb Cuts - Imported

FOB cold storage; negotiated sales for delivery within 0-21 days and for delivery 22/Up days; fresh and frozen carlot volume;

U.S. dollars per 100 pounds. *Items with no entries indicate non-reportable trades.*

AUS = Australia NZ = New Zealand

Current Volume:	Fresh Cuts	1,798,574 pounds	Frozen Cuts	847,736 pounds	
Fresh Choice & Prime Cuts		# of	Total		Weighted
Sub-Primal		Trades	Pounds	Price Range	Average
AUS Rack, FR, Cap-off, 20-24 oz		15	80,548	659.00 1125.00	822.13
AUS Rack, FR, Cap-off, 20-24 oz - Frozen		10	5,840	744.00 1189.00	813.57
AUS Rack, FR, Cap-off, 24-28 oz		18	48,597	659.00 1135.00	805.83
AUS Rack, FR, Cap-off, 24-28 oz - Frozen		7	2,335	784.00 1189.00	931.64
AUS Rack, FR, Cap-off, 28 oz/up		21	8,301	945.00 1145.00	1064.15
AUS Rack, FR, Cap-off, 28 oz/up - Frozen		4	9,380	838.00 1029.00	869.51
AUS Shoulder, Square-cut		38	161,876	240.00 409.00	319.47
AUS Shoulder, Square-cut - Frozen		8	30,085	245.00 300.00	279.55
AUS Shoulder, Square-cut, bnls - Frozen					
AUS Foreshank, VP		14	10,828	284.00 370.00	337.67
AUS Foreshank, VP - Frozen					
AUS Shortloin, 1-Rib, 1x1		5	8,389	414.00 500.00	450.34
AUS Shortloin, 1-Rib, 0x0		67	384,069	400.00 543.00	491.46
AUS Leg, Long - Frozen		35	53,524	256.00 393.00	374.19
AUS Leg, semi bnls		5	5,800	328.00 460.00	444.38
AUS Hindshank, LP - Frozen		8	5,923	263.00 340.00	289.54
AUS Hindshank, VP - Frozen					
AUS Leg, bnls - Frozen		56	259,617	391.00 498.00	437.12
NZ Rack, FR, Cap-off, 12 oz/dn - Frozen					
NZ Rack, FR, Cap-off, 12-16 oz - Frozen		28	11,331	1040.00 1260.00	1127.95
NZ Rack, FR, Cap-off, 16-20 oz - Frozen		55	21,584	844.00 1250.00	1092.65
NZ Rack, FR, Cap-off, 20 oz/up - Frozen		12	9,677	739.00 1347.00	968.61

National Weekly Slaughter Sheep Review

Compared to last week: not reported due to confidentiality.

Negotiated Purchases: This week: *Confidential* Last week: *Confidential* Last year: Last Year: 2400

Domestic Slaughter Lambs: Choice and Prime: Weight Range Price Range Wtd Avg Price

Live Purchases: Woolled and Shorn *Not reported due to confidentiality*

Formula Purchases: Formula purchase information for Comprehensive Information: Includes all Negotiated and previously slaughtered lambs (carcass basis) Formula transactions submitted this week (carcass basis)

Weighted Average Weight: *Not reported due to confidentiality* Weighted Average Weight: *Not reported due to confidentiality*

Weighted Average Net Price: *Not reported due to confidentiality* Weighted Average Net Price: *Not reported due to confidentiality*

Weighted Average Dressing Percent: *Not reported due to confidentiality* Weighted Average Dressing Percent: *Not reported due to confidentiality*

For more information, please visit: www.ams.usda.gov/ConfidentialityGuidelines

USDA National Lamb Est. Grading Percent

5/31/2020 to 6/27/2020

Quality Grade	Yield Grade 1	Yield Grade 2	Yield Grade 3	Yield Grade 4	Yield Grade 5	Total Quality Graded	Percent of All Quality Graded
Prime	91	740	1,716	2,082	1,211	5,840	8.6%
Choice	3,103	19,168	24,720	10,424	4,313	61,728	91.4%
Good	0	0	0	0	0	0	0.0%
Utility	0	0	0	0	0	0	0.0%
Cull	0	0	0	0	0	0	0.0%
Total Yield Graded	3,194	19,908	26,436	12,506	5,524		
Percent of All Yield Graded	4.7%	29.5%	39.1%	18.5%	8.2%		

Acutal Slaughter Under Federal Inspection					U.S. Federally Inspected Slaughter by Region			
Red Meat Production					Week Ending 7/25/2020			
Estimated, except Actual=**	Production	Slaughter	Average Live Weights	Dressed	Standard Federal Regions	Total	Sheep in 1,000 head Mature Sheep	Lambs and Yearlings
8-Aug-20	2.0	31,000	131	66	1/	2/		
1-Aug-20	2.0	31,000	131	66	1	1.1	0.1	1.0
Change:					2	4.2	0.4	3.8
10-Aug-19	2.7	42,000	127	64	3	3.0	0.4	2.6
Change:	-25.90%	-26.20%			4	2.9	0.3	2.6
25-Jul-20	2.4	**	130	65	5	5.5	0.7	4.7
2020 YTD	76.7	1,146,000			6	1.0	0.1	0.9
2019 YTD	83.8	1,238,000			7	0.3	-	0.3
Change:	-8.40%	-7.40%			8	12.5	0.3	12.2
					9	5.7	0.2	5.5
					10	1.1	0.1	1.0
Actual Slaughter Under Federal Inspection					U.S. 2/ :	37.2	2.6	34.6
For Week Ending:	7/25/2020				- Represents zero.			
Monday	7,731	% Lambs and Yearlings		93.1	(D) Withheld to avoid disclosing individual operations			
Tuesday	7,568	% Mature Sheep		6.9	1/ States included in regions are: 1-CT, ME,NH,VT,MA & RI; 2-NY & NJ;			
Wednesday	6,824	3-DE-MD,PA,WV & VA; 4-AL,FL,GA,KY,MS,NC,SC & TN; 5-IL,IN,MI,						
Thursday	7,908	MN,OH & WI; 6-AR,LA,NM,OK & TX; 7-IA,KS-MO & NE; 8-CO,MT,ND,						
Friday	6,208	SD,UT & WY; 9-AZ,CA,HI & NV; 10-AK,ID,OR & WA						
Saturday	921	2/ Totals may not add due to rounding. A region may not be						
Total	37,160	published due to confidentiality, but is included in totals.						

U.S. to Mexico Weekly Export Summary						National Retail Summary					
Thursday 8/6/2020						THIS WEEK					
						LAST WEEK		LAST YEAR			
						Outlets	29,200	29,200	29,200		
						Feature Rate (1/)	7.0%	7.8%	9.6%		
						Special Rate (2/)	0.1%	0.0%	0.0%		
						Activity Index (3/)	2,900	2,050	3,260		
						Stores	Wtd Avg	Stores	Wtd Avg	Stores	Wtd Avg
						LAMB					
						LB Shoulder Roast	40 3.49	40 3.49			
						LB Shldr Blade Chops	680 5.91	300 6.52	250 5.35		
						LB Shldr Rnd Bone Chop	120 7.49		230 6.90		
						LB Breast	70 4.39				
						LB Rack	210 9.73	160 13.62	40 13.99		
						LB Ribs					
						LB Rib Chops					
						LB Whole Loin					
						LB Loin Chops	230 10.35	370 8.00	1,620 6.27		
						LB Bone-In Leg	40 3.99				
						LB Boneless Leg		210 7.98	90 8.99		
						LB Semi-Bnls Leg					
						LB Butterflied, Bnls Leg		210 7.99	10 8.00		
						LB Leg, Shank/Butt	10 4.99				
						LB Leg Steaks	100 7.99		100 7.99		
						LB Top Round Roast					
						LB Top Round Steak					
						LB Ground Lamb	290 7.43		70 7.99		
						LB Shank	120 6.49	40 3.99			
						LB Stew Meat-Lamb					
						LB Stew Meat-Mutton		60 4.99	40 3.99		

Weekly Lamb Pelts Price Report

FOB Major Production Points - Livestock Mandatory Reporting on Negotiated, Formula and Contract trades
Monday, August 3, 2020 through Friday, August 7, 2020
Per Piece Price. Estimated Credit Returned to Producers Per Piece Price for Week Ending: 8/7/2020

Pelt activity this week compared to last report: Not enough market participants to protect confidentiality.
Compared to last week, pelts were unable to be reported due to confidentiality.

Unshorn:	54.3%	Price Range	Shorn:	45.7%	Price Range
Supreme		*Prices not reported due to confidentiality*	Supreme		*Prices not reported due to confidentiality*
Premium		*Prices not reported due to confidentiality*	Premium		*Prices not reported due to confidentiality*
Standard		*Prices not reported due to confidentiality*	Standard		*Prices not reported due to confidentiality*
Fair		*Prices not reported due to confidentiality*	Fair		*Prices not reported due to confidentiality*
Mixed Class		*Prices not reported due to confidentiality*	Mixed Class		*Prices not reported due to confidentiality*
Damaged/Puller		*Prices not reported due to confidentiality*	Damaged/Puller		*Prices not reported due to confidentiality*

Pelt Category	Square Footage	Discolored Fiber	Manure/Seed Free	Staple Length	Micron	Processing Defects
Supreme	9-up	none	predominantly	1-3	22-26	minimal
Premium	7-10	none-minimal	predominantly	1-3	22-26	minimal
Standard	8-down	minimal	somewhat/heavy	1-3	22-up	minimal
Fair	4-up	some	somewhat/heavy	NA	NA	yes
Mixed Class	NA	some	somewhat/heavy	NA	NA	yes
Damaged/Puller	NA	some	somewhat/heavy	NA	NA	yes

Feedlot Inventories*

August 1, 2020
45,821

July 1, 2020
65,543

Change
-19,722

August 1, 2019
59,025

5 year Average
70,431

*Current as of the first day of each month. Inventory data is collected from feedlots with a capacity of 5,000 head or greater in Colorado.

Percentage Comparison

Previous Month
69.9%

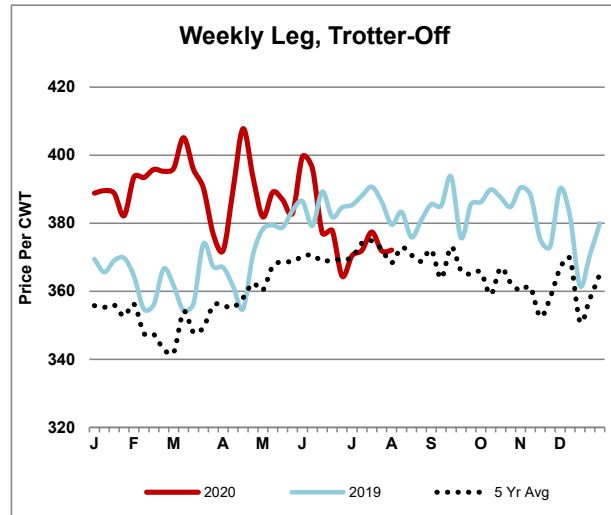
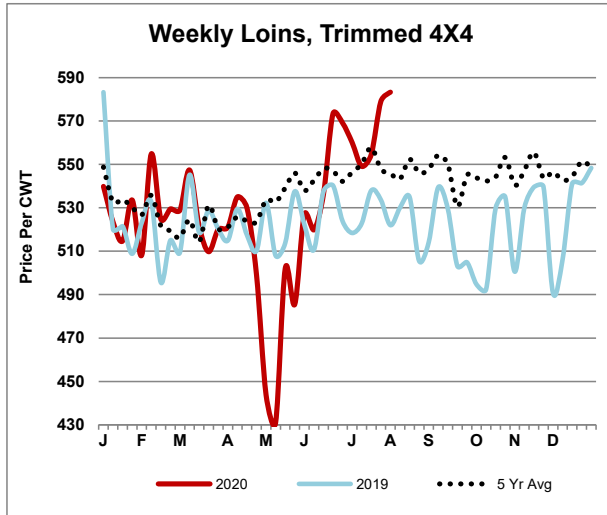
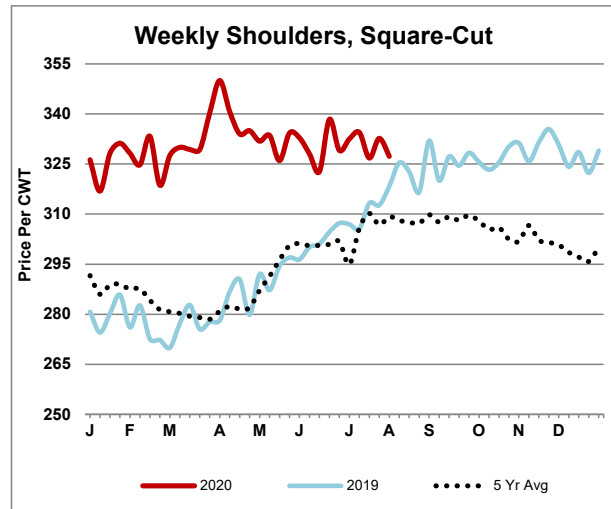
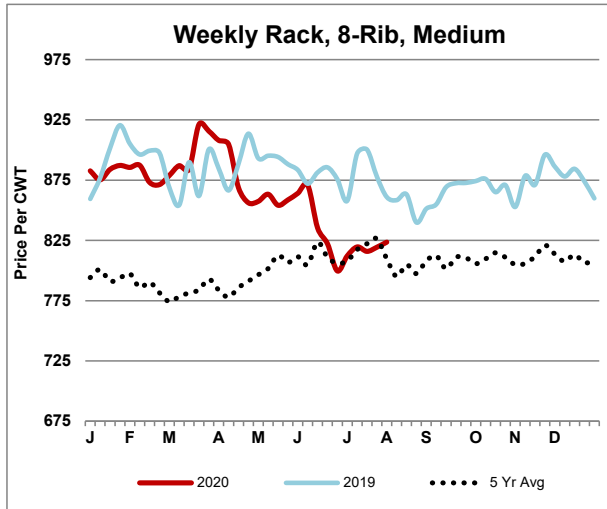
Previous Year
77.6%

5 Year
65.1%

Inventory Trends

MONTH	2015	2016	2017	2018	2019	2020	5 year Avg
Jan	177,610	192,045	192,425	214,715	187,094	157,635	192,778
Feb	160,615	162,025	153,670	180,585	152,898	127,621	161,959
Mar	169,935	138,715	128,665	163,324	120,793	117,201	144,286
Apr	165,720	154,210	117,810	161,957	124,616	134,618	144,863
May	132,635	125,920	95,080	147,994	98,568	107,158	120,039
Jun	97,065	93,285	88,200	134,844	86,652	81,433	100,009
Jul	63,950	61,685	75,875	107,311	74,301	65,543	76,624
Aug	69,370	50,055	81,135	92,569	59,025	45,821	70,431
Sep	102,915	96,215	117,225	133,423	83,389		106,633
Oct	252,355	230,055	254,830	232,850	203,786		234,775
Nov	274,805	246,750	278,145	256,134	222,258		255,618
Dec	245,870	219,810	245,557	234,877	192,313		227,685

Weekly Lamb Graphs



Weekly Auctions

SLAUGHTER LAMBS

[San Angelo, TX](#)

[Worthing, SD](#)

[Ft Collins, CO](#)

SLAUGHTER EWES

[San Angelo, TX](#)

[St. Onge-Newell, SD](#)

[Ft. Collins, CO](#)

[Billings, MT](#)

FEEDER LAMBS

[San Angelo, TX](#)

[St. Onge-Newell, SD](#)

[Ft. Collins, CO](#)

For additional information, contact these Livestock, Poultry and Grain Market News locations

Des Moines, IA
William Worlie
515-284-4460

St. Joseph, MO
Jodie Pitcock
816-676-7000

Greeley, CO
970-353-9750

New Holland, PA
Levi Geyer
717-354-2391

San Angelo, TX
Rebecca Sauder
915-653-1778

Sioux Falls, SD
Justin Lumpkin
605-338-4061

[USDA AMS Livestock, Poultry & Grain Market News Portal](#)