

Vegetables

Released July 10, 2009, by the National Agricultural Statistics Service (NASS), Agricultural Statistics Board, U.S. Department of Agriculture. For information on *Vegetables* call Debbie Flippin at (202) 720-2157, office hours 7:00 a.m. to 4:00 p.m. ET.

Fresh Vegetable Harvested Area Virtually Unchanged Onion Harvested Area Down 1 Percent Processed Vegetable Contracted Area Up 6 Percent

The prospective area for harvest of 11 selected fresh market vegetables during the summer quarter is forecast to be 265,100 acres, virtually unchanged from last year. Acreage increases in snap beans, carrots, sweet corn, cucumbers, and bell peppers more than offset acreage declines in broccoli, cabbage, cauliflower, celery, head lettuce, and tomatoes. Area forecast for melon harvest is 87,900 acres, virtually unchanged from last year. Cantaloup area is forecast at 28,900 acres, 2 percent above 2008. Honeydew area, at 10,200 acres, is down 5 percent from last year. Watermelon area, at 48,800 acres, is down 1 percent from a year ago.

Strawberry production in the U.S. is forecast at 26.2 million cwt, up 6 percent from last year. Area harvested, at 48,800 acres, is up 5 percent from 2008. Strawberry yield is forecast at 537 cwt per acre, up 3 cwt from 2008.

Onion growers expect to harvest 151,510 acres in 2009, down 1 percent from last year. Spring onion growers harvested 27,000 acres, down 5 percent from last season. Summer, non-storage onion growers expect to harvest 17,700 acres, down 9 percent from a year ago. Storage onion growers plan to harvest 106,810 acres in 2009, up 1 percent from last season.

Vegetable processors have contracted 1.23 million acres to be planted to the 5 major vegetable crops (snap beans, sweet corn, cucumbers for pickles, green peas, and tomatoes). This is up 6 percent from last year. Acreage increases for sweet corn, cucumbers for pickles, and tomatoes more than offset the decline in snap bean acreage. Contracted green pea acreage remains virtually unchanged. Green pea contracted production, at 400,920 tons, is down 3 percent from 2008. Contracted tomato production is forecast at 13.9 million tons, up 14 percent from 2008.

Contents

	Page
Fresh Market Vegetables and Melons	
Beans, Snap	5
Broccoli	5
Cabbage	5
Cantaloup	5
Carrots	5
Cauliflower	5
Celery	5
Corn, Sweet	5
Cucumbers	6
Honeydew Melons	6
Lettuce, Head	6
Onions, Spring	10
Summer Non-storage	10
Summer Storage	10
Monthly Prices Received	22
Peppers, Bell	6
Strawberries	9
Tomatoes	6
Watermelons	6
Processing Vegetables	
Beans, Snap	17
Corn, Sweet	18
Cucumbers for Pickles	18
Peas, Green	19
Tomatoes	20
Fresh Market Crop Comments	7
Processing Crop Comments	21
Processing Vegetables, by Utilization and Crop	15
Selected Fresh Market Vegetables and Melons, by Season and Crop	3

**Selected Fresh Market Vegetables and Melons: Area Harvested by Season,
and Crop, Major States, 2007-2008 and Forecasted Area 2009
(Domestic Units)**

Season and Crop	Area		
	Harvested		For Harvest 2009
	2007	2008	
	<i>Acres</i>	<i>Acres</i>	<i>Acres</i>
Winter	173,280	159,030	150,900
Spring	271,130	269,590	259,500
Summer			
Snap Beans	17,600	15,300	16,800
Broccoli ¹	31,000	30,000	29,500
Cabbage	14,100	12,600	11,800
Carrots	19,200	18,500	19,100
Cauliflower ¹	8,800	8,600	7,900
Celery ¹	6,100	6,200	6,000
Sweet Corn	98,900	98,600	101,000
Cucumbers	4,000	3,700	4,000
Head Lettuce	38,000	37,000	34,000
Bell Peppers ¹	3,100	3,100	3,300
Tomatoes	34,000	32,500	31,700
Total 11 Vegetables	274,800	266,100	265,100
Cantaloup	31,300	28,200	28,900
Honeydew	11,400	10,700	10,200
Watermelon	53,000	49,200	48,800
Total 3 Melons	95,700	88,100	87,900
Total Summer Crop	370,500	354,200	353,000

¹ Includes fresh market and processing.

**Selected Fresh Market Vegetables and Melons: Area Harvested by Season,
and Crop, Major States, 2007-2008 and Forecasted Area 2009
(Metric Units)**

Season and Crop	Area		
	Harvested		For Harvest 2009
	2007	2008	
	<i>Hectares</i>	<i>Hectares</i>	<i>Hectares</i>
Winter	70,120	64,360	61,070
Spring	109,720	109,100	105,020
Summer			
Snap Beans	7,120	6,190	6,800
Broccoli ¹	12,550	12,140	11,940
Cabbage	5,710	5,100	4,780
Carrots	7,770	7,490	7,730
Cauliflower ¹	3,560	3,480	3,200
Celery ¹	2,470	2,510	2,430
Sweet Corn	40,020	39,900	40,870
Cucumbers	1,620	1,500	1,620
Head Lettuce	15,380	14,970	13,760
Bell Peppers ¹	1,250	1,250	1,340
Tomatoes	13,760	13,150	12,830
Total 11 Vegetables ²	111,210	107,690	107,280
Cantaloup	12,670	11,410	11,700
Honeydew	4,610	4,330	4,130
Watermelon	21,450	19,910	19,750
Total 3 Melons ²	38,730	35,650	35,570
Total Summer Crop ²	149,940	143,340	142,860

¹ Includes fresh market and processing.

² Totals may not add due to rounding.

**Selected Fresh Market Vegetables and Melons: Area Harvested by Crop, State,
and Total, Summer Season, 2007-2008 and Forecasted Area 2009**

Crop and State	Usual Harvest Period	Area		
		Harvested		For Harvest 2009
		2007	2008	
		<i>Acres</i>	<i>Acres</i>	<i>Acres</i>
Snap Beans				
GA	Jul-Sep	3,500	3,700	3,800
MI	Jul-Oct	3,100	2,800	2,900
NY	Jun-Oct	7,800	6,600	6,800
VA	Jul-Sep	3,200	2,200	3,300
Total		17,600	15,300	16,800
Broccoli ¹				
CA	Jul-Sep	31,000	30,000	29,500
Cabbage				
GA	Jun-Sep	500	300	300
MI	Jun-Nov	2,400	2,400	2,500
NY	Jun-Dec	11,200	9,900	9,000
Total		14,100	12,600	11,800
Cantaloup				
CA	Jul-Sep	26,000	25,000	25,000
GA	Jun-Sep	1,500	1,000	1,700
SC	Jun-Sep	1,600	1,100	1,200
TX	Jul-Sep	2,200	1,100	1,000
Total		31,300	28,200	28,900
Carrots				
CA	Jul-Sep	17,000	16,200	16,900
MI	Jul-Nov	2,200	2,300	2,200
Total		19,200	18,500	19,100
Cauliflower ¹				
CA	Jul-Sep	8,800	8,600	7,900
Celery ¹				
CA	Jul-Sep	6,100	6,200	6,000
Sweet Corn				
CA	Jul-Sep	9,500	9,900	9,900
IL	Jul-Aug	6,600	6,800	6,800
MI	Jul-Oct	8,700	8,500	8,700
NJ	Jul-Oct	7,100	7,100	7,100
NY	Jul-Oct	22,500	22,900	23,400
NC	Jun-Aug	6,200	6,500	7,600
OH	Jul-Sep	16,000	15,200	16,400
PA	Jul-Oct	14,900	14,900	14,600
WI	Jul-Sep	7,400	6,800	6,500
Total		98,900	98,600	101,000

See footnote(s) at end of table.

--continued

**Selected Fresh Market Vegetables and Melons: Area Harvested by Crop, State,
and Total, Summer Season, 2007-2008 and Forecasted Area 2009 (continued)**

Crop and State	Usual Harvest Period	Area		
		Harvested		For Harvest 2009
		2007	2008	
		<i>Acres</i>	<i>Acres</i>	<i>Acres</i>
Cucumbers				
NJ	Jul-Oct	3,400	3,100	3,000
VA	Jul-Sep	600	600	1,000
Total		4,000	3,700	4,000
Honeydew				
AZ	May-Jul	2,100	1,900	1,800
CA	Jul-Sep	9,300	8,800	8,400
Total		11,400	10,700	10,200
Head Lettuce				
CA	Jul-Sep	38,000	37,000	34,000
Bell Peppers ¹				
NJ	Jul-Oct	3,100	3,100	3,300
Tomatoes				
CA	Jul-Sep	20,000	18,500	17,500
MI	Jul-Sep	2,200	2,100	2,100
NJ	Jul-Oct	2,900	2,900	2,900
NY	Jul-Oct	2,400	2,700	2,700
PA	Jul-Oct	2,000	1,600	1,700
VA	Jul-Sep	4,500	4,700	4,800
Total		34,000	32,500	31,700
Watermelon				
CA	Jul-Sep	9,000	9,000	9,000
GA	Jun-Sep	23,000	21,000	20,000
MS	Jun-Sep	2,600	2,600	2,600
SC	Jun-Sep	6,500	6,500	7,000
TX	Jul-Sep	11,900	10,100	10,200
Total		53,000	49,200	48,800

¹ Includes fresh market and processing.

Fresh Market Crop Comments

Snap Beans: Summer fresh market area for harvest is forecast at 16,800 acres, up 10 percent from last year. In New York, planting was slightly delayed due to sporadic rainfall throughout some areas of the State. In Michigan, cool and wet conditions hindered early planted snap beans. However, later plantings emerged in good condition. In Georgia, growing conditions have been favorable for the snap bean crop.

Broccoli: California's area for summer harvest is forecast at 29,500 acres, down 2 percent from last year. Coastal growing conditions in the State have been favorable. However, unusually low temperatures in late May slowed plant growth. By late June, quality of the broccoli crop was reported to be good.

Cabbage: Fresh market area for harvest is forecast at 11,800 acres, down 6 percent from 2008. New York cabbage harvest was delayed due to rainy conditions. However, the crop is progressing well. In Georgia, growing conditions have been favorable. In Michigan, cabbage fields appeared to be doing well as of mid-June.

Cantaloup: Summer cantaloup area for harvest is forecast at 28,900 acres, up 2 percent from 2008. In California, the summer melon crop is looking good. No major insect or disease problems have been reported. In Georgia, favorable conditions have been reported during the growing season.

Carrots: Area for fresh market harvest is forecast at 19,100 acres, up 3 percent from last year. In California, quality of the carrot crop is reported to be good. In Michigan, planting was complete by the first week of June. Growers in the east central region reported the crop is in good condition. However, early planted fields in the west central region were hampered by heavy rainfall toward the end of May. Replanted fields show slow emergence due to cool temperatures.

Cauliflower: California's area for summer harvest is forecast at 7,900 acres, down 8 percent from 2008. Unusually low temperatures in late May slowed plant growth.

Celery: California's summer area for harvest is forecast at 6,000 acres, down 3 percent from 2008. The summer celery crop is in good condition. Presence of seeders was minimal.

Sweet Corn: Fresh market area for harvest is forecast at 101,000 acres, up 2 percent from last year. In New York, timely rains promoted plant growth. In Pennsylvania, wet weather and cold temperatures delayed germination for some early planted sweet corn. In California, the sweet corn crop is developing well. Quality is reported to be good in all growing regions. In Michigan, sweet corn planting was complete by the first week of June. Cool May temperatures hindered early sweet corn development. However, warm temperatures in June promoted crop growth. In Illinois, cold and wet weather resulted in some growers replanting their sweet corn crop. New Jersey experienced unseasonably cold and wet conditions during the growing season. Despite these conditions, the sweet corn crop looks good. In North Carolina, weather conditions were favorable during the planting season. In Wisconsin, a cold and wet spring delayed planting and crop development.

Cucumbers: Area for summer harvest is forecast at 4,000 acres, up 8 percent from 2008. New Jersey's early crop is reported to be in good condition. Light harvest began around mid-June. In Virginia, spring weather conditions have been mild and favorable despite sporadic rainstorms in many areas of the Commonwealth.

Honeydew: Fresh market area for summer harvest is forecast at 10,200 acres, down 5 percent from last year. In California, no major insect or disease problems have been reported. Harvest in Arizona began in mid-May. The growing season is expected to end by early July.

Head Lettuce: California's area for summer harvest is forecast at 34,000 acres, down 8 percent from last year. Planted acreage is down due to water shortages in many growing areas of the State.

Bell Peppers: New Jersey's area for summer harvest is forecast at 3,300 acres, up 6 percent from 2008. Planting was one week behind schedule. Growing conditions have been favorable and higher than normal temperatures at the end of June were beneficial for the crop. Increased harvest volume is expected to begin by mid-July.

Tomatoes: Fresh market area for summer harvest is forecast at 31,700 acres, down 2 percent from last year. In California, water shortages are a major concern. Some fields received seedling transplants. Some early planted tomatoes were destroyed by hail in Fresno County around the beginning of June. Harvest began in many counties by mid-June. Michigan growers began transplanting throughout May. Early planted tomatoes progressed well by the end of May despite dry soil. Stakes were put in fields during the first week of June. Early plantings began to bloom and set fruit by mid-June. In New York, harvest is on schedule. In New Jersey, cold overnight temperatures and frequent rainfall during May into June stalled tomato growth. However, warm weather near the end of June benefitted plant development. Harvest is expected to begin around mid-July.

Watermelon: Summer area for harvest is forecast at 48,800 acres, down 1 percent from 2008. In Georgia, weather conditions have been favorable during the growing season. California's melon crop is off to a good start. In Texas, yields and quality of the melon crop are reported to be less than ideal due to heat stress during late spring.

**Strawberries: Area Harvested, Yield, and Production
by State and Total, 2007-2008 and Forecasted 2009 ¹**

Season and State	Area			Yield per Acre			Production		
	Harvested		For Harvest 2009	2007	2008	2009	2007	2008	2009
	2007	2008							
	<i>Acres</i>	<i>Acres</i>	<i>Acres</i>	<i>Cwt</i>	<i>Cwt</i>	<i>Cwt</i>	<i>1,000 Cwt</i>	<i>1,000 Cwt</i>	<i>1,000 Cwt</i>
CA	35,500	37,600	39,000	605	605	620	21,540	22,675	24,180
FL ²	6,600	6,900	8,300	320	260	220	2,112	1,794	1,826
OR	1,900	1,800	1,500	130	130	140	247	238	210
Major Sts Total	44,000	46,300	48,800	543	534	537	23,899	24,707	26,216

¹ Includes fresh market and processing.

² 2009 forecast carried forward from *Vegetables*, released April 3, 2009.

Strawberry Production Up 6 Percent from 2008

Strawberries: Strawberry production in the U.S. is forecast at 26.2 million cwt, up 6 percent from 2008. Area harvested, at 48,800 acres, is up 5 percent from last year. California's forecasted acreage is up 4 percent from 2008. The strawberry crop rebounded from a slow start due to unusually high temperatures during mid-April. Quality of the berry crop is reported to be excellent as a result of ideal growing conditions throughout most of the season. In Oregon, harvest was delayed by cool and wet spring conditions. July 4th was the peak of harvest for Oregon strawberries. Fresh strawberries are being sold at farmer's markets, fruit stands, and u-pick operations throughout the Willamette Valley.

**Onions: Area Planted and Harvested, and Yield Per Acre
by Season, State, and United States, 2008 and Forecasted 2009 ¹**

Season and State	Area Planted		Area Harvested		Yield per Acre	
	2008	2009	2008	2009	2008	2009
	<i>Acres</i>	<i>Acres</i>	<i>Acres</i>	<i>Acres</i>	<i>Cwt</i>	<i>Cwt</i>
Spring ²						
AZ	1,500	1,600	1,500	1,600	440	360
CA	6,700	6,200	6,500	6,000	440	430
GA	12,000	12,000	11,500	10,500	320	250
TX	11,000	10,300	8,900	8,900	270	435
Total	31,200	30,100	28,400	27,000	338	358
Summer						
Non-storage ²						
CA	7,800	6,500	7,600	6,300	540	580
NV	2,600	3,400	2,600	3,400	760	720
NM	7,000	5,500	6,600	5,400	500	640
TX	800	700	700	600	400	500
WA ³	1,900	2,000	1,900	2,000	360	375
Total	20,100	18,100	19,400	17,700	533	599
Storage ⁴						
CA ⁵	32,500	33,400	31,300	32,000	425	
CO	8,000	7,000	7,500	6,300	380	
ID	8,800	9,000	8,600	8,800	720	
MI	4,000	4,000	3,600	3,900	280	
NY	10,600	10,300	10,100	9,500	410	
OR						
Malheur	12,200	12,000	12,200	12,000	710	
Other	9,600	9,600	9,600	9,600	620	
WA	20,000	21,000	20,000	21,000	600	
WI	1,900	2,000	1,100	1,900	300	
Oth Sts ⁶	1,690	1,910	1,690	1,810	497	
Total	109,290	110,210	105,690	106,810	523	
Total Summer	129,390	128,310	125,090	124,510	525	
US	160,590	158,410	153,490	151,510	490	
Processed ⁷						

¹ Estimates for 2008 revised.

² Primarily fresh market.

³ Includes Walla Walla and other non-storage onions.

⁴ Yield and production for 2009 will be published October 2, 2009.

⁵ Primarily dehydrated and other processing.

⁶ OH and UT.

⁷ CA only, acreage and yield are not available.

**Onions: Production, Shrinkage and Loss by Season,
State, and United States, 2007-2008 and Production Forecasted 2009 ¹**

Season and State	Production			Shrinkage and Loss	
	2007	2008	2009	2007	2008
	<i>1,000 Cwt</i>	<i>1,000 Cwt</i>	<i>1,000 Cwt</i>	<i>1,000 Cwt</i>	<i>1,000 Cwt</i>
Spring ²					
AZ	495	660	576		
CA	3,015	2,860	2,580		
GA	3,240	3,680	2,625		
TX	3,120	2,403	3,872		
Total	9,870	9,603	9,653		
Summer					
Non-storage ²					
CA	4,407	4,104	3,654		
NV	2,072	1,976	2,448		
NM	3,550	3,300	3,456		
TX	400	280	300		
WA ³	570	684	750		
Total	10,999	10,344	10,608		
Storage ⁴					
CA ⁵	12,325	13,303		250	250
CO	3,157	2,850		470	400
ID	6,825	6,192		1,400	970
MI	988	1,008		200	200
NY	3,780	4,141		300	634
OR					
Malheur	9,828	8,662		1,310	870
Other	6,386	5,952		400	410
WA	13,725	12,000		1,800	1,200
WI	777	330		75	25
Oth Sts ⁶	978	840		90	113
Total	58,769	55,278		6,295	5,072
Summer	69,768	65,622		6,295	5,072
US	79,638	75,225		6,295	5,072
Processed ⁷	8,655	9,872			

¹ Estimates for 2008 revised. Shrinkage and loss for 2009 will be published in the *Vegetables 2009 Summary*, released January 2010.

² Primarily fresh market.

³ Includes Walla Walla and other non-storage onions.

⁴ Yield and production for 2009 will be published October 2, 2009.

⁵ Primarily dehydrated and other processing.

⁶ OH and UT.

⁷ CA only, shrinkage and loss not available.

**Onions: Price and Value by Season, State,
and United States, 2007-2008¹**

Season and State	Value Per Cwt		Total Value	
	2007	2008	2007	2008
	<i>Dollars</i>	<i>Dollars</i>	<i>1,000 Dollars</i>	<i>1,000 Dollars</i>
Spring ²				
AZ	12.00	10.50	5,940	6,930
CA	11.00	8.60	33,165	24,596
GA	35.90	29.50	116,316	108,560
TX	56.00	30.30	174,720	72,811
Total	33.40	22.20	330,141	212,897
Summer				
Non-storage ²				
CA	9.90	8.60	43,629	35,294
NV	19.00	16.00	39,368	31,616
NM	20.80	14.40	73,840	47,520
TX	29.50	33.40	11,800	9,352
WA ³	32.50	29.90	18,525	20,452
Total	17.00	13.90	187,162	144,234
Storage				
CA ⁴	8.53	9.01	102,959	117,587
CO	9.70	17.60	26,064	43,120
ID	2.70	7.40	14,648	38,643
MI	11.10	16.40	8,747	13,251
NY	11.10	16.80	38,628	58,918
OR				
Malheur	2.51	7.38	21,380	57,505
Other	5.97	6.72	35,736	37,242
WA	3.15	11.10	37,564	119,880
WI	10.50	14.20	7,371	4,331
Oth Sts ⁵	6.38	13.00	5,661	9,425
Total	5.69	9.96	298,758	499,902
Summer	7.66	10.60	485,920	644,136
US	11.10	12.20	816,061	857,033
Processed ⁶	8.30	9.14	71,837	90,230

¹ 2008 revised.

² Primarily fresh market.

³ Includes Walla Walla and other non-storage onions.

⁴ Primarily dehydrated and other processing.

⁵ OH and UT.

⁶ CA only.

Onion Crop Comments

Spring Onions: Production of spring onions in 2009 is forecast at 9.65 million cwt, up 1 percent from last year. The crop is produced on 27,000 harvested acres. The average yield is 358 cwt per acre, 20 cwt above 2008. In California, cool weather delayed harvest. However, sizing and quality of spring onions are reported to be good. In Georgia, the crop is in fair to good condition. Harvest was 85 percent complete by the end of May, which is slightly behind normal.

Summer, Non-Storage Onions: Production of non-storage onions is forecast at 10.6 million cwt, up 3 percent from last year. Harvested area covers 17,700 acres, down 9 percent from 2008. In California, yield looks good, however, water availability is a concern for onion growers. In Nevada, the onion crop is developing well due to the arrival of warm temperatures. The crop is reported to be in very good to excellent condition. In New Mexico, quality of the crop is reported to be very good.

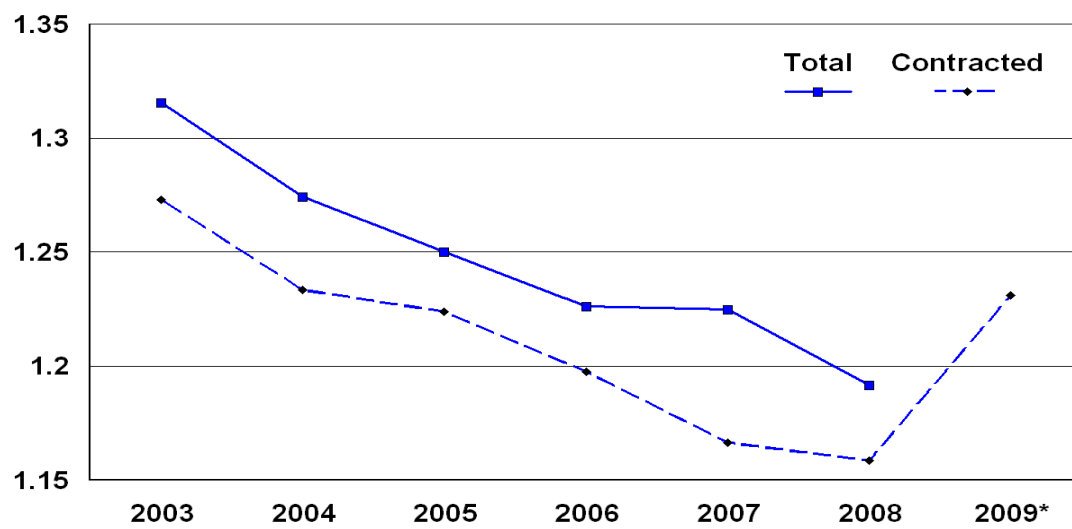
Summer, Storage Onions: Growers expect to harvest 106,810 acres of storage onions this year, up 1 percent from last year. In California, storage onion growers report a good growing season. In Colorado, planting was delayed slightly due to wet May conditions. However, the crop is reported to be in good to excellent condition. In Michigan, field preparation was delayed due to wet weather from late April into early May. Warm and dry conditions in mid-May allowed growers to get caught up. However, cool and cloudy conditions during the first week of June delayed plant growth. In Malheur County, Oregon, planting was delayed due to cool and wet spring conditions. Harvest is expected to be about two weeks behind schedule. In the "Other Area" of Oregon, planting was also delayed due to rainy and cool conditions during spring. However, the onion crop is reported to be in good condition. In Washington, the onion crop was five to seven days behind normal. Some insect related problems were reported but they were controlled by spraying. Overall, the onion crop looks good.

2008 Storage Onions, Revised: The final tally of 2008 storage onion production is 55.3 million cwt, down 6 percent from 2007. Harvested area, at 105,690 acres, is down 4 percent from 2007. Average yield of 523 cwt per acre is 13 cwt below 2007. The 2008 storage crop is valued at \$500 million, an increase of 67 percent from 2007. Average price per cwt increased from \$5.69 in 2007 to \$9.96 in 2008. With spring and non-storage summer onions added in, total value of the 2008 harvested onions is \$857 million, up 5 percent from 2007.

5 Major Processed Vegetables: Total and Contracted Acres

United States, 2003-2009

Millions



* Preliminary, total for 2009 not yet available.

**Processing Vegetables: Area Planted, Production, and Utilization
by Crop, United States, 2007-2008 and Forecasted 2009
(Domestic Units)**

Utilization and Crop	Area Planted			2009 Contract ¹
	2007 Total	2008		
		Total	Contract ¹	
	<i>Acres</i>	<i>Acres</i>	<i>Acres</i>	<i>Acres</i>
All Processing				
Snap Beans	209,470	206,770	203,200	200,000
Sweet Corn	380,100	370,750	363,800	393,850
Cucumbers for Pickles	104,600	98,900	79,140	93,800
Green Peas	208,300	216,100	216,100	216,300
Tomatoes	319,300	299,300	296,300	327,700
Total	1,221,770	1,191,820	1,158,540	1,231,650
Canning				
Snap Beans	132,300	132,630	129,810	137,300
Sweet Corn	180,000	182,200	177,800	195,000
Cucumbers for Pickles	104,600	98,900	79,140	93,800
Green Peas	80,800	77,500	77,500	85,950
Tomatoes	319,300	299,300	296,300	327,700
Total Canning	817,000	790,530	760,550	839,750
Freezing				
Snap Beans	77,170	74,140	73,390	62,700
Sweet Corn	200,100	188,550	186,000	198,850
Green Peas	127,500	138,600	138,600	130,350
Total Freezing	404,770	401,290	397,990	391,900
	Production			
	2007 Total	2008		2009 Contract ¹
		Total	Contract ¹	
	<i>Tons</i>	<i>Tons</i>	<i>Tons</i>	<i>Tons</i>
All Processing				
Green Peas	419,080	411,780	411,780	400,920
Tomatoes	12,659,890	12,305,820	12,174,820	13,911,400
Total	13,078,970	12,717,600	12,586,600	14,312,320

¹ Includes acreage from major brokers.

**Processing Vegetables: Area Planted, Production, and Utilization
by Crop, United States, 2007-2008 and Forecasted 2009
(Metric Units)**

Utilization and Crop	Area Planted			
	2007 Total	2008		2009 Contract ¹
		Total	Contract ¹	
	<i>Hectares</i>	<i>Hectares</i>	<i>Hectares</i>	<i>Hectares</i>
All Processing				
Snap Beans	84,770	83,680	82,230	80,940
Sweet Corn	153,820	150,040	147,230	159,390
Cucumbers for Pickles	42,330	40,020	32,030	37,960
Green Peas	84,300	87,450	87,450	87,530
Tomatoes	129,220	121,120	119,910	132,620
Total ^{2 3}	494,440	482,320	468,850	498,440
Canning				
Snap Beans	53,540	53,670	52,530	55,560
Sweet Corn	72,840	73,730	71,950	78,910
Cucumbers for Pickles	42,330	40,020	32,030	37,960
Green Peas	32,700	31,360	31,360	34,780
Tomatoes	129,220	121,120	119,910	132,620
Total Canning ²	330,630	319,920	307,790	339,840
Freezing				
Snap Beans	31,230	30,000	29,700	25,370
Sweet Corn	80,980	76,300	75,270	80,470
Green Peas	51,600	56,090	56,090	52,750
Total Freezing ²	163,810	162,400	161,060	158,600
	Production			
	2007 Total	2008		2009 Contract ¹
		Total	Contract ¹	
	<i>Metric Tons</i>	<i>Metric Tons</i>	<i>Metric Tons</i>	<i>Metric Tons</i>
All Processing				
Green Peas	380,180	373,560	373,560	363,710
Tomatoes	11,484,800	11,163,590	11,044,750	12,620,140
Total ²	11,864,980	11,537,150	11,418,310	12,983,850

¹ Includes acreage from major brokers.

² Totals may not add due to rounding.

³ Utilization may not add to total crop because of rounding.

**Snap Beans for Processing: Area Planted and Contracted
by State and United States, and Utilization by United States,
2007-2008 and Forecasted Area 2009**

State and Utilization	Area Planted			
	2007 Total	2008		2009 Contract ¹
		Total	Contract ¹	
	<i>Acres</i>	<i>Acres</i>	<i>Acres</i>	<i>Acres</i>
FL ²				1,600
IL	13,400	12,700	12,700	13,600
IN	5,300	5,300	5,300	10,200
MI	18,500	15,500	15,500	18,000
MN ²		4,900	4,900	7,500
NY ²		21,500	21,500	20,100
OR	19,100	18,700	18,700	17,600
PA	10,900	10,700	10,700	9,800
WI	74,000	82,300	80,700	78,200
Oth Sts ^{3 4}	68,270	35,170	33,200	23,400
US	209,470	206,770	203,200	200,000
Canning	132,300	132,630	129,810	137,300
Freezing	77,170	74,140	73,390	62,700

¹ Includes acreage from major brokers.

² Missing data not published to avoid disclosure of individual operations.

³ 2007 - CA, DE, FL, GA, MD, MN, NJ, NY, NC, TX, and VA.

2008 - CA, DE, FL, GA, MD, NJ, NC, TX, and VA.

2009 - CA, DE, GA, MD, NJ, NC, TX, and VA.

⁴ Seasonal forecasts for AR and MO are not available. Estimates to be published in the *Vegetables 2009 Summary*, released in January 2010.

**Sweet Corn for Processing: Area Planted and Contracted
by State and United States, and Utilization by United States,
2007-2008 and Forecasted Area 2009**

State and Utilization	Area Planted			
	2007 Total	2008		2009 Contract ¹
		Total	Contract ¹	
	<i>Acres</i>	<i>Acres</i>	<i>Acres</i>	<i>Acres</i>
MD ²	6,300	6,900	6,900	
MN	122,100	127,900	127,900	136,100
OR	21,900	18,700	18,700	24,900
WA	84,500	68,900	68,900	84,600
WI	87,600	88,900	88,900	81,300
Oth Sts ³	57,700	59,450	52,500	66,950
US	380,100	370,750	363,800	393,850
Canning	180,000	182,200	177,800	195,000
Freezing	200,100	188,550	186,000	198,850

¹ Includes acreage from major brokers.

² 2009 data not published to avoid disclosure of individual operations.

³ 2007 - DE, ID, IL, IA, NJ, NY, PA, TN, and VA.

2008 - DE, ID, IL, IA, NJ, NY, PA, TN, and VA.

2009 - DE, ID, IL, IA, MD, NJ, NY, and PA.

**Cucumbers for Pickles: Area Planted and Contracted by State
and United States, 2007-2008 and Forecasted Area 2009**

State	Area Planted					
	2007 Total	2008		2009 Contract ¹		
		Total	Contract ¹	Early	Late	All
	<i>Acres</i>	<i>Acres</i>	<i>Acres</i>	<i>Acres</i>	<i>Acres</i>	<i>Acres</i>
FL ²	6,800	7,000	4,000			7,600
IN	1,700	1,700	1,700		1,500	1,500
MI	35,500	31,000	23,700	32,000		32,000
NC ²	12,100	10,700	8,100			8,900
OH	2,800	3,300	2,000	2,400		2,400
SC ²	3,000	2,500	2,500			2,500
TX	7,000	7,500	7,200	5,600	1,400	7,000
WI	6,100	7,100	7,100	6,300		6,300
Oth Sts ³	29,600	28,100	22,840	39,100	5,500	25,600
US	104,600	98,900	79,140	85,400	8,400	93,800

¹ Includes acreage from major brokers.

² Early and late acreage not published to avoid disclosure of individual operations.

³ 2007 - AL, CA, DE, GA, MD, and MO.

2008 - AL, CA, DE, GA, MD, and MO.

2009 - AL, CA, DE, GA, MD, and MO.

**Green Peas for Processing: Area Planted, Harvested, Yield and Production
and Contracted by State and United States, and Utilization by United States,
2007-2008 and Forecasted Area 2009**

State and Utilization	Area Planted						
	2007 Total		2008			2009 Contract ¹	
			Total	Contract ¹			
	<i>Acres</i>		<i>Acres</i>		<i>Acres</i>		<i>Acres</i>
DE	5,500		5,600		5,600		5,600
MN	75,300		74,800		74,800		76,700
OR	17,600		18,700		18,700		17,100
WA	38,900		41,900		41,900		45,400
WI	38,500		40,700		40,700		41,300
Oth Sts ²	32,500		34,400		34,400		30,200
US	208,300		216,100		216,100		216,300
Canning	80,800		77,500		77,500		85,950
Freezing	127,500		138,600		138,600		130,350
	Area Harvested						
	2007 Total		2008			2009 Contract ¹	
Total			Contract ¹				
	<i>Acres</i>		<i>Acres</i>		<i>Acres</i>		<i>Acres</i>
DE	5,400		5,600		5,600		5,600
MN	73,600		73,100		73,100		74,700
OR	17,600		18,000		18,000		16,300
WA	38,500		40,100		40,100		45,400
WI	37,300		40,100		40,100		40,400
Oth Sts ²	29,600		32,800		32,800		29,200
US	202,000		209,700		209,700		211,600
	Yield per Acre			Production			
	2007 Total	2008 Total	2009 Contract ¹	2007 Total	2008		2009 Contract ¹
					Total	Contract ¹	
	<i>Tons</i>	<i>Tons</i>	<i>Tons</i>	<i>Tons</i>	<i>Tons</i>	<i>Tons</i>	<i>Tons</i>
DE	1.90	1.80	1.90	10,260	10,080	10,080	10,640
MN	1.75	1.70	1.40	128,950	124,470	124,470	104,580
OR	2.18	1.85	2.00	38,300	33,320	33,320	32,600
WA	2.74	2.58	2.60	105,490	103,460	103,460	118,040
WI	2.17	1.90	2.11	80,950	76,060	76,060	85,240
Oth Sts ²	1.86	1.96	1.71	55,130	64,390	64,390	49,820
US	2.07	1.96	1.89	419,080	411,780	411,780	400,920

¹ Includes acreage from major brokers.

² 2007 - IL, MD, NJ, and NY.

2008 - IL, MD, NJ, and NY.

2009 - IL, MD, NJ, and NY.

**Tomatoes for Processing: Area Planted, Production and Contracted
by State and United States, 2007-2008 and Forecasted 2009**

State	Area Planted			
	2007 Total	2008		2009 Contract ¹
		Total	Contract ¹	
	<i>Acres</i>	<i>Acres</i>	<i>Acres</i>	<i>Acres</i>
CA	301,000	281,000	278,000	308,000
IN	8,500	9,000	9,000	9,700
MI	3,400	3,400	3,400	3,400
OH	6,400	5,900	5,900	6,600
US	319,300	299,300	296,300	327,700
	Production			
	2007 Total	2008		2009 Contract ¹
		Total	Contract ¹	
	<i>Tons</i>	<i>Tons</i>	<i>Tons</i>	<i>Tons</i>
CA	12,082,000	11,822,000	11,691,000	13,300,000
IN	294,000	249,000	249,000	307,400
MI	112,200	102,000	102,000	115,000
OH	171,690	132,820	132,820	189,000
US	12,659,890	12,305,820	12,174,820	13,911,400

¹ Includes acreage from major brokers.

Processing Crop Comments

Snap Beans: Processors contracted 200,000 acres for harvest in 2009, down 2 percent from the previous year. Canning area, at 137,300 acres, is up 6 percent from last year. Area contracted for freezing, at 62,700 acres, is down 15 percent. In Wisconsin, crop progress is near normal. In Michigan, the snap bean crop is developing well with no major problems reported. In Oregon, spring showers delayed field preparation and planting. In Pennsylvania, wet weather and cool temperatures delayed spring planting.

Sweet Corn: Processors contracted 393,850 acres for harvest in 2009, up 8 percent from last year. Canning area, at 195,000 acres, is up 10 percent from 2008. Area contracted for freezing, at 198,850 acres, is up 7 percent from last year. In Minnesota, as of June 21, sweet corn planting was 93 percent complete. In Wisconsin, the sweet corn crop is progressing normally.

Cucumbers for Pickles: Pickle processors contracted 93,800 acres for harvest in 2009, up 19 percent from last year. Michigan cucumbers are progressing normally. In Indiana, planting was delayed due to excessive rainfall during the first half of June. Ohio's crop was 91 percent planted by June 21. In Wisconsin, crop development is progressing at a normal rate.

Green Peas: Contracted production is forecast at 400,920 tons, down 3 percent from last year. Area for harvest, at 211,600 acres, is up 1 percent from 2008. The expected yield, at 1.89 tons per acre, is 0.07 tons less than a year ago. Area contracted for planting, at 216,300 acres, is virtually unchanged from 2008. Area contracted for canning, at 85,950 acres, is up 11 percent from last year. Area contracted for freezing, at 130,350 acres, is down 6 percent from 2008. In Minnesota, 97 percent of planting was complete as of May 31. In Wisconsin, the green pea crop is progressing at a normal rate. In Oregon, spring showers delayed planting activities.

Tomatoes: Contracted production is forecast at 13.9 million tons, up 14 percent from last year. Planted area contracted, at 327,700 acres, is up 11 percent from 2008. In California, processing tomato fields were planted in March. In Indiana, planting was delayed due to excessive rainfall during the first few weeks in June. Flooding was reported in some fields in the central and southern areas of the State. In Michigan, the tomato crop started to emerge by the first week of June. In Ohio, planting was 99 percent complete as of June 21.

**Vegetables for Fresh Market: Prices Received Monthly,
by States and United States, 2006-2008**

State and Year	Jan	Feb	Mar	Apr	May	Jun
Spring Onions						
	<i>Dollars per Cwt</i>	<i>Dollars per Cwt</i>	<i>Dollars per Cwt</i>	<i>Dollars per Cwt</i>	<i>Dollars per Cwt</i>	<i>Dollars per Cwt</i>
CA						
2006				10.70	9.10	9.30
2007				15.60	7.40	14.90
2008				6.83	7.70	9.30
GA						
2006					22.70	25.80
2007					38.20	29.80
2008					30.10	27.10
TX						
2006				19.10	18.40	26.40
2007				72.70	31.10	42.00
2008				29.40	33.60	27.10
US						
2006				18.40	17.60	19.80
2007				66.70	24.10	24.50
2008				28.00	23.90	17.60
Summer Onions Non-Storage						
CA						
2006						
2007						
2008						
NM						
2006						13.10
2007						24.90
2008						13.50
TX						
2006						
2007						
2008						
WA ¹						
2006						23.30
2007						
2008						
US						
2006						14.40
2007						24.90
2008						
Summer Onions Storage						
CA						
2006	6.40	11.70	10.60			
2007						
2008						
CO						
2006	14.50	14.10				
2007	33.70					
2008	9.00	7.70				
ID ¹						
2006	7.60	7.00	6.60	7.30		
2007	23.20	27.20	35.70	15.40		
2008	2.30	1.80	1.30	1.90		
MI						
2006	14.20	13.40	14.80			
2007	20.00	26.20	32.40			
2008	10.10	10.20	10.30			

See footnote(s) at end of table.

--continued

**Vegetables for Fresh Market: Prices Received Monthly,
by States and United States, 2006-2008, (continued)**

State and Year	Jul	Aug	Sep	Oct	Nov	Dec
Spring Onions						
	<i>Dollars per Cwt</i>	<i>Dollars per Cwt</i>	<i>Dollars per Cwt</i>	<i>Dollars per Cwt</i>	<i>Dollars per Cwt</i>	<i>Dollars per Cwt</i>
CA						
2006						
2007						
2008						
GA						
2006	30.30					
2007	39.00					
2008	31.30					
TX						
2006						
2007						
2008						
US						
2006	30.30					
2007	39.00					
2008	31.30					
Summer Onions Non-Storage						
CA						
2006	12.40	12.10	14.10			
2007	11.50	8.50	5.50			
2008	8.85	8.20	8.80			
NM						
2006	20.50	20.30				
2007	22.00	13.30				
2008	14.60					
TX						
2006	34.20	33.30				
2007		29.50				
2008	32.70	34.00				
WA ¹						
2006	21.60	23.40				
2007	33.40	29.30				
2008	29.90					
US						
2006	15.90	14.40	14.10			
2007	16.50	15.70	5.50			
2008	15.20	8.20	8.80			
Summer Onions Storage						
CA						
2006	12.40	12.10	14.10			
2007	11.50	8.50	5.50			
2008	8.85	8.20	8.80			
CO						
2006		19.00	17.40	16.70	17.20	23.00
2007		12.30	10.70	9.40	8.70	8.70
2008		18.90	20.40	20.20	15.50	13.70
ID ¹						
2006		12.10	12.20	8.70	10.50	17.00
2007		5.80	4.60	3.60	3.40	3.10
2008		7.10	10.40	9.50	8.10	7.20
MI						
2006			17.50	13.50	13.50	12.70
2007		17.10	15.00	9.90	10.30	10.30
2008			17.50	16.30	15.10	14.00

See footnote(s) at end of table.

--continued

**Vegetables for Fresh Market: Prices Received Monthly,
by States and United States, 2006-2008, (continued)**

State and Year	Jan	Feb	Mar	Apr	May	Jun
	Summer Onions Storage					
	<i>Dollars per Cwt</i>	<i>Dollars per Cwt</i>	<i>Dollars per Cwt</i>	<i>Dollars per Cwt</i>	<i>Dollars per Cwt</i>	<i>Dollars per Cwt</i>
NY						
2006	17.60	16.80	13.10	13.60		
2007	18.20	22.00	27.20	37.90	38.60	
2008	10.80	10.40	9.70	9.00	9.00	9.00
OR-Malheur ¹						
2006	7.30	6.70	6.40			
2007	23.40	26.70	35.90			
2008	2.32	1.75	1.34	1.77		
OR-Other ¹						
2006	6.60	6.50	6.50			
2007	13.80	15.00	20.80			
2008	5.26	4.92	4.51	5.07		
WA ¹						
2006	8.00	6.60	5.70	6.10	5.60	10.90
2007	25.90	31.50	43.40	35.90		
2008	3.50	2.50	1.20	2.50		
US						
2006	8.53	8.19	7.60	8.55	5.60	10.90
2007	22.10	26.20	35.00	33.30	38.60	
2008	4.13	3.15	2.53	3.26		
	All Summer Onions					
US						
2006	8.53	8.19	7.60	8.55	5.60	14.10
2007	22.10	26.20	35.00	33.30	38.60	24.90
2008	4.13	3.15	2.53	3.26		
	All Onions					
US						
2006	8.53	8.19	7.60	15.20	16.30	17.80
2007	22.10	26.20	35.00	55.20	24.20	24.60
2008	4.13	3.15	2.53	10.60	23.90	17.60

See footnote(s) at end of table.

--continued

**Vegetables for Fresh Market: Prices Received Monthly,
by States and United States, 2006-2008, (continued)**

State and Year	Jul	Aug	Sep	Oct	Nov	Dec
	Summer Onions Storage					
	<i>Dollars per Cwt</i>	<i>Dollars per Cwt</i>	<i>Dollars per Cwt</i>	<i>Dollars per Cwt</i>	<i>Dollars per Cwt</i>	<i>Dollars per Cwt</i>
NY						
2006		15.30	15.50	12.70	13.20	15.50
2007			15.90	13.50	12.00	10.70
2008			20.80	16.60	16.70	16.00
OR-Malheur ¹						
2006		12.90	11.80	8.70	10.70	17.30
2007		5.87	4.23	3.00	2.82	2.59
2008		7.20	9.85	9.47	8.03	6.99
OR-Other ¹						
2006		7.40	6.70	6.30	7.30	9.70
2007		6.94	6.81	6.43	5.01	5.48
2008		8.54	6.76	6.86	7.47	7.34
WA ¹						
2006	13.50	12.40	9.90	10.80	10.50	17.30
2007	11.30	4.70	2.80	2.40	2.40	3.35
2008	8.10	9.00	12.00	12.10	8.00	8.60
US						
2006	12.50	13.00	12.30	10.40	11.40	16.60
2007	11.50	9.08	5.57	4.47	4.70	4.39
2008	8.71	8.58	10.60	10.70	10.50	13.40
	All Summer Onions					
US						
2006	14.20	13.30	12.40	10.40	11.40	16.60
2007	14.00	10.80	5.57	4.47	4.70	4.39
2008	12.00	8.52	10.50	10.70	10.50	13.40
	All Onions					
US						
2006	14.90	13.30	12.40	10.40	11.40	16.60
2007	15.40	10.80	5.57	4.47	4.70	4.39
2008	13.10	8.52	10.50	10.70	10.50	13.40

¹ Equivalent packinghouse door returns.

ACCESS TO REPORTS!!

For your convenience, there are several ways to obtain NASS reports, data products, and services:

INTERNET ACCESS

All NASS reports are available free of charge. For free access, connect to the Internet and go to the NASS Home Page at: **www.nass.usda.gov**.

E-MAIL SUBSCRIPTION

All NASS reports are available by subscription free of charge direct to your e-mail address. Starting with the NASS Home Page at **www.nass.usda.gov**, under the right navigation, *Receive reports by Email*, click on **National** or **State**. Follow the instructions on the screen.

PRINTED REPORTS OR DATA PRODUCTS

CALL OUR TOLL-FREE ORDER DESK: 800-999-6779 (U.S. and Canada)
Other areas, please call 703-605-6220 FAX: 703-605-6900
(Visa, MasterCard, check, or money order acceptable for payment.)

ASSISTANCE

For **assistance** with general agricultural statistics or further information about NASS or its products or services, contact the **Agricultural Statistics Hotline** at **800-727-9540**, 7:30 a.m. to 4:00 p.m. ET, or e-mail: **nass@nass.usda.gov**.

The U.S. Department of Agriculture (USDA) prohibits discrimination in all its programs and activities on the basis of race, color, national origin, age, disability, and where applicable, sex, marital status, familial status, parental status, religion, sexual orientation, genetic information, political beliefs, reprisal, or because all or a part of an individual's income is derived from any public assistance program. (Not all prohibited bases apply to all programs.) Persons with disabilities who require alternative means for communication of program information (Braille, large print, audiotape, etc.) should contact USDA's TARGET Center at (202) 720-2600 (voice and TDD).

To file a complaint of discrimination, write to USDA, Director, Office of Civil Rights, 1400 Independence Avenue, S.W., Washington, D.C. 20250-9410, or call (800) 795-3272 (voice) or (202) 720-6382 (TDD). USDA is an equal opportunity provider and employer.