

Vegetables

Released September 5, 2003, by the National Agricultural Statistics Service (NASS), Agricultural Statistics Board, U.S. Department of Agriculture. For information on "*Vegetables*" call Biz Wallingsford at (202) 720-2157, office hours 9:00 a.m. to 5:30 p.m. ET.

Contracted Processing Production Virtually Unchanged from Last Year

The 2003 contracted processing vegetable production for the four major processing crops is forecast at 15.6 million tons, virtually unchanged from last year's comparable States but 16 percent more than comparable States two years ago. Production of processing tomatoes, at 11.1 million tons, fell 3 percent from comparable States in 2002 but increased 20 percent from comparable States in 2001. Snap bean production, at 755,830 tons, is down 3 percent from last year's comparable States production. Sweet corn production, at 3.31 million tons, is up 7 percent from last year, and green pea production, at 411,820 tons, is up 19 percent from 2002. Contracted acreage for harvest of the four major processing vegetable crops, at 1.16 million acres, is 2 percent more than comparable States in 2002 and 3 percent more than comparable States for 2001.

Asparagus Production Down 4 Percent

Production of the 2003 asparagus crop is forecast at 1.79 million cwt, down 4 percent from 2002 and 12 percent below comparable States in 2001. Acres harvested, at 54,000, are down 18 percent from last year and 21 percent below comparable States two years earlier. Fresh production of 1.14 million cwt, decreased 10 percent from 2002 and is 15 percent below comparable States in 2001. Processed production, at 32,450 tons, is up 8 percent from last year but 5 percent below comparable States two years ago.

Spring Onion Production Down 1 Percent

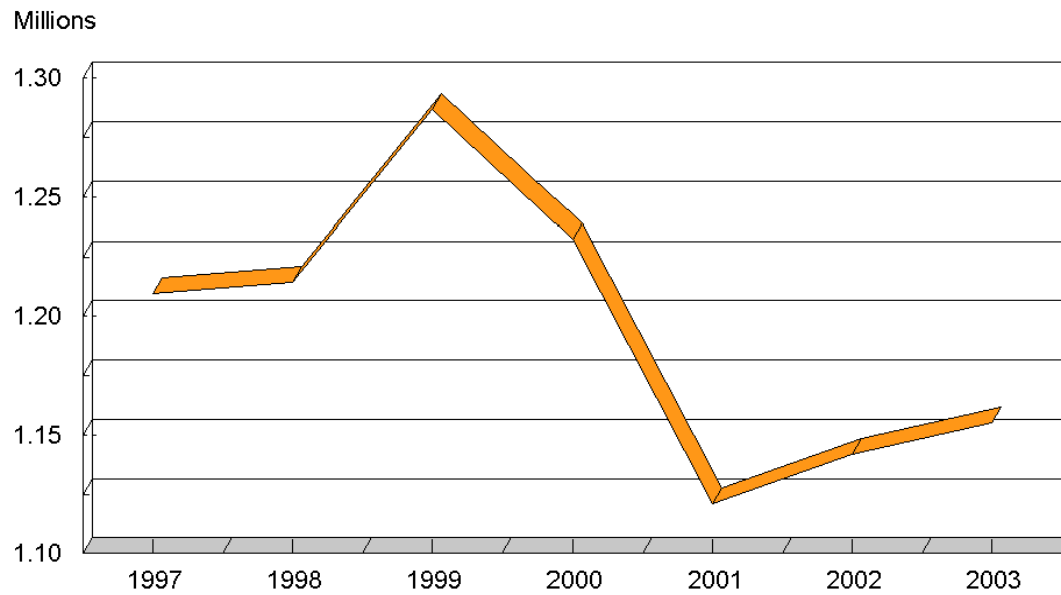
The end-of-season spring onion production estimate, at 9.58 million cwt, is down 1 percent from last year. Acres harvested, at 31,500, are down 8 percent from a year ago, while yield, at 304 cwt per acre, is up 20 cwt per acre. The value of the spring crop is estimated at 288 million dollars, 49 percent more than last year.

Contents

	Processing	Page
By Crops		
Area and Production		4
Principle Vegetables by State		
Beans, Snap		6
Corn, Sweet		7
Tomatoes		8
Processing Crop Comments		9
	Fresh Market	
Asparagus		10
Crop Comments		12
Onions, Spring		13
Crop Comments		14

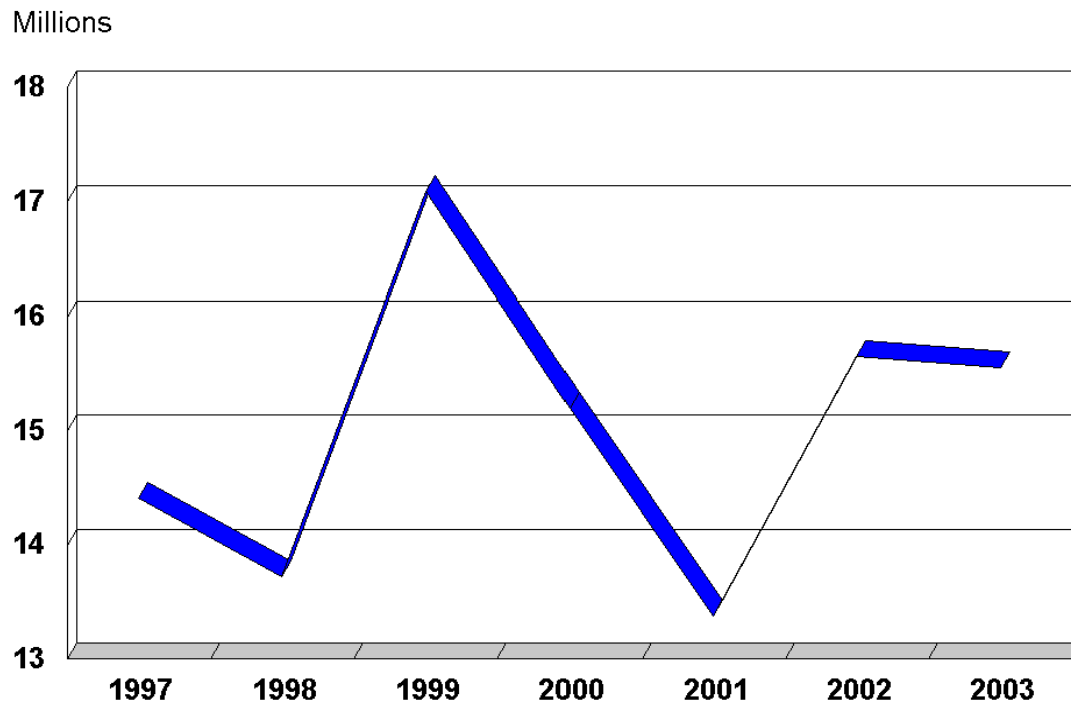
4 Major Processed Vegetables: Contracted Area Harvested

United States, 1997-2003 (Acres)



4 Major Processed Vegetables: Contracted Production

United States, 1997-2003 (Tons)



**Processing Vegetables: Area Harvested and Production
by Crop, United States, 2001-2002 and Forecasted 2003
(Domestic Units)**

Crop	Area Harvested			
	2001 Total	2002		2003 Contract ¹
		Total	Contract ¹	
	<i>Acres</i>	<i>Acres</i>	<i>Acres</i>	<i>Acres</i>
All Processing				
Snap Beans	195,480	210,100	205,700	187,800
Sweet Corn	446,450	419,900	419,330	437,000
Green Peas ²	211,140	211,300	211,300	231,100
Tomatoes	274,860	311,800	305,800	299,500
Total	1,127,930	1,153,100	1,142,130	1,155,400
Cucumbers for Pickles ³	108,260	118,900	77,400	
Total 5 Vegetables	1,236,190	1,272,000	1,219,530	
	Production			
	2001 Total	2002		2003 Contract ¹
		Total	Contract ¹	
	<i>Tons</i>	<i>Tons</i>	<i>Tons</i>	<i>Tons</i>
All Processing				
Snap Beans	695,190	831,260	816,100	755,830
Sweet Corn	3,142,840	3,084,290	3,080,390	3,309,910
Green Peas ²	390,220	347,090	347,090	411,820
Tomatoes	9,248,720	11,656,820	11,407,220	11,081,030
Total	13,476,970	15,919,460	15,650,800	15,558,590
Cucumbers for Pickles ³	581,540	617,300	391,270	
Total 5 Vegetables	14,058,510	16,536,760	16,042,070	

¹ Includes acreage from major brokers.

² Carried forward from earlier forecast.

³ Cucumbers for pickles will be published in the Vegetable 2003 Summary, released January 2004.

**Processing Vegetables: Area Harvested and Production
by Crop, United States, 2001-2002 and Forecasted 2003
(Metric Units)**

Crop	Area Harvested			
	2001 Total	2002		2003 Contract ¹
		Total	Contract ¹	
	<i>Hectares</i>	<i>Hectares</i>	<i>Hectares</i>	<i>Hectares</i>
All Processing				
Snap Beans	79,110	85,030	83,240	76,000
Sweet Corn	180,670	169,930	169,700	176,850
Green Peas ²	85,450	85,510	85,510	93,520
Tomatoes	111,230	126,180	123,750	121,200
Total ³	456,460	466,650	462,210	467,580
Cucumbers for Pickles ⁴	43,810	48,120	31,320	
Total 5 Vegetables ³	500,270	514,770	493,530	
	Production			
	2001 Total	2002		2003 Contract ¹
		Total	Contract ¹	
	<i>Metric Tons</i>	<i>Metric Tons</i>	<i>Metric Tons</i>	<i>Metric Tons</i>
All Processing				
Snap Beans	630,660	754,100	740,350	685,670
Sweet Corn	2,851,120	2,798,010	2,794,470	3,002,680
Green Peas ²	354,000	314,870	314,870	373,590
Tomatoes	8,390,250	10,574,830	10,348,400	10,052,490
Total ³	12,226,040	14,441,820	14,198,090	14,114,440
Cucumbers for Pickles ⁴	527,560	560,000	354,950	
Total 5 Vegetables ³	12,753,600	15,001,820	14,553,050	

¹ Includes acreage from major brokers.

² Carried forward from earlier forecast.

³ Totals may not add due to rounding.

⁴ Cucumbers for pickles will be published in the Vegetable 2003 Summary, released January 2004.

**Snap Beans for Processing: Area Harvested, Yield, and Production
by State and United States, 2001-2002 and Forecasted 2003**

State	Area Harvested						
	2001 Total		2002				2003 Contract ¹
			Total		Contract ¹		
	<i>Acres</i>		<i>Acres</i>		<i>Acres</i>		<i>Acres</i>
DE							2,800
IL	12,200		20,600		18,500		
IN	6,500		6,000		6,000		6,800
MD							1,600
MI	16,000		16,000		16,000		13,500
NY	22,300		21,300		21,300		24,300
OR	19,300		18,700		18,700		16,700
PA	7,900		7,500		7,500		8,400
WI	68,500		72,200		71,800		66,200
Oth Sts ^{2 3}	42,780		47,800		45,900		47,500
US ³	195,480		210,100		205,700		187,800
	Yield per Acre			Production			
	2001 Total	2002 Total	2003 Contract ¹	2001 Total	2002		2003 Contract ¹
					Total	Contract ¹	
	<i>Tons</i>	<i>Tons</i>	<i>Tons</i>	<i>Tons</i>	<i>Tons</i>	<i>Tons</i>	<i>Tons</i>
DE			2.50				7,000
IL	3.36	3.02		40,960	62,300	55,270	
IN	2.37	2.98	3.15	15,390	17,860	17,860	21,420
MD			2.50				4,000
MI	3.50	3.75	3.40	56,000	60,030	60,030	45,900
NY	2.96	2.99	3.95	66,110	63,590	63,590	95,990
OR	6.30	6.22	6.30	121,510	116,250	116,250	105,210
PA	2.87	2.71	2.90	22,690	20,340	20,340	24,360
WI	3.28	4.39	4.40	224,860	317,070	314,810	291,280
Oth Sts ^{2 3}	3.45	3.64	3.38	147,670	173,820	167,950	160,670
US ³	3.56	3.96	4.02	695,190	831,260	816,100	755,830

¹ Includes acreage from major brokers.

² 2001 - AR, CA, DE, FL, GA, MD, MN, MO, NJ, NC, OH, TN, TX, and VA.

2002 - AR, CA, DE, FL, GA, MD, MN, MO, NJ, NC, TX, and VA.

2003 - CA, FL, GA, IL, MN, NJ, NC, TX, and VA.

³ OH and TN estimates discontinued in 2002. Seasonal forecasts for AR and MO are not available. Estimates to be published in the January 2004 annual.

**Sweet Corn for Processing: Area Harvested, Yield, and Production
by State and United States, 2001-2002 and Forecasted 2003**

State	Area Harvested						
	2001 Total		2002				2003 Contract ¹
			Total	Contract ¹			
	<i>Acres</i>		<i>Acres</i>		<i>Acres</i>		<i>Acres</i>
DE							18,400
IL	17,500		13,800		13,800		
MN	130,200		136,900		136,900		140,000
NY	29,200		16,800		16,700		17,700
OR	29,100		33,000		33,000		31,100
PA	650		1,400		1,400		1,200
WA	95,100		95,300		95,230		97,800
WI	98,800		84,200		83,800		88,100
Oth Sts ²	45,900		38,500		38,500		42,700
US	446,450		419,900		419,330		437,000
	Yield per Acre			Production			
	2001 Total	2002 Total	2003 Contract ¹	2001 Total	2002		2003 Contract ¹
					Total	Contract ¹	
	<i>Tons</i>	<i>Tons</i>	<i>Tons</i>	<i>Tons</i>	<i>Tons</i>	<i>Tons</i>	<i>Tons</i>
DE			6.00				110,400
IL	6.66	5.80		116,610	80,040	80,040	
MN	6.10	6.46	6.80	794,720	884,630	884,630	952,000
NY	5.50	5.30	6.65	160,600	89,040	88,510	117,710
OR	7.80	7.99	9.00	226,870	263,580	263,580	279,900
PA	7.51	4.76	5.30	4,880	6,660	6,660	6,360
WA	8.98	9.44	9.20	853,560	899,200	898,430	899,760
WI	6.66	7.08	7.20	657,640	596,050	593,450	634,320
Oth Sts ²	7.15	6.89	7.25	327,960	265,090	265,090	309,460
US	7.04	7.35	7.57	3,142,840	3,084,290	3,080,390	3,309,910

¹ Includes acreage from major brokers.

² 2001 - DE, ID, IA, MD, NJ, and TN.

2002 - DE, ID, IA, MD, NJ, and TN.

2003 - ID, IL, IA, MD, NJ, and TN.

**Tomatoes for Processing: Area Harvested, Yield, and Production
by State and United States, 2001-2002 and Forecasted 2003**

State	Area Harvested						
	2001 Total		2002				2003 Contract ¹
			Total	Contract ¹			
	<i>Acres</i>		<i>Acres</i>		<i>Acres</i>		<i>Acres</i>
CA	254,000		291,000		285,000		279,000
IN	8,000		8,100		8,100		8,400
MI	3,100		3,200		3,200		3,100
OH	6,200		6,300		6,300		6,300
Oth Sts ²	3,560		3,200		3,200		2,700
US ³	274,860		311,800		305,800		299,500
	Yield per Acre			Production			
	2001 Total	2002 Total	2003 Contract ¹	2001 Total	2002		2003 Contract ¹
					Total	Contract ¹	
	<i>Tons</i>	<i>Tons</i>	<i>Tons</i>	<i>Tons</i>	<i>Tons</i>	<i>Tons</i>	<i>Tons</i>
CA	34.02	37.99	37.63	8,640,140	11,056,000	10,806,400	10,500,000
IN	31.39	31.66	25.50	251,120	256,450	256,450	214,200
MI	34.00	35.00	35.00	105,400	112,000	112,000	108,500
OH	26.55	23.75	28.90	164,610	149,630	149,630	182,070
Oth Sts ²	24.56	25.86	28.24	87,450	82,740	82,740	76,260
US ³	33.65	37.39	37.00	9,248,720	11,656,820	11,407,220	11,081,030

¹ Includes acreage from major brokers.

² 2001 - DE, MD, NJ, PA, and VA.

2002 - MD, NJ, and PA.

2003 - NJ and PA.

³ Seasonal forecasts for MD are not available. Estimates to be published in the January 2004 annual. DE and VA estimates discontinued in 2002.

Snap Beans: Contracted production of snap beans is forecast at 755,830 tons, down 3 percent from comparable States last year. Based on comparable States between 2002 and 2003, contracted harvested acreage decreased 4 percent while yield per acre remained the same. Delaware and Maryland snap beans have experienced above average rainfall this season resulting in more disease and insect problems than usual. The snap bean crop is in fair to poor condition. Illinois processors reported wet conditions during blossom time. In Indiana, some acreage was damaged in early July by excessive rain. Conditions in August became dry with little or no precipitation. Michigan's harvest began in mid-August. Early plantings looked good but disease problems were noticed in later plantings. In New York, frequent rains since planting have helped crop development and the crop is in fair to good condition. Oregon's weather this season, a very wet spring followed by a hot, dry summer, has helped grower's produce a bumper crop. Pennsylvania's harvest is on schedule. Growing conditions in Wisconsin have been ideal for the crop.

Sweet Corn: Contracted sweet corn production is forecast at 3.31 million tons, up 7 percent from last year. A 4 percent increase in contracted harvested acreage is accompanied by a yield increase of 0.22 tons per acre when comparing the 2003 season to 2002. In Delaware and Maryland rainfall has been above average resulting in more disease and insect problems than usual this season. The Illinois crop is looking good at this point with ideal growing conditions reported. Planting of the Minnesota sweet corn crop is on schedule with drier than normal conditions reported in most areas of the State. As of August 25, harvest was 46 percent complete. New York producers are expecting favorable yields this season. Frequent rainfall has helped the crop and conditions are fair to good. Oregon and Washington processors expect a good crop. However, extreme high temperatures are compressing the harvest schedule and some Oregon producers reported stunted ears caused by the heat stress. Pennsylvania's weather this season has been favorable for the crop resulting in higher expected yields compared to last year. Processors in Wisconsin comment the crop is looking very good. Most acreage is irrigated and therefore has not been affected by the lack of rainfall since late July.

Tomatoes: Contracted tomato production is forecast at 11.1 million tons, 3 percent below last year's comparable States. Based on comparable States between 2002 and 2003, a 2 percent decrease in contracted acreage was accompanied by a yield decrease of 0.33 tons per acre. Hot weather in California has accelerated maturity and caused some sunburned fruit. More recently, rainfall has delayed harvest and caused some mold problems. Indiana had excessive rainfall in early July which caused flooding and bacteria problems into mid-July. Toward the end of August, conditions became dry with little or no precipitation. Michigan processors began harvesting the last week of August. Humid weather during the season has led to some disease problems in the crop. Ohio's harvest began in late August. Temperatures have been below normal and conditions have been wet most of the summer.

**Asparagus for Fresh Market and Processing: Area Planted and Harvested,
Yield, Production, and Value by State and United States, 2001-2003**

State	Area Planted			Area Harvested		
	2001	2002	2003	2001	2002	2003
	<i>Acres</i>	<i>Acres</i>	<i>Acres</i>	<i>Acres</i>	<i>Acres</i>	<i>Acres</i>
CA	37,800	36,500	24,500	35,000	34,000	23,000
MI	15,500	16,000	16,000	14,300	15,000	15,000
NJ ¹	1,100			1,100		
OR ¹	750			750		
WA	20,000	18,000	17,000	19,000	17,000	16,000
US	75,150	70,500	57,500	70,150	66,000	54,000
	Yield per Acre			Production		
	2001	2002	2003	2001	2002	2003
	<i>Cwt</i>	<i>Cwt</i>	<i>Cwt</i>	<i>1,000 Cwt</i>	<i>1,000 Cwt</i>	<i>1,000 Cwt</i>
CA	30	30	38	1,050	1,020	863
MI	20	15	21	290	219	317
NJ ¹	24			26		
OR ¹	37			28		
WA	36	37	38	684	629	608
US	30	28	33	2,078	1,868	1,788
	Value					
	Per Cwt			Total		
	2001	2002	2003	2001	2002	2003
	<i>Dollars</i>	<i>Dollars</i>	<i>Dollars</i>	<i>1,000 Dollars</i>	<i>1,000 Dollars</i>	<i>1,000 Dollars</i>
CA	156.00	114.00	121.00	163,800	116,280	104,423
MI	43.20	53.40	63.00	12,516	11,703	19,971
NJ ¹	85.00			2,210		
OR ¹	53.20			1,489		
WA	71.50	71.40	71.20	48,910	44,893	43,277
US	110.00	92.50	93.80	228,925	172,876	167,671

¹ Estimate discontinued in 2002.

**Asparagus for Fresh Market and Processing: Production and Value
by Utilization, State, and United States, 2001-2003**

Utilization and State	Production					
	2001		2002		2003	
	<i>1,000 Cwt</i>		<i>1,000 Cwt</i>		<i>1,000 Cwt</i>	
Fresh Market						
CA ¹	1,050		1,020		863	
MI	48		21		43	
NJ ²	26					
OR ²	6					
WA	242		226		233	
US	1,372		1,267		1,139	
	<i>Tons</i>		<i>Tons</i>		<i>Tons</i>	
Processing						
MI	12,100		9,900		13,700	
OR ²	1,090					
WA	22,100		20,150		18,750	
US	35,290		30,050		32,450	
Canning	29,700		26,150		28,650	
Freezing	5,590		3,900		3,800	
	Value					
	Per Unit			Total		
	2001	2002	2003	2001	2002	2003
	<i>Dollars per Cwt</i>	<i>Dollars per Cwt</i>	<i>Dollars per Cwt</i>	<i>1,000 Dollars</i>	<i>1,000 Dollars</i>	<i>1,000 Dollars</i>
Fresh Market						
CA ¹	156.00	114.00	121.00	163,800	116,280	104,423
MI	49.00	67.00	66.00	2,352	1,407	2,838
NJ ²	85.00			2,210		
OR ²	44.60			268		
WA	98.00	97.00	94.00	23,716	21,922	21,902
US	140.00	110.00	113.00	192,346	139,609	129,163
	<i>Dollars per Ton</i>	<i>Dollars per Ton</i>	<i>Dollars per Ton</i>	<i>1,000 Dollars</i>	<i>1,000 Dollars</i>	<i>1,000 Dollars</i>
Processing						
MI	840.00	1,040.00	1,250.00	10,164	10,296	17,133
OR ²	1,120.00			1,221		
WA	1,140.00	1,140.00	1,140.00	25,194	22,971	21,375
US	1,040.00	1,110.00	1,190.00	36,579	33,267	38,508
Canning	1,060.00	1,120.00	1,180.00	31,578	29,211	33,948
Freezing	895.00	1,040.00	1,200.00	5,001	4,056	4,560

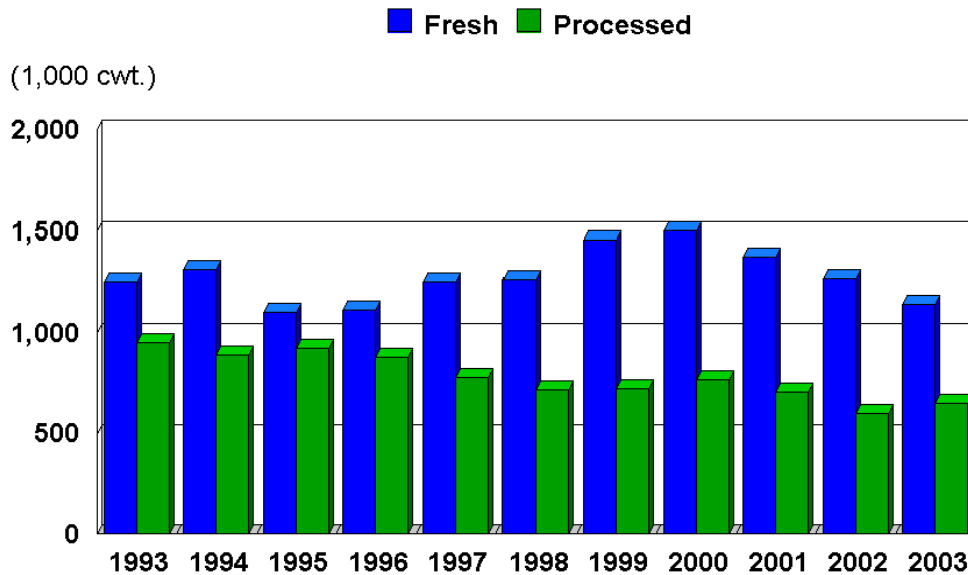
¹ Includes a small amount of processing asparagus.

² Estimate discontinued in 2002.

Asparagus: Production of the 2003 asparagus crop is forecast at 1.79 million cwt, down 4 percent from 2002 and 12 percent below comparable States in 2001. Harvested acreage, at 54,000, is down 18 percent from last year and 21 percent below comparable States two years ago. Fresh production of 1.14 million cwt, decreased 10 percent from last year and 15 percent from comparable States two years earlier. Processed production, at 32,450 tons, is up 8 percent from 2002 but 5 percent below comparable States in 2001. Asparagus for canning, at 28,650 tons, is up 10 percent from last year. Frozen asparagus production of 3,800 tons, is down 3 percent from 2002. Total value of the crop, at 168 million dollars, is down 3 percent from 2002 and 26 percent less than comparable States in 2001. Asparagus harvest in California's Stockton-Delta region is on schedule. Weather conditions have been mild resulting in good quality and higher yields. Low prices have caused some growers to plow under their crop. Michigan's harvest began during the first week of May. Minor frost damage was reported early in the season and cool temperatures during much of May slowed growth. Harvest picked up toward the end of May and into early June. Good yields are expected throughout the State. Washington's asparagus acreage continues to decline. There was little to no frost this past winter, followed by a relatively hot and dry summer. Good yields are reported.

Asparagus: Production

United States, 1993-2003 (1,000 cwt.)



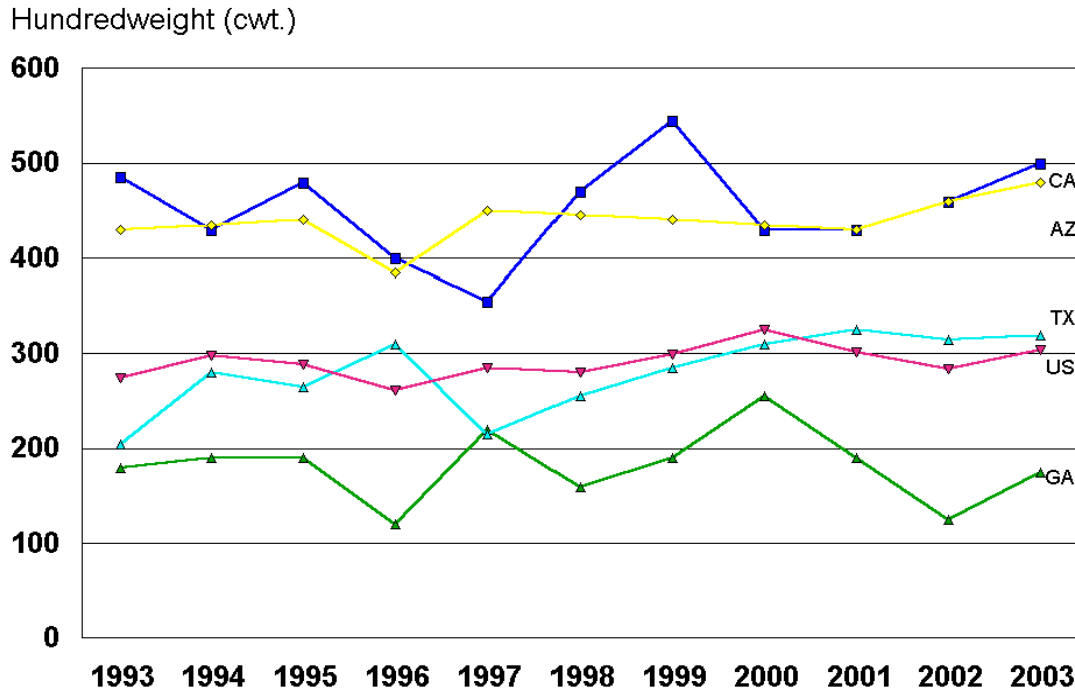
**Onions: Area Planted and Harvested, Yield, Production,
and Value, Selected States, 2002-2003**

Crop and State	Area				Yield per Acre	
	Planted		Harvested		2002	2003
	2002	2003	2002	2003		
	<i>Acres</i>	<i>Acres</i>	<i>Acres</i>	<i>Acres</i>	<i>Cwt</i>	<i>Cwt</i>
Spring						
AZ ¹	1,600	1,500	1,500	1,500	460	500
CA	6,400	6,700	6,200	6,500	460	480
GA	14,700	14,000	11,500	12,500	125	175
TX	16,200	13,000	15,000	11,000	315	320
Total	38,900	35,200	34,200	31,500	284	304
	Production		Value			
	2002	2003	Per Cwt		Total	
			2002	2003	2002	2003
	<i>1,000 Cwt</i>	<i>1,000 Cwt</i>	<i>Dollars</i>	<i>Dollars</i>	<i>1,000 Dollars</i>	<i>1,000 Dollars</i>
Spring						
AZ ¹	690	750	8.35	9.90	5,762	7,425
CA	2,852	3,120	14.20	22.90	40,498	71,448
GA	1,438	2,188	32.20	34.30	46,304	75,048
TX	4,725	3,520	21.40	38.10	101,115	134,112
Total	9,705	9,578	20.00	30.10	193,679	288,033

¹ Includes a small amount of processing.

Spring Onions: Yield

Major States and United States, 1993-2003 (Cwt.)



Spring Onions: The end-of-season spring onion production estimate, at 9.58 million cwt, is down 1 percent from last year. Acres harvested, at 31,500, are down 8 percent from a year ago, while yield, at 304 cwt per acre, is up 20 cwt per acre. The value of the spring crop is estimated at 288 million dollars, 49 percent more than last year. Arizona growers report good quality and yields due to warm weather during the growing season. The California spring onion crop progressed well throughout most of the State but cool spring weather slowed growth in some areas. Crop condition ranged from very good to poor. Harvest went well with no problems reported. There were a few reports of heat damage and root rot lowering yields. In Georgia, the quality of the spring onion crop is rated as fair to good. A few fields had to be abandoned due to disease late in the season that developed from wet conditions. Texas had storms in the lower Rio Grande Valley in early April but damage was not as great as originally anticipated.

The next "*Vegetables*" report will be released at 3 p.m. ET on October 3, 2003.

The United States Department of Agriculture (USDA) prohibits discrimination in all its programs on the basis of race, color, national origin, gender, religion, age, disability, political beliefs, sexual orientation, and marital or family status. (Not all prohibited bases apply to all programs.) Persons with disabilities who require alternative means for communication of program information (braille, large print, audiotape, etc.) should contact the USDA's TARGET Center at 202-720-2600 (voice and TDD).

To file a complaint of discrimination, write USDA, Director, Office of Civil Rights, Room 326-W, Whitten Building, 1400 Independence Avenue, SW, Washington, D.C., 20250-9410, or call 202-720-5964 (voice or TDD). USDA is an equal opportunity provider and employer.

ACCESS TO REPORTS!!

For your convenience, there are several ways to obtain NASS reports, data products, and services:

INTERNET ACCESS

All NASS reports are available free of charge on the worldwide Internet. For access, connect to the Internet and go to the NASS Home Page at: <http://www.usda.gov/nass/>. Select "Today's Reports" or Publications and then Reports Calendar or Publications and then Search, by Title or Subject.

E-MAIL SUBSCRIPTION

All NASS reports are available by subscription free of charge direct to your e-mail address. Starting with the NASS Home Page at <http://www.usda.gov/nass/>, click on **Publications**, then click on the **Subscribe by E-mail** button which takes you to the page describing e-mail delivery of reports. Finally, click on **Go to the Subscription Page** and follow the instructions.

AUTOFAX ACCESS

NASSFax service is available for some reports from your fax machine. Please call 202-720-2000, using the handset attached to your fax. Respond to the voice prompts. Document 0411 is a list of available reports.

----- PRINTED REPORTS OR DATA PRODUCTS

CALL OUR TOLL-FREE ORDER DESK: 800-999-6779 (U.S. and Canada)
Other areas, please call 703-605-6220 FAX: 703-605-6900
(Visa, MasterCard, check, or money order acceptable for payment.)

ASSISTANCE

For **assistance** with general agricultural statistics or further information about NASS or its products or services, contact the **Agricultural Statistics Hotline** at **800-727-9540**, 7:30 a.m. to 4:00 p.m. ET, or e-mail: nass@nass.usda.gov.

USDA Data Users' Forum

October 20, 2003

Holiday Inn Mart Plaza

Chicago, Illinois

The USDA's National Agricultural Statistics Service will hold a public forum for open exchange between Federal agricultural statistics agencies and data users on October 20, 2003. Agency representatives will provide updates on pending changes in the various statistical and information programs and will seek comments from data users. The USDA's Agricultural Marketing Service, Economic Research Service, Foreign Agricultural Service, and World Agricultural Outlook Board, as well as the U.S. Census Bureau's Foreign Trade Division, will also participate in the forum.

For registration details or additional information about the Data Users' Forum, see the NASS homepage at www.usda.gov/nass/ or contact Karlyn McCutcheon of NASS at (202) 690-8141 or at karlyn_mccutcheon@nass.usda.gov.

This Data Users' Forum precedes an Industry Outlook Meeting that will be held at the same location on October 21, 2003. The outlook meeting brings together analysts from various commodity sectors to discuss the outlook situation. For more information about the outlook meeting and to register for it, contact the Livestock Marketing Information Center at (720) 544-2941 or (720) 544-2940.