



National Daily Cow and Boneless Beef Summary

Agricultural Marketing Service
Livestock, Poultry, and Grain Market News

September 29, 2020

Boneless Processing Beef and Beef Trimmings 100% Lean Items

LM_XB 401	National		Central		LM_XB 405		Loads	Wtd Avg	Change
	Loads	Wtd Avg	Loads	Wtd Avg					
Fresh 92-94%					Cutter Cow Carcass Cutout		173.66	-.17	
Fresh 90%	7.6	211.07	4.8	208.17	Inside Rounds - Boxed	2.6	340.30	(2.74)	
Fresh 85%	8.4	177.46	6.3	175.05	Outside Rounds	2.3	315.81	0.22	
Fresh 81%					Eye of Rounds	0.9	326.08	4.45	
Fresh 65%	4.0	84.21	4.0	84.21	Flats and Eyes - Combo:	3.4	320.56	3.77	
Fresh 50%	11.1	49.41			Striploins	6.5	334.49	(0.30)	
					S.P.B. - Combo	1.8	329.17	1.73	

Ground Beef

LM_XB 403	Loads	Wtd Avg	Steer/Heifer/Cow Ground Beef
Fresh 73%	4.1	132.71	
Fresh 81%	4.0	158.12	
Fresh 93%			
Ground Chuck	1.1	165.44	
Ground Round			
Ground Sirloin			

	Loads	Wtd Avg
Fresh 81%	0.0	0.00
Fresh 93%		
Ground Chuck		

Daily Estimated Slaughter Daily Cow and Bull Bids

SJ_LS 710

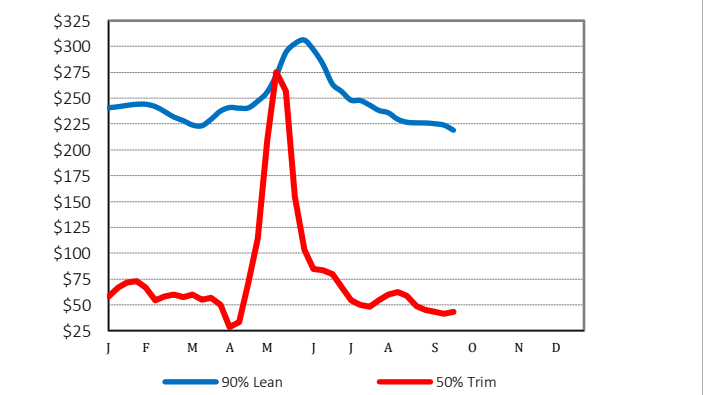
Today (est)	120,000
Week Ago (est)	121,000
Year Ago (act)	118,000
Week to Date (est)	238,000
Same Period Last Week (est)	241,000
Same Period Last Year (act)	234,000
Previous Day Est	
Steer and Heifer	95,000
Cow and Bull	23,000

LM_CT 138

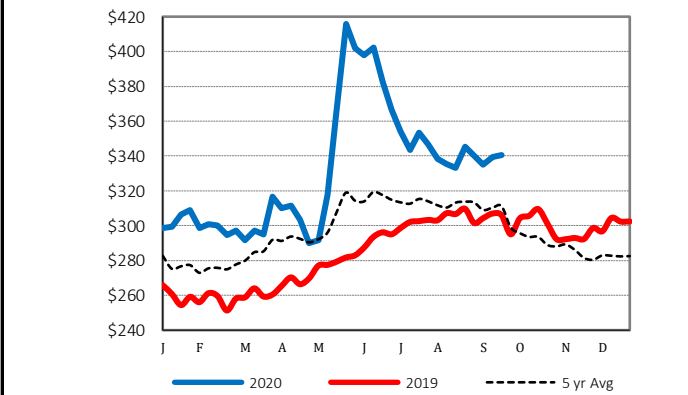
National	Low	High
Breaker	74.00	155.00
Boner	98.00	155.00
Lean	104.00	155.00
Bulls	107.00	165.00

Northwest	Low	High
Breaker	104.00	117.00
Boner	117.00	127.00
Lean	122.00	132.00
Bulls	109.00	165.00

2020 90% Lean vs 50% Lean



100% Lean Inside Rounds



Source: USDA Livestock, Poultry, and Grain Market News
Des Moines, Iowa | 515-284-4460 | dsm.lpgmn@ams.usda.gov

www.ams.usda.gov/LPSMarketNewsPage