



# National Daily Cow and Boneless Beef Summary

Agricultural Marketing Service  
Livestock, Poultry, and Grain Market News

September 23, 2021

## Boneless Processing Beef and Beef Trimmings 100% Lean Items

LM_XB 401	National		Central		LM_XB 405	Loads	Wtd Avg	Change
	Loads	Wtd Avg	Loads	Wtd Avg				
Fresh 92-94%					Cutter Cow Carcass Cutout		232.70	-.71
Fresh 90%	38.5	276.93	31.3	276.55	Inside Rounds - Boxed	0.8	561.58	(8.74)
Fresh 85%	21.4	256.02	15.0	255.50	Outside Rounds	0.0	0.00	0.00
Fresh 81%					Eye of Rounds	0.8	436.15	(2.35)
Fresh 65%					Flats and Eyes - Combo:	5.7	428.91	(0.36)
Fresh 50%	10.1	135.35			Striploins	6.9	468.29	(0.33)
					S.P.B. - Combo	3.1	431.60	(1.60)

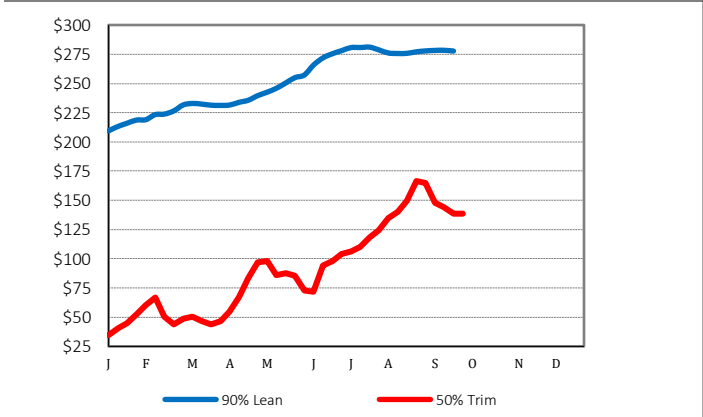
## Ground Beef

LM_XB 403	Loads	Wtd Avg	Steer/Heifer/Cow Ground Beef	
Fresh 73%	2.9	212.83		
Fresh 81%	4.5	236.16		
Fresh 93%	0.2	366.06		
Ground Chuck	7.6	236.87	Fresh 81%	0.0
Ground Round	0.3	332.91	Fresh 93%	0.00
Ground Sirloin			Ground Chuck	

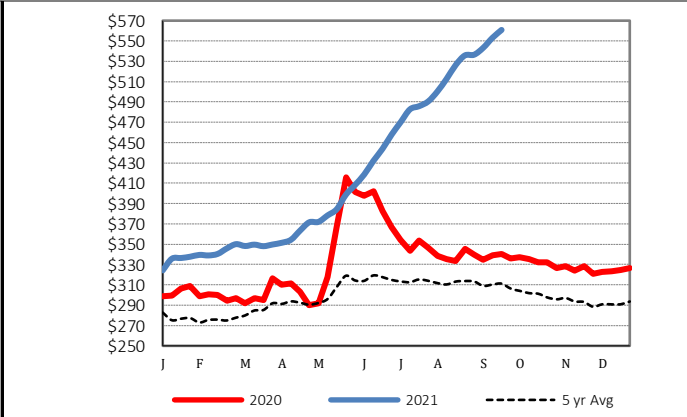
## Daily Estimated Slaughter Daily Cow and Bull Bids

SJ_LS 710			LM_CT 138		
			National	Low	High
Today (est)		114,000	Breaker	124.00	157.00
Week Ago (est)		120,000	Boner	120.00	156.00
Year Ago (act)		122,000	Lean	115.00	156.00
			Bulls	116.00	172.00
Week to Date (est)		477,000	-----		
Same Period Last Week (est)		475,000	Northwest	Low	High
Same Period Last Year (act)		483,000	Breaker	126.00	136.00
Previous Day Est	Steer and Heifer	94,000	Boner	136.00	146.00
	Cow and Bull	28,000	Lean	137.00	151.00
			Bulls	116.00	172.00

## 2020 90% Lean vs 50% Lean



## 100% Lean Inside Rounds



Source: USDA Livestock, Poultry, and Grain Market News

Des Moines, Iowa | 515-284-4460 | [dsm.lpgmn@ams.usda.gov](mailto:dsm.lpgmn@ams.usda.gov)

[www.ams.usda.gov/LPSMarketNewsPage](http://www.ams.usda.gov/LPSMarketNewsPage)