



# National Daily Cow and Boneless Beef Summary

Agricultural Marketing Service  
Livestock, Poultry, and Grain Market News

September 20, 2021

## Boneless Processing Beef and Beef Trimmings 100% Lean Items

	National		Central			Loads	Wtd Avg	Change
	LM_XB 401			LM_XB 405				
	Loads	Wtd Avg	Loads	Wtd Avg				
Fresh 92-94%	4.1	288.61	3.1	288.98	Cutter Cow Carcass Cutout	234.61	-0.62	
Fresh 90%	12.2	278.49	4.4	276.15	Inside Rounds - Boxed	578.61	9.71	
Fresh 85%	14.6	258.03	11.1	258.51	Outside Rounds	0.00	0.00	
Fresh 81%					Eye of Rounds	446.49	11.17	
Fresh 65%					Flats and Eyes - Combo:	428.65	3.94	
Fresh 50%	9.4	137.63			Striploins	466.41	3.28	
					S.P.B. - Combo	428.08	2.18	

## Ground Beef

LM_XB 403	Loads	Wtd Avg	Steer/Heifer/Cow Ground Beef	
Fresh 73%	1.0	212.83		
Fresh 81%	7.5	240.19	Loads	Wtd Avg
Fresh 93%	0.3	360.97	Fresh 81%	0.0
Ground Chuck	2.4	264.29	Fresh 93%	0.00
Ground Round	1.2	330.14	Ground Chuck	
Ground Sirloin				

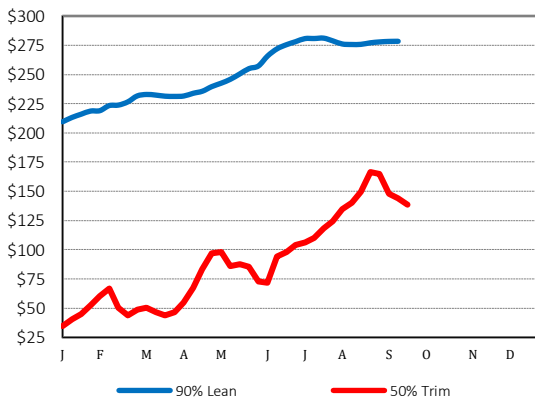
## Daily Estimated Slaughter

SJ_LS 710	
Today (est)	119,000
Week Ago (est)	114,000
Year Ago (act)	118,000
Week to Date (est)	0
Same Period Last Week (est)	0
Same Period Last Year (act)	0
Previous Day Est	Steer and Heifer 93,000 Cow and Bull 25,000

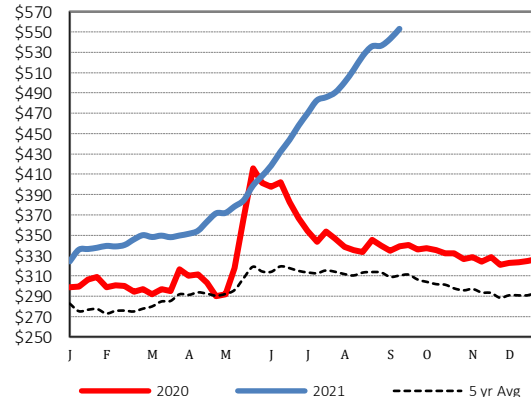
## Daily Cow and Bull Bids

LM_CT 138	Low	High
<b>National</b>		
Breaker	110.00	155.00
Boner	122.00	155.00
Lean	116.00	155.00
Bulls	116.00	172.00
<b>Northwest</b>		
Breaker	126.00	136.00
Boner	136.00	146.00
Lean	116.00	151.00
Bulls	116.00	172.00

## 2020 90% Lean vs 50% Lean



## 100% Lean Inside Rounds



Source: USDA Livestock, Poultry, and Grain Market News

Des Moines, Iowa | 515-284-4460 | [dsm.lpgmn@ams.usda.gov](mailto:dsm.lpgmn@ams.usda.gov)

[www.ams.usda.gov/LPSMarketNewsPage](http://www.ams.usda.gov/LPSMarketNewsPage)