



# National Daily Cow and Boneless Beef Summary

Agricultural Marketing Service  
Livestock, Poultry, and Grain Market News

September 30, 2021

## Boneless Processing Beef and Beef Trimmings 100% Lean Items

LM_XB 401	National		Central		LM_XB 405	Loads	Wtd Avg	Change
	Loads	Wtd Avg	Loads	Wtd Avg				
Fresh 92-94%					Cutter Cow Carcass Cutout		232.64	.13
Fresh 90%	21.2	276.27	19.7	275.96	Inside Rounds - Boxed	1.4	540.82	1.47
Fresh 85%	15.6	259.73	10.5	258.50	Outside Rounds	0.0	0.00	0.00
Fresh 81%					Eye of Rounds	0.6	416.54	0.18
Fresh 65%	2.5	187.14			Flats and Eyes - Combos	4.4	432.26	2.68
Fresh 50%	12.2	108.38			Striploins	7.3	462.25	(0.49)
					S.P.B. - Combo	1.9	431.54	3.72

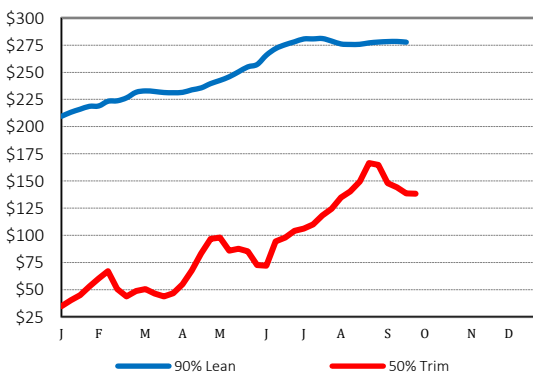
## Ground Beef

LM_XB 403	Loads	Wtd Avg	Steer/Heifer/Cow Ground Beef	
Fresh 73%	3.0	209.75		
Fresh 81%	5.4	232.53		
Fresh 93%	0.4	357.43		
Ground Chuck	0.6	254.50	Loads	Wtd Avg
Ground Round	0.4	331.23	Fresh 81%	0.0
			Fresh 93%	0.0
			Ground Chuck	
Ground Sirloin				

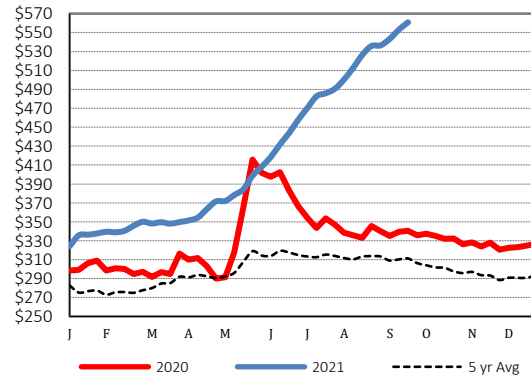
## Daily Estimated Slaughter Daily Cow and Bull Bids

SJ_LS 710			LM_CT 138		
Today (est)		121,000	National	Low	High
Week Ago (est)		114,000	Breaker	123.00	157.00
Year Ago (act)		120,000	Boner	120.00	156.00
			Lean	123.00	156.00
			Bulls	116.00	172.00
Week to Date (est)		473,000			
Same Period Last Week (est)		477,000	Northwest	Low	High
Same Period Last Year (act)		476,000	Breaker	126.00	136.00
			Boner	136.00	146.00
Previous Day Est	Steer and Heifer	88,000	Lean	137.00	151.00
	Cow and Bull	28,000	Bulls	116.00	172.00

## 2020 90% Lean vs 50% Lean



## 100% Lean Inside Rounds



Source: USDA Livestock, Poultry, and Grain Market News  
Des Moines, Iowa | 515-284-4460 | dsm.lpgmn@ams.usda.gov  
[www.ams.usda.gov/LPSMarketNewsPage](http://www.ams.usda.gov/LPSMarketNewsPage)