



# National Daily Cow and Boneless Beef Summary

Agricultural Marketing Service  
Livestock, Poultry, and Grain Market News

September 17, 2021

## Boneless Processing Beef and Beef Trimmings 100% Lean Items

LM_XB 401	National		Central		LM_XB 405	Loads	Wtd Avg	Change
	Loads	Wtd Avg	Loads	Wtd Avg				
Fresh 92-94%					Cutter Cow Carcass Cutout		235.23	.13
Fresh 90%					Inside Rounds - Boxed	0.3	568.90	32.74
Fresh 85%	5.5	255.43			Outside Rounds	1.0	433.55	0.00
Fresh 81%					Eye of Rounds	0.5	435.32	3.57
Fresh 65%	4.1	188.50	4.1	188.50	Flats and Eyes - Combo:	2.4	424.71	0.93
Fresh 50%	8.3	140.22			Striploins	6.6	463.13	0.73
					S.P.B. - Combo	1.7	425.90	1.88

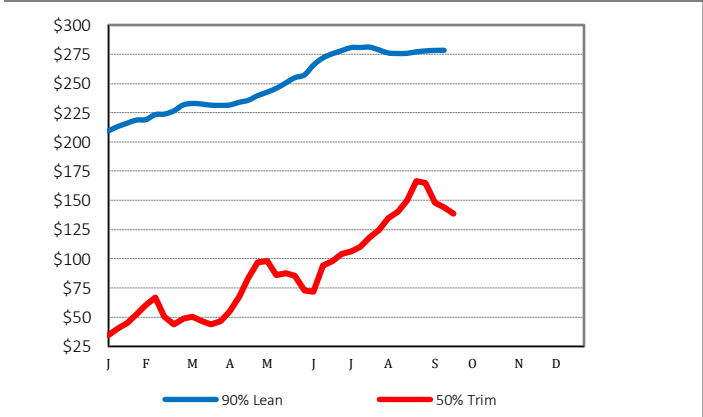
## Ground Beef

LM_XB 403	Loads	Wtd Avg	Steer/Heifer/Cow Ground Beef	Loads	Wtd Avg
Fresh 73%	4.1	211.74	Fresh 81%	0.0	0.00
Fresh 81%	2.5	261.32	Fresh 93%		
Fresh 93%	2.0	350.25	Ground Chuck		
Ground Chuck	4.3	269.32			
Ground Round	0.6	289.96			
Ground Sirloin	0.3	363.83			

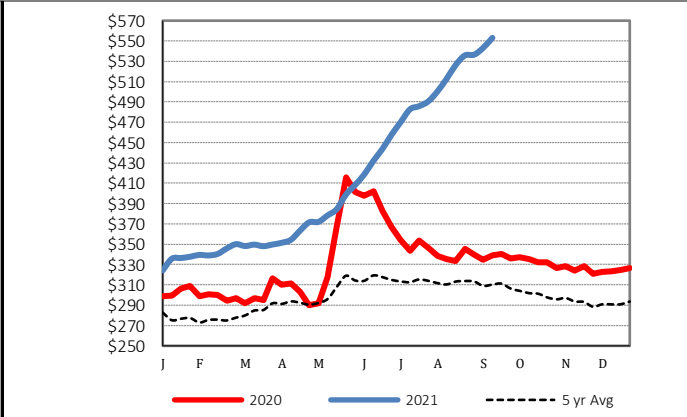
## Daily Estimated Slaughter Daily Cow and Bull Bids

SJ_LS 710	Daily Estimated Slaughter		LM_CT 138	Daily Cow and Bull Bids	
	Today (est)	Year Ago (act)		National	Low
Today (est)	118,000		Breaker	110.00	155.00
Week Ago (est)	121,000		Boner	122.00	155.00
Year Ago (act)	112,000		Lean	116.00	155.00
			Bulls	116.00	172.00
Week to Date (est)	593,000				
Same Period Last Week (est)	486,000				
Same Period Last Year (act)	592,000				
Previous Day Est			Northwest	Low	High
	Steer and Heifer	93,000	Breaker	126.00	136.00
	Cow and Bull	27,000	Boner	136.00	146.00
			Lean	116.00	151.00
			Bulls	116.00	172.00

## 2020 90% Lean vs 50% Lean



## 100% Lean Inside Rounds



Source: USDA Livestock, Poultry, and Grain Market News

Des Moines, Iowa | 515-284-4460 | [dsm.lpgmn@ams.usda.gov](mailto:dsm.lpgmn@ams.usda.gov)

[www.ams.usda.gov/LPSMarketNewsPage](http://www.ams.usda.gov/LPSMarketNewsPage)