



# National Daily Cow and Boneless Beef Summary

Agricultural Marketing Service  
Livestock, Poultry, and Grain Market News

August 4, 2021

## Boneless Processing Beef and Beef Trimmings 100% Lean Items

LM_XB 401	National		Central		LM_XB 405	Loads	Wtd Avg	Change
	Loads	Wtd Avg	Loads	Wtd Avg				
Fresh 92-94%					Cutter Cow Carcass Cutout		229.05	.65
Fresh 90%	18.5	276.13	13.9	275.56	Inside Rounds - Boxed	0.4	529.84	(2.29)
Fresh 85%	9.0	255.92	7.9	255.42	Outside Rounds	0.9	412.29	0.51
Fresh 81%					Eye of Rounds	0.7	419.23	0.91
Fresh 65%	5.5	170.18	5.5	170.18	Flats and Eyes - Combo:	2.4	414.24	(0.07)
Fresh 50%	19.4	150.80			Striploins	5.5	416.34	(2.05)
					S.P.B. - Combo	3.0	406.38	(0.58)

## Ground Beef

LM_XB 403	Loads	Wtd Avg	Steer/Heifer/Cow Ground Beef	
Fresh 73%	4.4	169.29		
Fresh 81%	4.2	213.27		
Fresh 93%	1.1	352.89		
Ground Chuck	2.7	266.62		
Ground Round	1.1	305.79		
Ground Sirloin	0.4	347.49		
			Loads	Wtd Avg
			Fresh 81%	0.0
			Fresh 93%	0.00
			Ground Chuck	

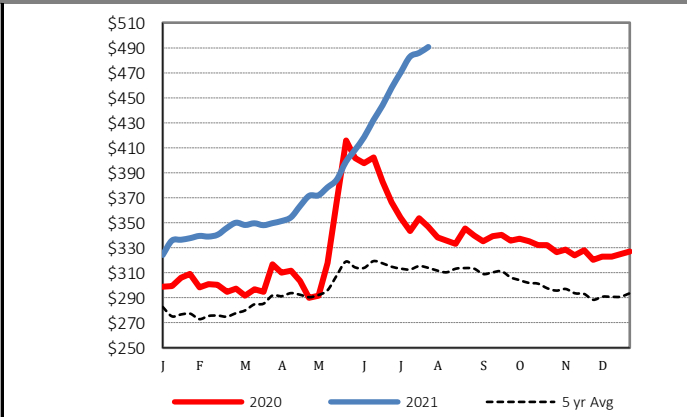
## Daily Estimated Slaughter Daily Cow and Bull Bids

SJ_LS 710	Daily Estimated Slaughter		LM_CT 138	Daily Cow and Bull Bids	
	Today (est)	Week Ago (est)		National	Low
Year Ago (act)		118,000	Breaker	112.00	156.00
Week to Date (est)		359,000	Boner	115.00	163.00
Same Period Last Week (est)		358,000	Lean	117.00	167.00
Same Period Last Year (act)		346,000	Bulls	120.00	184.00
Previous Day Est	Steer and Heifer	96,000	Northwest		
	Cow and Bull	26,000	Breaker	132.00	148.00
			Boner	125.00	153.00
			Lean	135.00	163.00
			Bulls	120.00	184.00

## 2020 90% Lean vs 50% Lean



## 100% Lean Inside Rounds



Source: USDA Livestock, Poultry, and Grain Market News

Des Moines, Iowa | 515-284-4460 | [dsm.lpgmn@ams.usda.gov](mailto:dsm.lpgmn@ams.usda.gov)

[www.ams.usda.gov/LPSMarketNewsPage](http://www.ams.usda.gov/LPSMarketNewsPage)