



National Daily Cow and Boneless Beef Summary

Agricultural Marketing Service
Livestock, Poultry, and Grain Market News

October 26, 2021

Boneless Processing Beef and Beef Trimmings 100% Lean Items

LM_XB 401	National		Central		LM_XB 405	Loads	Wtd Avg	Change
	Loads	Wtd Avg	Loads	Wtd Avg				
Fresh 92-94%	3.6	284.55	2.7	287.37	Cutter Cow Carcass Cutout		230.46	.22
Fresh 90%	4.6	276.20			Inside Rounds - Boxed	3.2	451.96	(3.40)
Fresh 85%	14.0	257.27	11.4	258.24	Outside Rounds	0.0	0.00	0.00
Fresh 81%					Eye of Rounds	0.9	433.52	8.23
Fresh 65%					Flats and Eyes - Combo:	3.8	431.53	1.24
Fresh 50%	25.1	86.24			Striploins	6.9	480.70	1.93
					S.P.B. - Combo	2.1	432.87	7.75

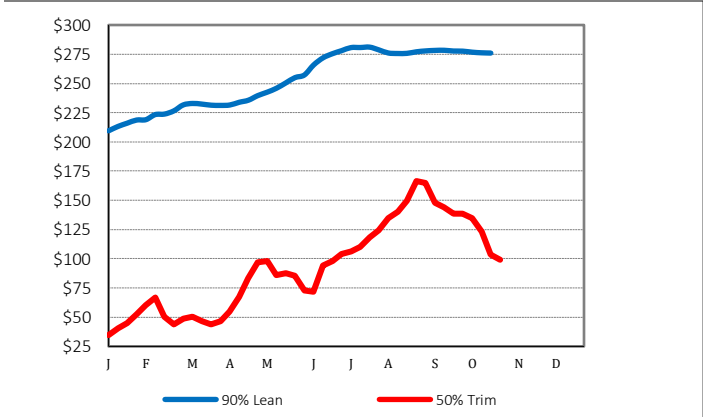
Ground Beef

LM_XB 403	Loads	Wtd Avg	Steer/Heifer/Cow Ground Beef	Loads	Wtd Avg
Fresh 73%	2.2	196.04	Fresh 81%	0.0	0.00
Fresh 81%	8.5	237.13	Fresh 93%		
Fresh 93%			Ground Chuck		
Ground Chuck	0.6	258.40			
Ground Round	0.3	327.14			
Ground Sirloin					

Daily Estimated Slaughter Daily Cow and Bull Bids

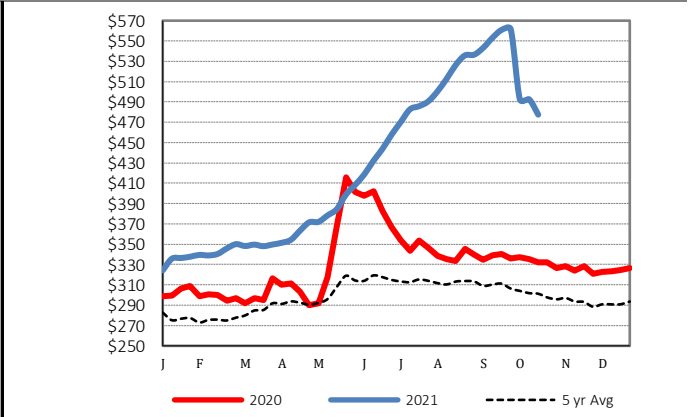
SJ_LS 710	Daily Estimated Slaughter		LM_CT 138	Daily Cow and Bull Bids	
	Loads	Wtd Avg		Low	High
Today (est)		122,000	National		
Week Ago (est)		121,000	Breaker	118.00	158.00
Year Ago (act)		119,000	Boner	123.00	155.00
Week to Date (est)		244,000	Lean	121.00	155.00
Same Period Last Week (est)		241,000	Bulls	125.00	168.00
Same Period Last Year (act)		235,000	Northwest		
Previous Day Est	Steer and Heifer	97,000	Breaker	118.00	136.00
	Cow and Bull	25,000	Boner	123.00	146.00
			Lean	133.00	147.00
			Bulls	147.00	158.00

2020 90% Lean vs 50% Lean



Source: USDA Livestock, Poultry, and Grain Market News

100% Lean Inside Rounds



Source: USDA Livestock, Poultry, and Grain Market News

Des Moines, Iowa | 515-284-4460 | dsm.lpgmn@ams.usda.gov

www.ams.usda.gov/LPSMarketNewsPage