



National Daily Cow and Boneless Beef Summary

Agricultural Marketing Service
Livestock, Poultry, and Grain Market News

October 22, 2021

Boneless Processing Beef and Beef Trimmings 100% Lean Items

LM_XB 401	National		Central		LM_XB 405	Loads	Wtd Avg	Change
	Loads	Wtd Avg	Loads	Wtd Avg				
Fresh 92-94%					Cutter Cow Carcass Cutout		230.90	.02
Fresh 90%					Inside Rounds - Boxed	3.8	458.99	1.88
Fresh 85%	8.3	255.17			Outside Rounds	0.0	0.00	0.00
Fresh 81%	8.6	226.32	7.3	225.00	Eye of Rounds	0.5	436.15	0.21
Fresh 65%	3.1	176.00	3.1	176.00	Flats and Eyes - Combo:	3.7	429.70	(0.36)
Fresh 50%	8.1	102.35			Striploins	6.4	476.30	3.46
					S.P.B. - Combo	2.4	433.78	(0.43)

Ground Beef

LM_XB 403	Loads	Wtd Avg	Steer/Heifer/Cow Ground Beef	
Fresh 73%	3.9	182.56		
Fresh 81%	2.0	235.88		
Fresh 93%	0.2	373.01		
Ground Chuck	1.0	253.34		
Ground Round				
Ground Sirloin				

	Loads	Wtd Avg
Fresh 81%	0.0	0.00
Fresh 93%		
Ground Chuck		

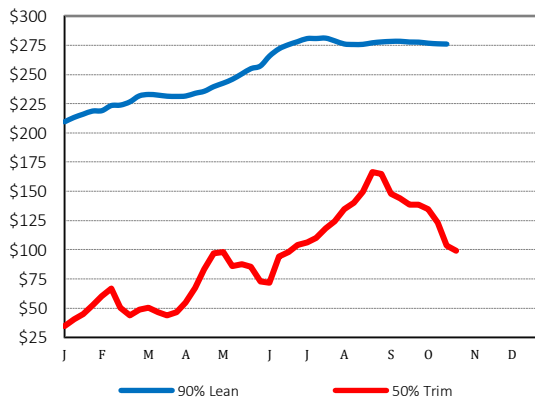
Daily Estimated Slaughter

SJ_LS 710		
Today (est)		112,000
Week Ago (est)		107,000
Year Ago (act)		104,000
Week to Date (est)		594,000
Same Period Last Week (est)		587,000
Same Period Last Year (act)		583,000
Previous Day Est	Steer and Heifer	93,000
	Cow and Bull	27,000

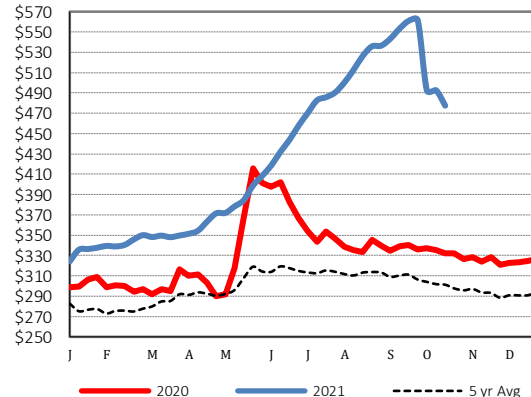
Daily Cow and Bull Bids

LM_CT 138	Low	High
National		
Breaker	118.00	158.00
Boner	123.00	155.00
Lean	120.00	155.00
Bulls	130.00	166.00
Northwest		
Breaker	118.00	136.00
Boner	123.00	146.00
Lean	133.00	147.00
Bulls	147.00	158.00

2020 90% Lean vs 50% Lean



100% Lean Inside Rounds



Source: USDA Livestock, Poultry, and Grain Market News

Des Moines, Iowa | 515-284-4460 | dsm.lpgmn@ams.usda.gov

www.ams.usda.gov/LPSMarketNewsPage