



National Daily Cow and Boneless Beef Summary

Agricultural Marketing Service
Livestock, Poultry, and Grain Market News

September 13, 2021

Boneless Processing Beef and Beef Trimmings 100% Lean Items

LM_XB 401	National		Central		LM_XB 405	Loads	Wtd Avg	Change
	Loads	Wtd Avg	Loads	Wtd Avg				
Fresh 92-94%	2.7	288.91	2.7	288.91	Cutter Cow Carcass Cutout		234.65	-.89
Fresh 90%	10.3	278.76	6.1	278.81	Inside Rounds - Boxed	0.8	568.05	0.14
Fresh 85%	11.6	260.29	9.6	260.21	Outside Rounds	1.3	424.82	0.00
Fresh 81%	6.3	234.00	6.3	234.00	Eye of Rounds	0.8	429.31	(1.40)
Fresh 65%					Flats and Eyes - Combo:	5.5	424.70	(0.90)
Fresh 50%	12.4	139.65			Striploins	6.1	463.68	(0.73)
					S.P.B. - Combo	2.5	424.70	(1.05)

Ground Beef

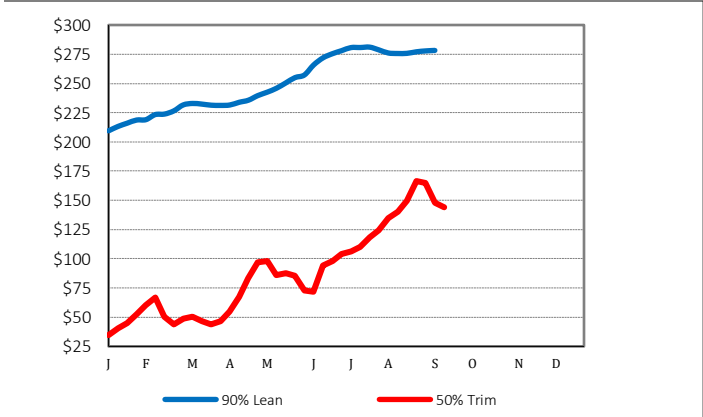
LM_XB 403	Loads	Wtd Avg	Steer/Heifer/Cow Ground Beef	Loads	Wtd Avg
Fresh 73%	1.6	223.46	Fresh 81%	0.0	0.00
Fresh 81%	4.5	249.66	Fresh 93%		
Fresh 93%	0.8	378.34	Ground Chuck		
Ground Chuck	6.6	274.86	Ground Round		
Ground Round			Ground Sirloin		
Ground Sirloin	0.3	375.17			

Daily Estimated Slaughter Daily Cow and Bull Bids

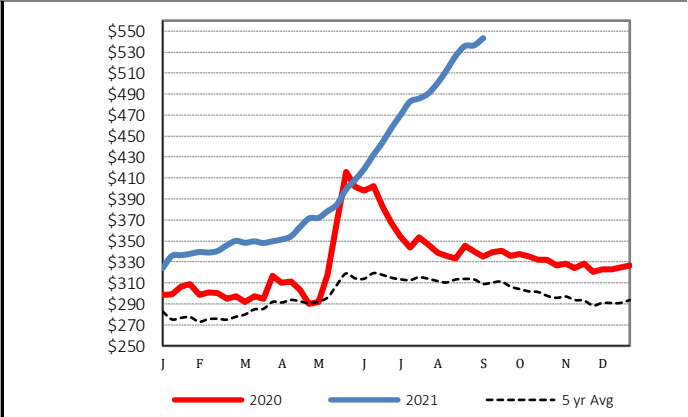
SJ_LS 710	Low	High
Today (est)	114,000	
Week Ago (est)	3,000	
Year Ago (act)	118,000	
Week to Date (est)	0	
Same Period Last Week (est)	0	
Same Period Last Year (act)	0	
Previous Day Est	Steer and Heifer	95,000
	Cow and Bull	26,000

LM_CT 138	Low	High
National		
Breaker	110.00	155.00
Boner	117.00	155.00
Lean	117.00	155.00
Bulls	116.00	173.00
Northwest		
Breaker	126.00	136.00
Boner	136.00	146.00
Lean	137.00	151.00
Bulls	116.00	172.00

2020 90% Lean vs 50% Lean



100% Lean Inside Rounds



Source: USDA Livestock, Poultry, and Grain Market News

Des Moines, Iowa | 515-284-4460 | dsm.lpgmn@ams.usda.gov

www.ams.usda.gov/LPSMarketNewsPage