



National Daily Cow and Boneless Beef Summary

Agricultural Marketing Service

Livestock, Poultry, and Grain Market News

July 22, 2025

Boneless Processing Beef and Beef Trimmings

[LM_XB 401](#)

National

Central

	Loads	Wtd Avg	Loads	Wtd Avg
Fresh 92-94%	0.00	0.00	0.0	0.00
Fresh 90%	3.3	419.30	0.0	0.00
Fresh 85%	4.4	392.61	3.5	393.96
Fresh 81%	0.0	0.00	0.0	0.00
Fresh 65%	0.0	0.00	0.0	0.00
Fresh 50%	23.6	215.87		

100% Lean Items

[LM_XB 405](#)

	Loads	Wtd Avg	Change
Cutter Cow Carcass Cutout		325.80	1.53
Inside Rounds - Boxed	2.5	526.26	13.56
Outside Rounds	0.0	0.00	0.00
Eye of Rounds	1.3	475.35	(7.38)
Flats and Eyes - Combc	3.4	469.80	(4.05)
Striploins	4.4	560.64	11.03
S.P.B. - Combo	2.9	484.26	(2.46)

Ground Beef

[LM_XB 403](#)

Loads

Wtd Avg

Steer/Heifer/Cow Ground Beef

Fresh 73%	3.8	325.40
Fresh 81%	3.6	360.84
Fresh 93%	0.2	471.41
Ground Chuck	0.5	381.10
Ground Round		
Ground Sirloin		

Loads

Wtd Avg

Fresh 81%	0.0	0.00
Fresh 93%		
Ground Chuck		

Daily Estimated Slaughter

[SJ_LS 710](#)

Today (est)	112,000
Week Ago (est)	118,000
Year Ago (act)	125,096
Week to Date (est)	217,000
Same Period Last Week (est)	230,000
Same Period Last Year (act)	238,983
Previous Day Est	Steer and Heifer 87,000
	Cow and Bull 18,000

Daily Cow and Bull Bids

[LM_CT 138](#)

National

Low

High

Breaker	255.00	305.00
Boner	255.00	302.00
Lean	280.00	346.00
Bulls	234.00	324.00

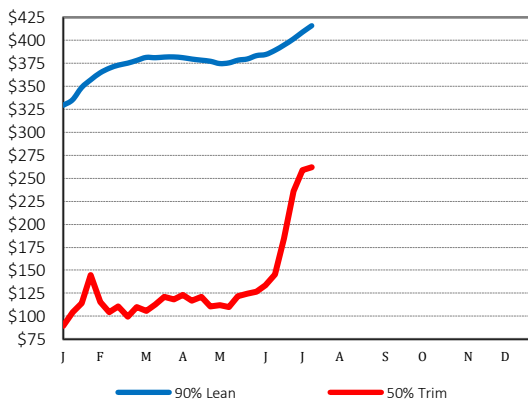
Northwest

Low

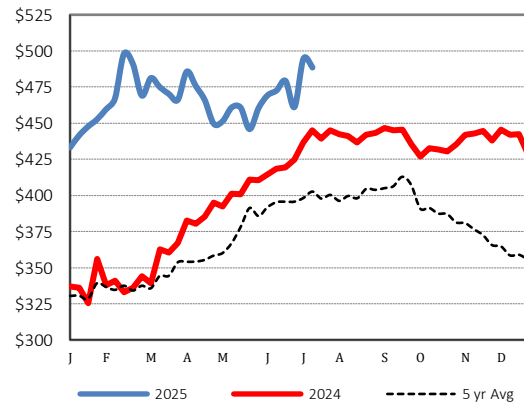
High

Breaker	255.00	305.00
Boner	290.00	346.00
Lean	255.00	300.00
Bulls	234.00	315.00

2025 90% Lean vs 50% Lean



100% Lean Inside Rounds



Source: USDA Livestock, Poultry, and Grain Market News

Des Moines, Iowa | 515-284-4460 | dsm.lpgmn@ams.usda.gov

www.ams.usda.gov/LPSMarketNewsPage